

Filed 11-18-2021

N55; 100 300

T24SR TNSEC 19

DATE: APRIL 16, 2019

R	S24	S19	R
8			7
W	S25	S30	W

CREW:

CREW CHIEF - S. J. FLAISE

TECH - J. A. LORSUNG

MONUMENT:

FROM THE 1958 DCSD RENEWAL
A 2' 1/2" DIA. BRASS CAP ON A 1" I.D. IRON PIPE.
CAP PROPERLY MARKED AS DESCRIBED

PROV:

16" ABOVE GROUND

FOUND:

EVIDENCE OF TWO 1893 GLO SURVEY B.T.'S
A 37" DIA. MAPLE WITH A PREVIOUSLY OPENED
BLAZE, NOW ROTTED OUT WITH NO MARKS; BEARS
N14 3/4° E, 45 1/2 FT. DIST (PER 2005/2006 BLM REC.)
A 27" DIA MAPLE WITH NO BLAZE SCARS
(TRUNK IS SPROUT FROM ROOT CROWN OF
1893 NW BEARING TREE). THE ROOT CROWN
BEARS S88° W, 37 1/2 FT. DIST. (AS PER 1893 REC.)

THE FOUR 1958 DCSD REFERENCES.

A 37" DIA. MAPLE WITH A PREVIOUSLY OPENED NOW
ROTTED OUT BLAZE; BEARS N14 3/4° E, 45 1/2 FT.
DIST (PER 2005 BLM RECORD).

(NOTED AS NEW BT AND 1893 BT)



OVER

FOUND (CONT'D):

A 4" (CROSS PIECE LENGTH) "+" CARVED
IN VERTICAL SANDSTONE BLUFF; BEARS
S48°E, 7² FT. DISTANT (AS PER 2005 BLM REC.)

A 16" DIA. I. CEDAR WITH A FULLY HEALED
MOUBLE BLAZE; BEARS S91°4'W, 38⁵ FT. DISTANT
(AS PER 2005 BLM)

A 28" DIA. W. FIR TIPPED OUT AND FALLEN
ON FACE. ROOT HOLE OF THIS TREE BEARS N83
3/4°W, 61³ FT. DIST (AS PER 2005 BLM REC.)

NEW REFERENCES:

A 4" MAG NAIL DRIVEN IN TOP CENTER
OF A SOLID 24" DIA, 1¹/₂ FT. TALL D. FIR
STUMP; BEARS N48°W, 85⁶ DISTANT.

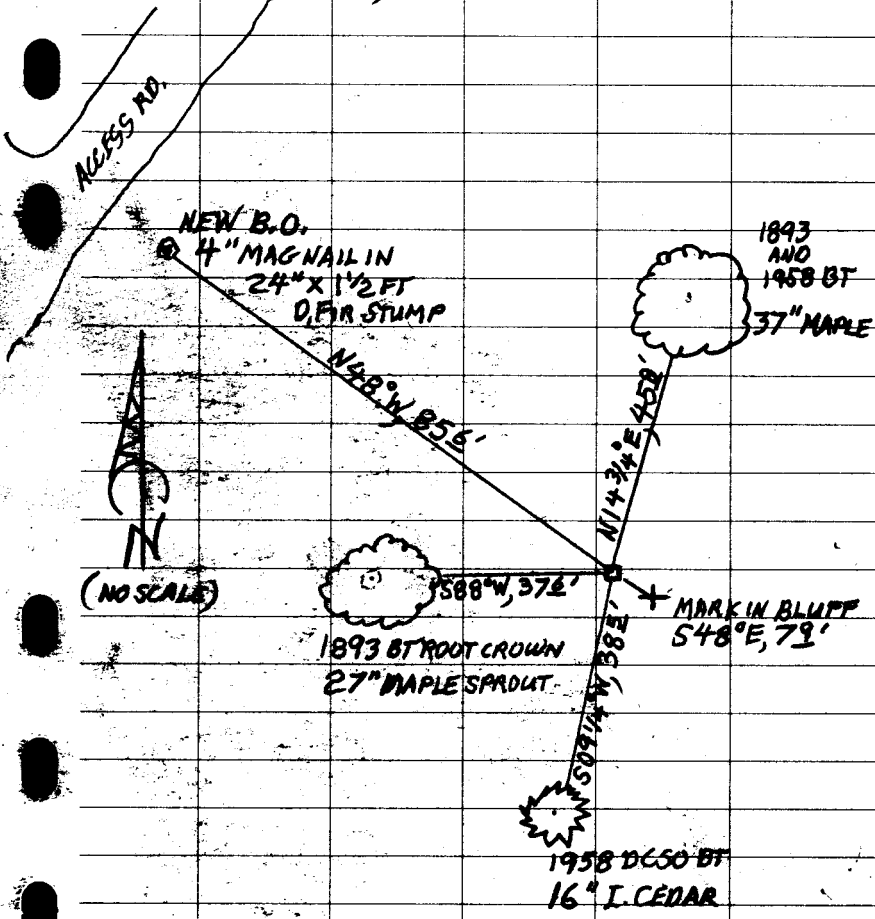
A ROUGH STONE COLLAR IS BUILT
AROUND FOUND B.C. / I.P. MONUMENT
NOW PROJECTS 6" ABOVE STONE COLLAR

B.C. MONUMENT IS AT FOOT OF
SOUTHERLY WALL OF HOLE LIKE DRAW
AND IS APPROX, 100 FT, SOUTHEAST FROM
MAIN FOREST ACCESS ROAD.

T245 RTW PLS 100300 (CONT'D)

SKETCH:

SHOWS LIVE BT'S, "+" IN BLUFF AND NEW REF.



CS 67/50-25

TOWNSHIP 24 RANGE 08 POINT IDENTIFIER # 700300

PRIMARY CORNER DESCRIPTION Sec. Cor. for 24 & 25; 19 & 30, T24-7

Alias _____	Description _____
Alias _____	Description _____
Alias _____	Description _____
Alias _____	Description _____

GLO survey by Dennis Hathorn, Deputy Surveyor under Contract #73, dated June 8, 1857 - (DCSO records Vol. 8 Page(s) 3195)

Set post cor. secs. 19, 30, 24 and 25, from which
A Fir 9" dia., bears N.28°W., 36 lks. dist.
A Fir 6" dia., bears S.75°W., 20 lks. dist.
A Fir 36" dia., bears N.4°E., 13 lks. dist.
A Cedar 12" dia., bears S.70°E., 25 lks. dist. 16 50

Fd. Hathorn's BTs and used in GLO survey by William R. Whipple, Deputy Surveyor, under Contract #622, dated June 23, 1893 (DCSO records Vol. 8 Page(s) 3272 and 3278)

(On page 3272)
Trees were described as above)
(On page 3278)
"I can only account for the difference in description of bearing trees in this way. I only ran to this cor. to verify my work and did not take description of BTs. I got Mr. D.W. Applegate to copy the notes for Surveyor Generals office and in the absence of other notes, I think he must have taken description from notes furnished by Surveyor General and the error was overlooked by myself."

GLO Survey by Henry L. Chandler, U.S. Deputy Surveyor, under Contract #619, dated June 5, 1893 - (DCSO records Vol. 8 Page(s) 3219-20)

At sec. cor., which is a post, so badly decayed that the marks are almost entirely obliterated, from which
A Cedar 12" dia., bears S.70°E., 25 lks. dist.
The other bearing trees described in notes furnished me are all destroyed.
I set a new post, 4 ft. long, 4" sq., 24" in the ground for cor., marked T24S S19 on NE.; R8W S30 on SE.; R7W S25 on SW.; and S24 on NW. faces, with 2 notches on S. and 4 notches on N. edges, from which
The above Cedar bears S.70°E., 25 lks. dist. mkd. T24S R8W S30 BT.
and mark new trees as follows: 49 50
A Maple 10" dia., bears N.17°E., 75 lks. dist. mkd. T24S R7W S19 BT.
A Maple 8" dia., bears S.88°W., 37 62 lks. dist. mkd. T24S R8W S25 BT.
A Fir 60" dia. N.51°W., 52 14 lks. dist. mkd. T24S R8W S24 BT

(Cont. Next Page)

CS 67/50-25

TOWNSHIP 24 RANGE 08 POINT IDENTIFIER # 700300

PRIMARY CORNER DESCRIPTION Sec. Cor. for 24 & 25; 19 & 30, T24-7

Alias _____ Description _____
Alias _____ Description _____
Alias _____ Description _____
Alias _____ Description _____

Douglas Co. Surveyors Office - James Byron, Deputy - Milo Godfrey; S. Bilow, crew - June 30, 1958 - C.S. File 49/41

Found three BTs as recorded by Chandler in 1893:

10" Maple now 24", N.17°E., 49.5 ft. We make dist. 44.0 ft. Open face, good scribing "4 /".

8" now 12" Maple stub, I open and find good scribing "BT", S.88°W., 37.6 ft.

60" Fir stump, I open near base and find good scribing "BT", N.51°W., 52.1 ft. We make dist. 46.6 ft.

Stump hole that would check bearing. We make dist. 13.5 ft., rec. 16.5 ft. for orig. 12" Cedar S.70°E., 16.5 ft

Set Brass cap at cor. mkd: County Surveyors Office

	T 24 S	
R8W	S 24 S 19	R7W
	S 25 S 30	
	1958	

New BTs and bearing object:

10" Cedar bears S.10½°W., 38.6 ft. scribed S25 T24S R8W CS BT.

I chisel 4" + and B.O. 5 ft. above ground on 10 ft. high sandstone bluff which faces West, S.45°E., 7.8 ft.

24" Maple bears N.17°E., 44.0 ft. scribed S19 T24S R7W CS BT.

14" W.Fir bears N.82°W., 64.3 ft. scribed S24 T24S R8W CS BT.

Fd. OK, DCSO Sept. 21, 1971 - C.S. File 54/55

Fd. OK Nov. 20, 1981 by Les Roberts - M 90-12

Found OK by R. Rice, June 2003 - M142-47

BLM Dependent resurvey by A. Bert Skeesick, Cadastral Surveyor, under Group No. 2102, surveyed May 2005 - Jan. 2006 - (DCSO records Vol. 56 Page(s) 22311 & Plat T24-8 2011)

The cor. of secs. 19, 24, 25, & 30, on the E. bdy of the Tp., remonumented by the DCSO in 1958, monumented with an iron post 1½" dia., firmly set, projecting 18" above ground, with brass cap (properly) mkd.

from which the remains of BTs mkd by Chandler in 1894

A maple, 33" dia., bears N.14¾°E., 45.8 ft. with fragmentary scribe marks visible on a partially healed blaze. (Rec. N.17°E., 49.5 ft. rescribed by the DCSO in 1958)

A maple 22" dia., bears S.84¾°W., 37.6 ft. with no marks visible (Rec. S.88°W.)

continued next page

CS 67/50-25

4/16/19

TOWNSHIP 24 RANGE 08 POINT IDENTIFIER # 700300

PRIMARY CORNER DESCRIPTION Sec Cor for 24 & 25; 19 & 30, T24-7

Alias _____	Description _____
Alias _____	Description _____
Alias _____	Description _____
Alias _____	Description _____

A decayed fir stump, size indeterminate bears N.51°W., 45.3 ft. with fragmentary scribe marks visible on blaze face lying alongside (Rec. 52.1 ft) and accessories mkd by the DCSO

A chisel mark "+" on a vertical rock face, 5 ft. above ground, bears S.48°E., 7.9 ft. with chisel marks BO alongside.

A cedar, 15" dia., bears S.9¼°W., 38.5 ft. with a healed double blaze.

A fir, 27" dia., bears N.83¾°W., 61.3 ft. with a healed double blaze.

The geographic position (NAD 1983(CORS)) of corner of secs 19, 24, 25, & 30, on the east boundary of the township was determined by a tie from a temporary GPS control point, established utilizing a dual frequency, carrier phase GPS receivers.

Latitude 43°27'42.68"N Longitude 123°35'06.84"W

BLM Dependent resurvey by A. Bert Skeesick, Cadastral Surveyor and Robert H. Browning, Survey Tech, under special instructions and Group No. 2104, surveyed July 2005/Jan. 2006 (DCSO records Vol. 57 Page(s) 22389-90)

The cor. of secs 19, 24, 25, and 30, on the E. bdy. of the Tp., remonumented by the Douglas County Surveyors Office in 1958, monumented with an iron post, 1¼" dia., firmly set, projecting 18" above ground, with brass cap (properly) mkd. from which the remains of bearing trees mkd. by Chandler

37" A maple, 33" dia., bears N.1¼°E., 45.8 ft., with scribe marks BT visible on a partially healed blaze. (Record, N.17°E., 49.5 ft. Rescribed by the Douglas County Surveyors Office in 1958.) S88°W

A maple, 22" dia., bears S.84¼°W., 37.6 ft., with no marks visible. (Record, S.88°W.)

A decayed fir stump, size indeterminate, bears N.51°W., 45.3 ft., with fragmentary scribe marks visible on blaze face lying alongside. (Record, 52.1 ft.) and accessories mkd. by the Douglas County Surveyors Office

A chisel mark "+" on a vertical rock face, 5 ft. above ground, bears S.48°E., 7.9 ft., with chisel marks BO alongside.

16" A cedar, 15" dia., bears S.9¼°W., 38.5 ft., with a healed double blaze.

A fir, 27" dia., bears N.83¾°W., 61.3 ft., with a healed double blaze.

FALLEN TIPPOUT 28" ROOT HOLE ON FACE

NEW BO

4" MAGNAIL IN TOP CNTR SOLID 24" x 1½" TALL D. FIR SAWN STMP N48°W, 85 1/2

CS67150-25

POW 16"
ADD STONE
COLLAR
NOW PROJ 6"

TRUNK IS
SPROUT
27" DBH

S44½°E, 40"

POB NOW ROTTEN

NOW ROTTEN
ALWAYS