

Filed 11/18/2024

DATE: 3/29/19

T245R08WSEC23

PLSS: 600340

1/4  
S23/S24

CREW: PARTY CHIEF - S. J. FLAUSE

TECH - J. A. LORSUNG

MONUMENT:

FROM THE 1958 DCSD RENEWAL

A 2 1/2" DIA. BRASS CAP (MARKED  
AS AT RIGHT) "COUNTY SURVEYORS OFFICE"

ON A 1" I.D.

T 245

IRON PIPE SET

1/4 S23/S24

PLUMB

R8W  
1958

PROJ: 9"

FOUND:

ABOVE  
GROUND

EVIDENCE OF THE TWO O.B.T.'S

A 30" DIA 6 FT TALL ROTTEN AND

BROKEN FIR SNAG WITH A PREVIOUSLY  
OPENED BLAZE SHOWING RESCRIBED

"2" AND "4" ON A ROTTED FACE. THIS SNAG  
BEARS N75 1/2° E, 66 7/8 FT. DIST (AS PER REC).

CS 67/50-21

OVER →

DIETZEN NO. 385-5

(2)

TZ45R2WPLSS 600340 CONT'D

A MOSTLY ROTTED AWAY TIPPED OUT

FIR THE ROOTHOLE OF WHICH BEARS

S78<sup>1</sup>/<sub>2</sub>°W, 13<sup>2</sup> FT. DIST. (AS PER REC.)

1958 SW RENEWAL TREE NOT FOUND.

FROM THE 1988 DC50 RENEWAL

THE 3 NEW B.T.'S ARE FOUND.

A FALLEN 14" DIA. D. FIR WITH A FHNDB.

THE ROOTHOLE OF THIS TREE BEARS S31°E,

7<sup>0</sup> FT. DIST. (AS PER REC.)

A FALLEN 14" DIA. D. FIR WITH A FHNDB.

THE ROOTHOLE OF THIS TREE BEARS S56<sup>1</sup>/<sub>4</sub>°W,

18<sup>5</sup> FT. DIST. (AS PER REC.)

A 19" DIA. G. FIR (LOWLAND WHITE FIR) WITH

A FHNDB; BEARS N66°W, 32<sup>2</sup> FT. DIST.

(AS PER REC.)

FROM THE 2003 RICE RENEWAL

THE ONE NEW B.T.

A 13" DIA. 6 FT. TALL D. FIR STUMP WITH

CS67150-21

→  
NEXT PAGE

(3)

T24SR8WPLSS600340 CONT'D

● A FHSB; BEARS N 13° E, 32 <sup>8</sup>/<sub>8</sub> FT. DIST.  
(AS PER REC.),

● NEW:

A 4" LONG "MAG NAIL" SET IN  
TOP CENTER OF AN 8" DIA 11" TALL

● SOLID FIR STUMP BEARS S 72 <sup>1</sup>/<sub>2</sub>° E, 13 <sup>5</sup>/<sub>5</sub>  
FT. DIST.

DIETZEN NO. 385-5

A 21" DIA. G. FIR SCRIBED "1/4  
S 23" "CSBT" ON A DOUBLE BLAZE;  
BEARS S 40° W, 33 <sup>7</sup>/<sub>7</sub> FT. DIST.

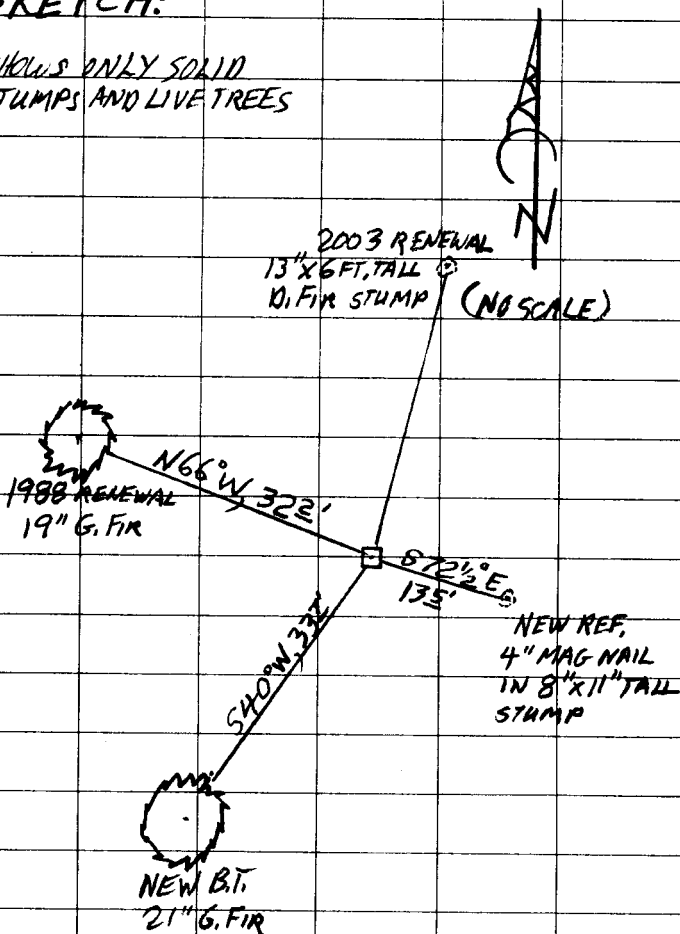
CS 67/5021

T24SR8W PLSS 600340

SKETCH:

SHOWS ONLY SOLID  
STUMPS AND LIVETREES

DIETZGEN NO. 385-5



DECLINATION = 14 3/4° E

CS 67/50-21

PRIMARY CORNER DESCRIPTION 1/4 Cor for Secs. 23 and 24

Alias _____	Description _____
Alias _____	Description _____
Alias _____	Description _____
Alias _____	Description _____

GLO Survey by Henry L. Chandler, U.S. Deputy Surveyor, under Contract #619, dated June 5, 1893 - (DCSO records Vol. 8 Page(s) 3318)

Set a post 3 1/2 ft. long, 3" sq., 24" in the grund for 1/4 sec. cor. marked 1/4 S. on W. face, from which  
A Fir 16" dia., bears N. 75 1/2° E., 10 1/2 lks. dist. mkd. 1/4 S BT  
A Fir 36" dia., bears S. 78 1/2° W., 21 lks. dist. mkd. 1/4 S BT.

ROTTED 30" x 6" FT BROKEN  
FIR SNAG  
VERY ROTTED TIP OUT

"2"  
"4" VIS.

Douglas Co. Surveyors Office - James Byron, Deputy - Milo Godfrey; S. Bilow, crew - May 1, 1958 - C.S. File 49/84

Found both orig. BTs, both alive and in good condition and both check for bearings and distances. I open the NE. BT and find good scribing "S". I do not open the SW. BT, shows good scar.

Set Brass cap at cor. mkd: County Surveyors Office  
T 24 S R 8 W  
1/4 S23 S24  
1958

PROT, 9"

New BTs - I rescribe now 35" R. Fir, N. 75 1/2° E., 66.7 ft. "1/4 S24 CS BT"  
NOEVID 12" R. Fir S. 47 1/2° W., 40.2 ft. scribed "1/4 S23 CS BT"

Douglas Co. Surveyors Office - Randall Smith and Stephen Flause, crew - Feb. 8, 1988 - C.S. File 62/50

Found - 1958 DCSO brass cap, properly mkd., on a 1 3/8" O.D. Iron pipe protruding 8" above ground.

16" now 35" dia., 16 ft. high rotted D. Fir snag, orig. BT, illegible scribing found in previously opened blaze, rescribe visible on an unhealed double blaze, bears N. 75 1/2° E. 66.7 ft. (agrees w/rec.)

36" now 42" dia., 5 ft. high D. Fir stump tipped out of ground to NE. with possible evidence of face, bears S. 78 1/2° W., 13.9 ft. to root hole, (agrees w/rec. Orig. BT)

12" now 12" dia. D. Fir, out of ground, down and rotted, scribing visible on a partially healed double blaze "1/4 S23 CS BT". Rec. position falls on logging skid road, BT was pushed out of position and now bears N. 56° W., 32.3 ft. root wad.

FALLEN 14"

New BTs - 9" D. Fir double blazed and scribed "1/4 S24 CS BT" bears S. 31 1/2° E., 7.0 ft. (DISTINCT ROOT HOLE)

(Cont. Next Page)

FLAUS

3/29/19

TOWNSHIP 24 RANGE 08 POINT IDENTIFIER # 600340

PRIMARY CORNER DESCRIPTION 1/4 Cor. for Secs. 23 and 24

Alias _____	Description _____
Alias _____	Description _____
Alias _____	Description _____
Alias _____	Description _____

19" 11" W. Fir double blazed and scribed "1/4 S23 CS BT" F#013  
 bears N.66°W., 32.2 ft.  
*FALLEN* 14" 7" D. Fir double blazed and scribed "1/4 S23 CS BT" F#018  
 bears S.56 1/4°W., 18.5 ft. *TO ROOT HOLE*  
 Corner lies approx. ~~700~~ *150* ft. West of a dirt road on top of an  
 E-W ridge. *OFF END LANDING LOGGING RR ON N-C CUTLINE*

Ronald Rice, Ward NW INC. - Roseburg Resources Co. - 6/2003 - M142-47

-----

Found - 2 1/2" County Surveyors brass cap dated 1958 with the following accessories:  
 35"x16' D. Fir snag bears N.75 1/2°E., 66.7' (open face)  
 12" D. Fir bears S.31°E., 7.0' (healed face)  
 16" W. Fir bears N.66°W., 32.2' (healed face)  
 10" D. Fir bears S.56 1/4°W., 18.5' (healed face)  
 13" x 6 FT STMP New BT, - *13* 12" D. Fir bears N.13°E., 32.8' blazed, scribed "1/4 S24 BT" F#158

Note - Existing corners or corner established as a result of this survey have a galvanized steel post adjacent to the corner monument and accessories have red painted bands & BT tags where appropriate.

*New BT's*

4" MAC NAIL TOP CNTR 11" DIA X 8" TALL SOLLID FIR STMP BEARS S 72 1/2° E, 13 5

21" G. FIR " 1/4 S23 " CS BT BEARS S 40° W, 33 1'

CS 67/50-21