

PLSS: 173100

T24SR7W531 ANGLE POINT ON SOUTH LINE  
DATE: MARCH 5 2019  
Filed 11/27/2021

CREW: CREW CHIEF - S. J. FLAUSE  
TECH - J. A. LORSUNG

MONUMENT:

FROM THE 1983 GEISLER SURVEY  
A 2 1/2" DIA. ALUMINUM CAP ON A 3/4" I.P.  
IRON PIPE. CAP IS MARKED " T24S R7W "

PROJ: 10"  
PIPE IS RUSTED  
AND CRACKED 2"  
ABOVE GROUND

MC \$31  
\$6  
T25S R7W  
1983  
PLS 1988

FOUND:

- ① TWO B.T.'S FROM GEISLER SURVEY.  
A 38" DIA. D. FIR WITH A FHSB;  
BEARS N4 1/4° E, 105° FT. (REC. N6° E, 104°)
- ② A 22" DIA DIA. D. FIR WITH FULLY HEALED  
HIGH-LOW BLAZE; BEARS N54° W, 9° FT. DIST  
(REC. N60° W, 9° FT.)

NEW:

FND MON. BROKEN OFF AT CRACK. A 5/8" x 30"  
IRON ROD DRIVEN INTO I.P. TO PROJ. 10"  
ALUMINUM CAP AND I.P. SET OVER IRON ROD.

67/50 - 15

25

BLM Record

①

38" FIR N 4 1/4 E (15 BLK)  
1043 FT

②

22" FIR N 56° W (13 1/2 LKS)  
89 FT

CS 67/50-15

BLM  
All rights reserved.

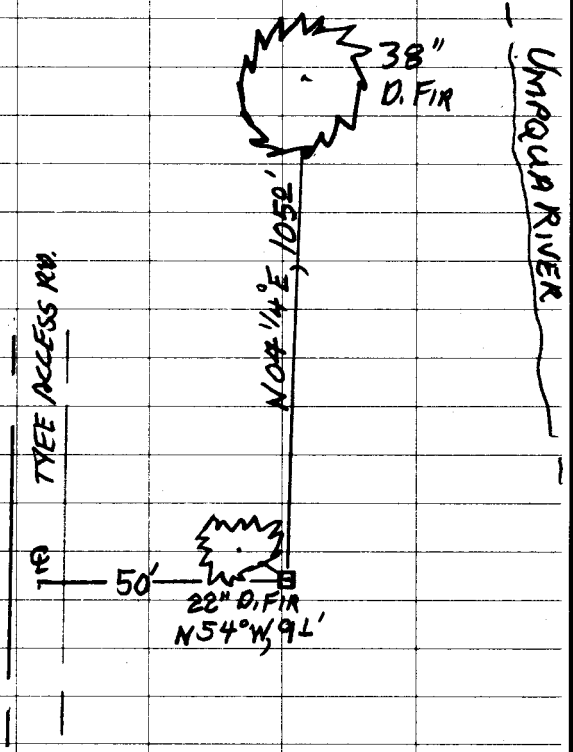
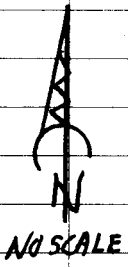
J.L. DARLING CORP. TACOMA, WA 98424-1017  
www.RiteInTheRain.com

(2)

3/5/19

T24SR7W PLSS 173100 CONT'D

SKETCH:



CS 67/50-15

MARCH 5, 2019

TOWNSHIP 25 RANGE 07 POINT IDENTIFIER # 173700

PRIMARY CORNER DESCRIPTION M.C. on N. Bdy. Section 6

Alias 862570 Description M.C. Left bank Umpqua River  
 Alias \_\_\_\_\_ Description \_\_\_\_\_  
 Alias \_\_\_\_\_ Description \_\_\_\_\_  
 Alias \_\_\_\_\_ Description \_\_\_\_\_

Original - Dennis Hathorn, Deputy, Contract #73 dated June 8, 1857 (DCSO records, Vol. 8 Page 3194)

-----

Cedar 12" dia., mark same for meander post, left bank, from which

An Oak 10" dia., bears S.10°E., 24 lks. dist.  
 A Cedar 12" dia., bears N.45°W., 47 lks. dist.

Ronald Geisler, LS #1988, for: Champion International Feb. thru March 1983 - M 93-79

-----<sup>54°</sup>

Set - 2 1/2" Alum. cap set on a 7/8" x 36" Iron pipe, on west bank of Umpqua River near high water line.

22"4" Fir bears N. 60° W., 9.1 ft. scribed X BT. FTHL  
 38"24" Fir bears N. 6° E., ~~104.0~~ ft. scribed MC S31 BT.

Note: No BTs available south of line. <sup>105°</sup><sub>4 1/4"</sub>

Fd. & used on BLM dependent resurvey by Bryan S. Seibold & Wayne Rogers, Cadastral Surveyors, under Group #1862, surveyed Sept.-Dec. 1997 - (DCSO record Vol. 53 Page(s) 20302)

- Prov 10" Break at 2" above ground.

Mon 15x50' EAST FROM E OF TYER ACCESS RD.

CS 67/50-15

**Dependent Resurvey of a Portion of the North Boundary,  
T. 25 S., R. 7 W., Willamette Meridian, Oregon**

CHAINS	
	Descend over W. slope.
5.35	County Road No. 33 (Tyee Road), asphalt surface, 40 lks. wide, bears N. 10° W. and S. 10° E.
6.184	<p>A witness cor. to the cor. of secs. 5, 6, 31 and 32, established by Larry D. Bishop, Registered Professional Land Surveyor No. 896, in 1970, recorded in the Douglas County Surveyors Office map file, M33-68, perpetuated by Ronald G. Geisler, Registered Professional Land Surveyor No. 1988, in 1983, recorded in the Douglas County Surveyors Office map file, M93-79; monumented with an iron post, 1½ ins. diam., firmly set, projecting 10 ins. above ground, and in a collar of stone, with brass cap mkd.</p> <p align="center">1970 T 24 S R 7 W 896 W C 31 32 6 5 T 25 S R 7 W</p> <p>from which the remains of bearing trees mkd. by Bishop</p> <p>An oak, 17 ins. diam., bears S. 61¼° W., 49 lks. dist., with healed blaze.</p> <p>A sawed cedar stump, 27 ins. diam., bears N. 48° W., 17½ lks. dist., with healed double blazes.</p> <p>and bearing trees mkd. by Geisler</p> <p>An oak, 17 ins. diam., bears N. 88½° W., 50 lks. dist., with healed double blazes.</p> <p>An ash, 12 ins. diam., bears N. 8½° W., 28½ lks. dist., with healed double blazes.</p> <p>and a new bearing tree</p> <p>The center trunk of a triple trunk alder, 11 ins. diam., bears S. 29 3/4° E., 87 lks. dist., mkd. X BT.</p> <p>From this point, the Douglas County Surveyor's Office horizontal control station "U14," at latitude 43° 25' 51.077" N., longitude 123° 33' 52.296" W. (NAD 1927), bears S. 18° 28' 12" W., 11.178 chs. dist. (mean bearing and sea level distance); monumented with a bronze disk, set flush in the bridge abutment of the Tyee Access bridge, with top mkd. DOUGLAS CO. SURVEYORS OFFICE U14 1972.</p>

CS 67/50-15

**Dependent Resurvey of a Portion of the North Boundary,  
T. 25 S., R. 7 W., Willamette Meridian, Oregon**

CHAINS	
	<p>N. 89° 55' 36" W., beginning new measurement.</p> <p>Across level ground.</p>
2.159	<p>True point for the cor. of secs. 5, 6, 31 and 32, identical with the meander cor. of secs. 5 and 6, on the right bank of the Umpqua River, at projected bearing and Bishop's distance from the witness cor. to the cor. of secs. 5, 6, 31, and 32 (Shown on plat recorded in the Douglas County Surveyors Office map file, M33-68). Point falls in the Umpqua River and is not monumented; there is no remaining evidence of the original cor.</p> <p>From this true point, a point established as a meander cor. by Ronald G. Geisler, Registered Professional Land Surveyor No. 1988, in 1983, recorded in the Douglas County Surveyors Office map file, M93-79, bears N. 89° 58' 35" W., 9.171 chs. dist. This point is not a proper reestablishment of the meander corner and is accepted for alignment only, monumented with an iron post, 1 in. diam., firmly set, projecting 12 ins. above ground, with aluminum cap mkd. T24S R7W 1983 S31 S6 MC T25S R7W PLS1988, from which bearing trees mkd. by Geisler</p> <p style="text-align: right;">104<sup>28</sup></p> <p>A fir, 31 ins. diam., bears N. 4¼° E., 158 lks. dist., with healed blaze.</p> <p style="text-align: right;">8<sup>91</sup></p> <p>A fir, 13 ins. diam., bears N. 58° W., 13½ lks. dist., with healed blaze.</p> <p>From the Geisler meander corner, the true point for the E1/16 sec. cor. of secs. 6 and 31 bears N. 89° 59' 04" W., 11.006 chs. dist., determined at record bearing and distance from Geisler's witness cor.; not monumented.</p> <p>From the true point for the E 1/16 sec. cor. of secs. 6 and 31, the witness cor. to the E 1/16 sec. cor. of secs. 6 and 31, established by Ronald G. Geisler, Registered Professional Land Surveyor No. 1988, in 1983, recorded in the Douglas County Surveyors Office map file, M93-79, bears S. 0° 06' 23" W., 1.515 chs. dist.; monumented with an iron post, 1 in. diam., firmly set, projecting 6 ins. above ground, with aluminum cap mkd. WC 100.0' E1/16 S31 S6 T24S R7W T25S 1983 PLS1988 and an arrow pointing to the true point, from which the remains of the bearing trees mkd. by Geisler</p> <p>A sawed fir stump, 30 ins. diam., bears S. 75° E., 24½ lks. dist., with scribe marks E1/16 S6 BT visible on partially healed blaze.</p> <p style="text-align: right; font-size: 1.2em;">CS 67/50-15</p>