

GOVERNMENT CORNER RESTORATION FORM  
DOUGLAS COUNTY SURVEYOR

TOWNSHIP 27S RANGE 03W SECTION 26,27 PLSS/GCDB No. 500240  
CORNER DESIGNATION: 1/4 Corner of Sections 26 & 27

FILED  
Date: 11/17/2021  
By: SC  
Corner Form: CS 67/50-12  
Field Notes: 4ms  
DOUGLAS COUNTY SURVEYOR

CORNER HISTORY, PREVIOUS RENEWALS OR SURVEYS:

- SEE DCSO SURVEY & CORNER RECORDS FOR PLSS 500240

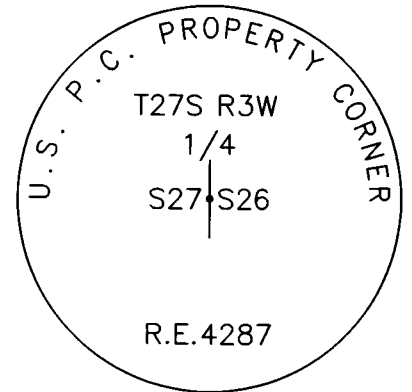
MONUMENT (CONDITION AND SOURCE):

- Found a 1" o.d. iron pipe, firmly set, projecting 19" above the ground with a 2 1/2" diam. aluminum cap marked as noted:

DATE: February, 12, 2019

Condition Report Only  
 Not Found  
 Renewed  
 Unrecorded  
 Surveyed In  
 Referenced Out

MONUMENT DETAIL



ACCESSORIES (CONDITION, SOURCE & RECORD):

Original Bearing Trees by Flint in 1882:

- A 48" X 3.5' tall D. fir stump bears S. 55° E., 5.0 ft. (3.3' Record distance was a face measurement)

Bearing Trees by Shrum in 1963:

- A 27" X 2.5' tall rotted D. fir stump bears S. 52° W., 22.0 ft.

Bearing Trees by Geisler in 1984:

- A 23" X 3' tall D. fir stump bears N. 82° W., 37.2 ft. w/fully healed blaze.

Bearing Trees by Edwards in 2012:

- A 7" X 2' tall shattered D. fir stump bears S. 16° E, 12.2 ft., w/partial visible scribing.

New Bearing Trees:

- A 8" Magnail placed in the top center of a 24" X 1.5' tall sawn D. fir stump bears N. 3° E., 68.5 ft.
- A 8" Magnail placed in the top center of a 24" X 1' tall sawn D. fir stump bears S. 32° E., 13.0 ft.
- A 15" D. fir bears S. 70 1/4° W., 50.0 ft., scribed "1/4S27CS", "BT"
- A 8" Magnail placed in the top center of 1984 Geisler stump described above.

LOCATION & COMMENTS:

The corner falls near an old skid road on a clearcut approximately 20 ft. from the cutting corner.

All bearing trees have BT Tags attached. All new bearing trees have double blazed faces with bearing measured to the center of the trees at the root crown and distances measured to a 4" Magnail in the side and center of the root crown.

GEODETIC COORDINATES

LATITUDE: 43° 05' 27.988396574"N  
LONGITUDE: 123° 37' 21.303674470"W  
DATUM: NAD 83  
SOURCE: GeoXT6000  
FILE PATH: I:\SurData\GPS\LAT&LONG

COMPASS DECLINATION: 14 3/4° E.

AGENCY: DCSO  
PARTY CHIEF: S. J. Flause  
WITNESSES: J. Lorsung  
NOTES: ATTACHED

CS 67/50-12

PLSS: 500240

T 275 R 03 W 526

DATE: 02/12/19

CREW: 27<sup>1/4</sup>/26

PARTY CHIEF - S. J. FLAUSE

TECH - JEFF LORSUNG

MONUMENT:

2 1/2" AL. CAP / 1" O.D. I.P. "U.S. P.C. PROPERTY COR."  
T 275 R 3W

1/4  
27/26 PROTS: 19 INS.

FOUND:

R.E. 4287

ONE O.B.T: 48" x 3 1/2 FT. VERY ROTTED FIR STUMP,  
BEARS S 55° E, 5° FT. (3 3/4 FT TO ORIG. FACE)

FROM SHRUM 1963: 27" x 2 1/2 FT. TALL ROTTED

FIR STUMP BEARS S 52° W, 22° FT (AS PER GEISLER)

FROM GEISLER 1984: 23" x 3 FT TALL D. FIR STUMP WITH

FHDB BEARS N 82° W, 37 1/2 FT (PER RECORD

NEW:

OVER →

8" MAGNAIL IN TOP CENTER 1984 GEISLER 13T.  
(DESCRIBED ABOVE) BEARS N 82° W, 37 1/2 FT. DIST.

8" MAGNAIL IN TOP CENTER OF 24" DIA. 1 1/2 FT.  
TALL SAWN D. FIR STUMP, BEARS N 03° E, 68 1/2 FT. DIST.

8" MAGNAIL IN TOP CNTR OF 24" DIA. 1 FT. TALL SAWN  
D. FIR STUMP, BEARS S 32° E, 13 1/2 FT. DISTANT

15" D. FIR SCRIBED "1/4 S 27 CS" "BT" BEARS S 70 1/4 W, 10 1/2 FT. DIST

11 DARLING CORP TACOMA WA 98404 1117  
www.Rite:theRain.com

214

67/50-12

CS

FOUND: (CONT'D)

FROM EDWARDS 2012:

7" DIA. X 2 FT TALL SHATTERED FIR STUMP  
SHOWING A PARTIALLY HEALED BLAZE WITH  
PARTIAL SCRIBING VISIBLE BEARS SIG<sup>2</sup>E, 12<sup>2</sup> FT.

DEC 14<sup>3/4</sup> E

CS 67/50-12

314

TOWNSHIP 27 RANGE 03 POINT IDENTIFIER # 500240

PRIMARY CORNER DESCRIPTION 1/4 Cor Secs 26 & 27

Alias _____	Description _____
Alias _____	Description _____
Alias _____	Description _____
Alias _____	Description _____

GLO Survey by Sam C. Flint, Under Contract #454, dated June 19, 1882 (DCSO Records Vol. 12 Page(s) 4997)

Set cedar post, 3 ft. long, 4" sq., firmly in the ground for <sup>TO FACE</sup> 48" x 3 1/2" TALL  
 1/4 sec. cor. mkd 1/4 S on E & W faces, from which <sup>TO CRE</sup> 3' 30" 5' 0" VERY ROTTEN STUMP  
 A fir, 40" dia., bears S. 55° E., 5 lks., mkd: 1/4 S BT.  
 A fir, 14" dia., bears N. 70° W., 30 lks., mkd: 1/4 S BT.  
 1980

Thomas E. Shrum, Jr. - For: US Plywood, INC - April 1963 - C.S. File 51/254

Found - 3/4" iron rod.  
 48" D. Fir stump, S. 55° E., 3.3 ft. (orig. BT), 4"x6" alum. tag 1952  
 27" D. Fir S. 48° W., 19.0 ft., 4"x6" alum tag, 1952.  
 Set - 2 1/2" alum. cap.  
 11" W. Fir S. 73° W., 18.1 ft. mkd: 1/4 S27 BT.  
 6" Yew N. 40° E., 38.6 ft. mkd: 1/4 S26 BT.  
 NOT FOUND

Ronald G. Geisler, LS 1988 - For: Champion International Cor. - Jan. 1984 - M95-77 & C.S. 58/278

Found - 1963 Alum. cap and iron pipe set by RE 4287. 1963  
 50" fir stump bears S. 51° E., 6.4 ft. (Rec. S. 55° E. 3.3 ft. to face). No scribing found. (orig.)  
 15" yew bears N. 40° E., 36.6 ft. (Rec 38.6 ft) Scribe marks visible (1963)  
 27" x 2 1/2" SIMP 27" fir stump bears S. 52° W., 22.0 ft. No scribing  
 ROTTEN D. evident. (unrecorded)  
 New BT - 8" fir bears N. 82° W., 37.2 ft. scribed: 1/4 S27 BT. FHDB  
 23" x 3' SAWN STUMP

FD. Ok by Mark Heimburger 11/1996 - M126-11

David Edwards - For: Seneca Jones Timber - May 2012 - M163-57

Found - Alum. cap per RE 4287  
 15" Fir N. 82° W., 37.2'  
 Yew is down  
 New BT - 6" Fir scribed "1/4 S26 BT" brs. S. 15° E., 12.2 ft. <sup>S 16° E</sup>  
 7" x 2' SHATTERED FIR STM PHB PARTIAL SCR VIS

CS 67/50-12  
4/14

NEW REF 8" MAGNAIL IN N82°W STMP

15" D. FIR "1/4 S27 @ S" BT" S70 1/4° W, 50'

24" x 1 1/2" TALL SAWN D. FIR STMP 8" MAGNAIL TOP CNTR BEARS N03°E 68.5'  
 24" x 1 FT TALL SAWN D. FIR STMP 8" MAGNAIL TOP CNTR BEARS S32°E 13.2'