

GOVERNMENT CORNER RESTORATION FORM
DOUGLAS COUNTY SURVEYOR

TOWNSHIP 30 RANGE 1 SECTION 23 PLSS/GCDB No. 540300

CORNER DESIGNATION: 1/4 Corner of Sections 23 & 24.

CORNER HISTORY, PREVIOUS RENEWALS OR SURVEYS:

- SEE DCSO SURVEY & CORNER RECORDS FOR PLSS 540300

MONUMENT (CONDITION AND SOURCE):

- Found a 1" i.d. iron pipe, firmly set, projecting 8" above the ground in a 12" diam. x 5" high mound of stone with a 3 1/4" diam. brass cap marked as noted:

ACCESSORIES (CONDITION, SOURCE & RECORD):

Original Bearing Trees by Mensche for GLO in 1922:

- No Evidence of original trees. Root holes possibly washed away by seasonal stream.

New Bearing Trees:

- A 17" diam.d. fir bears N. 88° E., 13.7 feet scribed "1/4S23CS", "BT".
- A 13" diam. p. pine bears S. 2° W., 19.7 feet scribed "1/4S26CS", "BT".
- A 26" diam. i. cedar bears S. 77 1/2° W., 31.0 feet scribed "1/4S26", "CSBT".
- A 13" diam. d. fir bears N. 37° W., 7.6 feet scribed "1/4S23", "CSBT".

LOCATION & COMMENTS:

The corner falls on flat bench land Northeasterly of gravel access road approximately 150 ft. in a mixed fir and pine forest, South 45° West 10.0' of a North running seasonal stream.

All bearing trees have BT Tags attached. All new bearing trees have double blazed faces with bearing measured to the center of the tress at the root crown and distances measured to a 4" mag nail in the side and center of the root crown.

GEODETIC COORDINATES

LATITUDE: 42°56'44.540263291" N.

LONGITUDE: 122°47'34.800852750" W.

DATUM: NAD 83

SOURCE: GeoXT6000

OREGON SOUTH-ZONE3602:

FILE PATH: I:\SurData\GPS\LAT&LONG

COMPASS DECLINATION: 14 3/4° E.

AGENCY:DCSO

PARTY CHIEF: S. J. Flause

WITNESSES: J. Lorsung

NOTES: ATTACHED

FILED
Date: 11/17/2024

By: X

Corner Form: CS 67/50-11

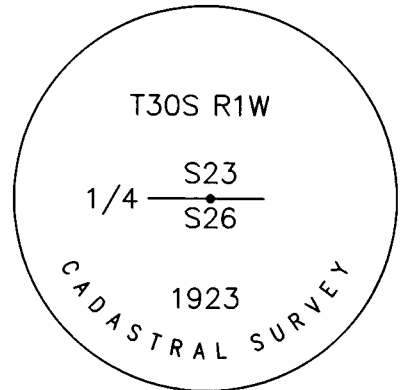
Field Notes: 2015

DOUGLAS COUNTY SURVEYOR

DATE: January, 23, 2019

Condition Report Only
 Not Found
 Renewed
 Unrecorded
 Surveyed In
 Referenced Out

MONUMENT DETAIL



CS 67/50-11

T309 R1W

540300

1/23/19

1/4 23

26

PROT: 0"

MENSUM 1922

10" CEDAR S 01° W, 15¹⁸

12" FIR N 34° W, 11²²

DIETZGEN NO. 388-B

NR BTs

17" D. FIR "1/4 523 CS" BT" N 88° E 13²

13" P. PINE "1/4 526 CS" BT" S 02° W, 19²

26" L CEDAR " 577¹² W, 31²

13" N. FIR "1/4 523" CS BT" N 37° W, 7⁶

NORTH RUNNING
SEASONAL STREAMS CONFLUENCE

N 45° E 10'

CS 67/50-11

2/2