

GOVERNMENT CORNER RESTORATION FORM
DOUGLAS COUNTY SURVEYOR

TOWNSHIP 22 RANGE 5 SECTION 3,4,9,10 PLSS/GCDB No. 400600

CORNER DESIGNATION: Section Corner

FILED
Date: 11-10-2021
By: JC
Corner Form: CS67/49-22
Field Notes: 3 pgs
DOUGLAS COUNTY SURVEYOR

CORNER HISTORY, PREVIOUS RENEWALS OR SURVEYS:

- SEE DCSO SURVEY & CORNER RECORDS FOR PLSS 2205400600

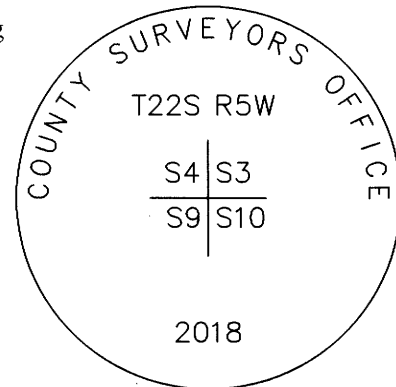
MONUMENT (CONDITION AND SOURCE):

- Found a 1" x 1" x 36" Haines "T" iron broken in 2 peices out of position.
- Set a 1" i.d. iron pipe 32" long, projecting 8" above the ground (Haines "T" deposited along the North edge) with a 2 1/2" diam. brass cap marked as noted:

DATE: October, 02, 2018

- Condition Report Only
- Not Found
- Renewed
- Unrecorded
- Surveyed In
- Referenced Out

MONUMENT DETAIL



RESET PROCEDURE:

We replaced the out of position monument using bearing and distances from the 1965 bearing trees by Rodgers for DCSO in 1965 and the 2011 bearing trees by Flause for DCSO.

New Bearing Trees:

- No new bearing objects.

LOCATION & COMMENTS:

The corner falls on a gentle Northerly slope in fir forest approximately 20 ft. Southwest of the access road.

All bearing trees have BT Tags attached.

GEODETTIC COORDINATES

LATITUDE:

LONGITUDE:

DATUM: NAD 83

SOURCE: GeoXT6000

OREGON SOUTH-ZONE3602:

FILE PATH: I:\SurData\GPS\LAT&LONG

COMPASS DECLINATION: 14 3/4° E.

AGENCY:DCSO

PARTY CHIEF: S. J. Flause

WITNESSES: J. Lorsung

NOTES: ATTACHED

CS 67/49-22

T 22 R 5 S 3,4,9,10 DATE: 10-2-18

FOUND: HAINES 1x1x36 IRON "T"
LOOSE ON GROUND, BROKEN IN
2 ~~pieces~~

ACC FOUND: ALL 2011 BT'S
USED TO SET NEW MONUMENT

NEW: NONE

HAINES "T" SET AGAINST
~~SOUTH~~ NORTH SIDE OF NEW I.P.

18" x 2 1/4" x 1/2" PLATE FOUND
Approx. AT CORNER SET AGAINST
SOUTH SIDE OF I.P.

FILED

NOV 10 2021

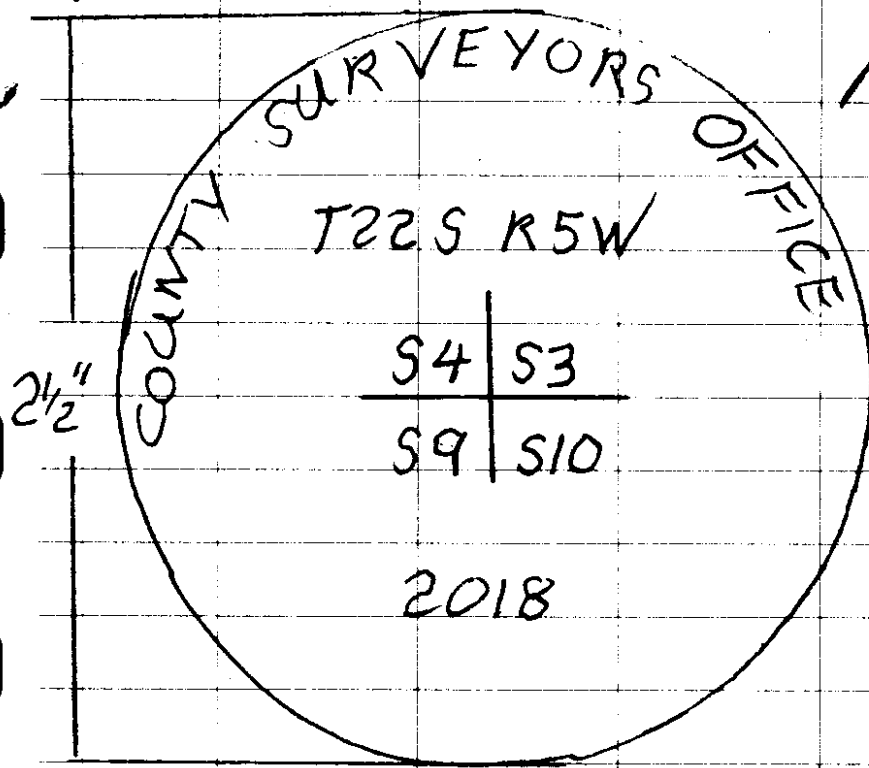
C.S. FILE 67/49-22

(11)

ALL WEATHER WRITING PAPER

J.L. DARLING CORP TACOMA, WA 98424-1017
www.RiteInTheRain.com

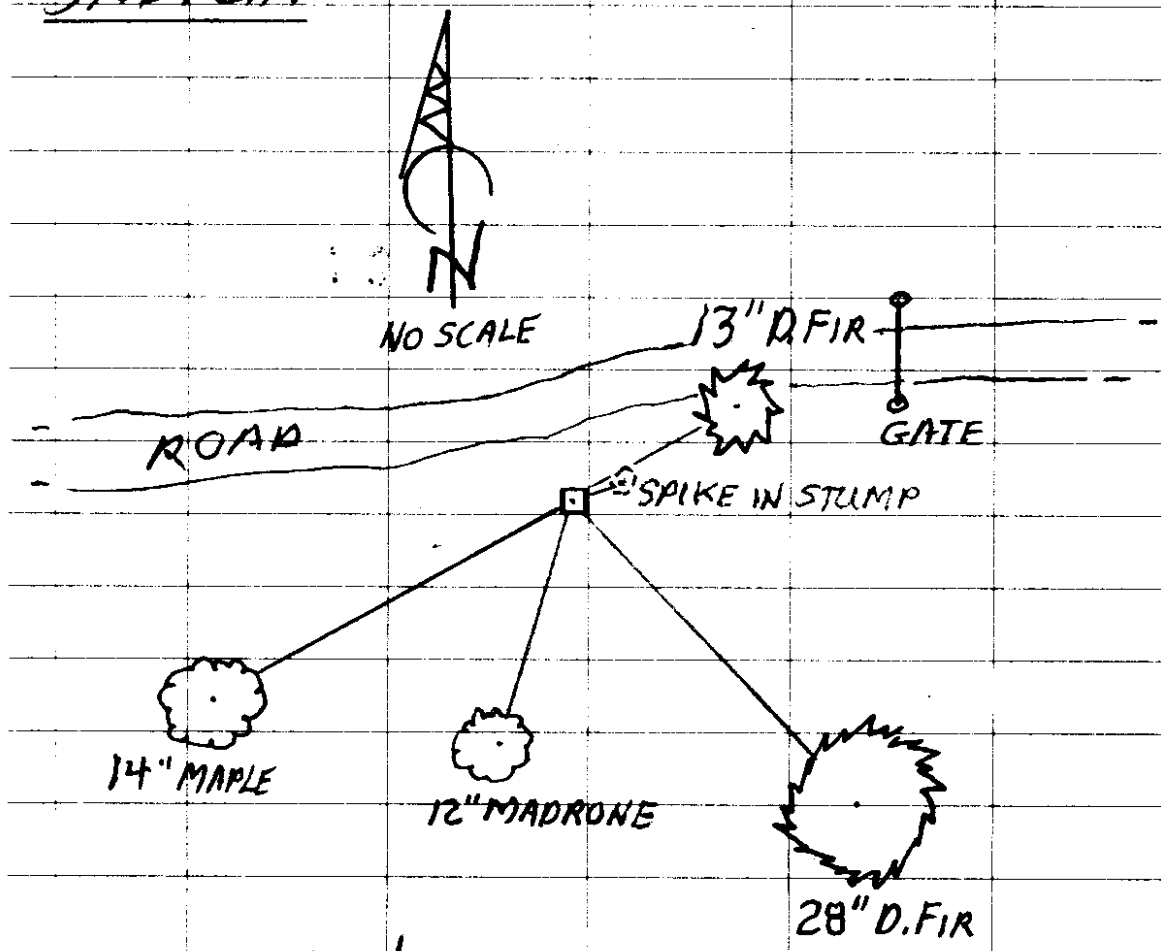
No. P12



PLSS 400600

PROJ. 8 INCHES

SKETCH:



CS 67/49-22 (2)