

APRIL 6, 2017

T27S, R06W, SE D1C50, PLSS 050060

WITNESS CORNER (REFERENCE MONUMENT)

MONUMENT FOUND: FROM THE 1961 DCSD RENEWAL, A 2 1/2" DIA. BRASS CAP ON A 1" L.D. I.P. SITTING PLUMB PROTRUDING 14" ABOVE GROUND. THE BRASS CAP OF THE FOUND MONUMENT IS MARKED AS FOLLOWS

" COUNTY SURVEYORS OFFICE "

WIT. COR

S. E. COR.

D. L. C. 50

50' EAST TO
COR.

T27S R6W
1961

ACCESSORIES FOUND:

NO ORIGINAL BEARING TREES REFERENCING THE TRUE CORNER POSITION REMAIN.

FROM THE 1961 DCSD RENEWAL TWO TREES REFERENCING THE "WITNESS CORNER".

A 9" W. OAK, NOW A 14" DIA. W. OAK WITH A FULLY HEALED SINGLE BLAZE; BEARS S79°W, 197 FT. DISTANT (AS PER RECORD).

AN 8" B. OAK, NOW TIPPED OUT OF POSITION, ONLY A ROOTHOLE REMAINS AND BEARS N10 1/2° W, 30° FT. DISTANT (AS PER RECORD).

FROM THE 1970 DCSD RENEWAL THE

FILED

NOV 10 2021 C.B. FILE 67149-20

(4)
T275, R06W, PLS 050060 (CONT'D)

● ONE NEW BEARING TREE. A 12" B. OAK NOW
A 13 INCH DIA. B. OAK WITH A FULLY HEALED
DOUBLE BLAZE; BEARS N 22° W, 35 ± FT.

● DISTANT (AS PER RECORD).

NEW ACCESSORIES:

● AN 11" DIA. W. OAK, SCRIBED "SE DLC 50"
"CS BT" ON A DOUBLE BLAZE; BEARS N 36 1/2° E,
17 ± FEET DISTANT.

A 15" MADRONE SCRIBED "SE DLC 50"
"CS BT" ON A DOUBLE BLAZE; BEARS
S 21 1/2° W, 42 ± FT. DISTANT,
DECLINATION 15° E

● B.C. MONUMENT SITUATED AS PREVIOUSLY
DESCRIBED AND ON A MODERATE
ESE SLOPE IN A MOSTLY OAK WOODLAND.

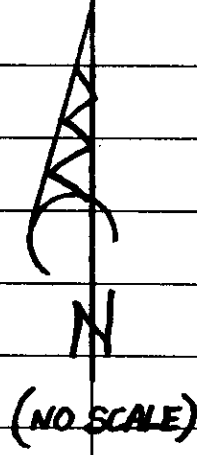
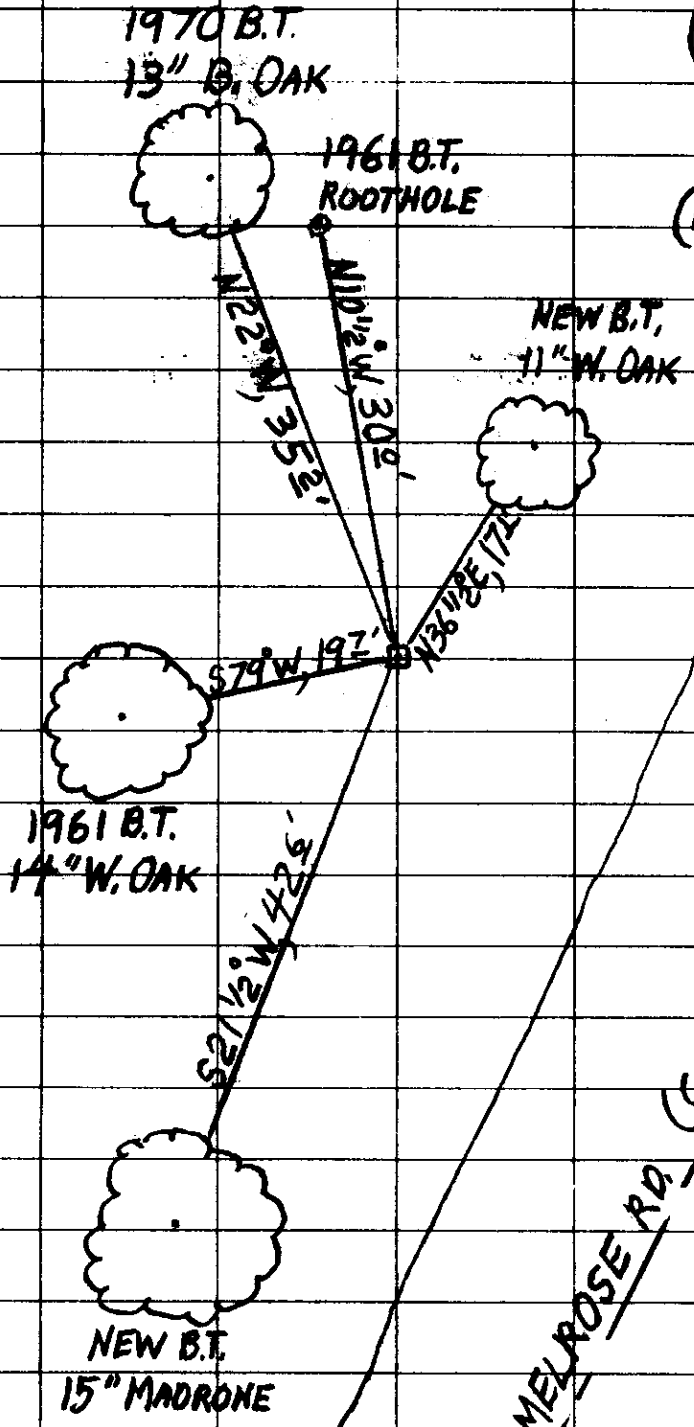
✕ STEPHEN J. FLAUSE

✕ MIKE S. KOCH

✕ Stephen John Flause

CS 67/49-20

(3)
T215, R06W, PLSS 050060 (CONT'D)



CB 67148-20