

FILED NOV 10 2021 SEPT. 7, 2016

T30S, R04W, SW DLG 48, PLSS 048030

### MONUMENT FOUND:

NO EVIDENCE OF 1889 STONE MONUMENT OR IRON BAR, FOUND IN 1922, IS SEEN (COULD BE BURIED DEEPER THAN MONUMENT THAT IS FOUND BUT ARE IMPRACTICABLE TO DIG FOR).

FROM THE 1947 SUBDIVISION PLAT FILED AS DAYS CREEK HEIGHTS SUBDIVISION VOL. 7, PAGE 40, A 2" X 36" GALVANIZED IRON PIPE; NOW A 2" DIA. IRON PIPE BURIED 9" BELOW A.C. ROAD SURFACE.

THE POSITION OF THIS MONUMENT WAS DETERMINED FROM FOUND EVIDENCE BY WENDEROTH IN THE 1945 DC SO RENEWAL AND LATER MONUMENTED WITH A 2" I.P. AS THE INITIAL POINT OF DAYS CREEK HEIGHTS SUBDIVISION. THE SUBDIVISION WAS ALSO DONE BY WENDEROTH.

### ACCESSORIES FOUND:

NO EVIDENCE OF THE O. B. T. REMAINS,

C.S. FILE 67/49-14

(E)  
T30S, R04W, PLSS 048D30 (CONT'D)

NO EVIDENCE OF THE 1922  
ACCESSORIES REMAINS.

FROM THE 1945 RENEWAL EVIDENCE  
OF ONE ACCESSORY FOUND, THE SE  
CORNER OF THE LYLES SERVICE STATION  
NOW THE SE CORNER OF THE DAYS  
CREEK STORE; BEARS  $S63^{\circ}3/4'W$ ,  
 $92^{\underline{7}}$  FT. DISTANT (RECORD  $S64^{\circ}24'W$ ,  
 $92^{\underline{5}}$  FT.). MEASUREMENT MADE TO WALL  
CORNER AT FOUNDATION LEVEL.

THE 1945 DAYS CREEK STORE HAS  
BEEN DESTROYED, NO USABLE EVIDENCE  
REMAINS.

FROM THE 1963 RENEWAL THE  
ONE ADDED ACCESSORY, THE SW CORNER  
OF LOT 1, DAYS CREEK HEIGHTS, A 1"  
IRON PIPE NOW A  $3/4"$  DIA. IRON PIPE, 5"  
BELOW A.C. SURFACE IN THE U.S. POST  
OFFICE PARKING LOT; BEARS  $S18^{\circ}26'30"E$ ,  
 $95^{\underline{25}}$  FT. DISTANT (RECORD MOST RECENT  
SURVEY  $S18^{\circ}26'30"E$ ,  $95^{\underline{38}}$ ; ORIGINAL  
RECORD  $S18^{\circ}19'26"E$ ,  $95^{\underline{42}}$  FT.)

CS 62/49-16 2

(3)  
T305, R04W, PLSS048030 (CONT'D)

ALSO A MONUMENT (UNDESCRIBED) NOTED IN THE 1922 RENEWAL AS A DEED DESCRIPTION WITNESSED COR. AND SHOWN AS A 1" IRON PIPE IN THE DAYS CREEK HEIGHTS SUBDIVISION, IS NOW BURIED UNDER A.C. (MONUMENT NOT PRACTICABLE TO DIG UP DUE TO LOCATION IN TRAVELLED ROADWAY). FOR THIS MONUMENT A STRONG AND NARROWLY DELIMITED MAGNETIC SIGNAL BEARS  $N0^{\circ}14'W$ , 198 $\frac{3}{4}$  FT. DISTANT (RECORD NORTH, 198 $^{\circ}$  FT.).

#### NEW ACCESSORIES:

THE MOST SW'LY EDGE OF THE LOWEST BRICK AT THE SW CORNER OF THE DAYS CREEK U.S. POST OFFICE (A CONCRETE BRICK STRUCTURE, BUILT AFTER 2000); BEARS  $S34^{\circ}20'03''E$ , 158 $\frac{61}{100}$  FT. DISTANT.

THE NE CORNER OF THE PRESENT DAY DAYS CREEK STORE (FORMER LYLES SERVICE STATION) MEASURED AT THE WALL CORNER AT THE FOUNDATION LEVEL; BEARS  $N88^{\circ}W$ ,

CS 62/49-163

(4)  
T303, R04W, PLSS048030 (CONT'D)

104<sup>3</sup> FT. DISTANT.

(BASIS OF BEARING FOR ABOVE  
MEASUREMENTS IS TIE BETWEEN  
DLC COR. AND SW COR. LOT 1  
DAYS CREEK HEIGHTS SUBD'Y,  
AS MEASURED IN DCSD MAP FILE  
M55-80)

⌘ S.J. FLAUSE

⌘ Stephen John Flause

† M.S. KOCH

CS 62/49-14

(5)

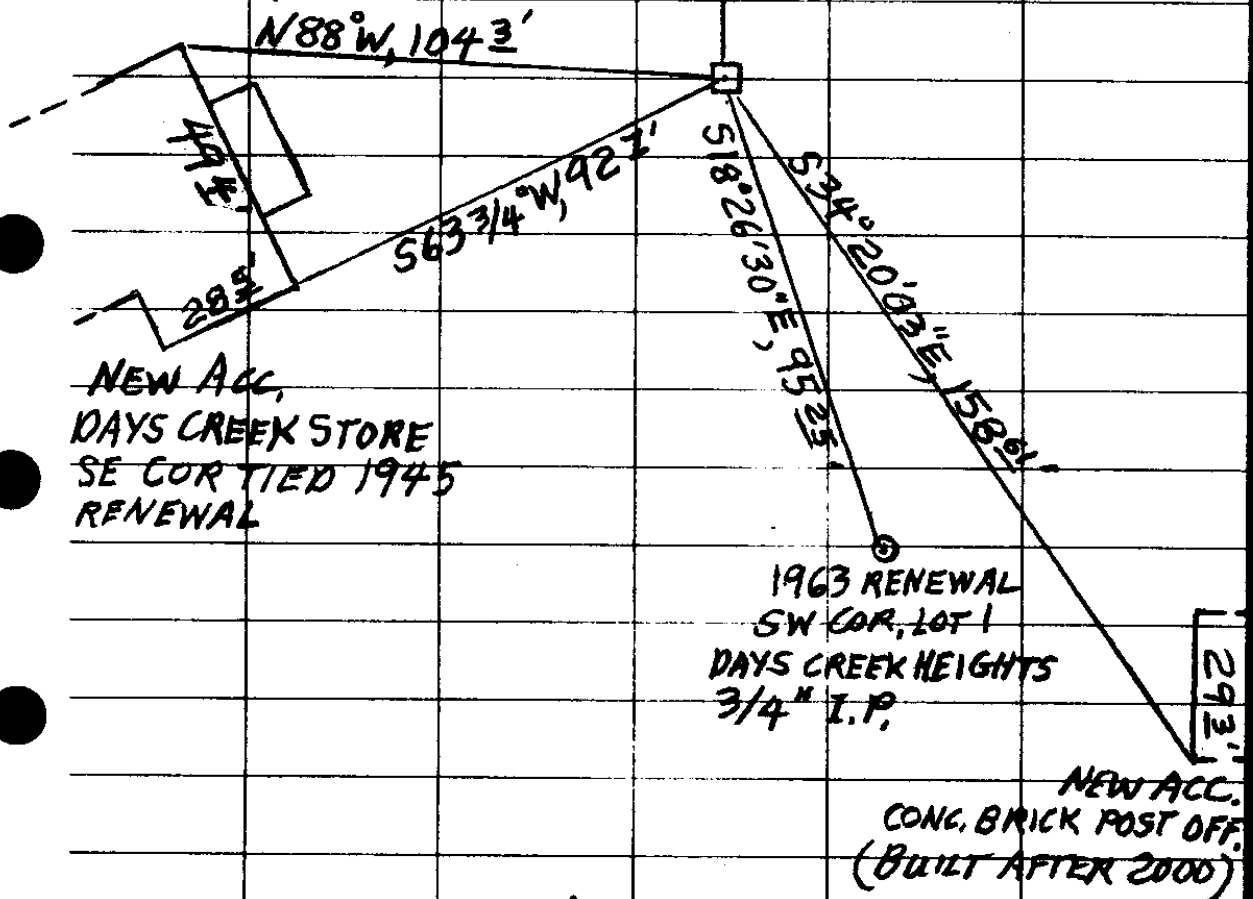
1922  
RENEWAL  
WITNESS 3 CHNS  
NORTH

(METAL DETECTED  
NOT PRACTICABLE TO DIG)

N0°14'W, 198 3/4'



(NO SCALE)



NEW ACC.  
DAYS CREEK STORE  
SE COR TIED 1945  
RENEWAL

1963 RENEWAL  
SW COR, LOT 1  
DAYS CREEK HEIGHTS  
3/4" I.P.

NEW ACC.  
CONC. BRICK POST OFF.  
(BUILT AFTER 2000)

CS 62/49-16 95