

T^h 20

NOV 18 2021

NOVEMBER 9, 2015

T30S, R05 W, NW DLG 62, PASS 062020

CORNER IS FOUND AS DESCRIBED BY DCSD IN 2005 EXCEPT AS FOLLOWS:

FOUND 12" DIA. OREGON ASH, NOW A 13" DIA. OREGON ASH (BLAZED AS NOTED IN 2005); BEARS N6°E, 10⁹ FT. DISTANT (AS PER ORIGINAL 1974 RECORD).

FOUND 9" OREGON ASH, NOW A ROTTEN AND BROKEN 10" DIA. x 3 FT. TALL ASH STUMP WITH NO BLAZE EVIDENCE REMAINING. THE REST OF THIS B.T., MISSING ITS BLAZE, BUT STILL HAVING THE 2005 BEARING TREE TAG ATTACHED WAS RECENTLY FOUND APPROX. 84 MILES DOWN RIVER AT THE BULLOCK BRIDGE (T24S, R7W, SEC. 13).

THIS STUMP'S B&D AGREE WITH 2005 MEASUREMENT.

FOUND 30" W. OAK, NOW A 32" W. OAK BEARING AND DISTANCE, AND DESCRIPTION AS PER 2005 RENEWAL.

NEW IN 2005 BIG LEAF MAPLE, NOW 18" DIA WITH DOUBLE BLAZE ALMOST FULLY HEALED, BEARING AND DISTANCE AS PER RECORD.

U.S. FILE 07149-15

(2)
T305, R05 W, PLS 062020 (CONT'N)

NEW ACCESSORIES:

A 12" DIA. ASH SCRIBED "NW PLC 62"
"CSBT" ON A DOUBLE BLAZE; BEARS
N 73 1/2° W, 30⁸ FT. DISTANT.
DECLINATION 15 1/4° E

THIS CORNER PREVIOUSLY DESCRIBED
AS BEING ON THE HIGH BANK OF THE
SOUTH UMPQUA RIVER IS NOW SITU-
ATED AT THE TOE OF THE RIVER'S LEFT
HIGH BANK.

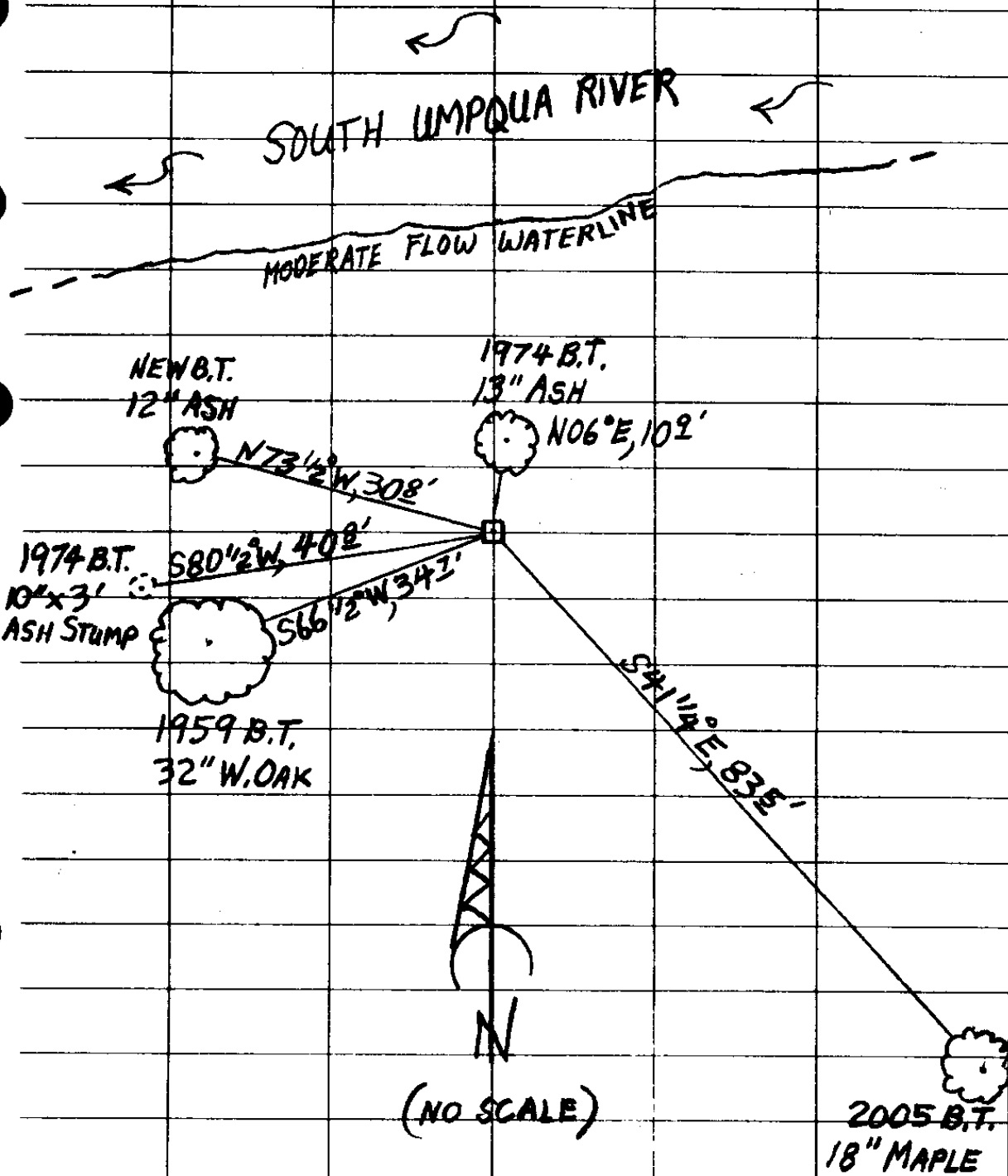
π STEPHEN J. FLAUSE

⊕ MIKE S. KOCH

⊞ Stephen John Flause

CS 62/49-15 (2)

(3)
T30S, R05W, PL55 062020 (CONT'D)



CS 67/49-15 (3)