

GOVERNMENT CORNER RESTORATION FORM  
DOUGLAS COUNTY SURVEYOR

TOWNSHIP 30S RANGE 04W DLC No. 48 PLSS/GCDB No. 30-04-048060

CORNER DESIGNATION: ESE CORNER ANDREW THOMAS  
DLC No. 48

ESE  
DLC 48

CORNER HISTORY, PREVIOUS RENEWALS OR SURVEYS:

- ORIGINAL CORNER ESTABLISHED BY BOWMAN & BURNETT IN 1855.
- CORNER RESTORED FROM ORIGINAL EVIDENCE BY Wm. THIEL, USGLO DEPUTY SURVEYOR, IN 1889.
- CORNER RESTORED FROM ORIGINAL EVIDENCE BY J.W. COLE, CO. SURVEYOR, IN 1924 PER VOL. 3, PG. 186.
- CORNER RENEWED BY CHARLES GUILÉ IN 1981 PER M 90-15.
- SEE DCSO SURVEY & CORNER RECORDS FOR PLSS 30-04-048060.

FILED  
Date: 4-15-2021

By: SC

Corner Form and Field Notes:

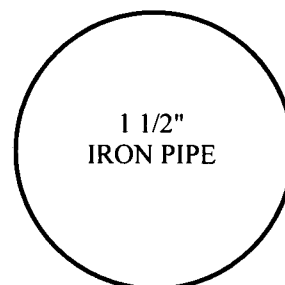
C.S. 67/49-8

DOUGLAS COUNTY SURVEYOR

DATE: FEB. 13, 2017

- Condition Report Only
- Not Found
- Renewed
- Unrecorded
- Surveyed In
- Referenced Out

MONUMENT DETAIL



MONUMENT (CONDITION AND SOURCE):

- FOUND 1 1/2" DIAM. IRON PIPE BY COLE IN 1924, FIRMLY SET, BURIED APPROXIMATELY 14" DEEP IN MUD SOIL NEAR THE N.W. CORNER OF A FARM POND WITH A 1/2" DIAM. x 5 1/2' LONG BENT IRON ROD PROJECTING APPROXIMATELY 2 FEET ABOVE THE GROUND. THE IRON ROD IS REMOVED, STRAIGHTENED AND RESET IN THE CENTER OF THE 1 1/2" DIAM. IRON PIPE.

ACCESSORIES (CONDITION, SOURCE & RECORD):

NO EVIDENCE OF THE 1855, 1889 OR 1924 BEARING TREES REMAIN.

ACCESSORIES BY GUILÉ IN 1981 PER M 90-15:

- A 28" DIAM. SILVER MAPLE BEARS S.34 1/2°E., 150.9 FT. WITH HEALED BLAZE.
- A 3/4" (I.D.) IRON PIPE SET FLUSH WITH THE GROUND BEARS N.0°32'05"W., 366.35' AS PER RECORD.

NEW ACCESSORIES:

- A 5/8" x 30" IRON ROD SET FLUSH WITH THE GROUND WITH A 1 1/2" DIAM DCSO ALUMINUM CAP STAMPED "BO-1 BEARS N.60°E., 40.00 FEET.
- A 5/8" x 30" IRON ROD SET 28" IN THE GROUND WITH A 1 1/2" DIAM DCSO ALUMINUM CAP STAMPED "BO-2 BEARS S.60°W., 90.00 FEET.
- PP&L POWER POLE #107402 BEARS N.37°08'W., 131.9 FEET.

BASIS OF BEARINGS N.0°32'05"W., 366.35' BETWEEN THE 1 1/2" AND 3/4" DIAM. IRON PIPES PER M 90-15.

COMPASS DECLINATION: 15 1/4° E.

AGENCY: DCSO

PARTY CHIEF: S. J. FLAUSE

WITNESSES: M. KOCH

NOTES: ATTACHED

LOCATION & COMMENTS:

ALL BEARING TREES HAVE BT TAGS ATTACHED. ALL NEW BEARING TREES HAVE DOUBLE BLAZED FACES WITH BEARINGS MEASURED TO THE CENTER OF THE TREE AT THE ROOT CROWN AND DISTANCES MEASURED TO THE SIDE AND CENTER OF THE ROOT CROWN UNLESS OTHERWISE NOTED.

SEE FIELD NOTE SKETCH MAP FOR LOCATION.

GEODETIC COORDINATES

LATITUDE: 42°58'29.62291"N.

LONGITUDE: 123°09'08.98319"W.

DATUM: NAD 83(2011) EPOCH 2010.00

SOURCE: BTS SURVEYING INC.

LEICA GS15, ORGN CONTROL NETWORK

FILE PATH: \\dcdnas\TraversePC\Corner Renewal DCSO\2017

REGISTERED  
PROFESSIONAL  
LAND SURVEYOR

OREGON  
JULY 17, 1981  
KRISTIAN O. DEGROOT  
1941

RENEWAL DATE: 12-31-2021

CS 67/49-8 (1)

FEB. 13, 2017

T305, R04W, ESE DLC 48, PLSS 048060

### FOUND MONUMENT:

FROM THE 1924 DCSO SURVEY RENEWAL  
A 1 1/2" I.D. IRON PIPE BURIED APPROX. 14" DEEP  
IN MUD SOIL NE CORNER OF FARM POND.  
IN CENTER OF FOUND I.P. IS A 1/2" DIA. X 5 1/2 FT  
LONG I.R. WHICH IS BENT NW'LY AND PROTRUDES  
2 FT. ABOVE SOIL SURFACE.

### ACCESSORIES FOUND:

NO EVIDENCE REMAINS OF 1855 O.B.T.,  
1889 GLO B.T. OR THE 1924 RENEWAL B.T..

FROM THE 1981 GUILLE SURVEY A SILVER  
MAPLE 19" DIA., NOW A 28" DIA. SILVER MAPLE  
WITH A FULLY HEALED SINGLE BLAZE; BEARS  
S 34 1/2° E, 150 2 FT. DISTANT (AS PER RECORD)

ALSO FROM THE 1981 GUILLE SURVEY  
(FILED AS DCSO MAP M90-15) A 3/4" I.D. IRON  
PIPE SET PLUMB AND FLUSH WITH GROUND JUST  
SOUTH OF CORNER OF FENCES RUNNING N. AND E.;  
BEARS N 0° 32' 05" E, 366 <sup>35</sup> FT. DISTANT  
(AS PER RECORD)

CS 67/49-8 (2)

(2)  
T305, R04W, PLSS 048060

MONUMENT CONDITION: BURIED IRON PIPE IS LEFT AS FOUND. BENT  $1/2$ " DIA. IRON ROD IS REMOVED FROM CENTER OF I.P., STRAIGHTENED, RETURNED TO CENTER OF I.P. AND NOW PROTRUDES 18" ABOVE POND BOTTOM.

NEW ACCESSORIES:

A  $1\frac{1}{2}$ " DIA. DCSO ALUMINUM CAP STAMPED "BO-1" ON A  $5/8$ " DIA. X 30" LONG IRON ROD SET NEAR FLUSH WITH GROUND; BEARS  $N60^{\circ}E, 40^{\circ}00$  FT. DISTANT

AN ALUMINUM CAP/I.R. MONUMENT (AS ABOVE) BUT STAMPED "BO-2" AND SET PROTRUDING 2 INCHES ABOVE GROUND; BEARS  $S60^{\circ}W, 90^{\circ}00$  FT. DISTANT.

A PPL POWER POLE # 107 402 BEARS  $N37^{\circ}08'W, 131^{\circ}9$  FT. DISTANT.

BEARINGS BASED ON MAP M 90-15 MEASUREMENT  $N0^{\circ}32'05"E, 366^{\circ}35$  FT. BETWEEN COR. MONUMENT AND  $3/4$ " IRON PIPE.

CS 67 | 49-8 (3)

(3)  
T305, R04W, PL55 048060

THE CORNER MONUMENT IS IN THE MUDDY  
BOTTOM AND AT THE NE CORNER OF A FARM POND.  
THE FARM POND IS IN A GENTLE DRAW RUNNING NW  
AND THEN NNW. THIS POND IS THE SECOND OF 5 IN  
THE DRAW (COUNTING FROM NORTH TO SOUTH)

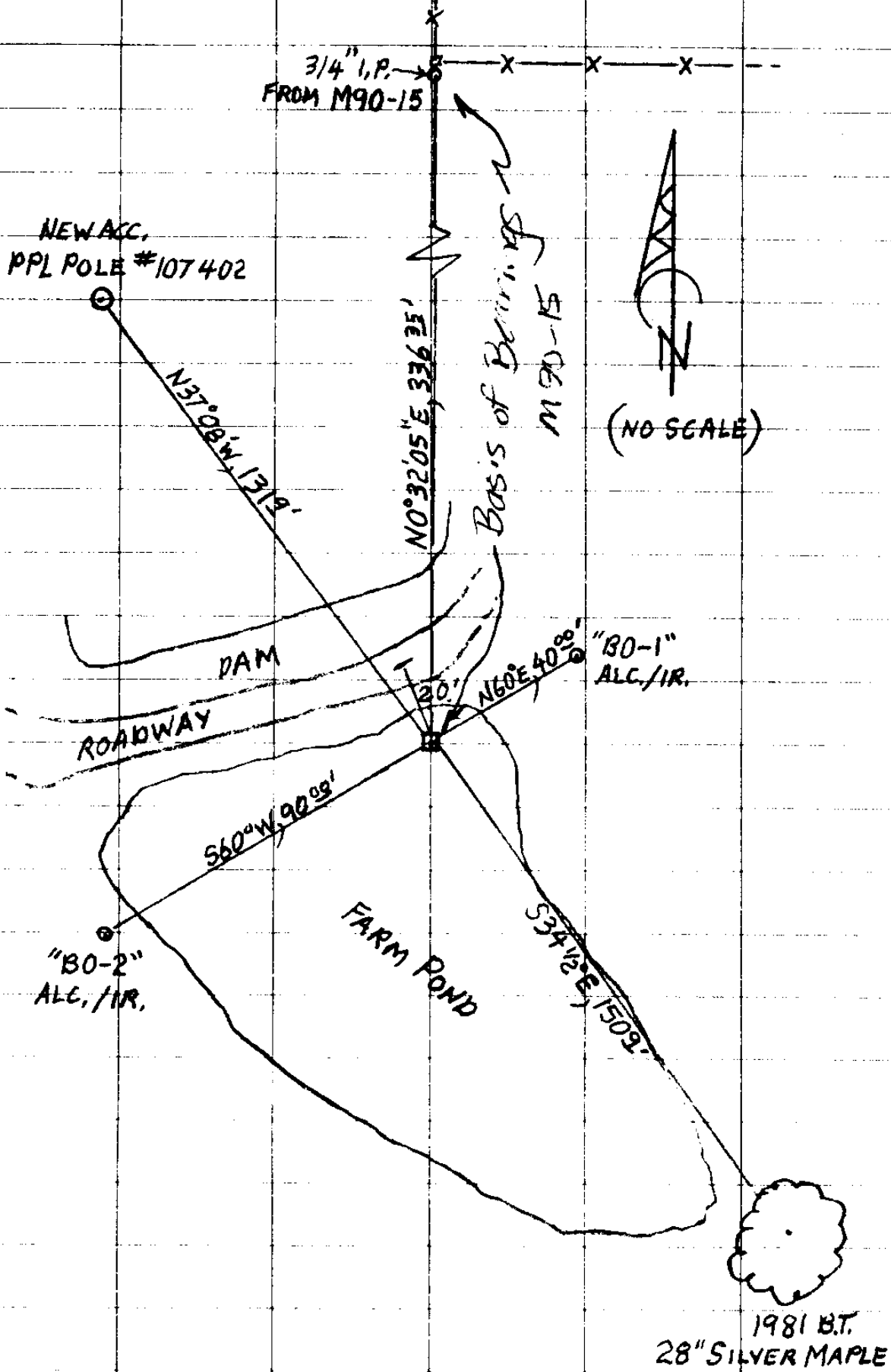
π STEPHEN J. FLAUSE

† MIKE S. KOCH

☞ Stephen John Flause

CS 67/49-8 (4)

(4)  
T30S, R04W, PLSS 048060 (CONT'D)



CS 67/49-8

(5)

TOWNSHIP 30 RANGE 04 POINT IDENTIFIER # 048060

PRIMARY CORNER DESCRIPTION E SE cor Andrew Thomas DLC #48

Alias \_\_\_\_\_ Description in Section 10  
Alias \_\_\_\_\_ Description \_\_\_\_\_  
Alias \_\_\_\_\_ Description \_\_\_\_\_  
Alias \_\_\_\_\_ Description \_\_\_\_\_

2/13/17

Original - GLO survey by Bowman and Burnett, under Contract dated Sept. 1855 (DLC survey Volume, Page 612)

Set a post marked, from which 213 2  
A W.Oak 22" dia., bears N.38°W., 323 lks. FRONT  
IN POND NOT CHKD DEEP WATER N 41° 30' W, 183 L

GLO survey by Wm. Thiel, Deputy Surveyor, under Contract #535, dated Feb. 5, 1889 (DCSO records DLC Volume Page 714-15)

Found a post set by Co. Surveyor in place, the stump of the old bearing tree, to wit, a W.Oak 30" dia. and agreeing in dist. and bearing with the one described in the field notes furnished me, and showing "BT" still stands. I replace the old, partly decayed post by setting a Cedar post 4½ ft. long, 4" sq., 24" in the ground, marked T30S R4W C.48 on NW. face, from which

A Fir 33" dia., bears N.74¼°W., 87 6 133 lks. dist. mkd. T30S R4W C.48 BT. 584° 18' W, 75 2

J.W. Cole - Wit: B.B. Irving, J.R. Chaney, P.L. Beals, J. Sutton - Feb. 6, 1924 - Field Book 52 Pg. 36; Vol. 3 Pg. 186

I renewed this corner from an orig. BT, A 36" Fir bearing scribe marks, N.74¼°W., 133 lks. by setting an Iron pipe 1½" x 40", from which A BNT 1/2 X 5 1/2" IR IN CENTER OF IP, PROT 2'  
NO EVID. A B.Oak 14" dia., bears S.69°45'W., 67.4 ft.  
" A W.Oak 16" dia., bears North, 74.9 ft. N 12° 43' E 45 L FRONT  
Corner was reset from Theil's bearing tree which was alive and bearing scribe marks. Tree badly burned.  
Fence corner 2 ft. South.

NEW BO'S MON. LEE AS FOUND, 1/2" IR STRIGHT ND SET IN CNTR OF IP NOW PROT  
18 INS ABV. GRND.

3/4 IP SET PLMB & FLUSH / GRND SET JUST SOUTH OF COR FNC RUNNING NEE  
BEARS N 0° 32' 05" E, 366 35' (AS PER M 90-15)

5/8" IR / DCSO 1 1/2" ALC "BO-1" N 60° E, 40 00  
" " "BO-2" S 60° W, 90 00

PPL POWER POLE #107 402 N 37° 08' W, 131 2

CS 67/49-8 (u) 1

102472

S 79° 31' 27" W,

FROM 101 S 57° 19' 29" W, 89.617

TO 102 S 60° 27' W, 40

> N 35° 30' 31" W 421

Δ TO IR = S 41° 51' <sup>15</sup> 22" W, 101.930  
802

Δ TO IR = S 76° 13' 50" E 45.890  
801 AZ: 103° 46' 10"

Δ TO PPL 816° 48' 20"

PPL 107 402" N 43° 11' 40" W, 101.78