

**GOVERNMENT CORNER RESTORATION FORM  
DOUGLAS COUNTY SURVEYOR**

TOWNSHIP 28S RANGE 08W SECTION 5,6,7,8

PLSS/GCDB No. 28-08-200600

CORNER DESIGNATION: Section Corner of 5,6,7,8

FILED  
Date: 2/16/2021

By: JC

Corner Form: CS 67/49-1

Field Notes: ↑  
4 Pgs

DOUGLAS COUNTY SURVEYOR

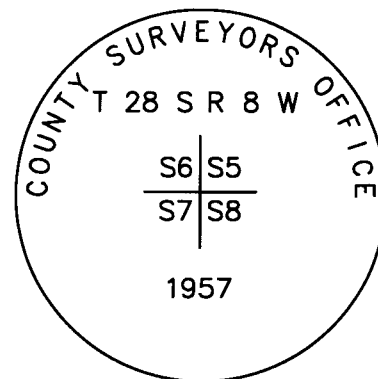
DATE: November, 14, 2018

- Condition Report Only
- Not Found
- Renewed
- Unrecorded
- Surveyed In
- Referenced Out

**CORNER HISTORY, PREVIOUS RENEWALS OR SURVEYS:**

- See DCSO Survey & Corner records for PLSS 28-08-200600.
- The Corner was restored from original evidence by J. Byron, Deputy County Surveyor, in 1957 per C.S. File 49/5:

**MONUMENT DETAIL**



**MONUMENT FOUND (CONDITION AND SOURCE):**

- A 1" i.d. iron pipe by J. Byron in 1957, firmly set, projecting 12" above the ground with a 2 1/2" brass cap marked as shown:

**ACCESSORIES FOUND (CONDITION, SOURCE & RECORD):**

Original bearing trees by George S. Pershin in 1875:

- A 39" x 17' tall rotted Hemlock snag bears N.24°W., 39.6 ft. with scribe marks "T28S R8 S6 BT" visible.
- A root hole bears ( S.42°E., 10.6 ft. per 1975 USBLM Record) with an uprooted 15" Yew alongside and buried under uprooted old growth fir. Unable to measure to actual root hole because of the uprooted fir.

There is no remaining evidence of bearing trees scribed by Byron in 1957 or bearing trees found or scribed by James Jelley in 1975.

**NEW ACCESSORIES (PROCEDURES AND DESCRIPTION):**

- A 14" D. fir bears N.44°E., 11.6 ft. scribed "T28S R8W S5" "CS BT".
- A 17" hemlock bears S.51 1/2°E., 10.7 ft. scribed "X", "BT" (tree has furrowed face, standard blaze not possible).
- A 21" D. fir bears S.82°W., 26.2 ft. scribed "T28S R8W S7 CS" "BT".

**LOCATION & COMMENTS:**

All bearing trees have BT tags attached. All new bearing trees have double blazed faces with bearings measured to the center of the tree at the root crown and distances measured to a 2 1/2" PK nail in the side and center of the root crown

Corner falls on a gentle NNW slope in older fir and hemlock reprod. timber.

**GEODETTIC COORDINATES**

LATITUDE:  
LONGITUDE:  
ELLIPSOID HEIGHT:  
DATUM: NAD 83  
SOURCE:

COMPASS DECLINATION: 15° E.

AGENCY: DCSO  
PARTY CHIEF: S. J. FLAUSE  
WITNESSES: J. LORSUNG  
NOTES: ATTACHED

REGISTERED  
PROFESSIONAL  
LAND SURVEYOR

*Kristian O. Degroot*  
OREGON  
JULY 17, 1981  
KRISTIAN O. DEGROOT  
1941

RENEWAL DATE: 12-31-2021

CS 67/49-1

T285 R8W S 5.6, 7, 8

11/14/18

MONUMENT:

2 1/2 DC50 BC FIRMLY SET PROJ 12"  
MARKED AS PER RECORD

FOUND:

39" X 17" HEMLOCK SWAG, N 24° W, 39<sup>6</sup>  
"T285R856 BT" EXPOSED SCRIBING  
15" YEL (REC S 50° E, 22 LKS) ROOTHOLE  
BURIED UNDER BLOWDOWNS, FALLEN  
- NO OTHER EVIDENCE FOUND -

NEW:

14" D. FIR, N 44° E, 11<sup>6</sup>, "T285R8W55"  
"CSBT"  
17" HEMLOCK, S 51 1/2° E, 10<sup>7</sup> "X", "BT"  
TREE HAS FURROWED FACE STANDARD  
BLAZE NOT POSSIBLE  
21" D. FIR, S 82° W, 26<sup>3</sup>, "T285K8W57CS", "BT"

CS 67/48-1

B

11/14/18

TOWNSHIP 28 RANGE 08 POINT IDENTIFIER # 200600

PRIMARY CORNER DESCRIPTION Sec. Cor. for 5, 6, 7 and 8

Alias _____	Description _____
Alias _____	Description _____
Alias _____	Description _____
Alias _____	Description _____

GLO Survey by George S. Pershin, under Contract #238, Dated, July 13, 1875 - (DCSO records Vol. 14 Page(s) 5828)

Set Hemlock post for cor. to secs. 5, 6, 7 and 8, from which

*NO EVID.* - A Hemlock 6" dia., bears N.35°E., 23 lks. dist.

*ROTTED SNAG 39" x 17"* A Hemlock 36" dia., bears N.24°W., 60 lks. dist. *T28S R8 S6 BT EXPOSED BLZ*

*NO EVID.* - A Hemlock 14" dia., bears S.10°W., 59 lks. dist.

*15"* A Yew 10" dia., bears S.50°E., 22 lks. dist.

*FALLEN ROOTHOLE UNDER LARGE UPROOT CANT CHECK*

Douglas Co. Surveyors Office - James Byron, Deputy - Milo Godfrey; J. Fee, crew - July/Aug. 1957 - C.S. File 49/5

Found - Orig. 36" Hemlock, good scribing, open face. N.24°W., 39.6 ft.

Base of small rotted Hemlock stump N.35°E., 15.2 ft.

*S* 15" Ewewood S.42°E., 14.5 ft., shows old weathered face, no scribing. Found checks for orig. SE. BT dist. only.

Orig. SW. BT not found.

Set Brass cap at cor. mkd: County Surveyors Office

T 28 S R 8 W  
S 6 S 5  
S 7 S 8  
1957

*NO EVID.* New BTs- 18" Hemlock S.13°W., 37.6 ft. scribed S7 T28S R8W CS BT.

*FALLEN PARTLY BURIED OUT OF POS.* 15" Ewewood S.42°E., 14.5 ft. scribed S7 T28S R8W CS BT. *AREA BURIED BY LARGE UPROOT*

*NO EVID.* 6" Hemlock N.2°E., 52.2 ft. scribed S5 CS BT.

BLM Remonumentation by Wayne L. Rogers, Cadastral Surveyor, under Group #350, surveyed Aug. 1973 - (DCSO records Vol. 38 Page(s) 15563)

The Sec. Cor. perpetuated and recorded by DCSO in 1957, monumented with an iron post 1½" dia., firmly set, projecting 12" above ground with brass cap mkd. in 1957

from which the remains of the original bearing trees

A root hole bears S.50°E., 22 lks. dist. with a down Yew alongside, 14" dia., with scribe marks T28S R8 visible on open blaze.

A Hemlock snag 14" dia., bears N.24°W., 60 lks dist., with scribe marks T28S R8W S6 BT visible on open blaze.

and new bearing trees

A Yew 22" dia., bears N.89°E., 139 lks. dist. mkd. T28S R8W S5 BT.

(Cont. Next Page)

CS 67/49-1

11/14/18

TOWNSHIP 28 RANGE 08 POINT IDENTIFIER # 200600

PRIMARY CORNER DESCRIPTION Sec. Cor. for 5, 6, 7 and 8

Alias _____	Description _____
Alias _____	Description _____
Alias _____	Description _____
Alias _____	Description _____

A Hemlock 12" dia., bears N.31½°W., 152 lks. dist. mkd. T28S R8W S6 BT.

BLM resurvey by James E. Jelley, Cadastral Surveyor - under Group #863, surveyed May/July 1975 - (DCSO records Vol. 38 Page(s) 15592-93)

The Sec. Cor. perpetuated and recorded by Byron in 1957, monumented with an iron post 1½" dia., firmly set, projecting 10" above ground with brass cap mkd. in 1957 from which the remains of the original bearing trees;

A root hole bears S.42°E., 16 lks. dist., with a down Yew alongside 12" dia., no marks visible on decayed blaze. Rescribed by Byron with scribe marks T28S R8W S8 CS visible on open blaze. (Rec. S.50°E., 22 lks.)

A Hemlock snag 48" dia., bears N.24°W., 60 lks. dist. with scribe marks T28S R8W S6 BT visible on open blaze. and the remains of bearing trees mkd. by Byron

A root hole bears N.2°E., 79 lks. dist., with a down Hemlock alongside 6" dia., with scribe marks S5 CS visible on open blaze.

A root hole bears S.42°E., 16 lks. dist. with a down Hemlock alongside 12" dia., with scribe marks T28S R8W S CS visible on open blaze.

A root hole bears S.13°W., 53 lks. dist., with a down Hemlock alongside 17" dia., with scribe marks T28S R8W S7 CS BT visible on open blaze.

and bearing trees not of record  
A Yew 20" dia., bears N.89°E., 137 lks. dist. with scribe marks T28S R8W S5 BT visible on open blaze.

A Hemlock 15" dia., bears N.31½°W., 148 lks. dist., with scribe marks T28S R8W S6 BT visible on open blaze. and new bearing trees

A Yew 10" dia., bears S.9 3/4°E., 245 lks. dist. mkd. T28S R8W S8 BT.

A Hemlock 29" dia., bears S.55 3/4°W., 464 lks. dist. mkd. T28S R8W S7 BT.

NEW BTs

14" D. FIR " T28S R8W S5 " "CS BT" <sup>ON D.B.</sup> N44°E, 116 FT

17" HEMLOCK "X" "BT" ON HIGH-LOW BLAZE S 51 1/2°E, 107  
TREE HAS FURROWED FACE  
STANDARD BLZ NOT POSSIBLE

21" D. FIR " T28S R8W S7 CS " "BT" ON D.B. S 82°W, 262

CORNER IS ON GENTLE NNW SLOPE IN OLDER FIR, HEMLOCK REPROD.

464  
2784  
2784  
30624

NO EVID.  
NO EVID.  
NO EVID.  
NO EVID.

CS 67/99-1  
D