

**GOVERNMENT CORNER RESTORATION FORM  
DOUGLAS COUNTY SURVEYOR**

TOWNSHIP 24S RANGE 04W SECTIONS 25,26,35,36 PLSS/GCDB No. 24-04-600200

CORNER DESIGNATION:  $\frac{S26|S25}{S35|S36}$

FILED  
Date: 1-27-2021  
By: SC  
Corner Form: CS67/48-12  
Field Notes: 8 Pgs  
DOUGLAS COUNTY SURVEYOR

**CORNER HISTORY, PREVIOUS RENEWALS OR SURVEYS:**

- SEE DCSO SURVEY & CORNER RECORDS FOR PLSS 24-04-600200
- ORIGINAL USGLO SURVEY BY GORDON & GARDNER IN 1855.
- RESTORED IN ORIGINAL POSITION BY M.E. GODFREY IN 1963 PER CS 53/9 .
- CORNER FOUND & HELD BY C.A. WHITE & N.J. MCDONALD PER A 1963 USBLM DEPENDENT RESURVEY.
- CORNER FOUND & HELD BY W.L. ROGERS & B.W. PETERSON PER A 1986 USBLM DEPENDENT RESURVEY.
- CORNER FOUND & HELD BY L.W. BARBER IN 1974 PER M 97-62.

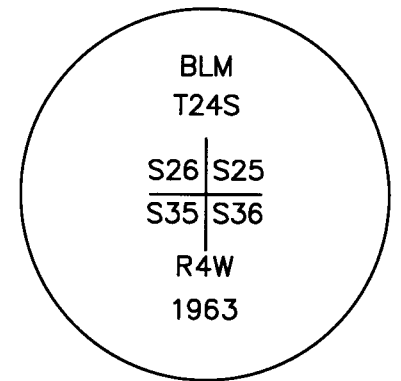
DATE: MARCH 15, 2016

Condition Report Only  
 Not Found  
 Renewed  
 Unrecorded  
 Surveyed In  
 Referenced Out

**MONUMENT DETAIL**

**MONUMENT FOUND (CONDITION AND SOURCE):**

- A 1 1/2" DIA. STEEL AXLE FOUND & ACCCEPTED BY M.E. GODFREY, DEPUTY COUNTY SURVEYOR, IN 1963 PER C.S. 53/9, FIRMLY SET, PROJECTING 8" ABOVE THE GROUND AND LEANING 6" SOUTHWESTERLY WITH A 6" DIA. STEEL FLANGE MARKED AS NOTED:
- THE AXLE IS MOVED TO A PLUMB POSITION & NOW PROJECTS 7" ABOVE THE GROUND.



**ACCESSORIES FOUND (CONDITION, SOURCE & RECORD):**

**ORIGINAL BEARING TREES BY GORDON & GARDNER IN 1855:**

- A ROOT HOLE BEARS N.18 1/4°E., 75.2 FT. WITH 30"DIA.FALLEN AND ROTTED W. OAK ALONGSIDE (1986 USBLM REC. 111 LKS.)
- A ROOT HOLE BEARS S.59°W., 77.2 FT. (1986 USBLM S.59 1/2°W., 118 LKS.)

**AND BEARING TREES BY M.E. GODFREY, DEPUTY COUNTY SURVEYOR, IN 1963:**

- A 19" DIA. W.OAK BEING THE MOST SOUTHERLY TRUNK OF A QUADRUPLE W. OAK CLUMP BEARS N.68 3/4°E., 21.0 FT. WITH A HEALED DOUBLE BLAZE (1986 USBLM REC. 32 LKS.)
- A 16" DIA. W. OAK BEARS S.64 1/4°E., 24.5 FT. WITH A HEALED DOUBLE BLAZE. (1986 USBLM REC. 37 LKS.)
- A 17" DIA. W. OAK BEARS S.23 1/2°W., 41.4 FT. WITH A HEALED DOUBLE BLAZE. (1986 USBLM REC. 63 LKS.)
- A ROOT HOLE BEARS N. 50 3/4°W., 32.0 FT. WITH A 12" DIA. FALLEN & ROTTED D.FIR ALONGSIDE. (1986 USBLM REC. 48 LKS.)

**MONUMENT SET (PROCEDURES AND DESCRIPTION): NONE**

**NEW BEARING TREE:**

- A 16" DIA. I. CEDAR BEARS N.47°W., 11.8 FT. SCRIBED "T24S R4W S26 CS BT".

**LOCATION & COMMENTS:**

ALL BEARING TREES HAVE BT TAGS ATTACHED. ALL NEW BEARING TREES HAVE DOUBLE BLAZED FACES WITH BEARINGS MEASURED TO THE CENTER OF THE TREE AT THE ROOT CROWN AND DISTANCES MEASURED TO THE SIDE AND CENTER OF THE ROOT CROWN UNLESS OTHERWISE NOTED.

THE CORNER FALLS ON FLAT TO ROLLING GROUND IN AN MIXED OAK, FIR & CEDAR WOODLAND NEAR THE EAST EDGE OF A NORTH-SOUTH RUNNING PASTURE AND APPROXIMATELY 150 FT. EAST OF A GRAVEL ROAD.

**GEODETIC COORDINATES**

LATITUDE:  
LONGITUDE:  
ELLIPSOID HEIGHT:  
DATUM: NAD 83  
SOURCE:

COMPASS DECLINATION: 15° E.  
AGENCY:DCSO  
PARTY CHIEF: S. J. FLAUSE  
WITNESSES: M. KOCH  
NOTES: ATTACHED

REGISTERED  
PROFESSIONAL  
LAND SURVEYOR

OREGON  
JULY 17, 1981  
KRISTIAN O. DEGROOT  
1941

RENEWAL DATE: 12-31-2021

CS 67 | 48-12

MARCH 15, 2016

T24S, R04W, SW25, PLSS 600200

MONUMENT FOUND:

FROM THE 1963 RCSD RENEWAL A  
MONUMENT OF UNKNOWN ORIGIN; A 6" DIA.  
STEEL FLANGE ON A 1 1/2" DIA. STEEL AXLE IS  
LEANING APPROX. 0 5/8 FT. SW'LY FROM PLUMB  
AND PROTRUDING 8" ABOVE GROUND. THE 6"  
FLANGE HAS STAMPED MARKINGS AS FOLLOW:

" BLM "

T24S

S26	S25
S35	S36

R 4 W

1963

THE FOUND ACCESSORIES WERE MEASURED  
FROM THE MONUMENTS PLUMB POSITION. AFTER  
VERIFYING MEASUREMENTS TO ACCESSORIES AG-  
REE WITH RECORD, THE ABOVE FOUND MONUMENT  
IS RETURNED TO ITS PLUMB CONDITION. THE MON.  
NOW PROTRUDES 7" ABOVE GROUND.

CS 67/48-2

(2)

(2)  
T245, R04W, PLSS 600200 (CONT'D)

### ACCESSORIES FOUND:

EVIDENCE OF 3 O.B.T.'S REMAINS.

A W. OAK, 24" DIA. NOW A 30" DIA. FALLEN AND HALF  
ROTTEN AWAY W. OAK WITH NO BLAZE EVID. RE-  
MAINING, THE ROOTHOLE OF THIS FALLEN TREE  
BEARS  $N18\frac{1}{4}^{\circ}E$ , 75 $\frac{1}{2}$  FT. DISTANT (BEARING  
AGREES WITH BLM REC., DISTANCE AGREES WITH  
ORIG. REC.).

A 15" FIR, NOW A DISTINCT ROOTHOLE; BEARS  
 $S59^{\circ}W$ , 77 $\frac{1}{2}$  FT. DISTANT (AS PER ORIG. REC.)

A W. OAK, 12" DIA., NOW A FALLEN AND ROTTED  
15" DIA. W. OAK WITH NO BLAZE EVID. REMAIN-  
ING. THE ROOTHOLE OF THIS FALLEN TREE BEARS  
 $N5\frac{1}{4}^{\circ}W$ , 45 $\frac{1}{2}$  FT. DISTANT (BEARING AGREES  
WITH BLM REC., DISTANCE AGREES WITH  
ORIG. REC.).

SE BEARING TREES POSITION NOW FALLS IN  
OLD SKID-ROAD, NO EVIDENCE REMAINING.

EVIDENCE OF THE FOUR 1963 DCSD RENEWAL B.T.'S.

A 14" W. OAK, NOW A QUADRUPLE TRUNK W. OAK,  
THE MOST S'LY TRUNK OF WHICH IS 19" IN DIA. AND  
HAS A FULLY HEALED DOUBLE BLAZE. THE BASE

C S 6148-12

(3)

(3)

T24S, R04W, PLSS 600200 (CONT'D)

OF THE 19" DIA. BLAZED TRUNK BEARS  $N68^{\frac{3}{4}}E$ , 21<sup>0</sup> FT. DISTANT (BEARING AGREES WITH BLM REC., DISTANCE AGREES WITH ORIG. RECORD), THE CENTER OF THE ROOT CROWN OF THE NOW GROWN TOGETHER QUADRUPLE TRUNK BEARS  $N66^{\circ}E$ , 24<sup>0</sup> FT DISTANT, A 13" W. OAK NOW A 16" DIA. W. OAK WITH A FULLY HEALED DOUBLE BLAZE; BEARS  $S64^{\frac{1}{4}}E$ , 24<sup>5</sup> FT. DISTANT (BEARING AGREES WITH BLM REC., DISTANCE AGREES WITH DCSD REC.).

A 12" W. OAK NOW A 17" DIA. W. OAK WITH A FULLY HEALED DOUBLE BLAZE; BEARS  $S23^{\frac{1}{2}}W$ , 41<sup>4</sup> FT. DISTANT (BEARING AGREES WITH BLM REC., DISTANCE AGREES WITH DCSD REC.).

A 7" D. FIR, NOW A FALLEN ON FACE AND ROTTED 12" DIA. D. FIR, THE ROOTHOLE OF WHICH BEARS  $N50^{\frac{3}{4}}W$ , 32<sup>0</sup> FT. DISTANT (BEARING AGREES WITH BLM REC., DISTANCE AGREES WITH DCSD REC.).

#### NEW ACCESSORIES:

A 16" DIA. T. CEDAR SCRIBED "T24S R4WS 26" "CSBT" ON A DOUBLE BLAZE; BEARS  $N47^{\circ}W$ , 11<sup>8</sup> FT. DISTANT.

DECLINATION 15° EAST CS 67/48-12  
(4)

(4)

THE CORNER MONUMENT IS ON FLAT TO  
ROLLING GROUND IN AN OAK WOODLAND  
WITH SOME FIR AND CEDAR JUST EAST OF  
EAST EDGE OF NORTH-SOUTH RUNNING  
PASTURE,

T S.J. FLAUSE

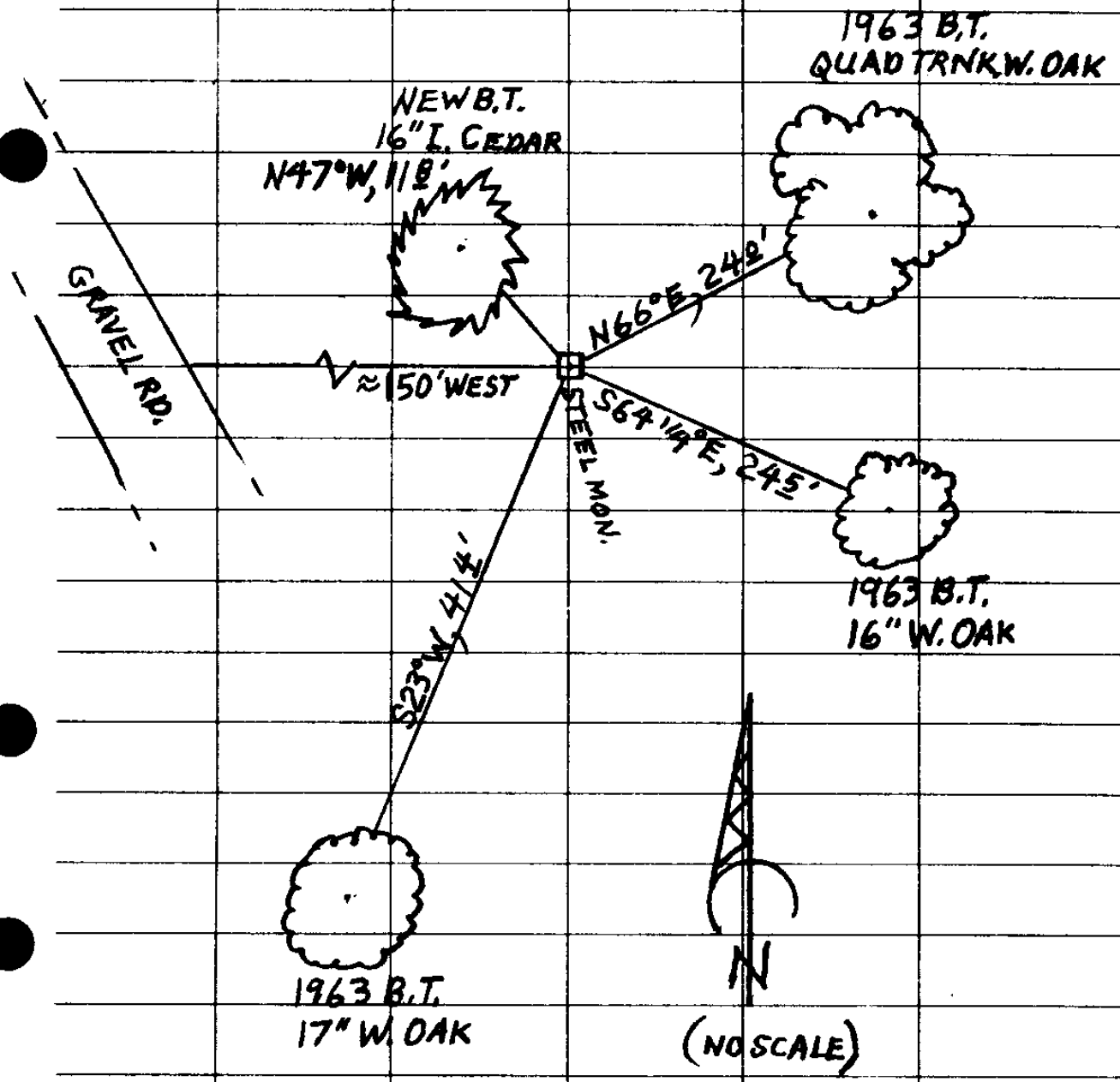
† M.S. KOCH

M Stephen John Flause

CS 67/48-12 (5).

(5)

SKETCH SHOWS LIVE TREES ONLY



CS 67 (48-12) (6)

3/15/16

1855

15" FALLEN ROTTED  
12" W OAK  
30" 1/2 DIAM ROTTEN  
24"

BLM ✓  
(N 5 1/4° W) ✓  
N 7° W, 45 54 NO SCRUB  
(BLM 18 1/4) ✓  
N 17° E, 75 24

15" FIR

559° W, 77 22 ✓ ROOT HOLE

10" BOAK

S 50° E, 146 52 SKID RD

LEANING SW 0 5' → NOW PLUMB  
6 IN PROT 8"

1963

FIND FIR STUB 559° W, 77.2

OLD OAK SCRUBS N 7° W, 45.5

OLD OAK FACE DOWN N 17° E, 75.2

NO TRACE SE BT

NEW BT'S

MOST SLY SCRUB. TANK 19" BLM 68 3/4 ✓ FHO B CRL 4 TRACK

14" W. OAK N 67° E 21 0 W N 66° E, 24 0

16" 13" " BLM 64 1/4 ✓ 566° E 24 5 ✓ FHO B

17" 12" " BLM 33 1/2 ✓ 523° W, 41 4 ✓ FHO B

12" 7" D. FIR N 52° W, 32 0 ✓

FALLEN ON FACE  
ROTTED

BLM 50 3/4 ✓ TO ROOT HOLE

NEW BT

16" CED. " 225 R 4 W 525 " CSOT " N 47° W, 118'

CS. 47/48-12. (7)

13464

18269

1963 BLM

OBT'S

OAK N  $18\frac{1}{4}^{\circ}$  E, 73 26

50" STMP FIR S  $59\frac{1}{2}^{\circ}$  W, 77 88 ROOT HOLE

FACE DOWN OAK N  $5\frac{1}{4}$  W, 45 54

NEW BT'S

OAK N  $68\frac{3}{4}^{\circ}$  E, 21 12

" S  $64\frac{1}{4}^{\circ}$  E, 24 42

" S  $23\frac{1}{2}^{\circ}$  W, 41 58

FIR N  $50\frac{3}{4}^{\circ}$  W, 31 68

CS 67/98-12 (8)