

GOVERNMENT CORNER RESTORATION FORM  
DOUGLAS COUNTY SURVEYOR

FILED  
Date: 1/27/2021  
By: SC  
Corner Form and Field Notes:  
C.S. 67/48-8  
3 Pgs  
DOUGLAS COUNTY SURVEYOR

TOWNSHIP 25S RANGE 04W DLC No. 39 PLSS/GCDB No. 25-04-039060  
CORNER DESIGNATION: SE CORNER NATHANIEL MARKHAM DLC No. 39

CORNER HISTORY, PREVIOUS RENEWALS OR SURVEYS:

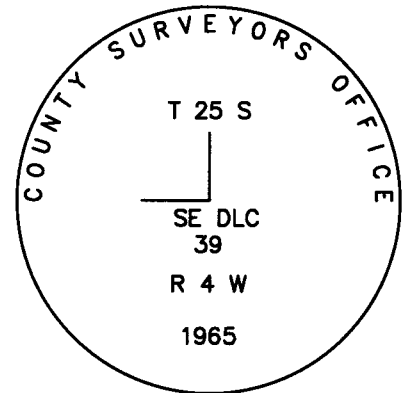
- SEE DCSO SURVEY & CORNER RECORDS FOR PLSS 039060
- THE ORIGINAL CORNER WAS ESTABLISHED BY D. HATHORN IN 1856.
- THE CORNER WAS RESTORED FROM ORIGINAL EVIDENCE BY V. TRACY, DOUGLAS CO. SURVEYOR'S OFFICE, IN 1965 PER C.S. FILE 53/47-36.

DATE: JAN. 6, 2016  
Condition Report Only  
Not Found  
X Renewed  
Unrecorded  
Surveyed In  
Referenced Out

MONUMENT DETAIL

MONUMENT FOUND (CONDITION AND SOURCE):

A 1 1/4" IRON PIPE BY V. TRACY IN 1965, FIRMLY SET, PROJECTING 10" ABOVE THE GROUND WITH A 2 1/2" BRASS CAP MARKED:



ACCESSORIES FOUND (CONDITION, SOURCE & RECORD):

ORIGINAL BEARING TREES BY D. HATHORN IN 1856:

- A ROTTED 33" DIAM. x 48" HIGH FIR STUMP BEARS N.44°W., 9.3 FT. WITH NO SCRIBED MARKS VISIBLE ON A ROTTED FACE (REC. N.40°W. 12 LKS. TO FACE).
- A 24" DIAM. x 24" HIGH FIR STUMP BEARS N.70°E., 17.9 FT. WITH A BT NOTCH ON A ROTTED FACE (REC. 26 LKS.)

BEARING TREES BY V. TRACY IN 1965 PER C.S. FILE 53/47-36:

- A 29" DIAM. CEDAR BEARS N. 52°E., 40.8 FT. WITH A HEALED DOUBLE BLAZE.
- A 40" DIAM. CEDAR BEARS S. 62 1/2° E., 31.5 FT. WITH A HEALED DOUBLE BLAZE (REC. S.65°E.)

MONUMENT SET (PROCEDURES AND DESCRIPTION):

NEW BEARING TREES:

- A 9" DIAM. D. FIR BEARS S. 46 1/2°W., 10.8 FT. SCRIBED "SE DLC 39 " "CS BT".
- A 5" DIAM. D.FIR BEARS N.66°W., 5.8 FT. SCRIBED "X" "CSBT".

COMPASS DECLINATION: 15 1/4° E.

AGENCY:DCSO

PARTY CHIEF: S. J. FLAUSE

WITNESSES: M.KOCH

NOTES: ATTACHED

GEODETTIC COORDINATES

LATITUDE:

LONGITUDE:

DATUM: NAD 83(2011)

EPOCH 2010.00

ELLIPSOID: GRS 1980

SOURCE: GeoXT6000

FILE PATH: \\dcnas\Surveyor\Surshared\TraversePC\Corner Renewal DCSO\2016

LOCATION & COMMENTS:

ALL BEARING TREES HAVE BT TAGS ATTACHED. ALL NEW BEARING TREES HAVE DOUBLE BLAZED FACES WITH BEARINGS MEASURED TO THE CENTER OF THE TREE AT THE ROOT CROWN AND DISTANCES MEASURED TO THE SIDE AND CENTER OF THE ROOT CROWN.

THE CORNER FALLS ON A GENTLE SOUTH SLOPE APPROXIMATELY 150 FT. SOUTH OF A RIDGE TOP IN OLD REPROD. UNIT OF MIXED FIR, CEDAR, MADRONE & OAK..

SURVEYOR'S SEAL

REGISTERED  
PROFESSIONAL  
LAND SURVEYOR

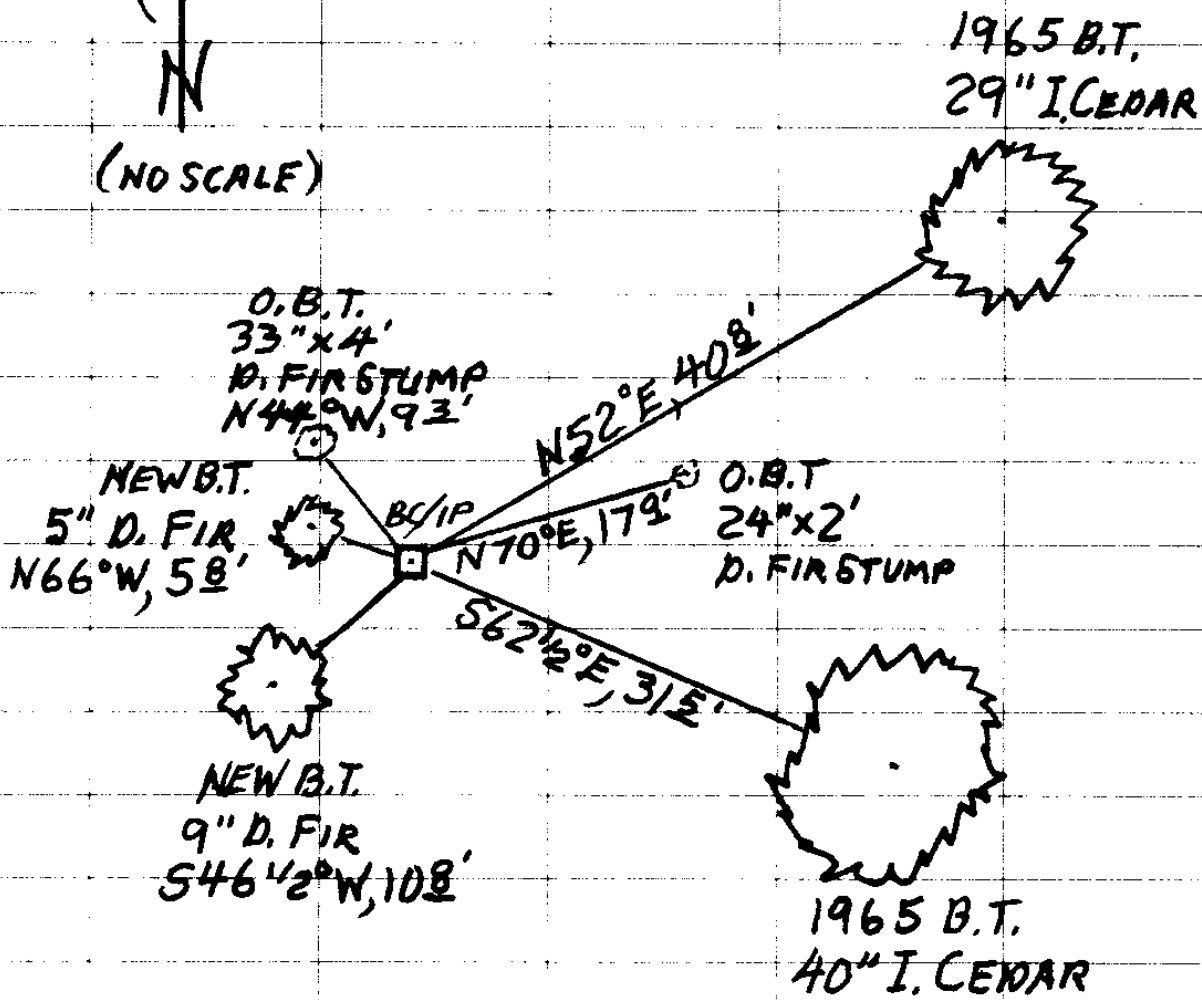
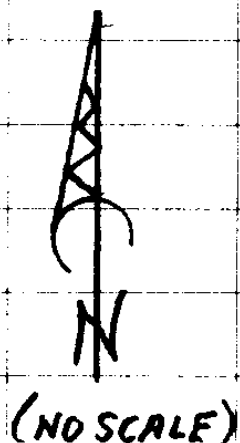
OREGON  
JULY 17, 1981  
KRISTIAN O. DEGROOT  
1941

RENEWAL DATE: 12-31-2021

CS 67/48-8

T25S, R04W, 039060

JAN. 6, 2016



✓ STEPHEN JOHN FLAUSE

✱ Stephen John Flause

WIT. M. S. KOCH

1/27/2021

CS 67/48-8

(2)

1/06/16

TOWNSHIP 25 RANGE 04 POINT IDENTIFIER # 039060

PRIMARY CORNER DESCRIPTION SE Cor. Markham DLC #39

Alias _____	Description _____
Alias _____	Description _____
Alias _____	Description _____
Alias _____	Description _____

44° CRC

Original - Dennis Hathorn, Contract dated Sept. 1856

ROTTEN 33" x 4" STMP

Set post S E cor. claim 39, from which  
A Fir 30" dia. bears N. 40° W., 12 lks.  
24" x 2" STMP A Fir 15" dia. bears N. 70° E., 26 lks

FACE MEAS. 1/2, CRC DIST 93 NO SCRIB RMNS  
FACE, CRC 179 NOTCH NO BT SEEN

Doug. Co. Surveyors Office - Vernon Tracy; Mike Darby; Jack Barnett - January 1965 - C.S. File 53/47

Found - Stumps of both original BTs as follows:  
30" now 42" Fir stump N. 40° W., 7.9 ft. Open and found scribe.  
15" now 21" Fir stump N. 70° E., 17.2 ft. Open and find "BT".

Set brass cap at cor. mkd: County Surveyors Office, 1965

New BTs - 29" 13" Cedar N. 52° E., 40.8 ft. mkd: SE DLC 39 CS BT. FHOB  
16" Cedar S. 65° E., 31.5 ft. mkd: SE DLC 39 CS BT. FHOB  
40" 62 1/2"

Found OK by K. Hoffine, Feb. 2000 - M134-31

COR GENTLE SOUTH TIP 2156' SOUTH WIDGE TOP  
OLD REPROD MIX'D FIR CED MAD. DAK

2 1/2" BL PROT 10"  
COUNTY SURVEYORS OFFICE  
T 25 S  
SE DLC  
39  
R 4 W  
1965

NEW BTs

90' D. FIR "SE DLC 39" CS BT, 10 8  
546 1/2' W

5 D. FIR "X" CS BT N 66° W, 5 8

CS 67/48-8

(3)