

GOVERNMENT CORNER RESTORATION FORM
DOUGLAS COUNTY SURVEYOR

TOWNSHIP 24S RANGE 04W SECTION 31 & 32 PLSS/GCDB No. 24-04-200140

CORNER DESIGNATION: 1/4
S31|S32

FILED
Date: 1-27-2021
By: JC
Corner Form: CS 67/48-4
Field Notes: (5 pgs)
DOUGLAS COUNTY SURVEYOR

CORNER HISTORY, PREVIOUS RENEWALS OR SURVEYS:

- SEE DCSO SURVEY & CORNER RECORDS FOR PLSS 200140.
- ORIGINAL CORNER ESTABLISHED BY GORDON & GARDNER IN 1855.
- RESTORED FROM ORIGINAL EVIDENCE BY F.C. FREAR, DEPUTY COUNTY SURVEYOR, IN 1919 PER FB 43, PG. 53
- RENEWED BY M.E. GODFREY, DEPUTY COUNTY SURVEYOR, IN 1963 PER CS FILE 53/9-84.
- RENEWED BY R. W. SMITH, DEPUTY COUNTY SURVEYOR, IN 2002 PER CS FILE 66/32-5.

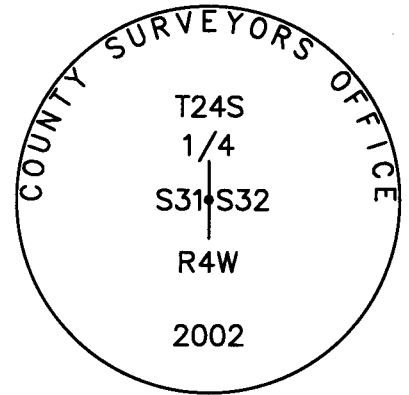
DATE: JULY 7, 2015
 Condition Report Only
 Not Found
 Renewed
 Unrecorded
 Surveyed In
 Referenced Out

MONUMENT FOUND (CONDITION AND SOURCE):

1" (I.D.) IRON PIPE BY SMITH IN 2002 PER CS FILE 66/32-5, FIRMLY SET, PROJECTING 6" ABOVE GROUND LEVEL, WITH A 2 1/2" BRASS CAP MARKED:

A 4 1/2' TALL STEEL FENCE POST IS SET ALONGSIDE & BEARS N. 49 3/4°E., 0.7 FT

MONUMENT DETAIL



ACCESSORIES FOUND (CONDITION, SOURCE & RECORD):

BEARING TREES BY GODFREY IN 1963:

- A 26" DIAM. ASH BEARS N.81°E., 144.8 FT. WITH SCRIBE MARKS NO LONGER VISIBLE ON A ROTTED FACE. (2002 REC. S.81°W.)

BEARING TREES BY SMITH IN 2002:

- THE SOUTHERLY TRUNK OF A 15" DIAM. W. OAK BEARS S.72 1/4°W., 90.5 FT. WITH A HEALED DOUBLE BLAZE. (REC. S°71 1/2°W.)
- A 15" DIAM. x 48" TALL FIR STUMP BEARS S. 1 1/2°E., 100.3 FT. WITH A HEALED DOUBLE BLAZE.
- A 19" DIAM. W. OAK BEARS N.8 3/4°W., 260.5 FT. WITH A HEALED DOUBLE BLAZE.

MONUMENT SET (PROCEDURES AND DESCRIPTION):

NONE

NEW ACCESSORIES:

NEW BEARING TREE:

- THE WESTERLY 11" DIAM. TRUNK OF A DOUBLE TRUNK APPLE TREE BEARS S.58°E., 306.0 FT. THIS TREE IS NOT SCRIBED. A 2" LONG NAIL WITH A 2" DIAM. STEEL WASHER IS DRIVEN IN THE NORTHERLY SIDE & CENTER OF THE ROOT CROWN.

COMPASS DECLINATION: 15 1/4° E.

AGENCY:DCSO

PARTY CHIEF: S. J. FLAUSE

WITNESSES: M. KOCH

NOTES: ATTACHED

LOCATION & COMMENTS:

ALL BEARING TREES HAVE BT TAGS ATTACHED. NEW BEARING TREES HAVE DOUBLE BLAZED FACES WITH BEARINGS MEASURED TO THE CENTER OF THE TREE AT THE ROOT CROWN AND DISTANCES MEASURED TO A NAIL IN THE SIDE AND CENTER OF THE ROOT CROWN UNLESS OTHERWISE NOTED.

THE CORNER FALLS NEAR THE SOUTHERLY EDGE OF A LARGE HAY FIELD, 70 FT. NORTH OF A SMALL STREAM COURSE SOUTHEASTERLY.

GEODETIC COORDINATES

LATITUDE:

LONGITUDE:

ELLIPSOID HEIGHT:

DATUM: NAD 83

SOURCE:

FILE PATH: \\dcnas\Surveyor\Surshared\TraversePC\Corner Renewal DCSO\2015 (1)

CS 67/48-4

REGISTERED
PROFESSIONAL
LAND SURVEYOR

Kristian O. Degroot

OREGON
JULY 17, 1981
KRISTIAN O. DEGROOT
1941

RENEWAL DATE: 12-31-2021

GOVERNMENT CORNER RESTORATION FORM

FILED

TOWNSHIP 24S RANGE 04W SEC. 31 PLSS # 200140

Date: 1/27/2021 By: SC
This survey consists of:

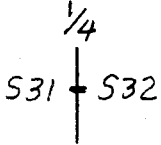
DOUGLAS COUNTY OREGON

DATE JULY 7, 2015

Map: _____

Corner Designation

Narrative: _____
Corner Rpt: CS 67/48-4



DOUGLAS COUNTY SURVEYOR

Previous Renewals 1917, 1903, 2002
Monument(s) Found: _____ (Condition and Source)

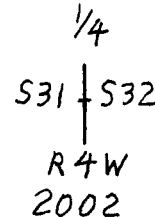
- _____ Condition Report
- _____ Not Found
- Renewed
- _____ Unrecorded
- _____ Surveyed In
- _____ Referenced Out

BRASS CAP MONUMENT FOUND AS DESCRIBED IN 2002 WITH THE EXCEPTION OF DETAIL NOTED AT RIGHT, AND MONUMENT NOW PROTRUS 6 INCHES ABOVE GROUND.

(MARKINGS AND NEARBY FENCE POST DIFFERENT THAN PREV. DESCRD.)

MONUMENT DETAIL

COUNTY SURVEYORS OFFICE
T24S



A 4 1/2 FOOT TALL STEEL FENCE POST BEARS N49 3/4° E 02 FEET DISTANT

Accessories Found

ALL ACCESSORIES AS DESCRIBED IN 2002 UNLESS NOTED AS OTHERWISE (BELOW).

NE ASH NOW 26 INCHES IN DIAMETER, FACE NOW ROTTED AND SCRIBING VISIBLE; BEARS N81°E, 144.8 FEET DISTANT (2002 RECORD NOTED BEARING FROM TREE TO FOUND CORNER EVIDENCE)
SW W. OAK NOW 15 INCH DIAM ON SCRIBED SOUTHERLY TRUNK WHICH NOW HAS A FULLY HEALED DOUBLE BLAZE. THE C.R.C. OF THIS TREE BEARS S72 1/4°W, 90.5 FEET DISTANT (RECORD S71 1/2°W, 90.5 FEET).

THE SE D. FIR IS NOW A 15 INCH DIAM. 4 FOOT TALL FIR STUMP WITH A FULLY HEALED DOUBLE BLAZE; BEARS S1 1/2°E, 100.2 FEET DISTANT (AS PER RECORD).

NW W. OAK NOW 19 INCH DIAM. WITH A FULLY HEALED DOUBLE BLAZE; BEARS N08 3/4°W, 260.5 FEET DISTANT (AS PER RECORD).

C.S. File 67/48-4

RENEWAL

Monument Set (Procedure and Description)

MONUMENT DETAIL

N/A N/A

New Accessories

A DOUBLE TRUNK APPLE TREE WITH ITS LARGEST (MOST WESTERLY) TRUNK 11 INCHES IN DIAM; BEARS S58°E, 306.2 FEET DISTANT, ONLY APPLE IN AREA. IT IS NOT BLAZED OR SCRIBED BECAUSE OF POOR HEALING CHARACTERISTIC. A 2 INCH LONG STEEL NAIL, HOLDING A 2 INCH DIAM. STEEL WASHER IS DRIVEN IN THE BASE OF AND AT THE NORTHERLY SIDE CENTER OF THE APPLE TREE TRUNK.

Sketch of Monument, Accessories, and General Area

Location & Comments

SEE SKETCH IN C.S. 66/32-5

CORNER MONUMENT IS IN LARGE HAYFIELD NEAR SOUTHERLY EDGE, 70 FEET NORTH OF SMALL STREAM COURSEING SELV.

Comp. Decline. 15 1/4° E
 Agency DCSO
 Party Chief STEPHEN JOHN FLAISE
 Note keeper Stephen John Flaese
 Witnesses MIKE S. KOCH

Surveyor's Seal

(3) CS 67/45-4

TOWNSHIP 24 RANGE 04 POINT IDENTIFIER # 200140

PRIMARY CORNER DESCRIPTION 1/4 Cor. Secs. 31 & 32

7/7/15

Alias _____ Description _____
Alias _____ Description _____
Alias _____ Description _____
Alias _____ Description _____

Original - Gordon & Gardner, Contract #52 dated Feb. 1855
(DCSO records Vol. 7 Page(s) 3047)

Set 1/4 sec. post from which
A W.Oak, 10" dia., bears S.24°W., 328 lks.
A W.Oak, 18" dia., bears S.86°E., 960 lks.

Douglas Co. Surveyors Office - F.C. Frear, Dep. Co. Surveyor
- Witness: Alva Manning and Harrison Manning - Feb. 1917 -
FB 43 Pg 53

Renew from old BT
Set in a 10"x10"x18" sandstone from which
A W.Oak, bears S.25 1/4°W., 3.28 chains.
A W.Oak, bears N.84°E., 9.74 chains.

Douglas Co. Surveyors Office -Milo E. Godfrey, Deputy Co.
Surveyor - Vernon Tracy - Mike Stone - May 1963 - C.S. File
53/9

Found - Rock set by Frear, "X" cut in top. 1917
25" W.Oak, S.24°W., 216.5', show good scar. Appears
to have been opened previously, did not open.
No trace of SE BT.

DID NOT SET BRASS CAP

New BTs- 21" W.Oak, S.55°W., 114.0', mkd: 1/4 S31 CS BT.
14" Ash N.81°E., 144.8', mkd: 1/4 S32 CS BT.

Note - Corner lies in cultivated field approx. 140' north
of small stream flowing Southeast.

Fd. stone & BTs - Wm. Barnes - 7/1976 - M 60-70

Douglas Co. Surveyors Office - Randall W. Smith, Deputy -
Stephen J. Flause - 1/10/2002 & 1/14/2002 - C.S. File 66/32-5

1/10/2002
Found - 14" now ^{26"} dia. Ash ^{FACE ROTTEN} ~~_____~~ & find
_____ record
position to corner, we find small pieces
of ~~_____~~ (144.8 ft.)

1/14/2002
Found - 1963 SW BT gone.
Orig. SW BT gone.
18" now 32" dia., W.Oak fallen on face, we did not
open bears N.84°E., 642.8 ft. (Agrees w/1917
rec.) (Orig. rec. S.86°E., 633.6 ft.) OBT

continued next page

TOWNSHIP 24 RANGE 04 POINT IDENTIFIER # 200140

PRIMARY CORNER DESCRIPTION 1/4 Cor Secs 31 & 32

Alias _____	Description _____
Alias _____	Description _____
Alias _____	Description _____
Alias _____	Description _____

We perpetuate corner position as determined in 1917, renewed in 1963 and accepted in 1976, M60-70. Distance to S 1/16 cor. between Secs. 31 & 32 checked well with M60-70.

(Note: errors in Brg's & Dist's to orig. BTs fd. in 1917) ✓
(Note: Orig. call to stream is 142' south of corner, we find approx. 70')

Set - A 2 3/8" ^{✓ PART 6"} brass cap on a 1 3/8" O.D. by 32" long iron pipe at rec. position from 1963 Ash BT. BC/IP protrudes 4" above ground. (Note: Cedar post found in dug hole)

DOUGLAS COUNTY SURVEYORS OFFICE
 T 24 S (Metal fence)
 1/4 S31 | S32 (Post set 1 ft.)
 R 4 W (East of corner)
 2002

^{15" SCRIBD TRNK} Double trunked W.Oak double blazed & scribed "1/4 S31 CS ^{FHDB} BT" on 12" dia., southerly trunk, bears S. ~~71 1/2~~ ^{72 1/4} W., 90.5 ft.

^{4' x 15" 13" STMP} dia., D.Fir double blazed & scribed "1/4 S32 CS BT" ^{FHDB} bears S. 1 1/2° E., 100.3 ft.

^{19" 16"} dia., W.Oak single blazed & scribed "1/4 S31 CS BT" ^{FHDB} bears N. 8 1/2° W., 200.5 ft.

Corner lies in plowed field.
Compass decl. 17 1/2° E.

NEW BT APPLE DBL TRNK ^{WETLY} ~~LRG TRNK 11"~~ NOT SCRIBD S 58° E 306.2'

4 1/2' TALL STEEL FNC POST N 49 3/4° E 02'