

GOVERNMENT CORNER RESTORATION FORM
DOUGLAS COUNTY SURVEYOR

TOWNSHIP 24S RANGE 04W SECTION 17, DLC 40 PLSS/GCDB No. 24-04-040010

CORNER DESIGNATION: NE CORNER WM. HANNA DLC No. 40

NE COR
DLC 40

CORNER HISTORY, PREVIOUS RENEWALS OR SURVEYS:

- SEE DCSO SURVEY & CORNER RECORDS FOR PLSS 040010.
- CORNER ORIGINALLY ESTABLISHED BY D. HATHORN IN 1856.
- CORNER RESTORED FROM ORIGINAL EVIDENCE MILO E. GODFREY, DEPUTY CO. SURVEYOR, IN 1963 PER CS FILE 53/9-52.
- CORNER RENEWED BY L. MONREAN, DEPUTY CO. SURVEYOR, IN 1989 PER CS FILE 62/63.
- THE 1963 BCIP WAS FOUND & HELD PER M 61-1 & M 78-33.

MONUMENT FOUND (CONDITION AND SOURCE):

A 1" IRON PIPE (I.D.) BY GODFREY IN 1963 PER CS FILE 53/9-52, FIRMLY SET, PROJECTING 10" ABOVE THE GROUND WITH A 2 1/2" BRASS CAP MARKED:

ACCESSORIES FOUND (CONDITION, SOURCE & RECORD):

ORIGINAL BEARING TREES BY D. HATHORN IN 1856:

- A ROOT HOLE BEARS N.65°W., 17.4 FT. WITH THE 24" DIAM. ROTTED AND BROKEN B. OAK STUMP TIPPED OUT OF THE ROOT HOLE. (REC. 16.5 FT.)
- A ROOT HOLE BEARS S.25°W., 19.8 FT. WITH A 20" DIAM. FALLEN B. OAK SNAG ALONGSIDE.

BEARING TREES BY GODFREY IN 1963:

- A 29" DIAM. x 42" HIGH ROTTED D. FIR STUMP BEARS S.56 1/2°E., 53.6 FT. WITH A SCRIBE MARKS VIS. ON A ROTTED BLAZE. (REC. S.56°E.)
- A 20" DIAM. MAPLE BEARS N.15°W., 48.0 FT. WITH A HEALED DOUBLE BLAZE.

BEARING TREES BY MONREAN IN 1989:

- THE NORTHERLY TRUNK OF A 13" DIAM. LOW FORKED MAPLE BEARS N.67°E., 16.2 FT. WITH A HEALED SINGLE BLAZE.
- A 15" DIAM. MADRONE BEARS N.87°W., 18.7 FT. TO THE ROOT CROWN WITH BARK SCRIBE MARKS VIS. (REC. 19.3 FT. MEASURE TO THE TRUNK AT THE BLAZE.)

MONUMENT SET (PROCEDURES AND DESCRIPTION):

NONE

NEW ACCESSORIES:

NONE

COMPASS DECLINATION: 15 1/4° E.

AGENCY:DCSO

PARTY CHIEF: S. J. FLAUSE

WITNESSES: M. KOCH

NOTES: ATTACHED

LOCATION & COMMENTS:

ALL BEARING TREES HAVE BT TAGS ATTACHED. ALL BEARINGS ARE MEASURED TO THE CENTER OF THE TREE AT THE ROOT CROWN AND DISTANCES ARE MEASURED TO THE SIDE AND CENTER OF THE ROOT CROWN.

CORNER FALLS ON A MODERATE EAST SLOPE IN OLD REPROD. FIR FOREST WITH SCATTERED MAPLE, MADRONE & OAK

GEODETIC COORDINATES

LATITUDE:

LONGITUDE:

DATUM: NAD 83(2011)

EPOCH 2010.00

ELLIPSOID: GRS 1980

SOURCE: GeoXT6000

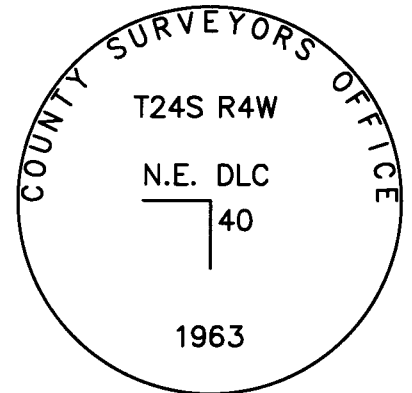
FILE PATH: \\dcnas\Surveyor\Surshared\TraversePC\Corner Renewal DCSO\2015

FILED
Date: 1/27/2021
By: SC
Corner Form and Field Notes:
C.S. 67/48-3
4 Pgs
DOUGLAS COUNTY SURVEYOR

DATE: FEB. 26, 2015

- Condition Report Only
- Not Found
- Renewed
- Unrecorded
- Surveyed In
- Referenced Out

MONUMENT DETAIL



REGISTERED
PROFESSIONAL
LAND SURVEYOR

Kristian O. Degroot

OREGON
JULY 17, 1981
KRISTIAN O. DEGROOT
1941

RENEWAL DATE: 12-31-2021

CS 67/48-3

GOVERNMENT CORNER RESTORATION FORM

TOWNSHIP 24S RANGE 04W SEC. 17 PLSS # 040010

DOUGLAS COUNTY OREGON

DATE FEB. 26, 2015

FILED

Date: 1/27/2021 By: JC
This survey consists of:

Map: _____

Narrative: _____

Corner Rpt: 67/48-3

Corner Designation

DOUGLAS COUNTY
SURVEYOR

NE
DLC 40

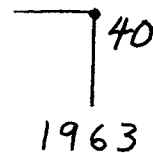
- Condition Report
- Not Found
- Renewed
- Unrecorded
- Surveyed In
- Referenced Out

Previous Renewals 1963, 1989
Monument(s) Found: _____ (Condition and Source)

FROM THE 1963 RENEWAL A 2 1/2 INCH DIAMETER
BRASS CAP (MARKED AS AT RIGHT) ON A 1 INCH I.D.
IRON PIPE FIRMLY SET PROTRUDING 10 INCHES
ABOVE GROUND.

MONUMENT DETAIL

COUNTY SURVEYOR'S OFFICE
T24S R4W
N. E. D.L.C.



Accessories Found

EVIDENCE OF TWO ORIGINAL BT'S.
AN OAK 24" DIA. NOW A ROTTEN AND BROKEN OAK STUMP, TIPPED OUT, THE ROOT-HOLE
OF WHICH BEARS N65°W, 17 1/2 FEET DISTANT (RECORD N65°W, 16 1/2 FEET A POSSIBLE FACE
MEASUREMENT).
AN OAK 20" DIA. NOW A FALLEN BLACK OAK AS DESCRIBED IN 1989 RENEWAL THE ROOT-HOLE
OF WHICH BEARS S25°W, 19 1/2 FEET DISTANT (AS PER RECORD).

TWO 1963 RENEWAL BT'S
A 12" D. FIR NOW A 29 INCH DIAM. 3 1/2 FOOT TALL ROTTEN FIR STUMP IN WHICH IS FOUND
A ROTTEN BUT COMPLETE BLAZE (AS ORIGINALLY DESCRIBED). THIS STUMP BEARS
S56 1/2°E, 53 1/2 FEET DISTANT (RECORD S56°E, 53 1/2 FEET).
A 15" MAPLE NOW A 20 INCH DIAM. MAPLE WITH A FULLY HEALED DOUBLE BLAZE; BEARS
N 15°W, 48 1/2 FEET DISTANT (AS PER RECORD).

TWO 1989 RENEWAL BT'S.
10" NORTHERLY TRUNK OF FORKED MAPLE NOW THE 13 INCH DIAM. NORTHERLY TRUNK OF
LOW FORKED MAPLE WITH A FULLY HEALED SINGLE APPEARING BLAZE; BEARS N67°E,
16 1/2 FEET DISTANT (AS PER RECORD).
13" MADRONE NOW A 15 INCH DIAM. MADRONE WITH MOST OF SCRIBING STILL VISIBLE IN
BARK HEAL; BEARS N87°W, 18 1/2 FEET DISTANT (RECORD N87°W, 19 1/2' IS TO TRUNK AT BLAZE).

C.S. File 67/48-3

RENEWAL

Monument Set (Procedure and Description)

MONUMENT DETAIL

N/A

N/A

New Accessories

N/A

Sketch of Monument, Accessories, and General Area

Location & Comments

SEE 1989 SKETCH

MONUMENT IS ON MODERATE
EAST SLOPE IN OLD REPROD
FIR FOREST WITH SCATTERED
MAPLE, MADRONE AND OAK

Comp. Decline. 15 1/4 ° E
Agency D.C.S.D.
Party Chief STEPHEN JOHN FLAISE
Note keeper Stephen John Flaese
Witnesses MIKE S. KOCH

Surveyor's Seal

2/26/15

TOWNSHIP 24 RANGE 04 POINT IDENTIFIER # 040010

PRIMARY CORNER DESCRIPTION NE Cor Wm. Hanna DLC #40

Alias _____	Description _____
Alias _____	Description _____
Alias _____	Description _____
Alias _____	Description _____

DLC Survey by - Dennis Hathorn, under contract dated Sept 1856. (DCSO DLC records Pg 149)

Set post for cor. - from which

BRN CAN STAMP
 An Oak, 24" dia., bears N.65°W., 25 lks. 16 5 FACE 17 4 R-11
 An Oak, 20" dia., bears S.25°W., 30 lks. 19 2 SEE BELOW
 ROOT-HOLE

Douglas Co. Surveyors Office -Milo E. Godfrey, Deputy Co. Surveyor - Vernon Tracy - Mike Stone - March/April 1963 - C.S. File 53/9

Found - 34" B.Oak, S.25°W., 19.8', cut open lower scar & found good rev. scribing "T". Center of tree rotten, shows very plain upper scar, tree dying.
 30" B.Oak, N.65°E., 16.5', 2 good axe scars very plain, did not open. Tree in fair condition.

Set - Brass cap at cor. mkd: COUNTY SURVEYORS OFFICE 1963 T24S R4W NE DLC 40

20" 15" Maple, N.15°W., 48.0', mkd: NE DLC 40 CS BT. FHSB
 SIZE BELOW 12" D.Fir, S.56°E., 53.6', mkd: NE DLC 40 CS BT.
 An E. and W. fence line is 22.0' North of corner.

Douglas Co. Surveyors Office - Larry E. Monrean - Randall W. Smith - May 17, 1989 - C.S. File 62/63

Found - 1963 County brass cap on a 1 3/8" dia., I.P. protruding 9" above ground. Cap is properly marked - monument is firmly set.

Orig. 24" B.Oak, now down & decayed 27" dia., with previously opened blaze and decayed face. No scribing visible, bears S.25°W., 19.8' to depression in ground. SAME ROOT-HOLE
 Orig. 20" B.Oak, now a 30' high, 34" dia., snag with healed scar bears N.65°W., 16.5' FACE, 17 4 CRH
 15" now 17" dia., Maple with healed blaze bears FHSB
 N.15°W., 48.0'. 1963
 29" x 3 1/2" TALL 12" now 28" dia., Fir, with healed blaze bears ROTTEN FIR STAMP S.56°E., 52.5'. (Rec. 53.6') 1963
 New BTs- 13" Madrone, bark scribed "NE DLC 40 CS BT" bears FOUND ROTTED BLZ CORNER
 15" N.87°W., 19.3' TRNK 18 2 CRH MUST BE VIS IN BARK
 10" Northerly trunk of forked Maple double blazed
 13" and scribed "NE DLC 40 CS BT" bears N. 71°E. 16 2' to center of root crown. FHSB

2' REPORT 10' COUNTY SURVEYOR'S OFFICE

MAD EAD 527
 OLD REPORT FOR
 SCPT MAD. 2012

T 24 S R 4 W
 N.E. D.L.C.
 40
 1963

1
 CS 62/48-30 (4)

File Hold
 Mcd-1
 M78-33