

GOVERNMENT CORNER RESTORATION FORM
DOUGLAS COUNTY SURVEYOR

Date: 1/27/2021 FILED

By: SC

Corner Form and Field Notes:

C.S. 67/48-2 (3 pgs)

DOUGLAS COUNTY SURVEYOR

DATE: Feb 11, 2015

Condition Report Only

Not Found

X Renewed

Unrecorded

Surveyed In

Referenced Out

TOWNSHIP 24S RANGE 04W DLC No. 47 PLSS No. 24-04-047050

CORNER DESIGNATION: INTERIOR "ELL" CORNER
WM. A. ALLEN DLC No. 47

CORNER HISTORY, PREVIOUS RENEWALS OR SURVEYS:

ORIGINAL CORNER ESTABLISHED 1856

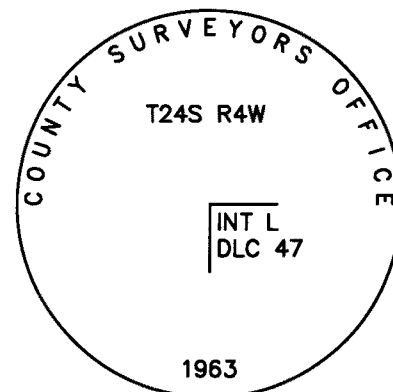
CORNER RESTORED FROM ORIGINAL EVIDENCE IN 1963 BY MILO E. GODFREY,
DEPUTY CO. SURVEYOR, PER CS. 53/9-47.

SEE DCSO SURVEY AND CORNER RECORDS FOR PLSS NO. 047050

MONUMENT DETAIL

MONUMENT FOUND (CONDITION AND SOURCE):

1 1/4" IRON PIPE (I.D.) BY GODFREY IN 1963 PER CS FILE 53/9-47, FIRMLY SET,
PROJECTING 12" ABOVE THE GROUND WITH A 2 1/2" BRASS CAP MARKED:



ACCESSORIES FOUND (CONDITION, SOURCE & RECORD):

AN ORIGINAL BEARING TREE:

A DOWN AND ROTTED BLACK OAK, SIZE INDETERMINATE, BEARS S.59°W., 260.0 FT. WITH NO MARKS
VISIBLE

AND BEARING TREES BY GODFREY IN 1963 PER C.S. 53/9-47:

A 13" W. OAK BEARS S.52 1/2°W., 155.7 FT. WITH A HEALED DOUBLE BLAZE

A 25" W. OAK BEARS N.44 1/2°W., 150.7 FT. WITH A HEALED DOUBLE BLAZE

MONUMENT SET (PROCEDURES AND DESCRIPTION):

NEW ACCESSORIES:

A 7" I. CEDAR BEARS N. 2 1/2°E. 131.9 FT. SCRIBED "X BT".

COMPASS DECLINATION: 15 1/2°E.

AGENCY: DCSO

PARTY CHIEF: S.J. FLAUSE

WITNESSES: M.S. KOCH

NOTES: ATTACHED

LOCATION & COMMENTS:

ALL BEARING TREES HAVE BT TAGS ATTACHED. ALL NEW BEARING
TREES HAVE DOUBLE BLAZED FACES WITH BEARINGS MEASURED TO
THE CENTER OF THE TREE AT THE ROOT CROWN AND DISTANCES
MEASURED TO THE SIDE AND CENTER OF THE ROOT CROWN.

CORNER FALLS APPROXIMATELY 35 FEET WEST OF A N-S WIRE FENCE
LINE ON A BRUSHY WEST SLOPE.

SURVEYOR'S SEAL

REGISTERED
PROFESSIONAL
LAND SURVEYOR

Kristian O. Degroot

OREGON
JULY 17, 1981
KRISTIAN O. DEGROOT
1941

RENEWAL DATE: 12-31-2021

GEODETTIC COORDINATES

LATITUDE:

LONGITUDE:

DATUM: NAD 83(2011)

EPOCH 2010.00

ELLIPSOID: GRS 1980

SOURCE: GeoXT6000

FILE PATH: \\dcnas\Surveyor\Surshared\TraversePC\Corner Renewal DCSO\2015

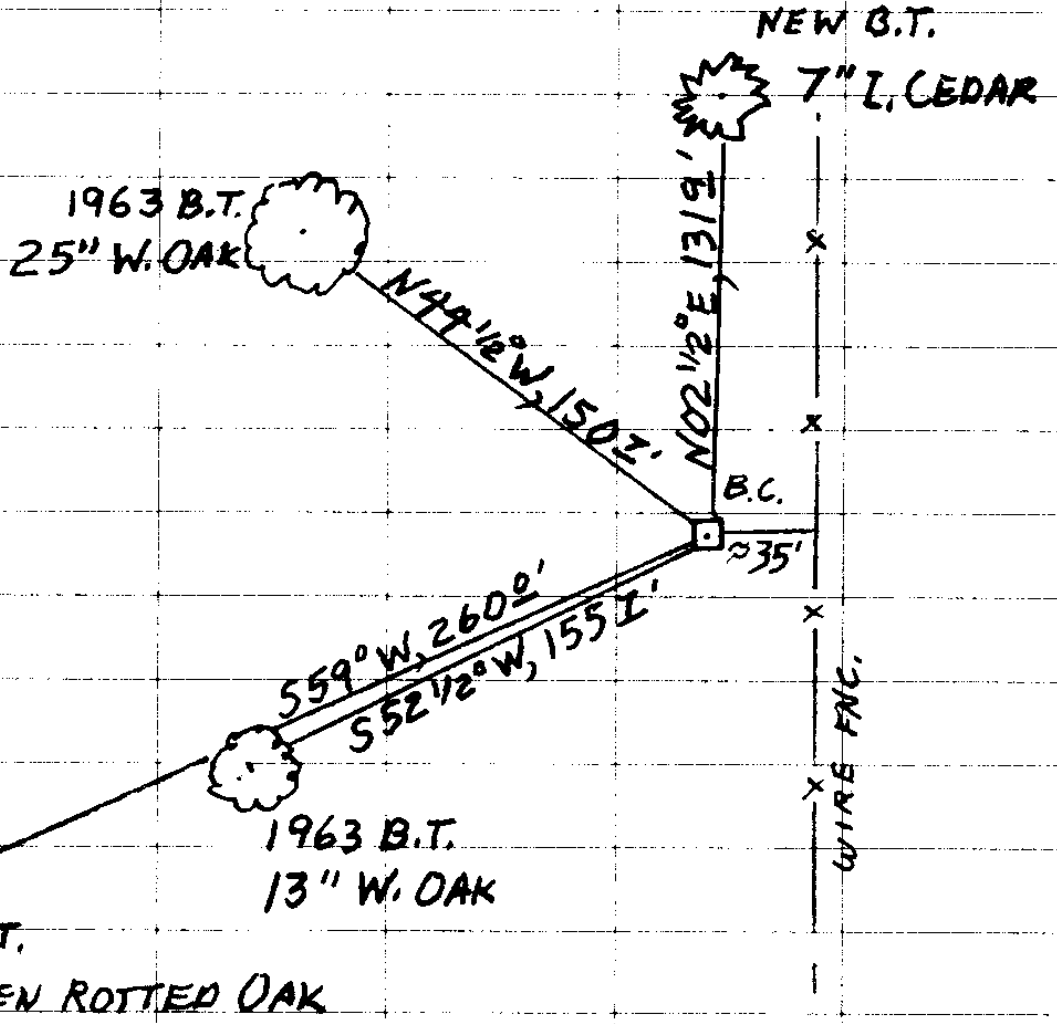
CS 67/48-2

T24S R04W 047050

2/11/15



(NO SCALE)



T. S. V. FLAUSE
 M. Stephen John Flause
 WIT. M. S. KOCH

CS 67/48-2

12)

DONE WITH GEO XT ?

TOWNSHIP 24 RANGE 04 POINT IDENTIFIER # 047050

PRIMARY CORNER DESCRIPTION Int SE Wm Allen DLC #47

Alias _____	Description _____	2/11/15
Alias _____	Description _____	
Alias _____	Description _____	
Alias _____	Description _____	

DLC Survey by - Dennis Hathorn, under contract dated Sept 1856 (DCSO DLC records Pg 158)

 Set post for cor. - from which ²⁶⁰
 An Oak, 18" dia., bears S.59°W., 394 lks.
 An Oak, 15" dia., bears S.53°W., 250 lks.
 165

Douglas Co. Surveyors Office - Milo E. Godfrey, Deputy Co. Surveyor - Vernon Tracy - Mike Stone - March/April 1963 - C.S. File 53/9

~~FALLEN MOSTLY ROTTEN AWAY~~ ^{AVOAK}
 Found - 32" B.Oak, S.59°W., 260.0', cut open & find good scribing "BT". NO MARKS OR BLZ EVIDENCE REMAIN
 Did not find other BTs.

Set - Brass cap at cor. mkd: COUNTY SURVEYORS OFFICE 1963 T24S R4W INT. L DLC 47

13"9" W.Oak, S.52½°W., 155.7', mkd: Int L DLC 47 CS BT FHDB
 25"14" W.Oak, N.44½°W., 150.7' mkd: Int L DLC 47 CS BT FHDB

Corner lies on ~~bare~~ west slope in pastured area.
BRUSHY FORMER

Fd. ok by Templin - 6/1996 - M 125-36

Family Set
Projecting

NEW BT

7" I. CEDAR NO 2 1/2 E, 131 1/2' SCRED "X" "BT" ON HI-LO

CS 67/48-2 (3)