

GOVERNMENT CORNER RESTORATION FORM  
DOUGLAS COUNTY SURVEYOR

TOWNSHIP 30S RANGE 04W SECTION 23

PLSS/GCDB No. 30-04-540320

CORNER DESIGNATION: ~~West~~ 1/16 Corner of section 23  
South

FILED  
Date: 3-17-2020

By: JC

Corner Form: CS 67/46-25

Field Notes: 6 pgs

DOUGLAS COUNTY SURVEYOR

DATE: September 13, 2016

- Condition Report Only
- Not Found
- Renewed
- Unrecorded
- Surveyed In
- Referenced Out

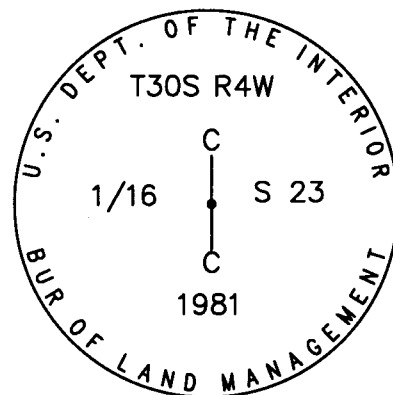
CORNER HISTORY, PREVIOUS RENEWALS OR SURVEYS:

- See DCSO Survey & Corner Records for PLSS 30-04-600340

MONUMENT FOUND (CONDITION AND SOURCE):

- Found a 2" i.d. iron pipe, firmly set, projecting 4" above the ground with a 3 1/4" USBLM Brass cap marked as noted:

MONUMENT DETAIL



ACCESSORIES (CONDITION, SOURCE & RECORD):

Accessory by James E. Jelley for BLM in 1981:

- A 26" D. fir bears N. 77 1/2° E., 32.7 ft. with a healed single blaze. (Rec. N. 73° E., 32.0)
- A 22" x 50' D. fir snag with a healed single blaze, uprooted and out of position. (no discernable roothole)

New Bearing Trees:

- A 18" Incense cedar bears S. 76° W., 28.6 ft. scribed "CS1/16 S23", "CSBT" on a double blaze.

LOCATION & COMMENTS:

All bearing trees have BT tags attached. All new bearing trees have double blazed faces with bearings measured to the center of the tree at the root crown and distances measured to the side and center of the root crown. Monument falls on a gentle north slope with reprod. fir, cedar and maple to the south and east and a mostly cleared pasture to the northwest and lies approximately S. 80° E., 1.2 ft. from a fence corner with fences running north and west.

GEODETIC COORDINATES  
LATITUDE:  
LONGITUDE:  
ELLIPSOID HEIGHT:  
DATUM: NAD 83  
SOURCE: Trimble GeoXT 6000

COMPASS DECLINATION: 15° E.  
AGENCY: DCSO  
PARTY CHIEF: S. J. Flause  
WITNESSES: M. S. Koch  
NOTES: Attached

REGISTERED  
PROFESSIONAL  
LAND SURVEYOR

*Kristian O. Degroot*

OREGON  
JULY 17, 1981  
KRISTIAN O. DEGROOT  
1941

RENEWAL DATE: 12-31-2021

CS 67/46-25

SEPT 13, 2016

T305, R04W, CS 1/16 S23, PLSS 540320

MONUMENT FOUND:

FROM 1981 BLM SUBDIVISION OF SECTION 23, A 3 1/4" DIA. BRASS CAP ON A 2" I.D. IRON PIPE SET PLUMB, PROTRUDING APPROX. 4" ABOVE GROUND. THE BRASS CAP IS MARKED

AS FOLLOWS:

"U. S. DEPT. OF THE INTERIOR"

C  
1/16 | S23  
C  
1981

BUR. OF LAND MANAGEMENT

ACCESSORIES FOUND:

THE TWO 1981 O.B.T.S.

A FIR 5 INS. DIA., NOW A 26" DIA. DOUGLAS

FIR WITH A FULLY HEALED SINGLE BLAZE;  
BEARS N77 1/2° E, 32<sup>±</sup> FT. DISTANT (TO C.R.C.).

THE RECORD N73° E, 32<sup>±</sup> FT. IS TO SCRIBED

PART OF TRUNK.

A FIR 15 INS. DIA., NOW A FALLEN AND

ROLLED OUT OF POSITION 22" DIA. X 50 FT.

②

CS 67146-25

T30S, R04W, PLSS 540320 (CONT'D)<sup>(2)</sup>

LONG FIR SNAG WITH A FULLY HEALED  
SINGLE BLAZE NO LONGER HAS A DISCERN-  
IBLE ROOT-HOLE.

NEW ACCESSORIES:

AN 18" DIA. INCENSE CEDAR SCRIBED  
"CS 1/6 S23" "CSBT" ON A DOUBLE  
BLAZE; BEARS S76°W, 28 $\frac{1}{2}$  FT. DISTANT.  
DECLINATION 15°E

THE BRASS CAP MONUMENT IS ON A GENTLE  
NORTH SLOPE WITH REPROD. FOREST OF FIR,  
CEDAR AND MAPLE TO THE EAST AND SOUTH  
WITH MOSTLY CLEARED PASTURE IN THE  
NW QUADRANT. A FENCE CORNER POST  
FROM WHICH FENCES RUN NORTH AND WEST  
IS APPROX. N80°W, 1 $\frac{1}{2}$  FT. DISTANT.

π S. J. FLAUSE

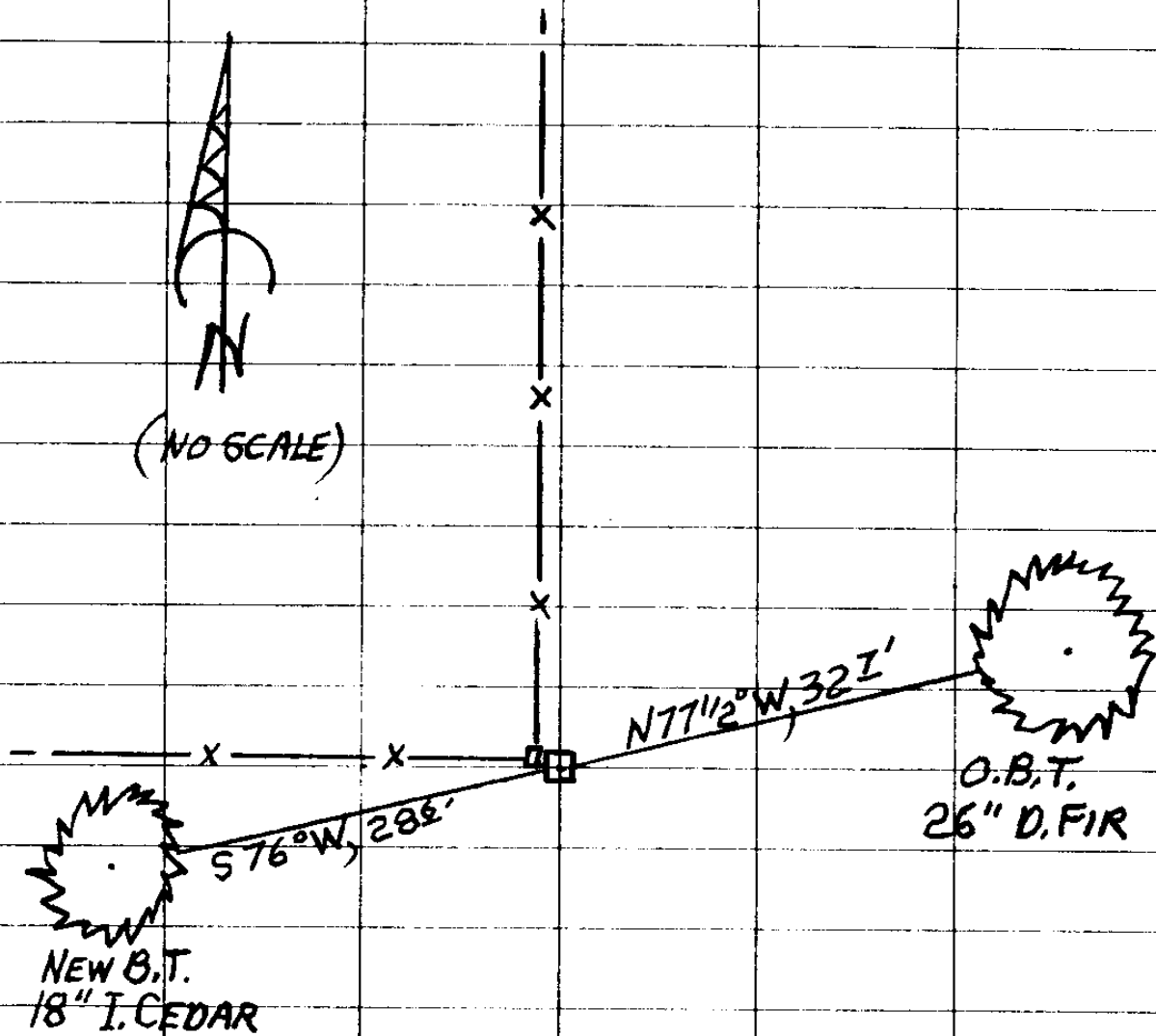
† M. S. KOCH

M Stephen John Flause

③

CS 67/46-25

(3)  
T305, R04W, PLSS 540320 (CONT'D)



(4)

CS 67/46-25

# County Surveyor's Record, Douglas County, Oregon

**16821**

Dependent Resurvey of a Portion of the Boundaries  
of Donation Land Claims, No. 48 and No. 49,  
T. 30 S., R. 4 W., Willamette Meridian, Oregon

**CHAINS**

42.78

The NW. cor. of Donation Land Claim No. 48, perpetuated and recorded by F. C. Frear, Deputy County Surveyor, in 1918, further perpetuated and recorded by James W. Byron, Deputy County Surveyor, in 1963, and still further perpetuated and recorded by John M. Powell, Deputy County Surveyor, in 1972, monumented with an iron pipe, 1/2 in. diam., firmly set, projecting 5 ins. above ground, from which the remains of the original bearing tree:

A black oak snag, 24 ins. diam., bears S. 80° E., 26 lks. dist., with fragmentary scribe marks visible on open blaze.

and the remains of bearing trees mkd. by Byron

A madrone, 9 ins. diam., bears S. 17° E., 21 1/2 lks. dist., with fragmentary scribe marks visible on partially open blaze.

A sawed fir stump, 25 ins. diam., bears S 75° W., 63 lks. dist., no marks visible.

and a bearing tree mkd. by Powell

A madrone, 9 ins. diam., bears N. 39° E., 39 lks. dist., with fragmentary scribe marks visible on partially open blaze.

At the corner point

Set an iron post, 28 ins. long, 2 1/2 ins. diam., 24 ins. in the ground, with brass cap mkd.

T 30 S R 4 W  
S 3 | C 48  
1981

Reset iron pipe alongside iron post.

From this point, the W 1/16 sec. cor. of secs. 3 and 10, bears S. 65° 30' W., 0.605 chs. dist., hereinbefore described.

Subdivision of Section 23, T. 30 S., R. 4 W.  
Willamette Meridian, Oregon

From the 1/4 sec. cor. of secs. 23 and 26.

N. 1° 36' E., on the N. and S. center line of sec. 23.

Descend 510 ft. over broken NW. slope, through heavy timber and dense undergrowth.

Woven wire fence, extends E. and W., enter pasture land.

Point for the center S 1/16 sec. cor. of sec. 23.

Set an iron post, 28 ins. long, 2 1/2 ins. diam., 24 ins. in the ground, with brass cap mkd.

S 1/16 | C S 23  
C  
1981

17.25  
119 4/16  
19.06

5

CS 67/48-25

County Surveyor's Record, Douglas County, Oregon

9/13/16

Subdivision of Section 23, T. 30 S., R. 4 W.  
Willamette Meridian, Oregon

16922

30-04-540320

CHAINS

from which

26"

D. fir, 5 ins. diam., bears N. 73° E., 48 1/2 lks. FH5B  
dist., mkd. CS 1/16 S23 BT.

A fir, 15 ins. diam., bears N. 79° W. 63 lks.  
dist., mkd. CS 1/16 S23 BT. TIPPED & ROLLED OUT OF POS. NO ROOTHOLE

Descend 125 ft. over NW. slope, changing to NE. slope.

38.12 Point for the center 1/4 sec. cor. of sec. 23, at inter-  
section with the E. and W. center line.

Set an iron post, 28 ins. long, 2 1/2 ins. diam., 24 ins.  
in the ground, with brass cap mkd.

U.S. DEPT. OF THE INTERIOR  
T 30 S R 4 W FO. OK 10-98 R. BROWN  
C 1/4 S 23 M119-7  
1981

THIS STAMPING ON  
CS 1/16 PREVIOUS PG.

from which

CS 1/16 MON. IS ON GENTLE NORTH SLOPE REPROD FIR, CED. & MAPLE  
A fir, 24 ins. diam., bears N. 60° E., 45 1/2 lks. TO SOUTH EAST MOSTLY  
dist., mkd. C 1/4 S23 BT. CLEARED IN NW QUA

A black oak, 28 ins. diam., bears S. 1/2° W., 25 lks. FNC. COR POST X N80°W 1/2  
dist., mkd. C 1/4 S23 BT. NEW BT FRES N&W

Descend 35 ft. over broken NE. slope. 18" T. CEDAR "CS 1/16 S 23" "CS BT"

39.25 Gravelled road, 15 lks. wide, bears N. 40° W. and S. 70° E. and 576°W, 286 FT.

66.50 Left bank of South Umpqua River, bears N. 45° W. and  
S. 45° E., course N.45° W.

71.40 Right bank of South Umpqua River, bears N. 55° W. and  
S. 45° E.; asc. 15 ft. over SE. slope.

74.20 South Umpqua Highway, asphalt surfaced, 50 lks. wide,  
bears N. 75° W. and S. 75° E.

74.90 Woven wire fence, extends N. 60° E. and S. 35° E.

76.80 Hammon Creek, 2 lks. wide, course S. 45° W.; asc. 45 ft.  
over SE. slope.

77.84 The 1/4 sec. cor. of secs. 14 and 23, perpetuated and re-  
corded by James W. Byron, Deputy County Surveyor, in 1963,  
determined at record bearing and distance from the remain-  
ing original bearing tree:

A white oak, 22 ins. diam., bears S. 45° W., 36 lks.  
dist. with illegible scribe marks visible on  
partially healed blaze.

and the remains of a bearing tree mkd. by Byron

A root hole, bears N. 86° E., 35 lks. dist., with  
a down oak alongside, 12 ins. diam., with  
a healed blaze.

At the corner point

Set an iron post, 28 ins. long, 2 1/2 ins. diam., 24 ins.  
in the ground, with brass cap mkd.

FALLEN FIR SNAG 22" x 50"

CS 67/46-25 5804937

6