

GOVERNMENT CORNER RESTORATION FORM
DOUGLAS COUNTY SURVEYOR

FILED
Date: 3-17-2020
By: JC
Corner Form: CS 67/46-24
Field Notes: 7 pgs
DOUGLAS COUNTY SURVEYOR

TOWNSHIP 30S RANGE 04W SECTION 23 PLSS/GCDB No. 30-04-540340
CORNER DESIGNATION: Center 1/4 of Section 23

DATE: September, 12, 2016
 Condition Report Only
 Not Found
 Renewed
 Unrecorded
 Surveyed In
 Referenced Out

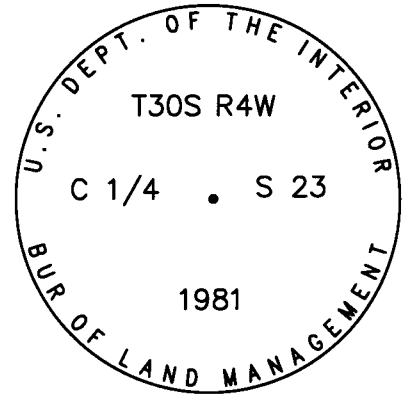
CORNER HISTORY, PREVIOUS RENEWALS OR SURVEYS:

- See DCSO Survey & Corner Records for PLSS 30-04-540340

MONUMENT DETAIL

MONUMENT FOUND (CONDITION AND SOURCE):

- Found a 2 1/2" dia. iron post by James E. Jelly, Cadastral Surveyor, in 1981 per a 1983 USBLM Dependent Resurvey, firmly set, projecting 1" above the ground with a 3 1/4" dia. brass cap marked as follows:



ACCESSORIES (CONDITION, SOURCE & RECORD):

Bearing trees by James E. Jelley 1981:

- A 34" dia. D. fir bears N. 60° E., 30.0 ft. with a healed blaze.
- A root hole bears S. 1/2° W., 16.5 ft. with a 26" dia. x 3' tall rotted B. oak stump with a healed blaze alongside and out of position.

New bearing trees:

- A 10" W. Oak bears N. 8 1/2° E., 24.0 ft. scribed "C1/4 S23" "CS BT"
- A 7" Maple bears S. 2° E., 18.9 ft. scribed "C1/4 S23 CS" "BT"
- A 12" Madrone bears S. 82° W., 4.0 ft. scribed "C1/4 S23" "CS BT"

LOCATION & COMMENTS:

All bearing trees have BT tags attached. All new bearing trees have double blazed faces with bearings measured to the center of the tree at the root crown and distances measured to the side and center of the root crown.

Monument falls near the top of a moderate NE slope in a mixed wooded area of oak, maple, madrone, fir and cedar and 35 ft. east of a driveway.

REGISTERED
PROFESSIONAL
LAND SURVEYOR

Kristian O. Degroot

OREGON
JULY 17, 1981
KRISTIAN O. DEGROOT
1941

RENEWAL DATE: 12-31-2021

GEODETIC COORDINATES
LATITUDE:
LONGITUDE:
ELLIPSOID HEIGHT:
DATUM: NAD 83
SOURCE: Trimble GeoXT 6000

COMPASS DECLINATION: 15° E.
AGENCY:DCSO
PARTY CHIEF: S. J. Flause
WITNESSES: M. S. Koch
NOTES: Attached

C.S FILE 67/46-24

1000

SEPT. 12, 2016

T30S R04W, C1/4 S23, PLSS 540340

MONUMENT FOUND:

FROM THE 1981/82 BLM RESURVEY

THE ORIGINAL MONUMENT A 3 1/4" DIA.
BRASS CAP ON A 2" I.D. IRON PIPE SET
PLUMB AND PROTRUDING 1" ABOVE GROUND.

THE BRASS CAP IS MARKED AS FOLLOWS

" U. S. DEPT OF THE INTERIOR "

T 30 S R 04 W

C 1/4 S 23

1981

BUR. OF LAND MANAGEMENT

ACCESSORIES FOUND:

THE TWO ORIGINAL 1981 B.T.'S.

A FIR 24" DIA, NOW A 34" DIA. DOUGLAS
FIR WITH A FULLY HEALED SINGLE BLAZE;

BEARS N60°E, 30° FT. DISTANT (AS PER
RECORD).

A B. OAK 28" DIA. NOW A ROTTEN AND

TIPPED OUT OF POSITION, SAWN OAK STUMP
NOW 26" IN DIA. AND 3 FT. TALL, THE APPARENT

ROOT HOLE OF WHICH IS GOOD FOR RECORD B. & D.,

(2)

CS 67146-24

(2)
T305, R04W, PLSS 540340 (CONT'D)

THE ROTTED STUMP SHOWS EVIDENCE OF
A HEALED BLAZE; WE DO NOT OPEN.

NEW ACCESSORIES:

A 10" DIA. W. OAK SCRIBED "C'14523"
"CSBT" ON A DOUBLE BLAZE; BEARS
N08½°E, 24° FT. DISTANT.

A 7" DIA. MAPLE SCRIBED "C'14523"
CS "BT" ON A DOUBLE BLAZE; BEARS
S02°E, 18° FT. DISTANT.

A 12" DIA. MADRONE SCRIBED "C'14
523" "CSBT" ON A DOUBLE BLAZE;
BEARS S82°W, 4° FT. DISTANT.

DECLINATION 15°E

THE CORNER MONUMENT IS NEAR THE
TOP OF A MODERATE NE'LY SLOPE IN A
MIXED WOODS OF OAK, MAPLE, MADRONE,
FIR AND CEDAR, 35 FT. EAST FROM A
DRIVEWAY.

✕ S. J. FLAUSE

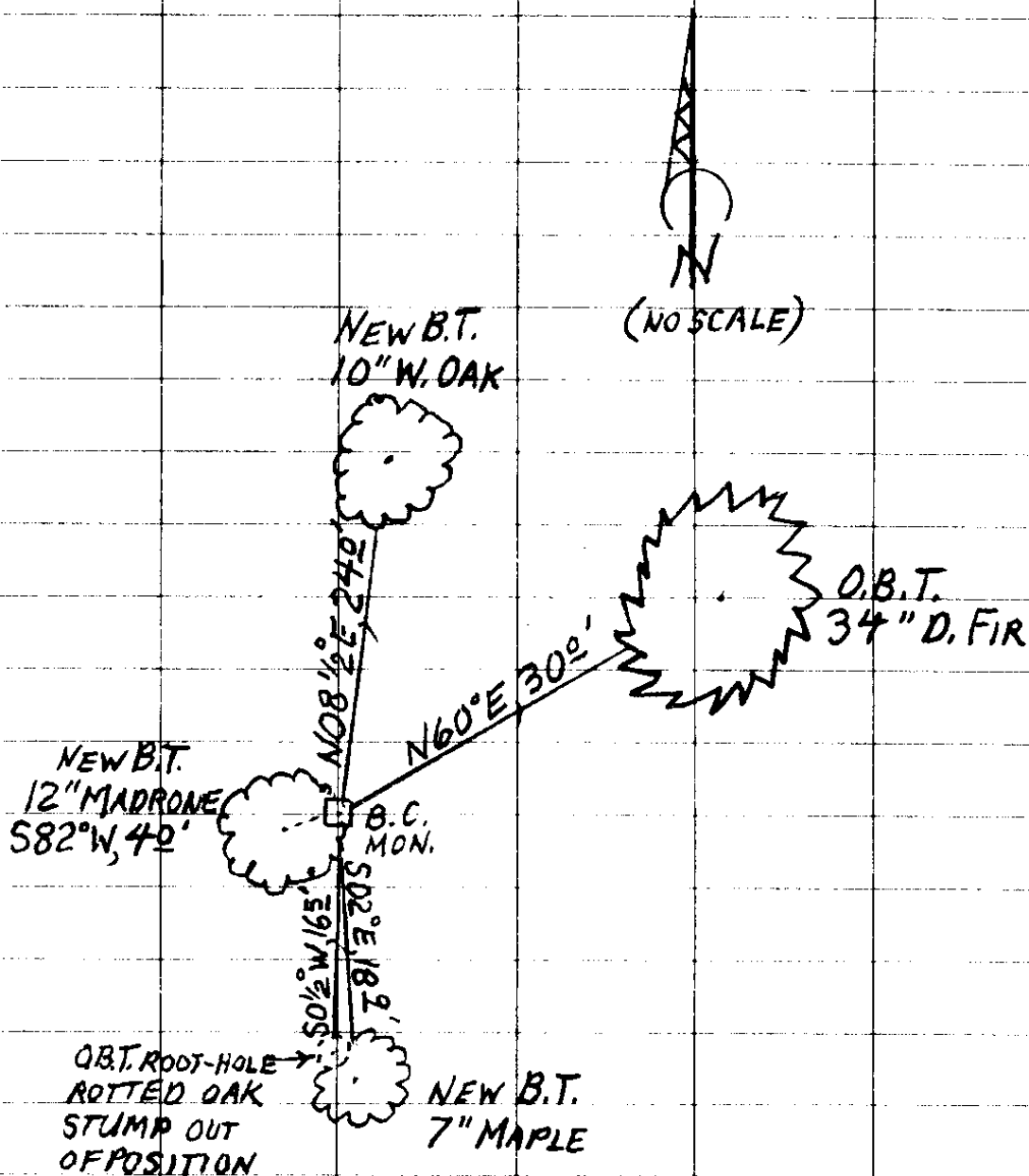
♣ M. S. KOCH

☞ Stephen John Flause

(3)

CS 67146-24

(3)
T30S, R04W, PLSS 540340 (CONT'D)



CS 67/46-24

(4)

9/12/16

US. DEPT. OF THE INTERIOR

3 1/4" BC T30 S R4W

ON 2" DIA P C 1/4 S 23

PROT 1"

1981

Now 34" BUR. OF LAND MANAGEMENT

24" D. FIR N60°E, 30 2 FHSB

28" B OAK S 0 1/2° W, 16 5

ROTTED
TIRED OUT

EVID HEALED BLZ

CUT STMP

26" x 3'

NE'LY
NEAR TOP OF MOD EAST SLOPE IN MIXED
WOODS OF OAK MAPLE MADRONE FIR & CEDAR
35 FT EAST FROM DRIVEWAY

NEW BT'S

10" W. OAK " C 1/4 S 23 " "CS BT" N 8 1/2° E, 29°

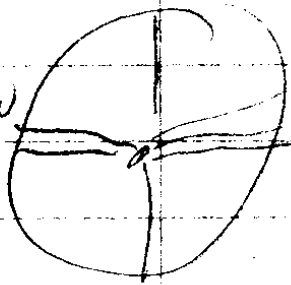
7" MAPLE " C 1/4 S 23 CS " "BT" S 02° E, 18°

12 MADRONE " C 1/4 S 23 " "CS BT" S 82° W, 40°

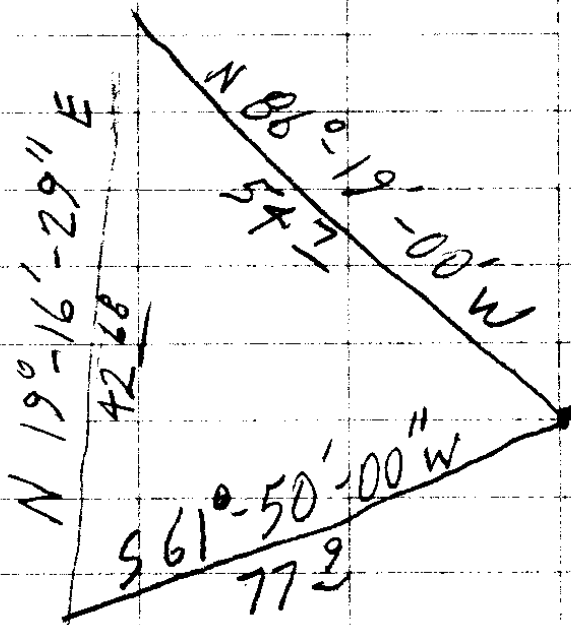
⑤

CS 67/46-24

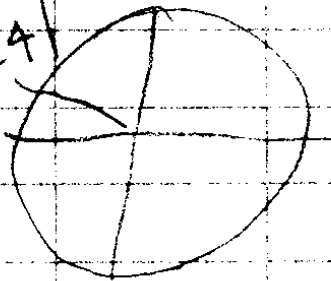
N 89° 52' 25" W



10003 514
19945 413



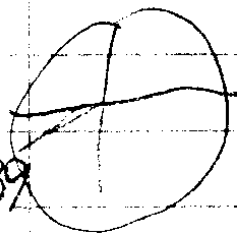
73-41-41



S 53° 54' 10" E

9963 228
19931 325

86-30-39



6

CS 67/46-24

TOWNSHIP 30 RANGE 04 POINT IDENTIFIER # 540340

PRIMARY CORNER DESCRIPTION Center 1/4 Cor. for Sec. 23

Alias _____	Description _____
Alias _____	Description _____
Alias _____	Description _____
Alias _____	Description _____

BLM resurvey by James E. Jelley, Cadastral Surveyor - under Group #1070, surveyed June 1981/May 1982 - (DCSO records Vol. 43 Page(s) 16822)

Point for the center 1/4 sec. cor. of sec. 23, at intersection with the E. and W. center line.

Set an iron post, 28" long, 2½" dia., 24" in the ground, with brass cap mkd:

T 30 S R 4 W
C 1/4 S 23
1981

from which

A Fir 24" dia., bears N.60°E., 45½ lks. dist. mkd. C ¼ S23
BT.

A B.Oak 28" dia., bears S.½°W., 25 lks. dist. mkd. C ¼ S23
BT.

(7)

CS 67/46-24