

GOVERNMENT CORNER RESTORATION FORM
DOUGLAS COUNTY SURVEYOR

FILED
Date: 3-17-2020
By: SC
Corner Form: CS 67/46-17
Field Notes: 7 pgs.
DOUGLAS COUNTY SURVEYOR

TOWNSHIP 24S RANGE 04W SECTION 35 PLSS/GCDB No. 24-04-600100
CORNER DESIGNATION: Section Corner of 1, 2, 35 and 36

DATE: March, 29, 2016
 Condition Report Only
 Not Found
 Renewed
 Unrecorded
 Surveyed In
 Referenced Out

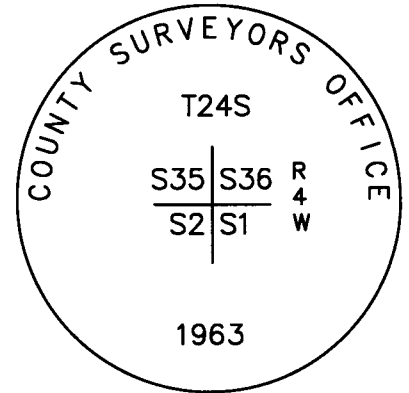
CORNER HISTORY, PREVIOUS RENEWALS OR SURVEYS:

- See DCSO Survey & Corner Records for PLSS 24-04-600100

MONUMENT DETAIL

MONUMENT FOUND (CONDITION AND SOURCE):

- Found a 1" i.d. iron pipe by Milo E. Godfrey, Deputy County Surveyor, in 1963 per C.S. File 53/9, firmly set, projecting 5" above the ground and marked as follows:



ACCESSORIES (CONDITION, SOURCE & RECORD):

Bearing Trees by Rogers and Peterson in 1986 per a 1988 USBLM Dependent Resurvey:

- A 9" x 1' tall D. fir stump bears S. 76 1/4° E., 100.0 ft. with scribe marks "S1 BT" visible on an opened blaze. (Rec. S. 76° E., 99.7 ft.)
- A 13" dead D. fir bears N. 24° W., 152.5 ft. with illegible scribe marks visible on partially healed pitched over blaze.
- A 13" D. fir bears S. 83 1/2° W., 431.6 ft. via healed blaze.

New Bearing Trees:

- A 12" Incense cedar bears N. 67 1/4° E., 224.0 ft. scribed "T24S R4W S36 CS" "BT".
- A 8" W. oak bears S. 31 1/2° W., 118.6 ft. scribed "X", "CSBT" (has old healed blaze facing NNE).
- A 14" W. oak bears N. 33 1/4° W., 131.0 ft. scribed "T24S R4W S35 CS" "BT".

LOCATION & COMMENTS:

All bearing trees have BT tags attached. All new bearing trees have double blazed faces with bearings measured to the center of the tree at the root crown and distances measured to the side and center of the root crown.

Monument falls on a NNW slope in open pasture.

REGISTERED
PROFESSIONAL
LAND SURVEYOR

Kristian O. Degroot

OREGON
JULY 17, 1981
KRISTIAN O. DEGROOT
1941

RENEWAL DATE: 12-31-2021

GEODETIC COORDINATES
LATITUDE:
LONGITUDE:
ELLIPSOID HEIGHT:
DATUM: NAD 83
SOURCE: Trimble GeoXT 6000

COMPASS DECLINATION: 15° E.
AGENCY: DCSO
PARTY CHIEF: S. J. Flause
WITNESSES: M. S. Koch
NOTES: Attached

C.S. FILE 67/46-17

MARCH 29, 2016

T24S, R04W, SE35, PLSS (600100) 600700

MONUMENT FOUND:

FROM THE 1963 DCSD RENEWAL, A 2 1/2" DIA. BRASS CAP ON A 1" I.D. IRON PIPE SET PLUMB, PROT 5" ABOVE GROUND. THE BRASS CAP IS

MARKED AS FOLLOWS:

"COUNTY SURVEYORS OFFICE"

T 2 4 S

S35	S36	R
<hr/>		4
S 2	S 1	W

1963

ACCESSORIES FOUND:

AREA HAS BEEN CLEARED AND BURNED SEVERAL TIMES IN THE PAST FOR PASTURE IMPROVEMENT. NO DISCERNIBLE EVIDENCE OF B.T.'S ESTABLISHED BEFORE THE 1986 BLM RENEWAL REMAINS.

FROM THE 1986 BLM DEPENDENT RESURVEY EVIDENCE OF 3 RENEWAL B.T.'S.

A FIR 6" DIA, NOW A 9" DIA., 1 FT. TALL D. FIR

(7)

CS 67146-17

(2)
T24S R04W, PLSS 600100 (CONT'D)

● STUMP, SHOWING A PARTIALLY HEALED BLAZE WHICH IS OPENED TO REVEAL SCRIBING "S1 BT"; BEARS S76¹/₄° E, 100⁰ FT. DISTANT (RECORD S76° E, 997 FT.).

● A FIR, 7" DIA., NOW A 13" DIA. D. FIR WITH A FULLY HEALED SINGLE BLAZE; BEARS S83¹/₂° W, 431⁶ FT. DISTANT (AS PER RECORD).

● A FIR 7" DIA., NOW A 13" DIA. DEAD D. FIR WITH A PARTIALLY HEALED SINGLE BLAZE SHOWING HEAVILY PITCHED OVER AND ILLEGIBLE SCRIBING; BEARS N24° W, 152⁵ FT. DISTANT (AS PER RECORD).

NEW ACCESSORIES:

● A 12" INCENSE CEDAR SCRIBED "T24S R4WS36CS" "BT" ON A DOUBLE BLAZE; BEARS N67¹/₄° E, 224⁰ FT. DISTANT.

● AN 8" W. OAK SCRIBED "X" "CSBT" ON A HIGH-LOW BLAZE, AND ALSO SHOWING AN OLD BLAZELIKE SCAR FACING NNE; BEARS S31¹/₂° W, 118⁶ FT. DISTANT.

● A 14" W. OAK SCRIBED "T24S R4WS35 CS" "BT" ON A DOUBLE BLAZE; BEARS

(3)

CS 67/46-17

(3)
T24S, R05W, PLSS 600100 (CONT'D)

N33¹/₄°W, 131⁰ FT. DISTANT
DECLINATION 15°E

THE BRASS CAP MONUMENT IS ON A
NNW SLOPE IN OPEN PASTURELAND.

THE PASTURE IS IN A SCATTERED WOODLAND
OF OAK, ASH, FIR AND CEDAR.

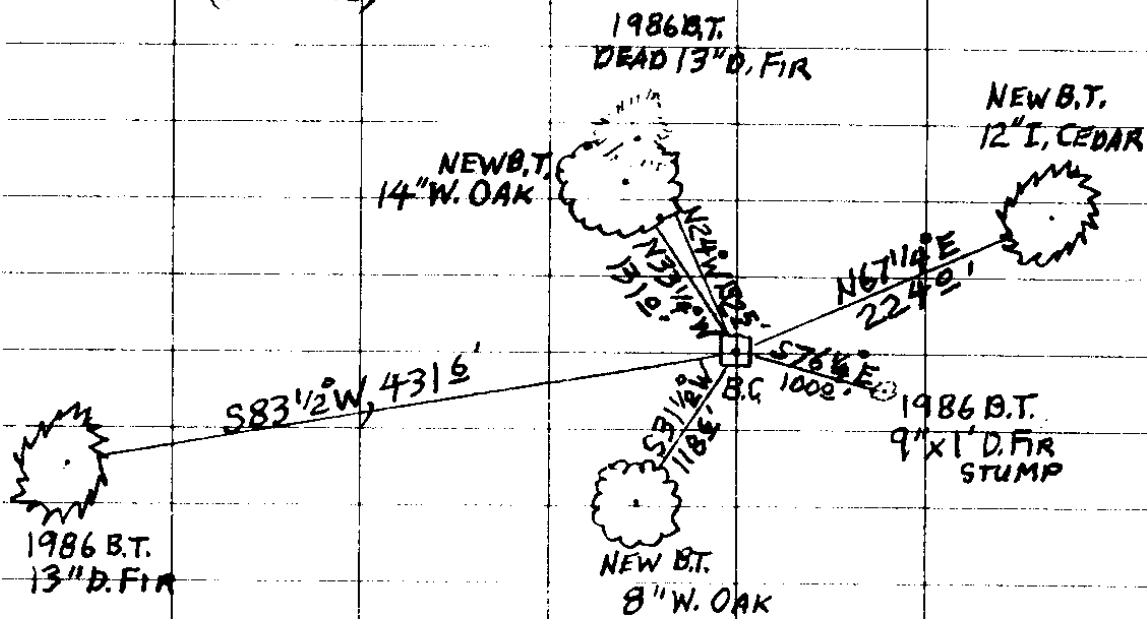
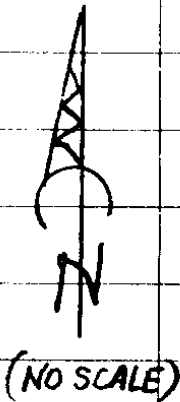
⌘ S.J. FLAUSE

† M.S. KOCH

⌘ Stephen John Flause

(4)

CS 67/46-17



(5)

CS 67/46-17

TOWNSHIP 2A RANGE 04 POINT IDENTIFIER # 600700

PRIMARY CORNER DESCRIPTION Sec. Cor. for 1 & 2; 35 & 36, T 24-4

Alias _____	Description _____
Alias _____	Description _____
Alias _____	Description _____
Alias _____	Description _____

3/29/16

Original - Gordon & Gardner, Contract #52 dated Feb. 1855 (DCSO records, Volume 7 Page 3029)

Set post cor. of secs. 1, 2, 35 and 36, from which

A W.Oak 36" dia. bears N.18°W., 37 lks. dist. 24 42

A W.Oak 36" dia. bears S.74°W., 134 lks. dist. 88 44

A W.Oak 6" dia. bears S.37°E., 158 lks. dist. 104 25

An Ash 10" dia. bears N.30°E., 155 lks. dist. 102 30

N 68 1/2 W, 159.26

F.J. Cole, Deputy Co. Surveyor - Wit: Verner Abeene and C.J. Hunt - May 4, 1914 - F.B. 39 Pg. 34 and Vol. 2 Pg. 256

Renew corner from remains of original BTs.

Set a post, from which

Orig. BT, an oak 12" dia. bears S.37°E., 181 lks.

New BTs - 6" W.Oak bears S.42°W., 33 lks. 21 28

9" W.Oak bears N.54°W., 28 lks. 18 48

9" W.Oak bears N.30°E., 96 lks. 63 36

Milo E. Godfrey, Deputy Co. Surveyor - Vernon Tracy; Mike Stone - May-June, 1963 - C.S. File 53/9

Found - 14" W.Oak N.30°E., 63.4 ft. (to face). Opened & found good scribing "CS".

14" W.Oak N.54°W., 18.5 ft. (to face) Shows good scar. Did not open.

10" W.Oak, in clump of 7, S.42°W., 21.8 ft. (to face). Shows scar.

Dead Oak snag S.37°E., 119.0 ft. Had been previously opened, shows old axe marks. Face rotted. (Orig)

Shell of old Oak stump S.84°W., 103.5 ft. (possible orig. BT) Does not fit brg. or dist. on notes.

FIRM SET

PROV 5" No trace of other original BTs.

Set brass cap at cor. mkd: County Surveyor's T24S S35|S36 R4W Office, 1963 T25S S 2|S 1

Rescribed: 10" W.Oak S.42°W., 21.8 ft. mkd: T25S R4W S2 CSBT.

New BTs - 10" W.Oak N.41°E., 62.6 ft. mkd: T24S R4W S36 CS BT.

11" W.Oak S.3 1/2°E., 35.3 ft. mkd: T25S R4W S1 CS BT.

10" W.Oak N.88°W., 26.1 ft. mkd: T24S R4W S36 CS BT.

m97-62 FHWA/USBRM MAY 15, 1974

Fd. OK, BLM Dependent Resurvey, Rogers & Peterson, 1986 (DCSO records, Volume 48 Page 18267) 4 NEW BTs

Fd. Ok by Greg Lang - April 2002 - M139-73

FD. ok by Kris DeGroot, 8/2008 - 2008-0061A-G

NEW BTs MODERATE NNW SLOPE OPEN PAST. SCAT OAK, ASH, FIR, CED

12" CEDAR "T24SR4WS36CS" "BT" N 67 1/4 E, 2240'

8" W. OAK "X" "CSBT" HI-LO BLZ S 31 1/2 W, 1186' - OLD SCAR FEUC NNE

14" W. OAK "T24SR4WS35CS" "BT" N 33 1/4 W, 1310' CS 67/46-17

County Surveyor's Record, Douglas County, Oregon

Dependent Resurvey of a Portion of the South Boundary, 18267
T. 24 S., R. 4 W., Willamette Meridian, Oregon

CHAINS

(Restoring the survey by Harvey Gordon
and Charles T. Gardner, in 1855)

Beginning at the cor. of secs. 1, 2, 35, and 36, on the S. bdy. of the Tp., perpetuated and recorded by Milo E. Godfrey, Deputy County Surveyor, in 1963, from original evidence no longer in existence, monumented with an iron post, 1½ ins. diam., firmly set, projecting 12 ins. above ground, with brass cap mkd.

COUNTY SURVEYORS OFFICE

T 24 S		R
S 35		S 36
S 2		S 1
T 25 S		4 W
1963		

from which

- NO EVD. A fir, 9 ins. diam., bears N. 77½° E., 231 lks. ^{152 1/2} dist., mkd. T24S R4W S36 BT.
- 1st STMP 9" A fir, 6 ins. diam., bears ^{S 76 1/4° E.} S. 76° E., 151 lks. ^{100 0'} ~~99 66~~ dist., mkd. T25S R4W S1 BT. ^{PARALLEL BLAZE - OPEN FIND S1 BT}
- 13" A fir, 7 ins. diam., bears S. 83½° W., 654 lks. ^{431 64} dist., mkd. T25S R4W S2 BT. ^{FHSB}
- DEAD 13" A fir, 7 ins. diam., bears N. 24° W., 231 lks. ^{152 1/2} dist., mkd. T24S R4W S35 BT. ^{PHSB HEAVY PITCH OVER SCRIB}

S. 89° 33' W., bet. secs. 2 and 35.

Descend over SW. slope, through cleared pasture.

- 4.40 Creek, 1 lk. wide, course S. 65° W.; asc. over SE slope.
- 9.45 Spur, slopes S. 30° W.; desc. over SW. slope.
- 16.20 Cantell Creek, 6 lks. wide, course S. 10° E.; asc. over broken SE. slope, also enter heavy timber and dense undergrowth, edge bears N. 10° W. and S. 10° E.
- 38.10 Spur, slopes S. 25° E.; desc. over broken SW. slope.
- 39.80 The ¼ sec. cor. of secs. 2 and 35, reestablished by proportionate measurement and recorded by F. J. Cole, Deputy County Surveyor, in 1914, and is accepted. Determined from the remains of bearing trees mkd. by Cole:

A sawed cedar stump, 34 ins. diam., bears S. 70° W., 57 lks. dist., with scribe mark B visible on opened blaze.

A sawed fir stump, 37 ins. diam., bears N. 56 ¾° W., 67 lks. dist., with beveled blaze.

At the corner point.

Set a stainless steel post, 28 ins. long, 2½ ins. diam., 26 ins. in the ground, with brass cap mkd.

T 24 S R 4 W
¼ S 35
S 2
T 25 S R 4 W
1986

CS 67/46-17

(7)