

**GOVERNMENT CORNER RESTORATION FORM  
DOUGLAS COUNTY SURVEYOR**

TOWNSHIP 24S RANGE 04W SECTION 35

PLSS/GCDB No. 24-04-600140

CORNER DESIGNATION: 1/4 Corner of Sections 35 & 36

FILED  
Date: 3-17-2020

By: JC

Corner Form: CS 67/46-16

Field Notes: 6 pg.

DOUGLAS COUNTY SURVEYOR

DATE: March, 28, 2016

- Condition Report Only
- Not Found
- Renewed
- Unrecorded
- Surveyed In
- Referenced Out

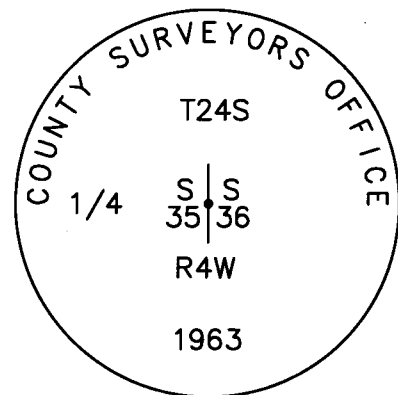
**CORNER HISTORY, PREVIOUS RENEWALS OR SURVEYS:**

- See DCSO Survey & Corner Records for PLSS 24-04-600140

**MONUMENT DETAIL**

**MONUMENT FOUND (CONDITION AND SOURCE):**

- A 1" I.D. iron pipe by Milo E. Godfrey, Deputy County Surveyor, in 1963 per C.S. File 53/9 bent, projecting 13" above the ground and leaning out of a plumb position. After verifying accessories the monument was removed, straightened and reset to plumb position set flush with the ground and with a 2 1/2" diam brass cap marked as follows:



**ACCESSORIES (CONDITION, SOURCE & RECORD):**

An original bearing tree by Gordon & Gardner 1855:

- A 39" W. Oak bears N 63° E, 153.1 ft. with a previously opened blaze.

And bearing trees Milo E. Godfrey in 1963:

- A 42" I. Cedar bears S. 63° E., 60.0 ft. no longer shows blaze evidence.
- A root hole bears S. 87° W., 41.0 ft. with rotted fir remnants alongside.

**New Bearing Trees:**

- A 26" Ash bears N. 25° E., 195.1 ft scribed "1/4 S36 CS" "BT"
- A 30" W. Oak S. 8 1/2° W., 52.2 ft. scribed "1/4 S35" "CS BT"
- A white metal witness sign on a steel post bears West, 29.0 ft. This post is set in a wire pasture fence bearing N. 18 1/2°E. -- S. 18 1/2°W.

**LOCATION & COMMENTS:**

All bearing trees have BT tags attached. All new bearing trees have double blazed faces with bearings measured to the center of the tree at the root crown and distances measured to the side and center of the root crown.

The monuments falls approximately 110 feet west of a stream flowing SSW on flat pasture ground in scattered oak, fir, cedar and ash timber.

GEODETIC COORDINATES  
LATITUDE:  
LONGITUDE:  
ELLIPSOID HEIGHT:  
DATUM: NAD 83  
SOURCE: Trimble GeoXT 6000

COMPASS DECLINATION: 15° E.  
AGENCY:DCSO  
PARTY CHIEF: S. J. Flause  
WITNESSES: M. S. Koch  
NOTES: Attached

REGISTERED  
PROFESSIONAL  
LAND SURVEYOR

*Kristian O. Degroot*

OREGON  
JULY 17, 1981  
KRISTIAN O. DEGROOT  
1941

RENEWAL DATE: 12-31-2021

C.S. FILE 67/46-16

11

MARCH 28, 2016

T24S, R04W, E 1/4 S35, PLSS 600140

MONUMENT FOUND:

A 2 1/2" DIA. BRASS CAP ON A 1" I.D. IRON PIPE PROTRUDING 13" ABOVE GROUND, LEANING AND BENT APPROX. N55°E, 1 1/2 FT. OFF OF PLUMB.

THE MONUMENT BRASS CAP IS MARKED AS FOLLOWS:

"COUNTY SURVEYORS OFFICE"

		T 24 S	
		S   S	
1/4		•	
		35   36	
		R 4 W	
		1963	

ACCESSORIES FOUND:

(ACCESSORY POSITIONS ARE MEASURED FROM WHAT WOULD BE THE STRAIGHTENED AND PLUMB POSITION OF THE FOUND B.C. MONUMENT.)

ONE O.B.T, THE W. OAK 24" DIA. NOW A 39" DIA. W. OAK WITH A PREVIOUSLY OPENED BLAZE NOW REVEALING A ROTTED TREE CENTER; BEARS N63°E, 153 1/2 FT. DISTANT (AS PER RECORD) NO EVIDENCE OF SW O.B.T. REMAINS.

2

CS 67/46-16

(2)  
T245, R04W, PLSS 600142 (CONT'D)

EVIDENCE OF THE TWO 1963 RENEWAL B.T.'S.

A 36" I CEDAR, NOW A 42" DIA. I CEDAR NO LONGER

SHOWING CLEAR BLAZE EVIDENCE; BEARS S63°E,

60<sup>±</sup> FT. DISTANT (AS PER RECORD)

A 7" D. FIR NOW ROTTED FIR REMNANTS IN GROUND

(BUT WITH NO CLEAR STUMP EVIDENCE); BEARS S87°W,

41<sup>±</sup> FT. DISTANT (AS PER RECORD)

FOUND B.C. MONUMENT RETURNED TO PLUMB POSITION;

AFTER VERIFYING PLUMB LOCATION WITH FOUND

ACCESSORIES, THIS POSITION IS REFERENCED OUT

AND THE B.C. MONUMENT IS REMOVED FROM GROUND.

THE IRON PIPE OF THE MONUMENT IS STRAIGHTENED

AND THE MONUMENT IS REESTABLISHED AT THE

REFERENCED OUT PLUMB POSITION. THE B.C.

MONUMENT IS NOW SET PLUMB WITH ITS TOP

FLUSH WITH GROUND.

NEW ACCESSORIES:

A 26" DIA. ASH SCRIBED "1/4 S36 CS" "BT"  
ON A DOUBLE BLAZE; BEARS N25°E, 195<sup>±</sup> FT. DISTANT.

A 30" W. OAK SCRIBED "1/4 S35" "CS BT" ON A  
DOUBLE BLAZE; BEARS S8<sup>1</sup>/<sub>2</sub>°W, 52<sup>±</sup> FT. DISTANT.

(3)

CS 67/46-16

(3)  
T24S, R04W, PLSS 600140 (CONT'D)

A WHITE METAL WITNESS SIGN ON A STEEL POST;  
BEARS WEST, 29<sup>0</sup> FT. DISTANT, THIS WITNESS SIGN  
IS IN A WIRE PASTURE FENCE RUNNING NE-SW, 18<sup>1</sup>/<sub>2</sub>.  
DECLINATION 15°

THE B.C. MON. IS ON FLAT GROUND IN A  
STREAM BOTTOM PASTURE WITH SCATTERED  
MOSTLY OAK AND SOME FIR, CEDAR AND ASH.

A STREAM RUNNING SSW BEARS EAST APPROX.  
110 FT.

π S. J. FLAUSE

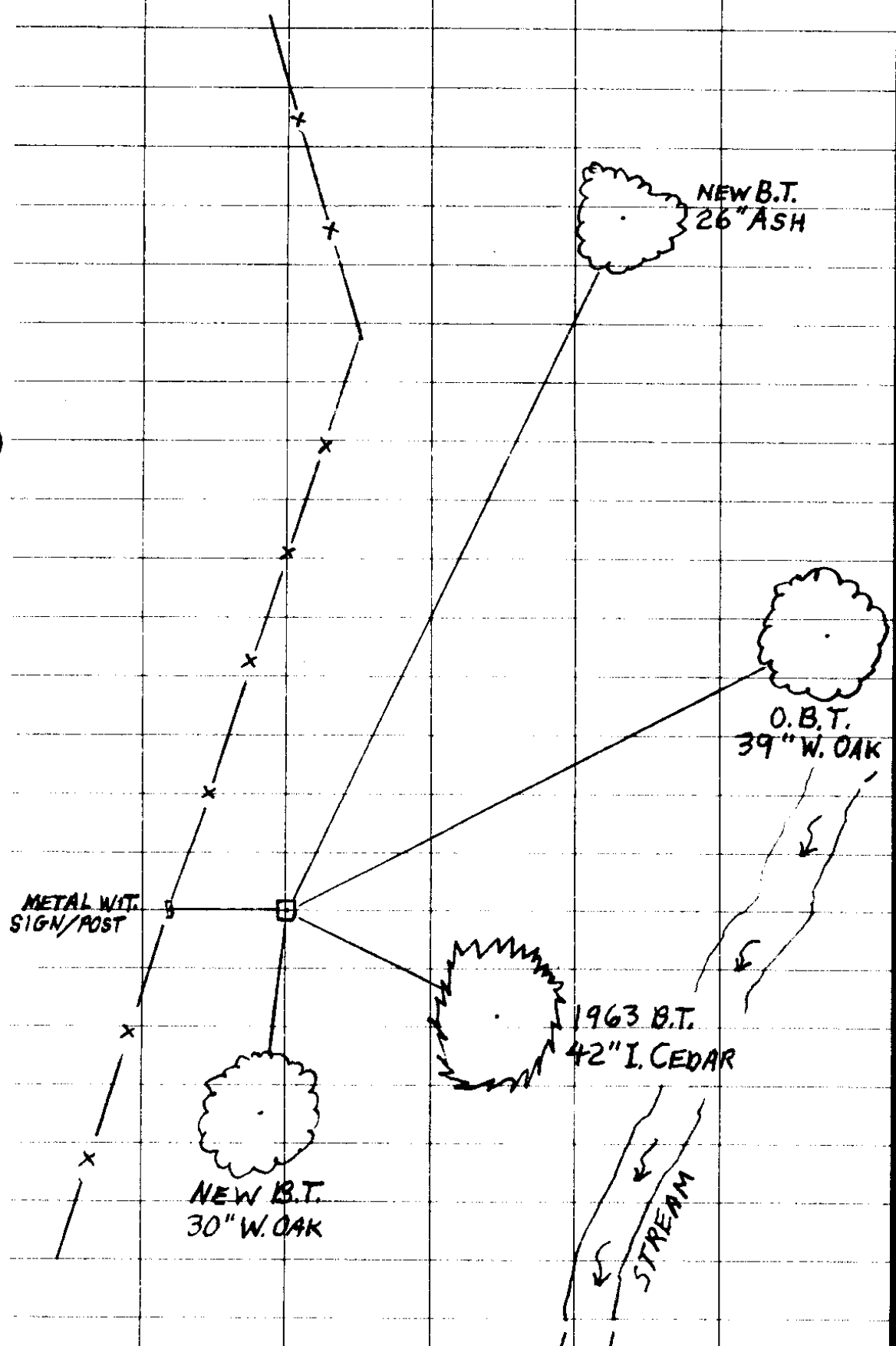
† M. S. KOCH

M Stephen John Flause

(4)

CS 67/46-16

(4)



(5)

CS 67/46-16

3/28/16

TOWNSHIP 24 RANGE 04 POINT IDENTIFIER # 600140

PRIMARY CORNER DESCRIPTION 1/4 Cor. Secs. 35 & 36

Alias _____	Description _____
Alias _____	Description _____
Alias _____	Description _____
Alias _____	Description _____

Original - Gordon & Gardner, Contract #52 dated Feb. 1855 (DCSO records, Volume 7 Page 3033)

-----

Set 1/4 sec. post from which  
 39" A W.Oak, 24" dia., bears N.63°E., 232 lks. 153<sup>12</sup> POB ROTTER CENTER  
 A W.Oak, 10" dia., bears N.65°W., 158 lks. 104<sup>28</sup>

Douglas Co. Surveyors Office -Milo E. Godfrey, Deputy Co. Surveyor - Vernon Tracy - Mike Stone - June 1963 - C.S. File 53/9

-----

Found - 34" W.Oak, N.63°E., 153.1', showed 2 very plain scars, opened & found fragment of reverse scribing "1". Tree rotted out inside, destroyed most of the scribing before the scar healed over.

No trace of NW tree.

Set - Brass cap at cor. mkd: PROTRUDING 13" BENT 055 FROM 14MB  
 County Surveyor's Office 1963  
 T24S R4W 1/4 S35/S36  
42" 36" I.Cedar, S.63°E., 60.0' mkd: 1/4 S36 CS BT  
NOTTEN FIR NO CLEAR 57" D. Fir, S.87°W., 41.0' mkd: 1/4 S35 CS BT  
 Note - 57" Corner lies in nearly level creek valley, approx. 150 ft. west of creek.

Fd. & used by BLM dependent resurvey by Wayne L. Rogers & Boyd W. Peterson, Cadastral Surveyors, under Group #1314, surveyed April/May 1986 (DCSO records Vol. 48 Page(s) 18272)

FD. ok by Kris DeGroot, 8/2008 - 2008-0061A-G

BLM NEW TREES FROM 63  
 CED 564°E, 59.40  
 FIR 586 1/4°W, 40.26

24' EAST NTHLY-STNLY PASTURE FENCING  
 NEW BTs  
 26" ASH SCRUB "1/4 S36CS" BT N25°E, 195 L

30" W.OAK SCRUB "1/4 S35" "CSBT" S8 1/2°W, 52 ±

STREAM BOTTOM PASTURE SCAR, OAK, FIR, CED, ASH

NOW FLUSH  
 COUNTY SURVEYORS OFFICE  
 T24S  
 1/4 S | S  
 35 | 36  
 R4W  
 1963  
 METAL W/ POST & SIGN  
 WEST 290  
 IN-FENC RUNNING NE-SW 1/2

CS 67/46-16

6