

GOVERNMENT CORNER RESTORATION FORM  
DOUGLAS COUNTY SURVEYOR

FILED  
Date: 3-16-2020  
By: JC  
Corner Form: CS67/46-13  
Field Notes: \_\_\_\_\_  
DOUGLAS COUNTY SURVEYOR

TOWNSHIP 24 S RANGE 04 W SECTION 6

PLSS/GCDB No.24-04-037020

CORNER DESIGNATION: NW Corner of Cozad DLC #37

CORNER HISTORY, PREVIOUS RENEWALS OR SURVEYS:

- SEE DCSO SURVEY & CORNER RECORDS FOR PLSS 24-04-037020

MONUMENT (CONDITION AND SOURCE):

- Found a 1" Diam. iron bar by F.C. Frear in 1931 per "Old Corner Book" Pg. 43, firmly set, projecting 7" above the ground and leaning approximately 0.2 ft. Westerly. All accessories measured from the plumb position.

DATE: October, 21, 2013  
 Condition Report Only  
 Not Found  
 Renewed  
 Unrecorded  
 Surveyed In  
 Referenced Out

MONUMENT DETAIL

ACCESSORIES (CONDITION, SOURCE & RECORD):

Bearing Trees by F.C. Frear in 1931:

- A 22" diam. W. oak bears N. 71° E., 34.9 ft. with a healed double blaze. (Rec. N. 70° E, 33.8 ft. was a possible face measurement)
- A 13" x 1.5' tall rotted oak stump bears S. 04° E., 9.4 ft.

Bearing Trees by M.E. Godfrey, Deputy County Surveyor, in 1963 per C.S. File No. 53/9:

- A 22" x 1' tall rotted D. fir stump bears S. 57° W., 12.5 ft. with a healed blaze.
- A 20" x 1' tall D. fir stump bears N. 22 1/2° W., 13.3 ft. (Rec. N.24° W., 13.3 ft. was to the center of the tree thus not a root crown measurement)

Unrecorded Bearing Tree by Roseburg Resources in 1999:

- A 11" diam. W. oak bears N. 32 1/2° W., 27.0 ft. with a healed blaze (BT tag reads S. 31° E.)

New Bearing Accessories:

- A 7" diam. madrone bears N. 32 3/4° E., 25.1 ft. scribed "NNW DLC 37 CS" "BT".
- A 5" diam. P. pine bears S. 11° E., 31.8 ft. scribed "X", "CS BT".
- A galvanized steel post projecting 58" from the ground set 0.5 ft. North.

LOCATION & COMMENTS:

The corner falls on a wooded bench of oak and madrone, Approximately 25 ft. South of an East-West wire fence and approximately 70 ft. West from a NNE gravel road.

All bearing trees have BT Tags attached. All new bearing trees have double blazed faces with bearing measured to the center of the trees at the root crown and distances measured to the side and center of the root crown.

REGISTERED  
PROFESSIONAL  
LAND SURVEYOR

*Kristian O. Degroot*

OREGON  
JULY 17, 1981  
KRISTIAN O. DEGROOT  
1941

RENEWAL DATE: 12-31-2021

GEODETIC COORDINATES

LATITUDE:

LONGITUDE:

DATUM: NAD 83

SOURCE: GeoXT6000

OREGON SOUTH-ZONE3602:

FILE PATH:

COMPASS DECLINATION: 15 1/2° E.

AGENCY:DCSO

PARTY CHIEF: S. J. Flause

WITNESSES:M. S. Koch

NOTES: ATTACHED

C.S. FILE: 67/46-13

OCT. 21, 2013

T245, R04W, NNW DLG 37, PLSS Q37020

### MONUMENT FOUND:

FROM THE 1931 DCSD RENEWAL  
A 1" x 28' ROUND IRON BAR NOW A 1 INCH  
DIA. IRON BAR, PROTRUDING 7 INCHES  
FROM ROCKY GROUND AND LEANING APPROX.  
0<sup>o</sup> FT. WESTERLY FROM PLUMB.

THE FOLLOWING FOUND ACCESSORIES ARE  
MEASURED FROM THE FOUND MONUMENT  
PLUMB POSITION.

### ACCESSORIES FOUND:

NO EVIDENCE REMAINS FROM O.B.T.S.  
THE TWO 1931 DCSD RENEWAL B.T.S.  
A 16" W. OAK, NOW A 22" DIA. W. OAK WITH  
A FULLY HEALED DOUBLE BLAKE; BEARS  
N 71° E, 34<sup>o</sup> FT. PLUMB (RECORD N 70° E,  
33<sup>o</sup> FT. IS MORE OF A FACE MEASURE).

A 17" W. OAK, NOW A ROTTED OUT 13" DIA.  
1 1/2 FT. TALL OAK STUMP; BEARS S 04° E  
9<sup>o</sup> FT. DISTANT (AS PER RECORD).

THE TWO 1963 DCSD RENEWALS NEW  
BEARING TREES. A 13" D. FIR, NOW A ROTTED

(2)  
T245, R04W, PLS, 0370'00 (CONT'D)

- 22" DIA., 1 FT. TALL FIR STUMP WITH A POSSIBLE HEALED LOW BLAZE (NOT OPENED); BEARS S57°W, 12<sup>±</sup> FT. DISTANT (AS PER RECORD).
- AN 8" D. FIR, NOW A 20" DIA., 1 FT. TALL D. FIR STUMP WITH NO BLAZE OR SCRIBING LEFT; BEARS N22<sup>1</sup>/<sub>2</sub>°W, 13<sup>±</sup> FT. DISTANT (RECORD, N24°W, 13<sup>±</sup> FT. IS MORE TO CENTER OF TRUNK AND NOT CENTER OF ROOT CROWN).

AN UNRECORDED BEARING TREE WITH A 1999 ROSEBURG RESOURCES BEARING TREE TAG IS AN 11" DIA. W. OAK WITH A FULLY HEALED SINGLE BLAZE. THIS TREE BEARS N32<sup>1</sup>/<sub>2</sub>°W, 27° (RECORD ON B.T. TAG EQUATES TO N31°W, 27° FT.).

- NEW ACCESSORIES: DOUBLE BLAZED AND A 7" DIA. MADRONE<sup>V</sup> SCRIBED "NNW D/LC 37CS" "BT"; BEARS N32<sup>3</sup>/<sub>4</sub>°E, 25<sup>±</sup> FT. DISTANT.
- A 5" DIA. PONDEROSA PINE SCRIBED "X" "CSBT" ON A HIGH-LOW BLAZE; BEARS S11°E, 31<sup>±</sup> FT. DISTANT.

A GALVANIZED STEEL POST SET PROTRUDING 58" ABOVE GROUND IS SET 05 FT. NORTH FROM

3)  
T24S, R04W, PLSS 037020 (CONT'D)

● CORNER MONUMENT.

DECLINATION  $15^{\circ} 12' E$

● IRON BAR CORNER MONUMENT IS APPROX.  
70 FT. WEST FROM A NNE RUNNING  
GRAVELLED ROAD AND APPROX. 25 FT.

● SOUTH FROM AN EAST-WEST RUNNING  
WIRE FENCE. MONUMENT IS ON FLAT  
BENCHLAND WITH OAK AND MADRONE  
WOODS TO NORTH AND YOUNG PLANTED  
PINE, CEDAR, AND FIR TO SOUTH.

π S. J. FLAUSE

⊕ M. S. KOCH

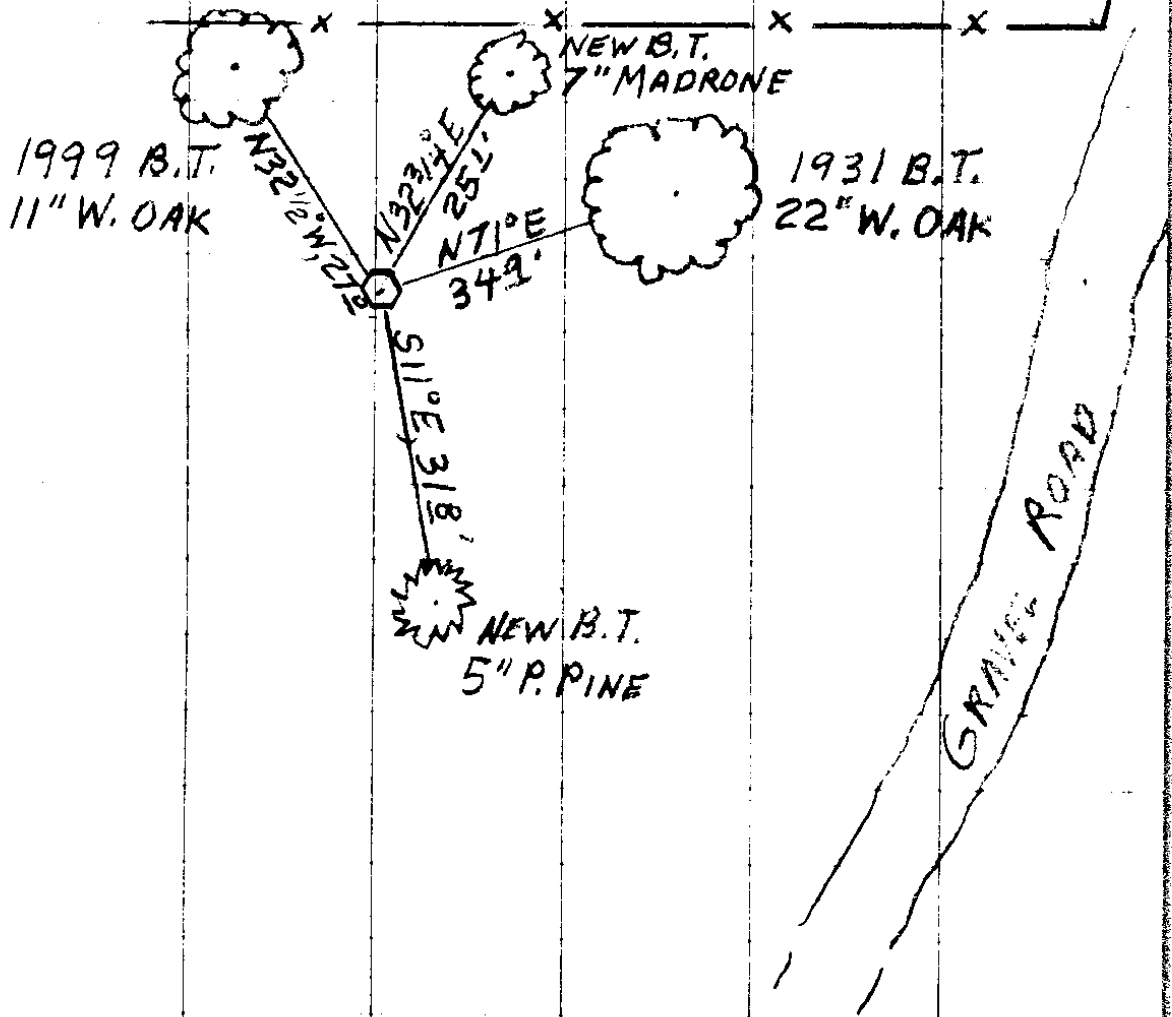
☞ Stephen John Flause

T245, R04W, PL55 037020 (CONT'D)

SKETCH ONLY SHOWS LIVE B.T.s.



(NO SCALE)



PATSTON

BAUMGAR,

10/21/13

TOWNSHIP 24 RANGE 04 POINT IDENTIFIER # 037020

PRIMARY CORNER DESCRIPTION NNW Cor. Cozad DLC 37

SECTION 6

Alias _____	Description _____
Alias _____	Description _____
Alias _____	Description _____
Alias _____	Description _____

DLC Survey by - Dennis Hathorn, under contract dated Sept 1856 (DCSO DLC records Pg 146)

-----

Set post NW cor. from which

An Oak, 24" dia., bears N.60°E., 75 lks. **5148**

*NO EVO.* An Oak, 30" dia., bears S.60°E., 124 lks. **8184**

Douglas Co. Surveyors Office - F.C. Frear, Co. Rd. Master - Witnesses: L.D. Pinkston, B.A. Lane, N.E. Richardson, & Milton Palm - Aug. 1931 - "Old" Corner Book Pg. 43

-----

From the orig. BTs as follows:

A stump 30" dia., bears S.60°E., 124 lks., scribe marks plain.

Other tree down, badly rotted did not find scribe marks, N.60°E., 7.5 lks(?) **495?** *FACE?*

Set - A 1"x28" round iron bar for <sup>7</sup>corner, from which

22" A W.Oak, 16" dia., bears N.70°E., 33.8' **342** *FHDB*

13" A W.Oak, 16" dia., bears S.4°E., 9.4' **✓**

*ROTTEN 13" x 1 1/2" STMP*

Douglas Co. Surveyors Office - Milo E. Godfrey, Deputy Co. Surveyor - Vernon Tracy - Mike Stone - June 1963 - C.S. File 53/9

-----

Found - 1" iron rod 7" above ground. *LEANS ≈ 02° W IN ROCKY GRND.*

16" W.Oak, S.4°E., 9.4', good scars but face rotted away.

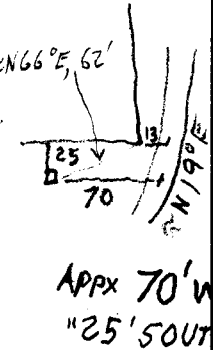
17" W.Oak, N.70°E., 33.8', shows good scars. Did not open.

DID NOT SET BRASS CAP

New BTs - 13" D.Fir, S.57°W., 12'5", mkd: NW DLC 37 CS BT. *POS LOW BLZ DONT OPEN*

8" D.Fir, N.24°W., 13'3", mkd: NW DLC 37 CS BT. *NO BLZ OR FACE LEFT.*

A N & S fence line bears East approx. 60' & a N & S logging road (?) bears West 35'.



*APPX 70' WEST GRAV RD.*

*"25' SOUTH OF E-W FNC.*

*ROTTEN 22" x 1" STMP*

*PARTLY ROTT 20" x 1" TALL 8"*

*BEARING CNTR TRNK*

*CRC = N 22 1/2° W*

*AND AN UNRECORDED 1999 ROSB RESURVEY BT*

*11" W. OAK WITH FH58 BEARS N 32 1/2° W, 270 (RECORD N 31 W, 270) FH58*

**NEW BTs**

*7" MADRONE "NNW DLC 37 CS" "BT," N 32 3/4° E, 25 L*

*5" P. PINE "X" "CSBT", S 11° E, 318*

**GALV STEEL POST PROT 58" NORTH 05'**

*MON ON FLAT BNCII LAND OAK & MD TO NORTH AND PLANTED PINE CED FIR SOUTH*