

GOVERNMENT CORNER RESTORATION FORM
DOUGLAS COUNTY SURVEYOR

TOWNSHIP 30S RANGE 05W SECTION 27

PLSS/GCDB No. 30-05-051040

CORNER DESIGNATION: S SE Corner of Clark DLC #51

FILED
Date: 3-16-2020
By: SC
Corner Form: CS 67/46-10
Field Notes: _____
DOUGLAS COUNTY SURVEYOR

CORNER HISTORY, PREVIOUS RENEWALS OR SURVEYS:

- See DCSO Survey & Corner records for PLSS 30-05-051040.

DATE: October, 29, 2012
 Condition Report Only
 Not Found
 Renewed
 Unrecorded
 Surveyed In
 Referenced Out

MONUMENT FOUND (CONDITION AND SOURCE):

- A 1" diam. iron pipe by George J. Wenderoth, Deputy County Surveyor, in 1949 per C.S. File 40/270, firmly set, 6" below the ground and 2 ft. South of East-West fenceline.

ACCESSORIES FOUND (CONDITION, SOURCE & RECORD):

Bearing trees by George J. Wenderoth in 1949 per C.S. File No. 40/270:

- A root hole bears N.55°E., 183.0 ft. (10" W. Oak per record).
- A 24" Maple bears N.85° 15' E., 109.9 ft. with healed double blaze

NEW ACCESSORIES (PROCEDURES AND DESCRIPTION):

- A 1 1/4" Drill rod per M 7-70 with mushroomed top 1" below the ground bears S.19° 14' W., 240.5 ft. (Rec. 240.8 ft.)
- A 1" x 2 1/2" BCIP at the NW corner of DLC 58 bears, S.89° 41' W., 82.6 ft.
- A 41" Sequoia bears N.53 1/4° W., 90.0 ft. (not blazed or scribed because it has a sign on its West side marked "Ed Hyatt Memorial")

(Basis of Bearings: S.89°41'W., 82.6 ft. between the NE Corner of DLC 58 and the SSE Corner of DLC 51 per M7-70)

LOCATION & COMMENTS:

All bearing trees have BT tags attached. 1949 monument is found on flat land in with mixed timber.

GEODETTIC COORDINATES
LATITUDE:
LONGITUDE:
ELLIPSOID HEIGHT:
DATUM:
SOURCE:

COMPASS DECLINATION: 15° E.
AGENCY:DCSO
PARTY CHIEF: S.J Flause
WITNESSES: M. Koch
NOTES: ATTACHED

REGISTERED
PROFESSIONAL
LAND SURVEYOR
Kristian O. Degroot
OREGON
JULY 17, 1981
KRISTIAN O. DEGROOT
1941
RENEWAL DATE: 12-31-2021

CS 67/46-10

C.S. FILE

OCT. 29, 2012

T30S, R05W, SSE NLCS1, PLSS 051040

MONUMENT FOUND.

FROM THE 1949 WENDEROTH REESTABLISHMENT OF THIS CORNER, A 1" I.D. IRON PIPE FOUND 6" BELOW GROUND AND 2 FT. SOUTH OF AN E-W WIRE FENCE.

ACCESSORIES FOUND:

NO EVIDENCE REMAINS OF THE O.B.T.

EVIDENCE OF THE TWO 1949 RENEWAL B.T.S. A 10" TWIN W. OAK, NOW THE LOW CUT, ROTTED AND OUT OF POSITION REMAINS. OF A SMALL OAK NO LONGER SHOWING BLAZES OR SCRIBING, THE POSSIBLE ROOT-HOLE OF WHICH AGREES WELL WITH THE RECORD BEARING AND DISTANCE

A 12" MAPLE NOW A 24" DIA. MAPLE WITH A FULLY HEALED DOUBLE BLAZE; BEARS N85°14'E, 109² FT. DISTANT (AS PER RECORD).

NEW ACCESSORIES:

FROM IRVINGS 1952 SURVEY FILED AS MT-70, A 1 1/4" DIA. DRILL ROD, WITH A

C.S. FILE ~~CS 67/46-10.~~

(9)
T305, R03W, PL 55051040 (CONT'D)

MUSHROOMED TOP, APPROX. 1" BELOW GROUND.

DRILL ROD IS LEANING BUT DISTANCE CHECKS TO NEAREST M 7-70 MONUMENTS

INDICATE NEAR CENTER OF MUSHROOMED TOP OF MONUMENT, AS STANDING, BEST REPRESENTS ITS RECORD SET POSITION.

THIS DRILL ROD BEARS $S 19^{\circ} 14' W$, 240⁵ FT. DISTANT (COMPUTED RECORD $S 19^{\circ} 14' W$, 240⁸ FT.)

THE NWCOR OF DLC 58, A 2¹/₂" DIA. BRASS CAP (APPROPRIATELY MARKED) ON A 1" DIA. IRON PIPE PROTRUDING 4" ABOVE GROUND; BEARS $S 89^{\circ} 41' W$, 82⁶ FT. DISTANT (AS PER M 7-70).

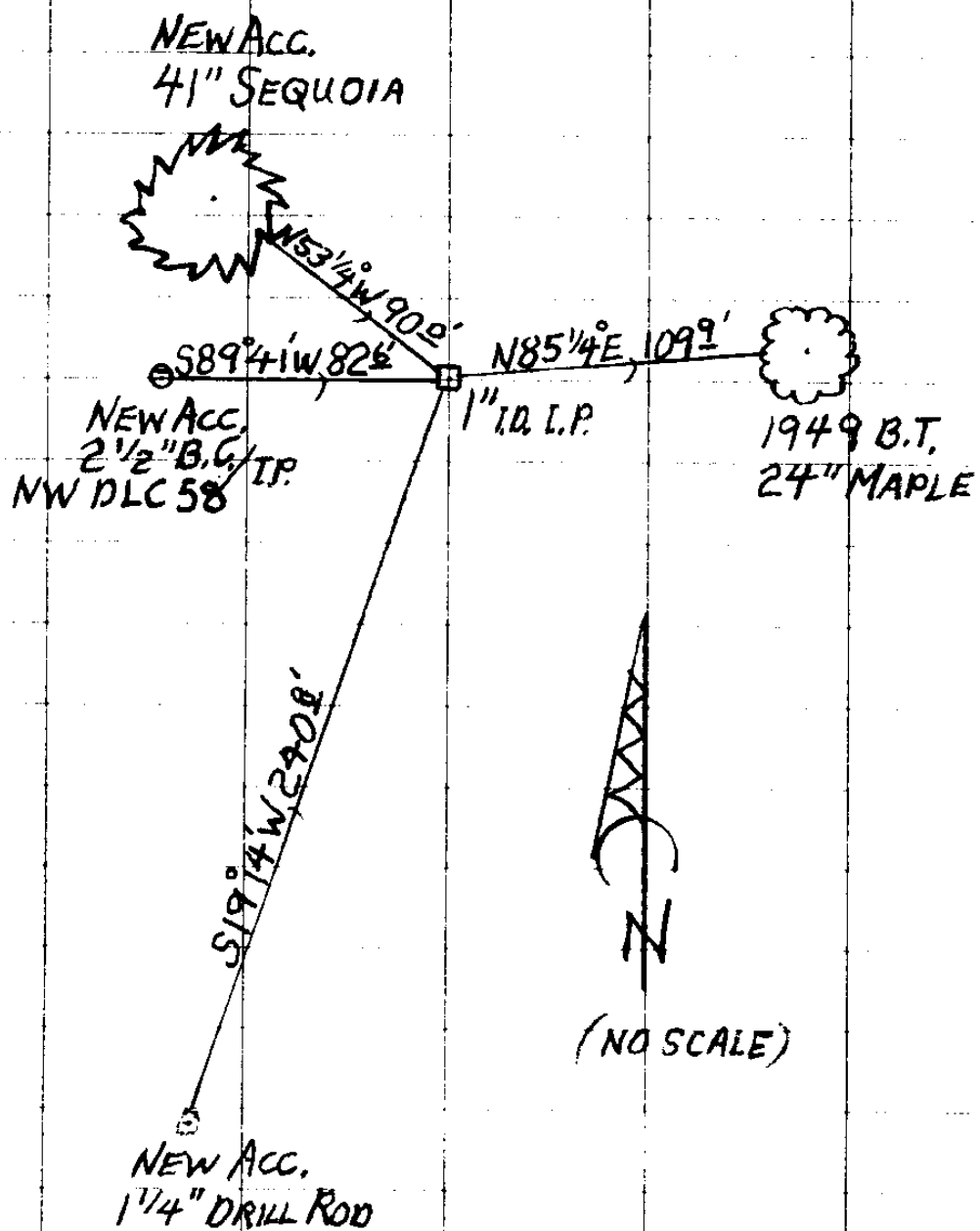
A 41" DIA. SEQUOIA GIGANTEA NOT BLAZED OR SCRIBED BUT HAVING A SIGN POSTED ON ITS WEST SIDE (MARKED "ED HYATT MEMORIAL"); BEARS $N 53^{\circ} 14' W$, 90⁰ FT. DISTANT.

ALL MEASURED BEARINGS BASED ON M 7-70 TIE BETWEEN NW DLC 58 AND SE DLC 51.

C.S. FILE 67/46-10

(3)
T30S, R05W, PLSS 051040 (CONT'D)

1949 I.P. MONUMENT IS ON FLAT, OPEN GROUND
WITH SCATTERED MAPLE, OAK AND FIR.



C.S. FILE 67/46-10

10/29/12

TOWNSHIP 30 RANGE 05 POINT IDENTIFIER # 051040

PRIMARY CORNER DESCRIPTION S SE Cor. Clark DLC #51

Alias _____	Description _____
Alias _____	Description _____
Alias _____	Description _____
Alias _____	Description _____

Original DLC survey by Bowman and Burnett under Contract date Sept. 24, 1855

Set a post in bottom prairie marked, from which
A Yellow wood 6" dia., bears N.80°W., 616 lks. 406 56

George J. Wenderoth, deputy Co. Surveyor - Frank Loso;
Charles Leiser - May 1949 - C.S. File 40/270

Set from measurement from SW Cor. and Interior L Corner.
Drive 1" Iron Pipe for corner.
Scribe - 10" Twin W.Oak N.55°E., 183.0 ft.
12" Maple N.85°15'E., 109.9 ft.

S 27° 35' 27" E
332° 24' 33" 347.77

178° 35' 06" 84.16
S 31° 24' 54" E

41" sequ. bears N 53 1/4° W 90° FT ED HYATT MEMORIAL

226.45

240.55 51 TO 1 BAR

1

C.S. FILE 67/86-10