

GOVERNMENT CORNER RESTORATION FORM
DOUGLAS COUNTY SURVEYOR

FILED
Date: 9-11-2018

By: SC

TOWNSHIP 30S RANGE 04W SECTION 17

PLSS/GCDB No. 30-04-044040

CORNER DESIGNATION: SE COR JOEL THORN DLC #44

Corner Form: _____

Field Notes: CS 67/45-6

CORNER HISTORY, PREVIOUS RENEWALS OR SURVEYS:

DOUGLAS COUNTY SURVEYOR

See DCSO Survey & Corner Records for PLSS 30-04-044040

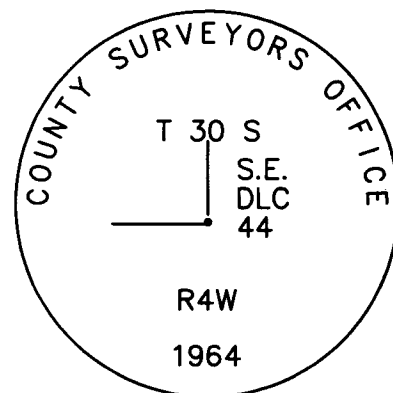
DATE: August 18, 2018

- Condition Report Only
- Not Found
- Renewed
- Unrecorded
- Surveyed In
- Referenced Out

MONUMENT DETAIL

MONUMENT FOUND (CONDITION AND SOURCE):

Found a 1 1/4" i.d. iron pipe by J. Byron in 1964 per C.S. File 53/26-46, loosely set and projecting 16" above the ground and leaning 0.8 ft. NNW with a 2 1/2" diam. brass cap marked as per detail:



I referenced and removed the BCIP and reset the monument 26" in the ground (now projecting 6" above the ground) in a stone collar.

ACCESSORIES FOUND (CONDITION, SOURCE & RECORD):

Bearing trees by J. Byron in 1964:

- An indistinct root hole bears S.5°W., 18.8 ft. with an uprooted 18"diam. x 30 ft. W. Oak snag with a rotted blaze alongside.
- A 15" W. Oak bears S. 21° E., 18.5 ft. with a healed blaze. (1994 USBLM Record S.22 1/2°E., 29 lks.)

Bearing tree by B. Siebold, USBLM Cadastral Surveyor, in 1994:

- A 12" W. Oak bears N. 7° W., 34.6 ft. with a healed single blaze (Rec. 51 lks.)

NEW ACCESSORIES:

From which new bearing trees:

- A 5" diam. Pear bears N. 23 3/4° E., 38.8 ft. scribed "X" "CSBT" on a double blaze.
- A 22" diam. D.fir bears S.13 1/2°W., 9.6 ft. which was marked by B. Siebold in 1994 as the S.E. bearing tree for the Crossing Closing Corner of the North-South centerline of the SE Quarter of Section 17 and the South line of DLC No. 44.

and a new reference monument:

A brass capped iron pipe bears S.89°55'32"W., 96 lks. (1994 USBLM Record) monumenting the Crossing Closing Corner of the North-South centerline of the SE Quarter of Section 17 and the South line of DLC No. 44.

LOCATION & COMMENTS:

The corner is located N.10°W., 4.9 ft. from a fence corner with woven wire fence extending south and west and approximately 150 ft. south of a rocked ranch road, at the top of the south cut bank of an old dirt road, course NW x SE, with mostly open field to the northwest and on the edge of forested lands to the south and east.

GEODETIC COORDINATES

LATITUDE:

LONGITUDE:

ELLIPSOID HEIGHT:

DATUM: NAD 83

SOURCE:

COMPASS DECLINATION: 15° E.

AGENCY:DCSO

PARTY CHIEF: S. J. Flause

WITNESSES: Jeff A. Lorsung

NOTES: Attached

REGISTERED
PROFESSIONAL
LAND SURVEYOR

OREGON
JULY 17, 1981
KRISTIAN O. DEGROOT
1941

RENEWAL DATE: 12-31-2019

CS 67/45-6