

GOVERNMENT CORNER RESTORATION FORM
DOUGLAS COUNTY SURVEYOR

Date: 9/10/2018 FILED

By: SC

Corner Form: CS 67/45-3

Field Notes: _____

DOUGLAS COUNTY SURVEYOR

DATE: JULY 27, 2018

- Condition Report Only
- Not Found
- Renewed
- Unrecorded
- Surveyed In
- Referenced Out

TOWNSHIP 28S RANGE 05W SECTION 04

PLSS/GCDB No. 28-05-340700

CORNER DESIGNATION: NORTH 1/4 SECTION 4 ONLY

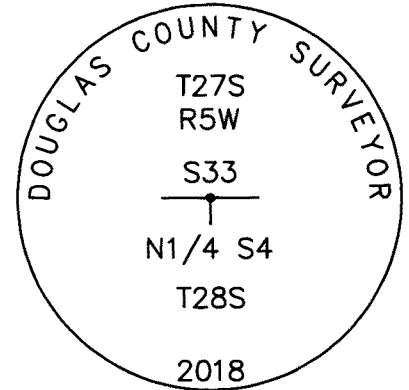
CORNER HISTORY, PREVIOUS RENEWALS OR SURVEYS:

- See DCSO Survey & Corner records for PLSS 28-05-340700
- The North 1/4 corner was restored by J. Byron in 1961 from an original bearing tree per C.S. File 49/64.

MONUMENT DETAIL

MONUMENT FOUND (CONDITION AND SOURCE):

- The 1961 brass cap was searched for and not found.



MONUMENT SET (PROCEDURES AND DESCRIPTION):

The original corner position is being restored from the C.S. File No. 49/64 bearing trees.
Set a 1" x 32" i.d. iron pipe 20" in the ground on solid rock in a 18" diam. x 11" high mound of stone with a 2 3/8" diam. brass cap marked as per monument detail:

ACCESSORIES FOUND (CONDITION, SOURCE & RECORD):

Bearing Trees by Byron in 1961 per C.S. File 49/64:

- A 23"x 53" double cedar bears N.23 3/4°E., 57.0 ft. with a healed blaze on the 23" trunk. (Rec. N.24°E.) (Note: distance is measured to a new nail in the root crown)
- 32" cedar bears S.58 3/4°W., 85.5 ft. with a healed blaze. (Rec. S.60°W.) (note: distance is measured to a new nail in the root crown)

And a reference monument by Byron in 1961 per C.S. File 49/64:

- A brass capped iron pipe, firmly set, projecting 10" above the ground, at the South 1/4 corner of Sec. 33, T.27S., R.5W. (PLSS 27-05-340100) bears S.88°56'25"W., 61.47 ft. (Rec. West, 92 lks.)

NEW ACCESSORIES:

- A 5" I. cedar bears S.36 1/2°E., 26.5 FT. scribed "X" "CSBT" on a double blaze.

LOCATION & COMMENTS:

All bearing trees have BT tags attached. All new bearing trees have double blazed faces with bearings measured to the center of the tree at the root crown and distances measured to the side and center of the root crown.

The corner falls on a moderate NW slope in scattered cedar-fir timber at a fence corner with East-West -South fence lines & 1.0 ft. West of an old cedar fence corner and 1.0 ft. North of a new treated 4"x4" fence post.

GEODETIC COORDINATES

LATITUDE:
LONGITUDE:
ELLIPSOID HEIGHT:
DATUM: NAD 83
SOURCE:

COMPASS DECLINATION: 15° E.

AGENCY:DCSO
PARTY CHIEF: S. J. FLAUSE
WITNESSES: J. LORSUNG
NOTES: ATTACHED

REGISTERED
PROFESSIONAL
LAND SURVEYOR

Kristian O. Degroot

OREGON
JULY 17, 1981
KRISTIAN O. DEGROOT
1941

RENEWAL DATE: 12-31-2019

CS 67/45-3

GOVERNMENT CORNER RESTORATION FORM

FILED

TOWNSHIP 28S RANGE 5W SEC. 4 PLSS # 340700

Date: 9/10/2018 By: XC
This survey consists of:

DOUGLAS COUNTY OREGON DATE 7-25-18

Map: _____

Corner Designation North 1/4 Section 4 only

Narrative: _____
Corner Rpt: CS 67 / 45-3

DOUGLAS COUNTY
SURVEYOR

Previous Renewals See PLSS 28-05-340700
Monument(s) Found: (Condition and Source)

- _____ Condition Report
- _____ Not Found
- _____ Renewed
- _____ Unrecorded
- _____ Surveyed In
- _____ Referenced Out

- Byron set a brass cap from an original BT in 1961 per CS 49/64

- The 1961 monument is now missing

- This renewal restores the corner from two 1961 BT's

MONUMENT DETAIL

1961 BCIP
MISSING

Accessories Found

Beaving trees by Byron in 1961:

- A 23" x 53" double cedar bears N 23 3/4° E, 570 ft. with healed blaze on the 23" trunk (Rec. N. 24° E)

- A 32" cedar bears S. 58 3/4° W, 855 ft w/ healed blaze (Rec S. 60° W)

RENEWAL

Monument Set (Procedure and Description)

A 1" x 32" i.d. iron pipe, 20" in the ground in a 18" diam. x 11" high mound of straw w/ a 2 3/8" diam brass cap marked:

Corner is restored from two 1961 BTs

MONUMENT DETAIL

DOUGLAS COUNTY SURVEYOR
T27S
R5W
S33
N 1/4 SA
T28S
2018

New Accessories

A NEW REF. MON'

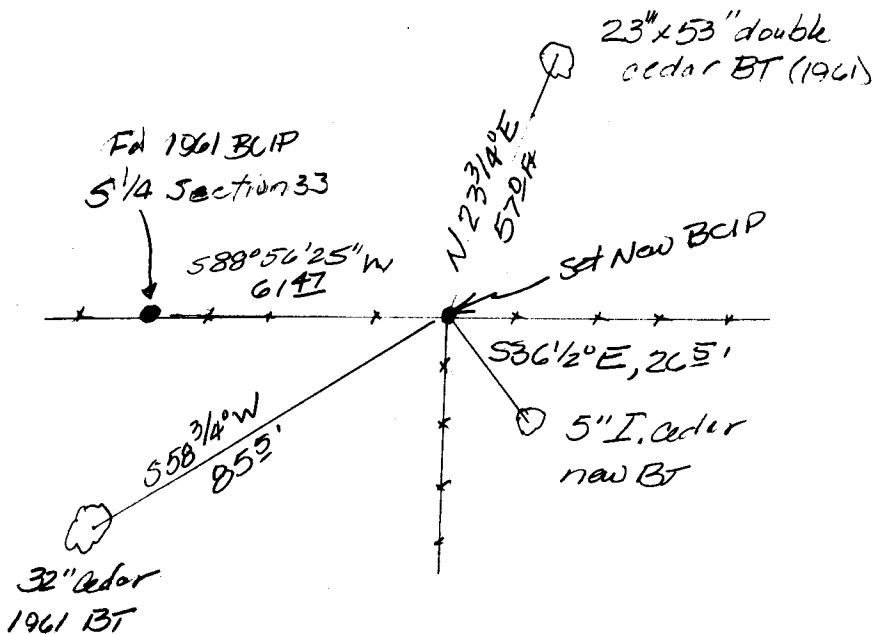
A BCIP at the S 1/4 of Sec. 33 T27S R5W bears S 88° 56' 25" W, 61.47 ft, firmly set, projecting 10" above the ground

A NEW BT:

A 5" I. cedar bears S 36 1/2° E, 26.5 ft scribed "X" "CBT" on a double blaze

Sketch of Monument, Accessories, and General Area

Location & Comments



Falls on a mod. NW Slope, 12 W, of old cedar fence post 5' 12" N. of a new 4x4 PT Post in E-W-S fence corner. Scattered fir-cedar ± 50' S. of timber

Comp. Decline. 15° E
Agency DCSO
Party Chief S. Plawec
Note keeper
Witnesses J. Loring

... Surveyor's Seal