

GOVERNMENT CORNER RESTORATION FORM  
DOUGLAS COUNTY SURVEYOR

TOWNSHIP 25S RANGE 06W SECTION 5 & 6 PLSS/GCDB No. 25-06-400440

CORNER DESIGNATION: 1/4 S6/S5

Date: 6/4/2018 FILED

By: X

Corner Form: CS 67/45-1

Field Notes: \_\_\_\_\_

DOUGLAS COUNTY SURVEYOR

CORNER HISTORY, PREVIOUS RENEWALS OR SURVEYS:

- CORNER WAS ESTABLISHED IN 1853 BY ELDER & GILE UNDER CONTRACT NO. 37
- RESTORED FROM ORIGINAL EVIDENCE BY M. GODFREY, DEPUTY COUNTY SURVEYOR, IN 1962 PER C.S. FILE 49/123. THE ORIGINAL CORNER POSITION FELL IN COON CREEK AND A WITNESS CORNER WAS ESTABLISHED 10 FEET SOUTH.

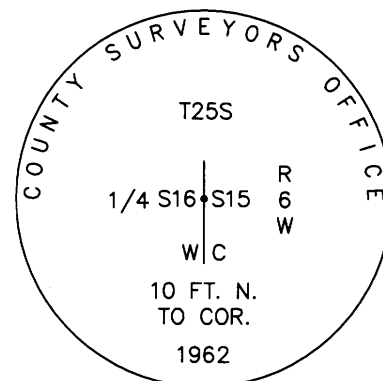
DATE: May 2, 2018

- Condition Report Only
- Not Found
- Renewed
- Unrecorded
- Surveyed In
- Referenced Out

MONUMENT FOUND (CONDITION AND SOURCE):

A 1 1/4" IRON PIPE, FIRMLY SET, PROJECTING 12" ABOVE THE GROUND WITH A 2 1/2" DIAMETER BRASS CAP MARKED AS PER MONUMENT DETAIL:

MONUMENT DETAIL



ACCESSORIES FOUND (CONDITION, SOURCE & RECORD):

BEARING TREES BY ELDER & GILE IN 1853:

- THE BLACK OAK STUMP RECOVERED BY GODFREY IN 1962 IS NOW OUT OF POSITION, HAVING ERODED INTO COON CREEK.

AND BEARING TREES BY GODFREY IN 1962:

- A 14" DIAM. MAPLE BEARS N.12°W., 16.0 FT. WITH AN OPEN BLAZE. (REC. 14.0 FT.), THE MOST SOUTHERLY TRUNK OF A MAPLE CLUMP GROWING OUT OF A VERTICAL STREAM BANK.

MONUMENT SET (PROCEDURES AND DESCRIPTION):

BRASS CAP APPEARS UNDISTURBED; DISCREPANT DISTANCE TO 1962 MAPLE BT MAY BE DUE TO THE UNUSUAL ROOT CROWN OF THE MAPLE CLUMP.

NEW ACCESSORIES:

NEW BEARING TREES:

- A 23" DIAM. B. OAK BEARS S.79°W., 60.9 FT. SCRIBED "X CS BT" ON A DOUBLE BLAZE. BT FALLS ON THE HIGH WESTERLY STREAM BANK OF COON CREEK MAKING FULL BLAZES AND SCRIBING IMPRACTICABLE.
- A 22" DIAM. W. OAK BEARS N.25°W., 43.2 FT SCRIBED "WC 1/4 S16 CS BT" ON A DOUBLE BLAZE. BT HAS A NORTH SOUTH FENCE WIRE EMBEDDED DEEPLY IN THE EAST HALF OF THE TREE TRUNK.

COMPASS DECLINATION: 15° E.

LOCATION & COMMENTS:

ALL BEARING TREES HAVE BT TAGS ATTACHED. ALL NEW BEARING TREES HAVE DOUBLE BLAZED FACES WITH BEARINGS MEASURED TO THE CENTER OF THE TREE AT THE ROOT CROWN AND DISTANCES MEASURED TO A NAIL IN THE SIDE AND CENTER OF THE ROOT CROWN UNLESS OTHERWISE NOTED.

AGENCY:DCSO

PARTY CHIEF: S. J. FLAUSE

WITNESSES: A. DEGROOT

NOTES: ATTACHED

CORNER FALLS ON THE TOP OF THE EASTERLY, OR LEFT, HIGH BANK OF COON CREEK ON THE INSIDE OF A STREAM CURVE, AN AREA THAT BECOMES AN ISLAND DURING HIGH WATER CONDITIONS. SEE SKETCH IN ATTACHED NOTES.

GEODETIC COORDINATES

LATITUDE:

LONGITUDE:

ELLIPSOID HEIGHT:

DATUM: NAD 83

SOURCE:

REGISTERED  
PROFESSIONAL  
LAND SURVEYOR

*Kristian O. Degroot*

OREGON  
JULY 17, 1981  
KRISTIAN O. DEGROOT  
1941

RENEWAL DATE: 12-31-2019

CS 67/45-1

①

MAY 2, 2018

T25S, R6W, W1/4 S15, PLSS 400440

## MONUMENT FOUND:

FROM THE 1962 DGSD RENEWAL A 2" DIA. BRASS CAP ON A 1" I.D. IRON PIPE, FIRMLY SET AND PROTRUDING 12" ABOVE GROUND.

THE BRASS CAP IS MARKED AS FOLLOWS:

" COUNTY SURVEYORS OFFICE "

T25S

1/4 S16 S15 R6

WC W

10 FT. N.

TO COR.

1962

## ACCESSORIES FOUND:

NO EVIDENCE OF ORIGINAL NE BEARING TREE REMAINS. EVIDENCE OF SW OBT, NOTED IN 1962 RENEWAL, IS NOW OUT OF POSITION HAVING FALLEN INTO COON CREEK,

DUE TO HIGH WATER EROSION. POSSIBLE B. OAK "SPROUT OF OLD BT" IS LOOSE IN STREAM BOTTOM BUT IN A POSITION THAT MAKES SEARCH FOR SCRIBING IMPRACTICAL.

T25S, R6W, PLSS 400440 (CONT'D) ②

THE NEW IN 1962, 5 INCH MAPLE, IN CLUMP, IS NOW A 14" DIA. MAPLE WITH AN OPEN BLAZE SCAR NEAR BASE (DUE TO LEAN OF TREE IT IS NOT OPENED TO 5" DIA. TO SEARCH FOR BLAZE OR SCRIBING). THIS TREE IS THE MOST SOUTHERLY TRUNK OF MULTI-TRUNKED CLUMP OF MAPLES. THE CENTER OF THE BASE OF DESCRIBED 14" DIA. MAPLE BEARS N12°W, 162 FT. DISTANT (RECORD N12°W, 140 FT.). CENTER OF ROOTCROWN FOR MAPLE CLUMP NOT DETERMINED BECAUSE ROOTS GROW OUT OF VERTICAL STREAM BANK.

BRASS CAP MONUMENT APPEARS UNDISTURBED; DISCREPANT DISTANCE TO FOUND MAPLE BT COULD BE DUE TO UNUSUAL ROOT CROWN OF MAPLE CLUMP.

## NEW ACCESSORIES:

A 23" DIA. BLACK OAK (STANDS AT EDGE OF HIGH WESTERLY STREAM BANK MAKING FULL BLAZES AND SCRIBING IMPRACTICAL) IS SCRIBED "X" "CSBT" ON A

③

T25S, R6W, PLSS 400440 (CONT'D)

HIGH-LOW BLAZE. THIS TREE BEARS S79°W, 609 FT. DISTANT.

A 22" W. OAK SCRIBED "WC 1/4 S16CS" "BT" ON A DOUBLE BLAZE; BEARS N25°W, 432 FT. DISTANT. THIS TREE HAS WIRE FROM AN OLD NORTH-SOUTH RUNNING FENCE EMBEDDED DEEPLY IN THE EAST HALF OF ITS TRUNK.

DISTANCES TO ALL B.T. MEASURED TO SET SIDE-CENTER NAILS

THE BRASS CAP MONUMENT IS ON THE TOP OF THE EASTERLY, OR LEFT, HIGH BANK OF COON CREEK. THE MONUMENT IS ON THE INSIDE OF A STREAM CURVE, AN AREA THAT BECOMES AN ISLAND DURING HIGH WATER CONDITIONS.

DECLINATION 15°E

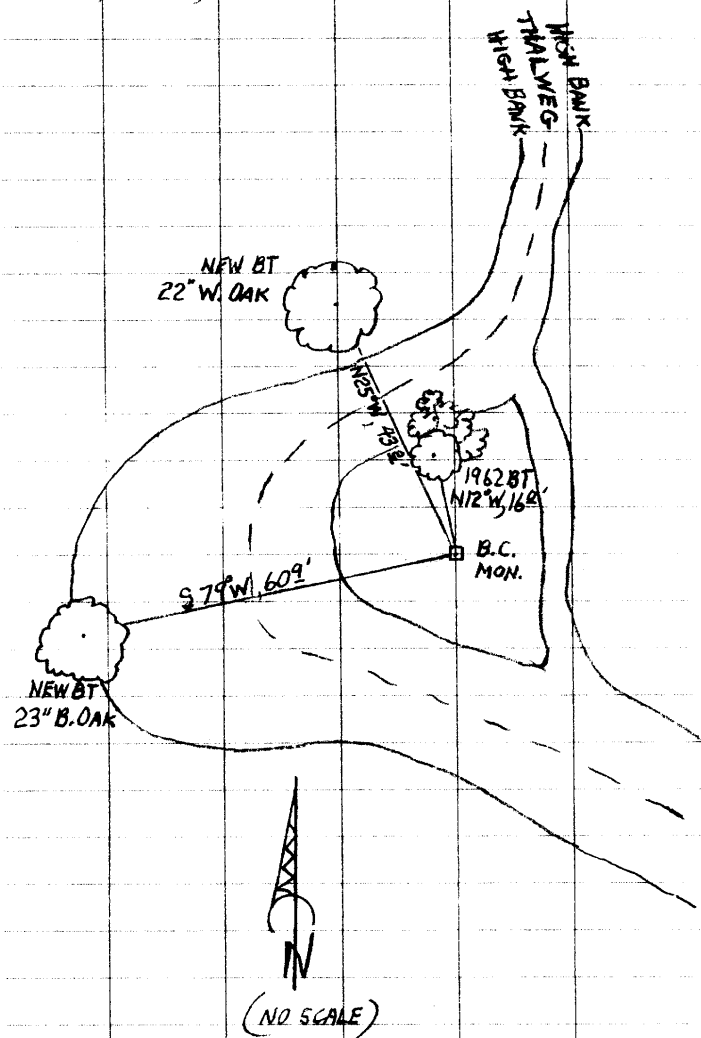
π STEPHEN J. FLAUSE

✓ Stephen John Flause

† ADAM DEGROOT

④

T25S, R6W, PLSS 400440 (CONT'D)



CS 67/45-1