

GOVERNMENT CORNER RESTORATION FORM
DOUGLAS COUNTY SURVEYOR

FILED
Date: 12/12/2017

By: JC

TOWNSHIP 25S RANGE 04W SECTION 02

PLSS/GCDB No. 25-04-520640

Corner Form: CS 67/44-7

CORNER DESIGNATION: CW 1/16 S2

Field Notes: 4 pgs

DOUGLAS COUNTY SURVEYOR

CORNER HISTORY, PREVIOUS RENEWALS OR SURVEYS:

- CORNER ESTABLISHED UNDER A MAY, 1914 SUBDIVISION OF SECTION 2 BY FRANK CAIN, DOUGLAS COUNTY SURVEYOR AS RECORDED IN SURVEY VOLUME 2, PAGES 256-257.

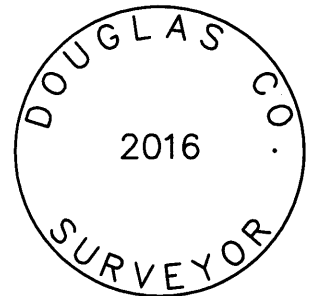
DATE: APRIL 15, 2016

Condition Report Only
 Not Found
 Renewed
 Unrecorded
 Surveyed In
 Referenced Out

MONUMENT DETAIL

MONUMENT FOUND (CONDITION AND SOURCE):

- NONE



ACCESSORIES FOUND (CONDITION, SOURCE & RECORD):

BEARING TREES BY CAIN IN 1914:

- A 38" DIA. x 5 FT. TALL CEDAR STUMP BEARS N. 89 1/2°E., 259.4 FT. WHICH IS OPENED TO REVEAL AN AXE NOTCH AND A BLAZED FACE WITH AN INTACT SCRIBED "6" AND SEVERAL OTHER ILLEGIBLE SCRIBE MARKS VISIBLE. (REC. N. 89 1/2°E., 393 LKS.)

MONUMENT SET (PROCEDURES AND DESCRIPTION):

AT A POINT S. 89 1/2°W., 259.4 FT. FROM THE ABOVE DESCRIBED ORIGINAL BEARING TREE, I SET A 5/8" x 30" IRON ROD 27" IN THE GROUND WITH A 1 1/2" DIA. ALUMINUM CAP MARKED AS NOTED ABOVE:

NEW ACCESSORIES:

- AN 18" DOUBLE TRUNK W. OAK BEARS N.02°E., 200.0 FT. SCRIBED "CW 1/16 S2 CS BT" ON THE SOUTHERLY TRUNK.
- A 7" DIA. I. CEDAR BEARS N.49 1/2°E., 105.1 FT. SCRIBED "CW 1/16 S2 CS BT".
- A 3" DIA. USGS BRASS DISC MARKED "H 60 1934" SET IN THE TOP OF A 1 1/2 FT. x 2 FT. x 2 1/2 FT. ROCK OUTCROP BEARS S.23°50'00"E., 275.23 FT.

COMPASS DECLINATION: 15° E.

LOCATION & COMMENTS:

BASIS OF BEARINGS: N.89°48'28"W. 643.41' PER PP 2008-0061F BETWEEN 1968 CO. RD. NO. 19 R/W MONUMENTS(SHEET 3 OF 9 = PG. 09931059) @ 35' LT. OF 45+50 & 51+93.32. EQUIPMENT: NIKON DTM 520
ALL BEARING TREES HAVE BT TAGS ATTACHED. ALL NEW BEARING TREES HAVE DOUBLE BLAZED FACES WITH BEARINGS MEASURED TO THE CENTER OF THE TREE AT THE ROOT CROWN AND DISTANCES MEASURED TO THE SIDE AND CENTER OF THE ROOT CROWN UNLESS OTHERWISE NOTED.
CORNER FALLS ON A MODERATE SOUTH SLOPE 1.6 FT. NORTH OF A PARTLY FALLEN EAST-WEST WIRE FENCE LINE IN OPEN PASTURE LAND SURROUNDED BY MIXED FOREST.

AGENCY:DCSO

PARTY CHIEF: S. J. FLAUSE

WITNESSES: M. KOCH

NOTES: ATTACHED

GEODETIC COORDINATES

LATITUDE:

LONGITUDE:

ELLIPSOID HEIGHT:

DATUM: NAD 83

SOURCE:

REGISTERED
PROFESSIONAL
LAND SURVEYOR

Kristian O. Degroot

OREGON
JULY 17, 1981
KRISTIAN O. DEGROOT
1941

RENEWAL DATE: 12-31-2017

(1)

APRIL 15, 2016

T25S, R04W, CW1/16 S2, PLSS 520640

THIS 1/16 CORNER WAS ESTABLISHED BY A SURVEY IN 1914 CONDUCTED BY THE COUNTY SURVEYOR USING FOUND 1855 G.L.O. SECTION CORNER MONUMENTS.

NO MONUMENT WAS FOUND AT THE CORNER LOCATION.

ACCESSORIES FOUND:

ONE O.B.T., A 20" CEDAR, NOW A 38" DIA., 5 FT. TALL CEDAR STUMP WHICH IS OPENED TO REVEAL AN AXE NOTCH AND A BLAZE FACE WITH AN INTACT SCRIBED "6" AND SEVERAL OTHER, NOW ILLEGIBLE, SCRIBE MARKS.

NO EVIDENCE REMAINS OF THE OAK O.B.T.

MONUMENT SET:

MEASURING THE ORIGINAL REVERSE BEARING AND DISTANCE, S89 1/2° W, 259 ± FT, FROM THE FOUND CEDAR O.B.T. WE SET A 5/8" DIA., 30" LONG IRON ROD WITH A 1 1/2" DIA. ALUMINUM CAP CS 67/44-7A

(3)

T25S, R04W, PLSS 520640 (CONT'D)

THE I.R./A.L.G. MONUMENT IS IN OPEN PASTURE LAND SURROUNDED BY MIXED WOODS ON A MODERATE SOUTH SLOPE. A PARTLY FALLEN, EAST-WEST RUNNING WIRE FENCE IS SOUTH, 1 1/2 FEET FROM THE CORNER MONUMENT.

T S.J. FLAUSE
† M.S. KOCH
M Stephen John Flause

CS 67/44-7C

(2)

T25S, R04W, PLSS 520640 (CONT'D)

PROTRUDING 3" ABOVE GROUND, THE ALUMINUM CAP IS MARKED AS FOLLOWS:
"DOUGLAS CO. SURVEYOR"
2016

NEW ACCESSORIES:

AN 18" DIA. DOUBLE TRUNK W. OAK SCRIBED ON ITS SOUTHERLY TRUNK "CW 1/16 S2 C.S." "BT" ON A DOUBLE BLAZE; BEARS N02° E, 200 ± FT. DISTANT.

A 7" DIA. I CEDAR SCRIBED "CW 1/16 S2" "CS BT" ON A DOUBLE BLAZE; BEARS N49 1/2° E, 105 ± FT. DISTANT.

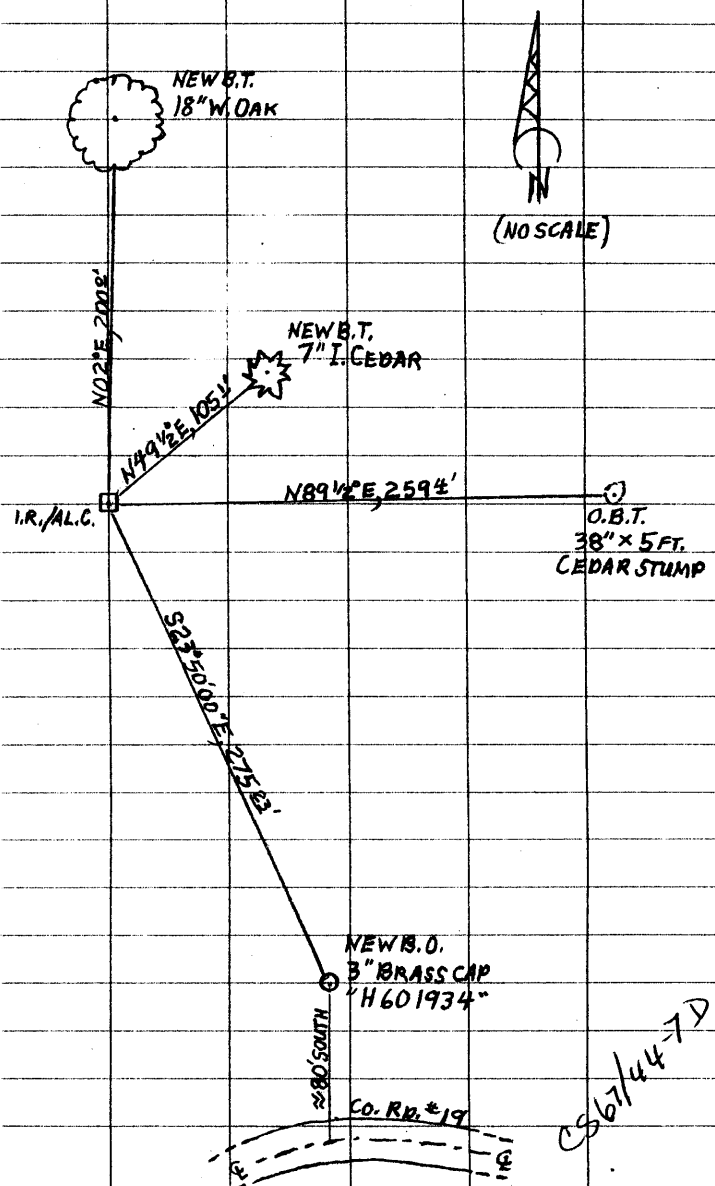
A 3" DIA. ^{U.S.G.S} G.L.O. BENCHMARK BRASS CAP WITH ADDED MARKS "H 60 1934" SET IN THE TOP OF A 1 1/2 FT. X 2 FT. X 2 1/2 FT. TALL ROCK OUTCROP; BEARS S23° 50' 00" E, 275 ± FT. DISTANT.

BEARINGS USED TO SET CORNER MONUMENT AND DEFINE NEW ACCESSORY LOCATIONS ARE BASED ON A TIE FROM THE DOUGLAS COUNTY RD. DEPT. 1968 SURVEY PROJECT ON RD. #19, SHEET 3 OF 9.

CS 67/44-7B

(4)

T25S, R04W, PLSS 520640 (CONT'D)



CS 67/44-7D