

GOVERNMENT CORNER RESTORATION FORM
DOUGLAS COUNTY SURVEYOR

TOWNSHIP 24S RANGE 04W SECTION 35

PLSS/GCDB No. 24-04-540100

TOWNSHIP 25S RANGE 04W SECTION 2

PLSS/GCDB No. 25-04-540700

CORNER DESIGNATION: 1/4 S35/S2

FILED
Date: 12-12-2017

By: SC

Corner Form: CS 67/44-4

Field Notes: 4 pgs

DOUGLAS COUNTY SURVEYOR

CORNER HISTORY, PREVIOUS RENEWALS OR SURVEYS:

- SEE DCSO SURVEY & CORNER RECORDS FOR PLSS 24-04-540100 OR PLSS 25-04-540700

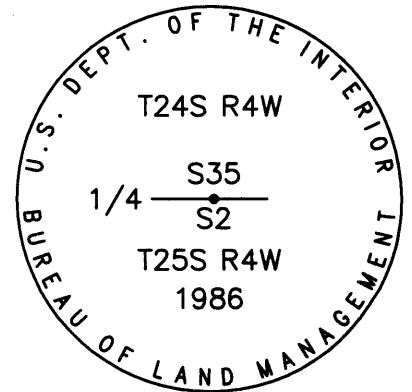
DATE: MARCH 31, 2016

- Condition Report Only
- Not Found
- Renewed
- Unrecorded
- Surveyed In
- Referenced Out

MONUMENT DETAIL

MONUMENT FOUND (CONDITION AND SOURCE):

A 2 1/2" DIA. IRON POST, FIRMLY SET, PROJECTING 3" ABOVE THE GROUND IN A N-S FENCE LINE WITH A 3 1/4" DIA. BRASS CAP MARKED:



ACCESSORIES FOUND (CONDITION, SOURCE & RECORD):

BEARING TREES BY F.J. COLE, DEPUTY COUNTY SURVEYOR IN 1914 PER F.B. 39, PG. 34:

- A 22" DIA. x 24" TALL ROTTED CEDAR STUMP BEARS S.70° W., 37.6 FT. WITH A PREVIOUSLY OPENED & NOW COMPLETELY ROTTED BLAZE .
- A 36" DIA. x 30" TALL ROTTED FIR STUMP BEARS N.56 3/4°W., 44.2 FT. WITH A PREVIOUSLY OPENED & NOW COMPLETELY ROTTED BLAZE .

AND A BEARING OBJECT BY M 97-62:

- A 1/2" IRON ROD, FIRMLY SET, PROJECTING 4" ABOVE THE GROUND BEARS N.17 1/4°E., 22.8 FT. THIS MONUMENT WAS SET AS THE PROPORTIONED QUARTER CORNER PER M 97-62 BUT NOT NOTED OR ACCEPTED UNDER THE 1986 USBLM DEPENDENT RESURVEY. THE M 97-62 BEARING TREES WERE FOUND BUT NOT TIED.

AND BEARING TREES BY ROGERS & PETERSON, USBLM CADASTRAL SURVEYORS, IN 1986:

- A 16" DIA. D. FIR BEARS S.01°E., 11.9 FT. WITH A HEALED DOUBLE BLAZE.
- A 15" DIA. D. FIR BEARS N.08°W., 3.6 FT. WITH A HEALED DOUBLE BLAZE

MONUMENT SET (PROCEDURES AND DESCRIPTION): NONE

A NEW BEARING TREE:

- A 17" DIA. D. FIR BEARS S.79 1/2°W., 10.9 FT. SCRIBED "1/4 S2 CS BT".

LOCATION & COMMENTS:

ALL BEARING TREES HAVE BT TAGS ATTACHED. ALL NEW BEARING TREES HAVE DOUBLE BLAZED FACES WITH BEARINGS MEASURED TO THE CENTER OF THE TREE AT THE ROOT CROWN AND DISTANCES MEASURED TO THE SIDE AND CENTER OF THE ROOT CROWN.

THE CORNER FALLS ON A MODERATE WESTERLY SLOPE IN AND OLD FIR AND CEDAR REPROD. FOREST. SEE SKETCH MAP IN THE ATTACHED NOTES.

GEODETIC COORDINATES

LATITUDE:
LONGITUDE:
ELLIPSOID HEIGHT:
DATUM: NAD 83
SOURCE:

COMPASS DECLINATION: 15° E.

AGENCY:DCSO
PARTY CHIEF: S. J. FLAUSE
WITNESSES: M. KOCH
NOTES: ATTACHED

REGISTERED
PROFESSIONAL
LAND SURVEYOR

Kristian O. Degroot

OREGON
JULY 17, 1981
KRISTIAN O. DEGROOT
1941

CS 67/44-4

RENEWAL DATE: 12-31-2017

(1)

3/31/16

T24S, R04W, S1/4 S35, PLSS 540100

MONUMENT FOUND:

FROM THE 1986 BLM DEPENDENT RESURVEY, A 3 1/4" DIA BRASS CAP ON A 2" I.D. IRON PIPE SET PLUMB AND PROTRUDING 3" ABOVE GROUND IN A N-S FENCELINE. THE B.C. IS MARKED AS FOLLOWS:

" U.S. DEPT. OF THE INTERIOR "

T24S R4W

1/4 S35
S2

T25S R4W

BUREAU OF LAND MANAGEMENT

ACCESSORIES FOUND:

NO EVIDENCE OF 1855 O.B.T.'S.

FROM THE 1914 DCSD SURVEY (BASIS FOR THE 1986 BLM CORNER POSITION) EVIDENCE OF THE TWO RENEWAL BEARING TREES.

A CEDAR 14" NOW A 22" DIA. 2 FT TALL ROTTED CEDAR STUMP WITH PREVIOUSLY OPENED BUT NOW COMPLETELY ROTTEN AWAY BLAZE; BEARS
CS 67144-4A

(2)

T24S, R04W, PLSS 540100 (CONT'D)

S70°W, 37 1/2 FT. DISTANT (BEARING AND DIST. AGREE WITH 1986 BLM RECORD).

A FIR 18" NOW A 36" DIA. 2 1/2 FT. TALL ROTTED FIR STUMP WITH A PREVIOUSLY OPENED BUT NOW COMPLETELY ROTTEN AWAY BLAZE; BEARS N56 3/4° W, 44 1/2 FT. DISTANT (AGREES WITH 1986 BLM RECORD).

FROM THE 1974 BARBER SURVEY (DCSD FILE M 97-62) A MONUMENT SET TO REPRESENT THE 1/4 COR. POSITION BUT NOT ACCEPTED AS SUCH AND NOT FOUND IN THE 1986 BLM DEPENDENT RESURVEY. THIS MONUMENT IS A 1/2" DIA. IRON ROD, SET PLUMB, PROTRUDING 4" ABOVE GROUND AND BEARS N17 1/4° E, 22 1/2 FT. DISTANT.

THE TWO FIR BEARING TREES FOR THIS BARBER COR. ARE ALIVE AND SHOW CLEAR BLAZE SCARS. THE CEDAR B.T. IS UPROOTED AND ROTTEN. THE COMPUTED RELATIONSHIP BETWEEN THESE B.T.'S AND THE BLM BRASS CAP WAS NOT VERIFIED BY FIELD MEASUREMENT (HOWEVER A DISTANCE CHECK

CS 67144-4B

(3)

T24S, R04W, PLSS 540100 (CONT'D)

BETWEEN BARBER'S SE FIR B.T. AND THE BRASS CAP MONUMENT AGREED WITH THE COMPUTED DISTANCE).

FROM THE 1986 BLM DEPENDENT RESURVEY THE TWO NEW B.T.'S.
A FIR 11" DIA. NOW A 16" DIA. D. FIR WITH A FULLY HEALED DOUBLE BLAZE; BEARS S01°E, 11 1/2 FT. DISTANT (AS PER RECORD).
A FIR 11" DIA. NOW A 15" DIA. D. FIR WITH A FULLY HEALED DOUBLE BLAZE; BEARS N08°W, 3 1/2 FT. DISTANT (AS PER RECORD).

NEW ACCESSORIES:

A 17" DIA. D. FIR SCRIBED "1/4 S 2"
"CSBT" ON A DOUBLE BLAZE; BEARS
S79 1/2° W, 10 1/2 FT. DISTANT.
(DECLINATION 15° EAST)

MONUMENT IS ON MODERATE WEST'LY SLOPE IN OLD FIR AND CEDAR REPROD. FOREST.

T. S.J. FLAUSE

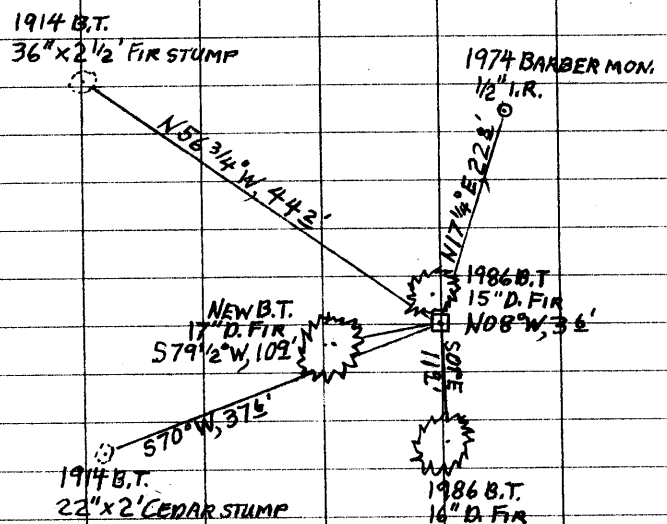
† M.G. KOCH

M Stephen John Flause

CS 67144-4C

(4)

T24S, R04W, PLSS 540100 (CONT'D)



(NO SCALE)

CS 67144-4D