

**GOVERNMENT CORNER RESTORATION FORM
DOUGLAS COUNTY SURVEYOR**

TOWNSHIP 21S RANGE 04W SECTION 19, 20, 29, 30 PLSS/GCDB No. 21-04-200300

CORNER DESIGNATION:

S19	S20
S30	S29

FILED
Date: 10-19-2017
By: SC
Corner Form: CS 67/96-3
Field Notes: _____
DOUGLAS COUNTY SURVEYOR

CORNER HISTORY, PREVIOUS RENEWALS OR SURVEYS:

- ORIGINAL CORNER ESTABLISHED BY GORDON & GARDNER IN 1855.
- RENEWED BY O.F. THIEL IN 1901 PER FIELD BOOK 113, PG. 109.
- RESTORED BY F.C. FREAR IN 1938 PER C.S. FILE 15/14.
- RESTORED BY FOLLETT & FORD IN 1950 PER C.S. FILE 40/289.
- RESTORED BY B.A. SHANER IN 1962 PER R.M. 2-17.
- RESTORED BY R.G. DEAN IN 1984 PER M 96-40 & C.S. FILE 58/204.
- RESTORED BY L. ROBERTS IN 1989 PER M 108-12 & C.S. FILE 63/85.
- RENEWED BY S.J. FLAUSE, DCSO, IN 2006 PER C.S. FILE 67/14-17.
- THE CORNER WAS FOUND AND HELD OR COMPUTED FROM REFERENCES UNDER 16 OTHER RECORDED SURVEYS, SEE DCSO SURVEY RECORDS.

DATE: 5-2-17 & 7-17-17

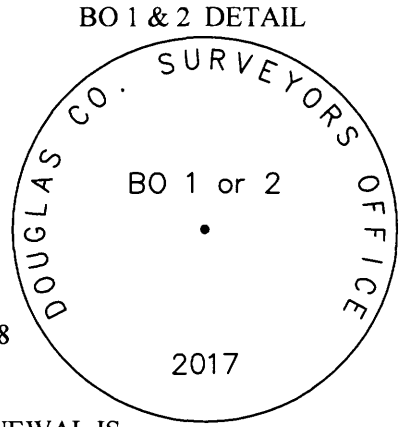
Condition Report Only
 Not Found
 Renewed
 Unrecorded
 Surveyed In
 Referenced Out

MONUMENT FOUND (CONDITION AND SOURCE):

NONE, THIS SECTION CORNER FALLS IN THE EASTBOUND LANE OF BEAR CREEK ROAD & HAS BEEN RE-MONUMENTED IN 1938, 1950, 1962, 1984 & 1989. THE 3/4" IRON ROD REFERENCE MONUMENT PER M 96-40 IS NOW MISSING.

MONUMENT SET (PROCEDURES AND DESCRIPTION):

THE CORNER POSITION PER CS 58/269 & M 96-40 AND DCSO CORNER POSITION AS RENEWED IN 2006 PER CS FILE 67/14-17 DO NOT MATCH THE 1938, 1950, 1962 AND 1989 CORNER RENEWALS OF THE ORIGINAL CORNER POSITION. THE CORNER POSITION SET FORTH UNDER M 79-7, M 80-23, M 80-24, M 80-25, M 130-38 AND M 134-42 ARE IN SUBSTANTIAL AGREEMENT AND MATCH THE RM 2-17 RENEWAL AND THE M 28-44 RECOVERY AND ARE ACCEPTED AS THE BEST AVAILABLE EVIDENCE OF THE ORIGINAL CORNER POSITION. THIS CORNER RENEWAL IS COMPUTED FROM COORDINATE DATA PER M 130-38 AND DCSO TIES TO FOUND MONUMENTS AS NOTED.



- NO NEW MONUMENT IS SET UNDER THIS CORNER RESTORATION.
- A 5/8" IRON ROD PER CS FILE 58/269 AT THE SE CORNER OF PARCEL 1, M 94-38 BEARS N.43°46'38"W., 561.98 FT. (COMPUTED M 94-38 REC. N.41°30'48"W., 561.32')
- A 3/4" IRON ROD PER M 28-44 ON THE EAST R/W LINE OF CURTIN PARK ROAD BEARS N.32°22'41"W., 541.52 FT. (COMPUTED M 28-44 REC. N.30°03'30"W., 541.46')
- A 3/4" IRON ROD PER M 28-44 AT THE NE CORNER OF PARCEL 1, M 94-38 BEARS N.34°09'07"W., 588.38 FT. (COMPUTED M 28-44 REC. N.31°50'05"W., 588.30 FT.)
- A 1"x1" T-IRON BY W. HAINES PER M 22-25 BEARS N.29°29'54"W., 480.61 FT. (REC. N.27°50'W., 478.5 FT.)
- THE 2006 DCSO CORNER POSITION PER CS 67/14-17 BEARS N.63°31'31"E., 1.10 FT.
- THE CS 58/269 & M 96-40 CORNER POSITION BASED ON A FOUND PK NAIL (NOT OF RECORD) BEARS N.85°02'36"W., 1.04 FT.

ACCESSORIES FOUND (CONDITION, SOURCE & RECORD):

- A BEARING TREE BY S.J. FLAUSE, DCSO, IN 2006 PER CS FILE 67/14-17:
- A 36" DIAM. W. OAK BEARS N.33°30'E., 319.8 FT. TO A NEW 8" SPIKE IN THE ROOT CROWN WITH A HEALED DOUBLE BLAZE. (REC. N.35 3/4°E., 318.8 FT)
- BEARING OBJECTS BY S.J. FLAUSE, DCSO, IN 2006 PER CS FILE 67/14-17:
- ODOT LIGHT POLE #378 BEARS N.61 1/2°E., 103.5 FT. TO CENTER (REC. N.64°E., 102.4 FT.)
 - ODOT LIGHT POLE #370 BEARS N.34 3/4°W., 184.0 FT. TO CENTER (REC. N.32 1/2°W. 184.2 FT.)
 - A 5/8" IRON ROD PER CS FILE 58/269 BEARS N.77°45'19"W., 571.36' (CS FILE 67/14-17 REC. 1/2" IRON ROD N.75 1/2°W., 572.2 FT.)

NEW ACCESSORIES:

- THE CENTER PUNCHED 7/8" BOLT ON THE SW CORNER OF THE BASE OF ODOT LIGHT POLE #378 BEARS N.61°28'57"E., 102.86 FT.
- THE CENTER PUNCHED 7/8" BOLT ON THE SE CORNER OF THE BASE OF ODOT LIGHT POLE #370 BEARS N.34°41'21"W., 183.51 FT.
- A 2 1/2" BRASS DISC MARKED "BO 1" BEARS N.54°42'44"E., 193.76 FT. SET IN THE SW CORNER OF A 5'x5' ODOT CONCRETE SIGN POST SLAB
- A 2 1/2" BRASS DISC MARKED "BO 2" BEARS S.19°32'53"E., 21.45 FT. SET IN THE NW CORNER OF A 5'x5' ODOT CONCRETE SIGN POST SLAB.

COMPASS DECLINATION: 15° E.

AGENCY:DCSO
PARTY CHIEF: S. J. FLAUSE
WITNESSES: M. KOCH
NOTES: ATTACHED

LOCATION & COMMENTS:

CORNER FALLS APPROXIMATELY 250 FT. EAST OF I-5 IN THE EASTBOUND TRAVEL LANE OF BEAR CREEK ROAD AT THE I-5 CURTIN LORANE EXIT NO. 163.

GEODETTIC COORDINATES

LATITUDE:
LONGITUDE:
ELLIPSOID HEIGHT:
DATUM: NAD 83
SOURCE:

REGISTERED
PROFESSIONAL
LAND SURVEYOR



OREGON
JULY 17, 1981
KRISTIAN O. DEGROOT
1941

RENEWAL DATE: 12-31-2017

C.S. FILE 67/44-3
4

REGISTERED
PROFESSIONAL
LAND SURVEYOR

Kristian O. Degroot

OREGON
JULY 17, 1981
KRISTIAN O. DEGROOT
1941

RENEWAL DATE: 12-31-2017

CORNER RENEWAL SKETCH MAP

S19|S20
S30|S29
T.21S. R.4W. PLSS 200300
OCTOBER, 2017

FILED
Date: 10-19-2017 By: JC
This survey consists of:
Map: _____
Narrative: _____
Corner Ref: CS 67/44-3

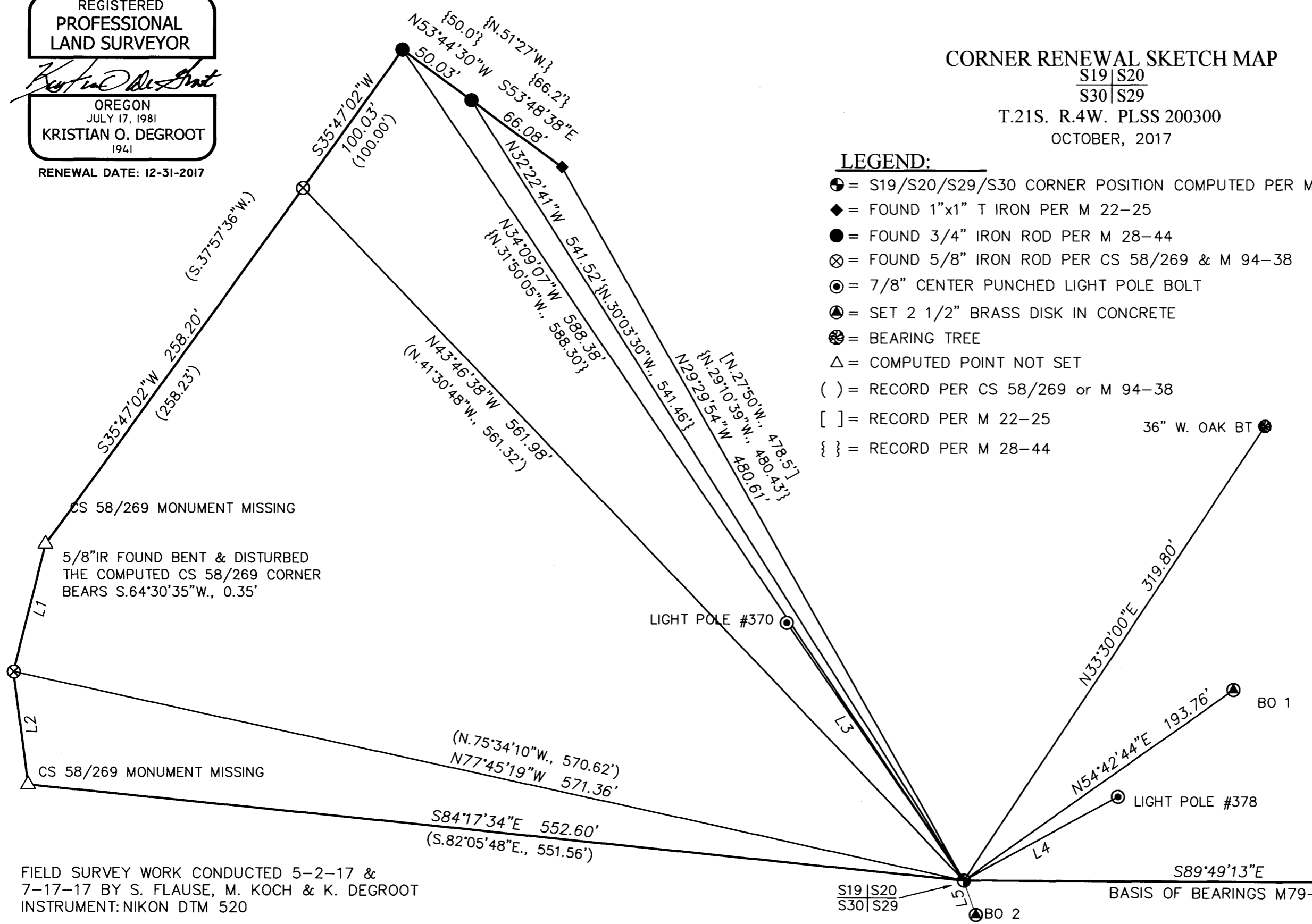
DOUGLAS COUNTY
SURVEYOR

LEGEND:

- = S19/S20/S29/S30 CORNER POSITION COMPUTED PER M 130-38
- ◆ = FOUND 1"x1" T IRON PER M 22-25
- = FOUND 3/4" IRON ROD PER M 28-44
- ⊗ = FOUND 5/8" IRON ROD PER CS 58/269 & M 94-38
- ⊙ = 7/8" CENTER PUNCHED LIGHT POLE BOLT
- ▲ = SET 2 1/2" BRASS DISK IN CONCRETE
- ⊗ = BEARING TREE
- △ = COMPUTED POINT NOT SET
- () = RECORD PER CS 58/269 or M 94-38
- [] = RECORD PER M 22-25
- { } = RECORD PER M 28-44



SCALE: 1" = 60'



NO.	BEARING	DISTANCE
L1	S14°05'32"W	77.62
L2	S7°35'58"E	66.66
L3	N34°41'21"W	183.51
L4	N61°28'57"E	102.86
L5	N19°32'53"W	21.45

FIELD SURVEY WORK CONDUCTED 5-2-17 &
7-17-17 BY S. FLAUSE, M. KOCH & K. DEGROOT
INSTRUMENT: NIKON DTM 520

THE 2006 DCSO CORNER POSITION PER CS 67/14-17
BEARS N.63°31'31"E., 1.10' FROM THIS RESTORED CORNER POSITION
THE CORNER POSITION BY L. OLSON PER CS 58/269 & RENEWED
BY R. DEAN PER M 96-40 BEARS N.85°02'36"W., 1.04'

FILE: 21-04-200300_RoS.dwg

C.S. FILE 67/44-3

DOUGLAS COUNTY SURVEYOR
ROOM 105 JUSTICE BLDG.
1036 S.E. DOUGLAS AVE.
ROSEBURG, OREGON 97470
PHONE (541) 440-4272

1	10000.08249779	20001.09258297	500	19/20/29/30
2	10055.03636988	19451.22840547	500	COMP
3	10121.11088330	19442.41283538	500	calc point
4	10196.39491528	19461.31201336	500	COMP
5	10405.85681603	19612.29118378	500	5/8IR_CS58/269
36	10094.94393468	20277.50267515	500	1"Triangular Steel
37	10266.75918369	20177.60203087	500	BT_36"W.OAK
300	10121.26151856	19442.72878595	500	5/8IR_CS58/269
600	10487.00121862	19670.77969431	500	3/4IR_M28-44
800	10457.41489980	19711.11799606	500	3/4IR_M28-44
900	10418.39763608	19764.44873391	500	T-IRON_M22-25
1000	9990.53636990	20009.79992807	500	PK
1001	10049.44900910	20092.09834741	500	CTRPPPL
1002	10049.18871524	20091.46924875	500	EDIMP
1003	10151.21811133	19896.14315247	500	CTRPPPL
1004	10150.97499205	19896.65204974	500	WDIMP
2000	10112.01480275	20159.25103740	500	BO1
2001	9979.86885785	20008.26971752	500	BO2
2002	10264.57145950	20176.10309025	500	BT-BRG
2003	10265.91868817	20178.88889042	500	BT-DIST

C.S. FILE 67/44-3
c