

GOVERNMENT CORNER RESTORATION FORM

FILED

TOWNSHIP 24 S RANGE 04 W SEC. 15 PLSS # 046650

Date: 11-24-2015 By: JC

This survey consists of:

DOUGLAS COUNTY OREGON

DATE MARCH 10, 2015

Map: \_\_\_\_\_

Narrative: \_\_\_\_\_

Corner Rpt: CS 67/42-18

Corner Designation

DOUGLAS COUNTY SURVEYOR

INT SE

DLC 46

- \_\_\_ Condition Report
- \_\_\_ Not Found
- Renewed
- \_\_\_ Unrecorded
- \_\_\_ Surveyed In
- \_\_\_ Referenced Out

Previous Renewals PROPORTIONED IN, 1982  
Monument(s) Found: \_\_\_\_\_ (Condition and Source)

FROM BENTZ 1982 SURVEY (M91-2) A 5/8 INCH DIAMETER IRON ROD, TOP OF ROD FLUSH WITH GROUND BUT BENT APPROX. 1 FOOT EAST FROM LOWER PORTION OF ROD WHICH IS STILL PLUMB.

N/A

MONUMENT DETAIL

Accessories Found

(ACCESS MEASURED FROM PLUMB PORTION OF 5/8 INCH I.R. (ABOVE))

ONE 1982 BENTZ BT:  
AN 18" OAK, NOW A ROTTEN AND BURNED 15 INCH DIAM. X 5 FOOT TALL OAK STUMP SHOWING A BURNED BLAZE HEAL WHICH IS OPENED TO FIND CLEAR BUT FRAGMENTARY REVERSE SCRIBING. THIS STUMP BEARS N88°E, 26 1/2 FEET DISTANT (AS PER RECORD).

FENCES IN AREA HAVE BEEN REBUILT; DESCRIBED FENCE CORNER IN 1982 RENEWAL NO LONGER EXISTS.

RENEWAL

Monument Set (Procedure and Description)

MONUMENT DETAIL

REFERENCE PLUMB PORTION OF FOUND 5/8 INCH I.R. REMOVE ROD FROM GROUND AND STRAIGHTEN, RESET 5/8 I.R. AT REFERENCE POSITION TO NOW PROTRUDE PLUMBLY 5 INCHES ABOVE GROUND.

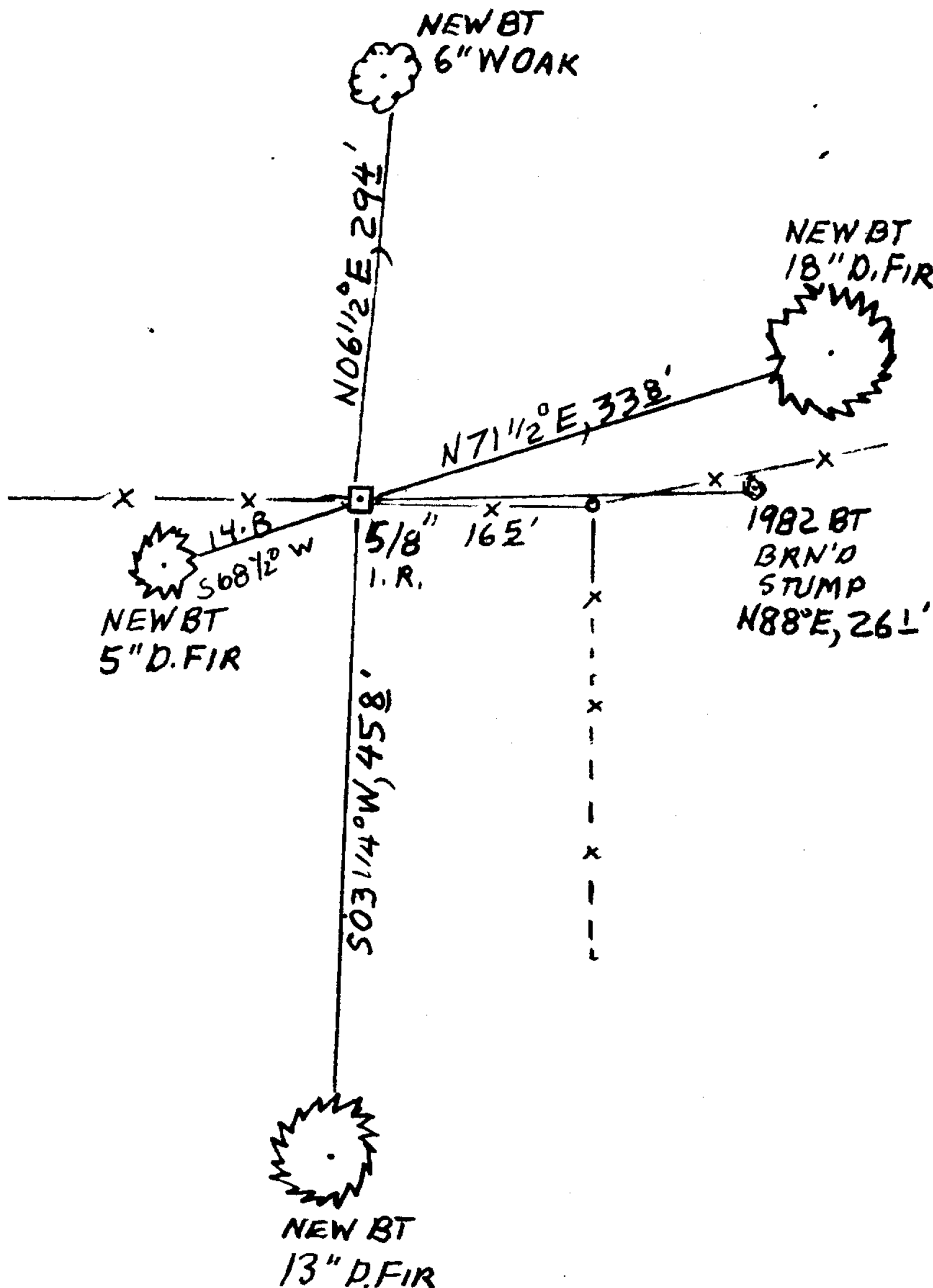
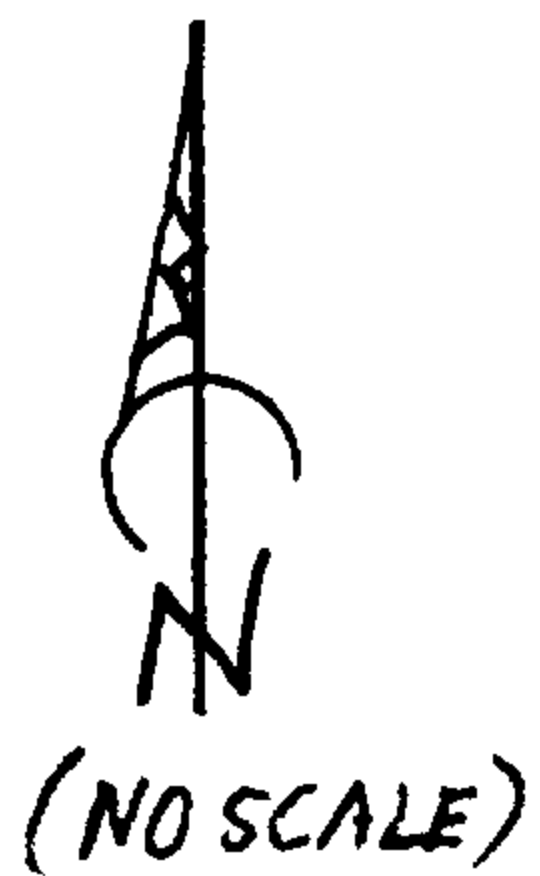
N/A

New Accessories

- AN 18 INCH DIAM. DOUGLAS FIR SCRIBED "INT SE DLC 46" CSBT" ON DOUBLE BLAZE; BEARS N 71 1/2° E, 338 FT.
A 13 INCH DIAM. DOUGLAS FIR " " INT SE DLC 46 CS "BT" " " " ; " S 03 1/4° W, 458 FT.
A 5 INCH DIAM. DOUGLAS FIR " " X " CSBT" ON A HIGH-LOW BLAZE; BEARS S 68 1/2° W, 148 FEET.
A 6 INCH DIAM. WHITE OAK " " " " " " " ; BEARS N 06 1/2° E, 29 1/2 FEET.
AN E-W FENCE LINE IS NORTH ≈ 1/2 FOOT AND A FENCE CORNER WITH FENCES RUNNING SOUTH, WEST AND ENE IS EAST ≈ 16 1/2 FEET (FENCE GOING SOUTH IS MOSTLY DOWN).

Sketch of Monument, Accessories, and General Area

Location & Comments



CORNER MONUMENT IS ON GENTLE WEST SLOPE IN OAK AND FIR REPROD. FOREST
Comp. Decline. 15 1/4° E
Agency DCSD
Party Chief STEPHEN JOHN FLAUSE
Note keeper Stephen John Flause
Witnesses MIKE S. KOCH

Surveyor's Seal
REGISTERED PROFESSIONAL LAND SURVEYOR

Kristian O. DeGroot

OREGON
JULY 17, 1981
KRISTIAN O. DeGROOT
# 1941

RENEWAL 12/31/15