

GOVERNMENT CORNER RESTORATION FORM

TOWNSHIP 24S RANGE 04W SEC. 15 PLSS # 440400

DOUGLAS COUNTY OREGON

DATE MARCH 6, 2015

FILED

Date: 11/24/2015 By: X

This survey consists of:

Map: \_\_\_\_\_

Narrative: \_\_\_\_\_

Corner Rpt: CS 67/42-17

Corner Designation

$\frac{1}{4}$   $\frac{S15}{S22}$

DOUGLAS COUNTY  
SURVEYOR

Previous Renewals 1982 (<sup>FIELD WORK</sup> DONE BEFORE '79), 1979  
Monument(s) Found: (Condition and Source)

- Condition Report
- Not Found
- Renewed
- Unrecorded
- Surveyed In
- Referenced Out

BENTZ I.R. NOT SEEN, MAYBE BURIED.

FROM 1979 BLM RESURVEY, A 3 1/4 INCH DIAMETER BRASS CAP (MARKED AS AT RIGHT) ON A 2 1/2 INCH I.D. IRON PIPE FIRMLY SET PROTRUDING 4 INCHES ABOVE GROUND.  
MONUMENT IS IN AN E-W FENCE.

MONUMENT DETAIL

U.S. DEPT. OF THE INTERIOR  
T 24 S R 4 W

$\frac{1}{4}$   $\frac{S15}{S22}$   
1979

BUR. OF LAND MANAGEMENT

Accessories Found

AREAS IN OBT LOCATIONS HAVE BEEN CLEARED IN PAST, NO EVIDENCE REMAINS.

ONE BENTZ BT FOR PROPORTIONED CORNER:  
AN 14" OAK, NOW A 23 INCH DIAM. BLACK OAK WITH A FULLY HEALED BLAZE; BEARS N 89 1/2° W,  
109 1/2 FEET DISTANT (AGREES WITH 1979 BLM RECORD).  
FIR BT LOCATION FALLS WHERE SOME LAND CLEARING WAS DONE NO EVIDENCE REMAINS.

C.S. File 67/42-17

RENEWAL

Monument Set (Procedure and Description)

MONUMENT DETAIL

N/A

N/A

New Accessories

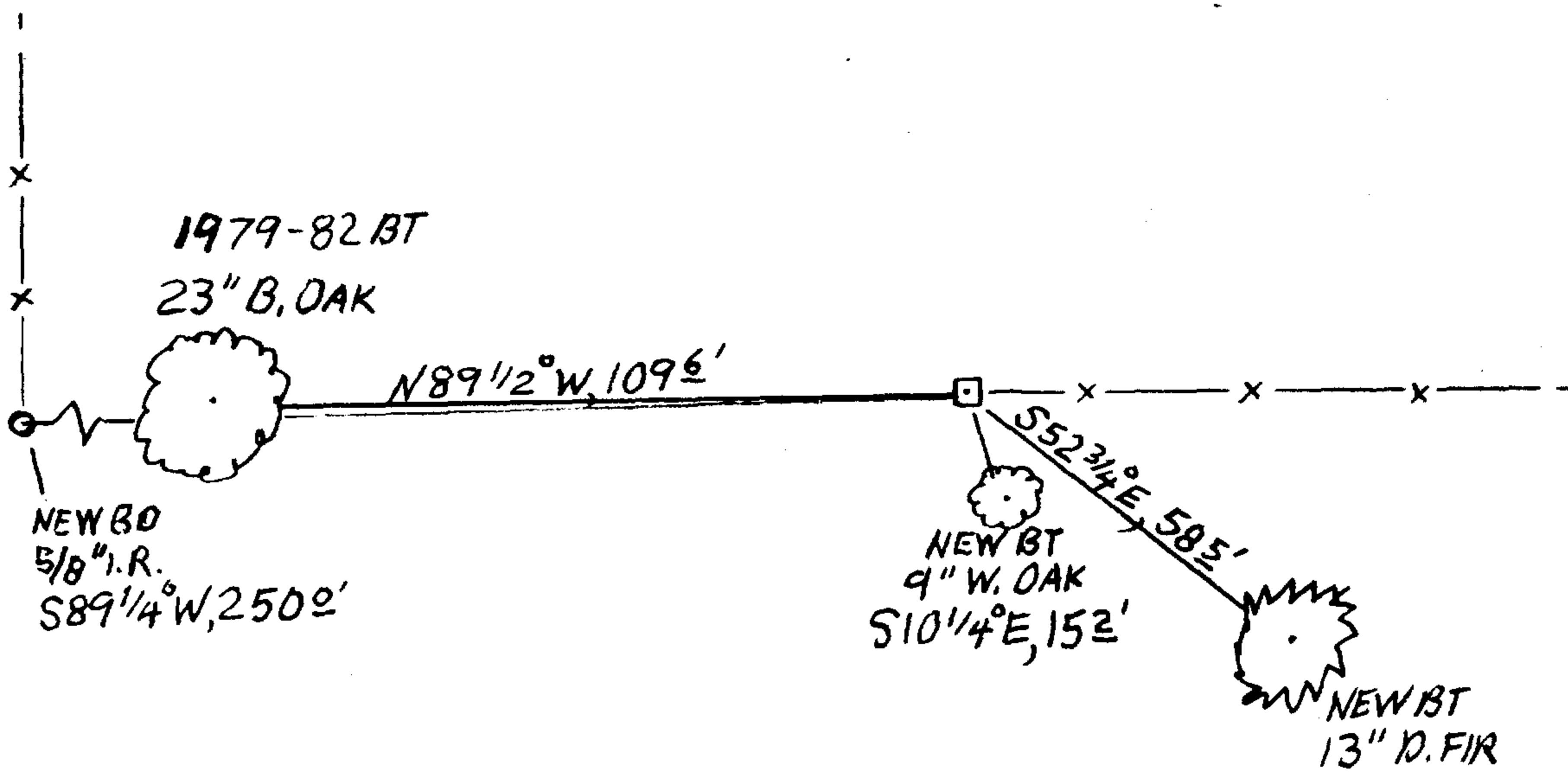
A 13 INCH DIAM. DOUGLAS FIR SCRIBED "1/4 S22CS" "BT" ON A DOUBLE BLAZE; BEARS S52 3/4° E 58 5 FEET DISTANT.

A 9 INCH DIAM. WHITE OAK SCRIBED "1/4 S22CS" "BT" ON A DOUBLE BLAZE; BEARS S10 1/4° E, 15 2 FEET DISTANT

A 5/8 INCH IRON ROD WITH A BENIZ SURVEY CAP PROT 10 INCHES ABOVE GROUND; BEARS S89 1/4° W, 250.0 FEET DISTANT (AS PER BENIZ SURVEY MAP FILED AT DCSD AS M112-11)

Sketch of Monument, Accessories, and General Area

Location & Comments



CORNER MONUMENT IS JUST NORTH OF SEASONAL E-W STREAM AND SE ≈ 120 FT. FROM SMALL DAM OUT-FLOW. MONUMENT ON NORTH EDGE OF OLDER OAK AND FIR REPROD.

Comp. Decline. 15 1/4° E  
Agency DCSD  
Party Chief STEPHEN JOHN FLAUSE  
Note keeper Stephen John Flause  
Witnesses MIKE S. KOCH

Surveyor's Seal  
REGISTERED  
PROFESSIONAL  
LAND SURVEYOR

Kristian O. DeGroot  
OREGON  
JULY 17, 1981  
KRISTIAN O. DeGROOT  
# 1941

RENEWAL 12/31/15