

GOVERNMENT CORNER RESTORATION FORM

FILED

TOWNSHIP 24S RANGE 04W SEC. 14 PLSS # 500400

Date: 11-24-2015 By: X

This survey consists of:

DOUGLAS COUNTY OREGON

DATE MARCH 4, 2015

Map: _____

Narrative: _____

Corner Rpt: CS 67/42-15

Corner Designation

S15 | S14
S22 | S23

DOUGLAS COUNTY SURVEYOR

Previous Renewals 1963
Monument(s) Found: _____ (Condition and Source)

- _____ Condition Report
- _____ Not Found
- Renewed
- _____ Unrecorded
- _____ Surveyed In
- _____ Referenced Out

FROM THE 1963 BLM RENEWAL A 3 1/4 INCH DIAMETER BRASS CAP (MARKED AS AT RIGHT) ON A 2 1/2 INCH I.D. IRON PIPE FIRMLY SET PROTRUDING 3 INCHES ABOVE GROUND.

MONUMENT DETAIL

U. S. CADASTRAL SURVEY
T24S R4W

S15 | S14
S22 | S23

1963

BUREAU OF LAND MANAGEMENT

Accessories Found

ORIGINAL BT STUMP HOLES FOUND IN 1963 WERE NOT LOOKED FOR, LAND HAS SINCE BEEN MACHINE CLEARED AND IS REGROWN WITH HEAVY BRUSH.

EVIDENCE OF TWO 1963 RENEWAL BT'S FOUND:
A FIR 14" DIA., NOW A 28 INCH DIAMETER 2 FOOT TALL FIR STUMP SHOWING A HEALED BLAZE WHICH IS OPENED TO FIND THE SCRIBING "WS14 BT"; BEARS N 73 1/4° E, 58 1/2 FEET DISTANT (RECORD N 74° E, 58 1/2 FT.).
A CEDAR 14" DIA., NOW A 4 1/2 INCH DIAM. X 3 FOOT TALL INCENSE CEDAR SAWED STUMP, SHOWING A HEALED BLAZE; BEARS N 41° W, 43 1/2 FEET DISTANT (AS PER RECORD).

WE FIND BC MONUMENT FOR ESE CORNER OF DLG 46 TO BE WEST 299 0 FEET DISTANT (RECORD N 89 1/2° W, 299 0 FEET).

Round 6" Fence corner Post SW 0.7' - Fences North and East

C.S. File 67/42-15

RENEWAL

Monument Set (Procedure and Description)

MONUMENT DETAIL

N/A

N/A

New Accessories

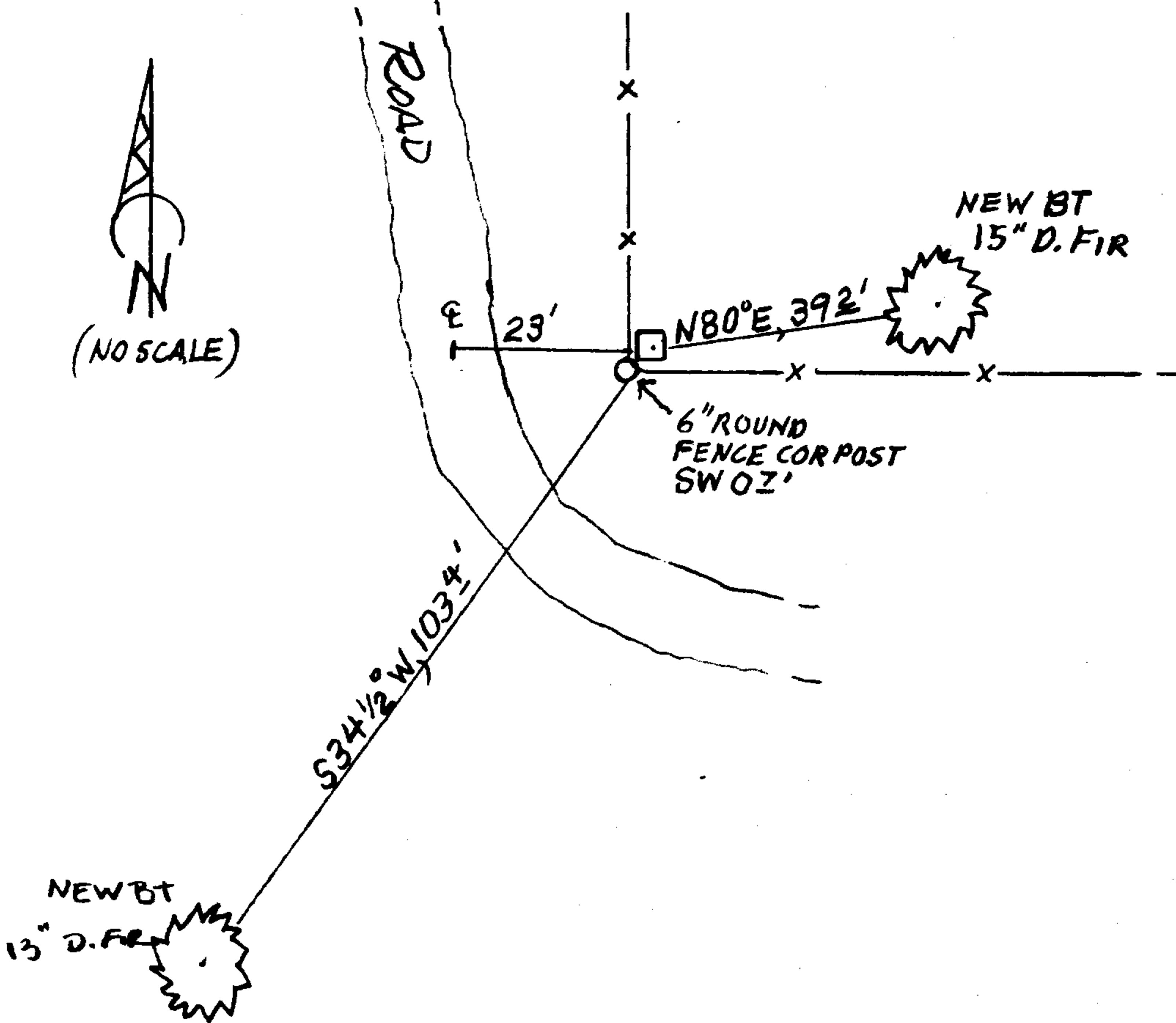
TWO NEW BEARING TREES:

A 15 INCH DIAM. DOUGLAS FIR SCRIBED "T24SR4WS14" "CSBT" ON A DOUBLE BLAZE; BEARS N80°E, 392 FEET DISTANT.

A 13 INCH DIAM. DOUGLAS FIR SCRIBED "T24SR4WS22CS" "BT" ON A DOUBLE BLAZE; BEARS S34 1/2°W, 103 1/2 FEET DISTANT.

Sketch of Monument, Accessories, and General Area (SKETCH SHOWS LIVE TREES ONLY)

Location & Comments



CORNER MONUMENT IS NEAR BOTTOM OF SHALLOW SOUTH COURSING DRAW IN OPEN FIR WOODLAND WITH SCATTERED CEDAR AND MADRONE.

Comp. Decline. 15 1/4° E
Agency NCSO
Party Chief STEPHEN JOHN FLAUSE
Note keeper Stephen John Flause
Witnesses MIKE S. KOCH

Surveyor's Seal
REGISTERED
PROFESSIONAL
LAND SURVEYOR

Kristian O. DeGroot
OREGON
JULY 17, 1981
KRISTIAN O. DeGROOT
1941

RENEWAL 12/31/15