

GOVERNMENT CORNER RESTORATION FORM

FILED

TOWNSHIP 24S RANGE 04W SEC. 22 PLSS # 046040

Date: 11-24-2016 By: X

DOUGLAS COUNTY OREGON

DATE MARCH 3, 2015

This survey consists of:

Map: _____

Narrative: _____

Corner Rpt: CS67/42-14

Corner Designation

DOUGLAS COUNTY SURVEYOR

SSE
DLC 46

- _____ Condition Report
- _____ Not Found
- Renewed
- _____ Unrecorded
- _____ Surveyed In
- _____ Referenced Out

Previous Renewals 1963
Monument (s) Found: _____ (Condition and Source)

FROM THE 1963 RENEWAL A 2 1/2 INCH DIAMETER BRASS CAP (MARKED AS AT RIGHT) ON A 1 INCH I.D. IRON PIPE IS PLUMB AND BURIED APPROX. 10 INCHES BELOW A DIRT ROAD SHOULDER.

MONUMENT DETAIL

COUNTY SURVEYORS OFFICE

S.S.E.
D.L.C.
46

T. 24 S.
R. 4 W.
1963

Accessories Found

NO GOOD EVIDENCE OF THE ORIGINAL BEARING TREES:
NE TREE'S LOCATION NOW FALLS UNDER DEEP LOG PILE (CAN NOT INVESTIGATE).
AT LOCATION OF NW TREE ONLY OAK FRAGMENTS REMAIN.

TWO 1963 RENEWAL BT'S AND A RECORD FENCE CORNER.
A 14" W. OAK NOW A 20 INCH DIAM. WHITE OAK WITH A FULLY HEALED DOUBLE BLAZE;
BEARS S 80° E, 24 1/2 FEET DISTANT (AS PER RECORD).
A 12" W. OAK NOW A 14 INCH DIAM. WHITE OAK WITH A FULLY HEALED DOUBLE BLAZE;
BEARS N 17° W, 80 3/4 FEET DISTANT (AS PER RECORD).
A FENCE CORNER WITH FENCES RUNNING NORTH, WEST AND SOUTHEAST BEARS N 34° W,
37 FEET DISTANT (AS PER RECORD).

C.S. File 67/42-14

RENEWAL

Monument Set (Procedure and Description)

MONUMENT DETAIL

N/A

SHOULDER IS RE CONTOURED SO BC MONUMENT NOW PROTRUDES 4 INCHES ABOVE GROUND.

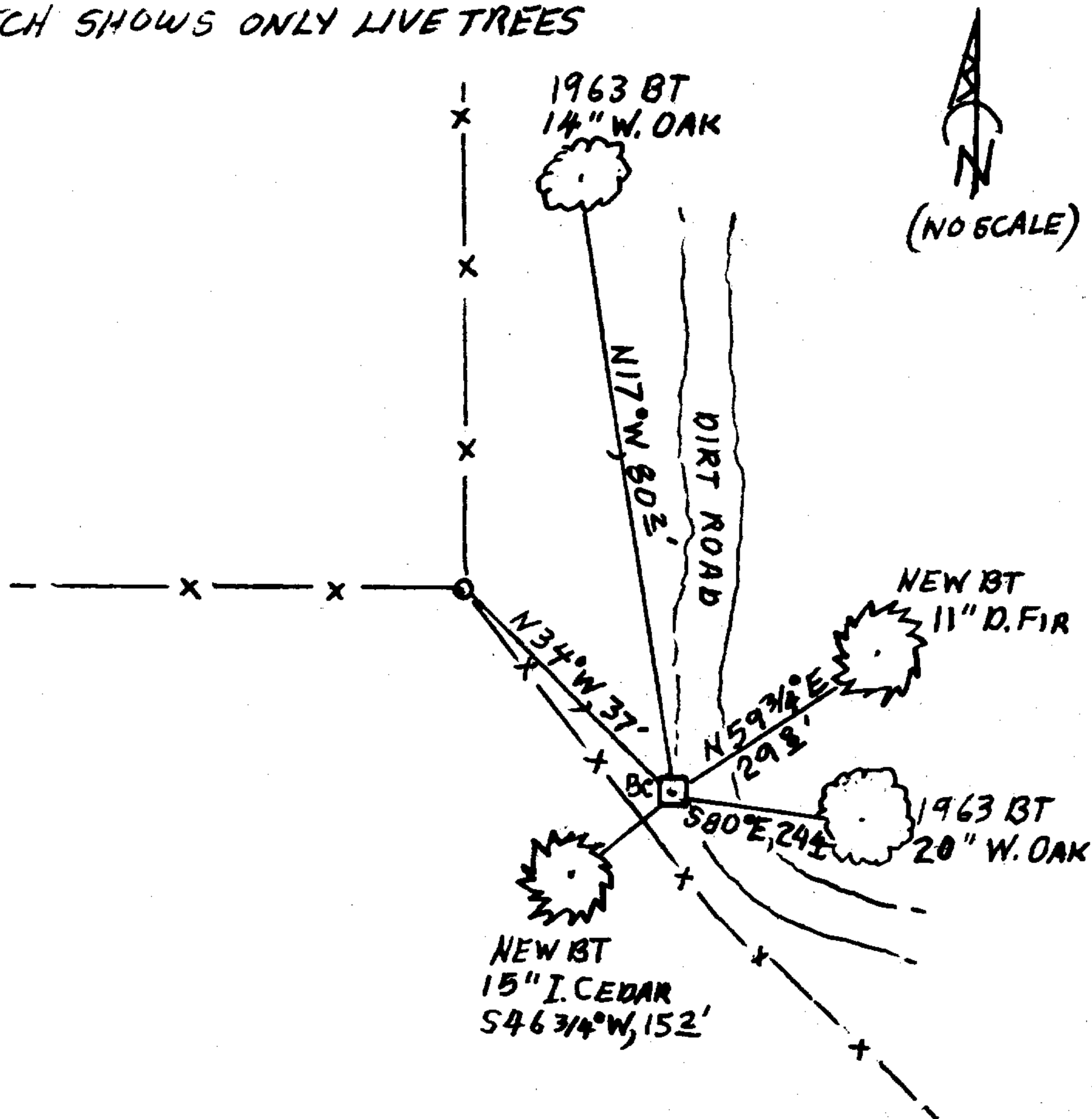
New Accessories

TWO NEW BEARING TREES:
AN 11 INCH DIAM. DOUGLAS FIR SCRIBED "SSE DLC 46 CS" "BT" ON A DOUBLE BLAZE; BEARS N59 3/4° E, 29 1/2 FEET DISTANT.
A 15 INCH DIAMETER INCENSE CEDAR SCRIBED "SSE DLC 46 CS" "BT" ON A DOUBLE BLAZE; BEARS S46 3/4° W, 15 1/2 FEET DISTANT.
A WHITE PAINTED METAL WITNESS SIGN AND POST IS SET WEST, 1 FOOT.

Sketch of Monument, Accessories, and General Area

Location & Comments

SKETCH SHOWS ONLY LIVE TREES



MONUMENT IS ON MODERATE WNW SLOPE IN OLDER REGROWTH FIR, CEDAR OAK AND MAPLE. THERE IS A RECENT CLEAR-CUT IN THE NE QUADRANT.

Comp. Decline. 15 1/4° E
Agency DCSO
Party Chief STEPHEN JOHN FLAUSE
Note keeper Stephen John Flause
Witnesses MIKE S. KOCH

Surveyor's Seal
REGISTERED
PROFESSIONAL
LAND SURVEYOR

Kristian O. DeGroot
OREGON
JULY 17, 1981
KRISTIAN O. DeGROOT
1941

RENEWAL 12/31/15