

GOVERNMENT CORNER RESTORATION FORM

FILED

TOWNSHIP 24S RANGE 04W SEC. 16 PLSS # 047060

Date: 11-24-2016 By: Y

This survey consists of:

DOUGLAS COUNTY OREGON

DATE FEB. 4, 2015

Map: _____

Narrative: _____

Corner Rpt: CS 67/42-9

Corner Designation

DOUGLAS COUNTY SURVEYOR

ESE
DLC 47

- _____ Condition Report
- _____ Not Found
- Renewed
- _____ Unrecorded
- _____ Surveyed In
- _____ Referenced Out

Previous Renewals 1963
Monument (s) Found: _____ (Condition and Source)

MONUMENT DETAIL

FROM THE 1963 RENEWAL A 2 1/2 INCH DIAMETER BRASS CAP (MARKED AS AT RIGHT) ON A 1 INCH I.D. IRON PIPE FIRMLY SET PROTRUDING 12 INCHES ABOVE GROUND.

COUNTY SURVEYORS OFFICE

ESE	T
DLC	24
47	S

R4W
1963

Accessories Found

EVIDENCE OF 2 ORIGINAL 1856 BEARING TREES:
AN OAK 18" DIA. NOW A LARGE SHALLOW ROOT-HOLE WITH A FALLEN BROKEN OAK STUMP SHOWING FRAGMENTARY SCRIBING "S" AND "W" BEARS N16°E, 160.4 FT.
AN OAK 12" DIA. NOW A SHALLOW ROOT-HOLE WITH NO OTHER CLEAR EVIDENCE IS NEAR THE RECORD BEARING AND DISTANCE, N6 1/2°W, 159.1 FT.

THE TWO 1963 RENEWAL BEARING TREES:
A 14" W. OAK NOW A 23 INCH DIAM. WHITE OAK WITH A FULLY HEALED DOUBLE BLAZE; BEARS N7 1/2°E, 102 1/2 FEET DISTANT (RECORD N9 1/2°E, 102 1/2 FT.).

AN 11" W. OAK NOW A TRIPLE TRUNK WHITE OAK (GROWN TOGETHER AT ROOT-CROWN) WITH THE MOST SOUTHERLY 15 INCH DIAM. TRUNK SHOWING A FULLY HEALED DOUBLE BLAZE. THE BASE OF THE SCRIBED TRUNK BEARS N66°E, 125 1/2 FEET DISTANT (RECORD N68°E, 125 1/2 FT.). THE CENTER OF THE ROOT CROWN OF THE NOW TRIPLE TRUNK TREE BEARS N65 3/4°E, 126 3/4 FEET DISTANT.

THE DESCRIBED FENCES AND CORNER HAVE BEEN REBUILT AND ARE NO LONGER AS DESCRIBED (SEE NEW ACCESSORIES).

C.S. File 67/42-9

Monument Set (Procedure and Description)

MONUMENT DETAIL

N/A

N/A

New Accessories

A 15 INCH DIAM. PEAR WHICH IS NOT BLAZED OR SCRIBED (ONLY PEAR ANYWHERE NEAR CORNER) BEARS N89°W, 106 1/2 FEET DISTANT

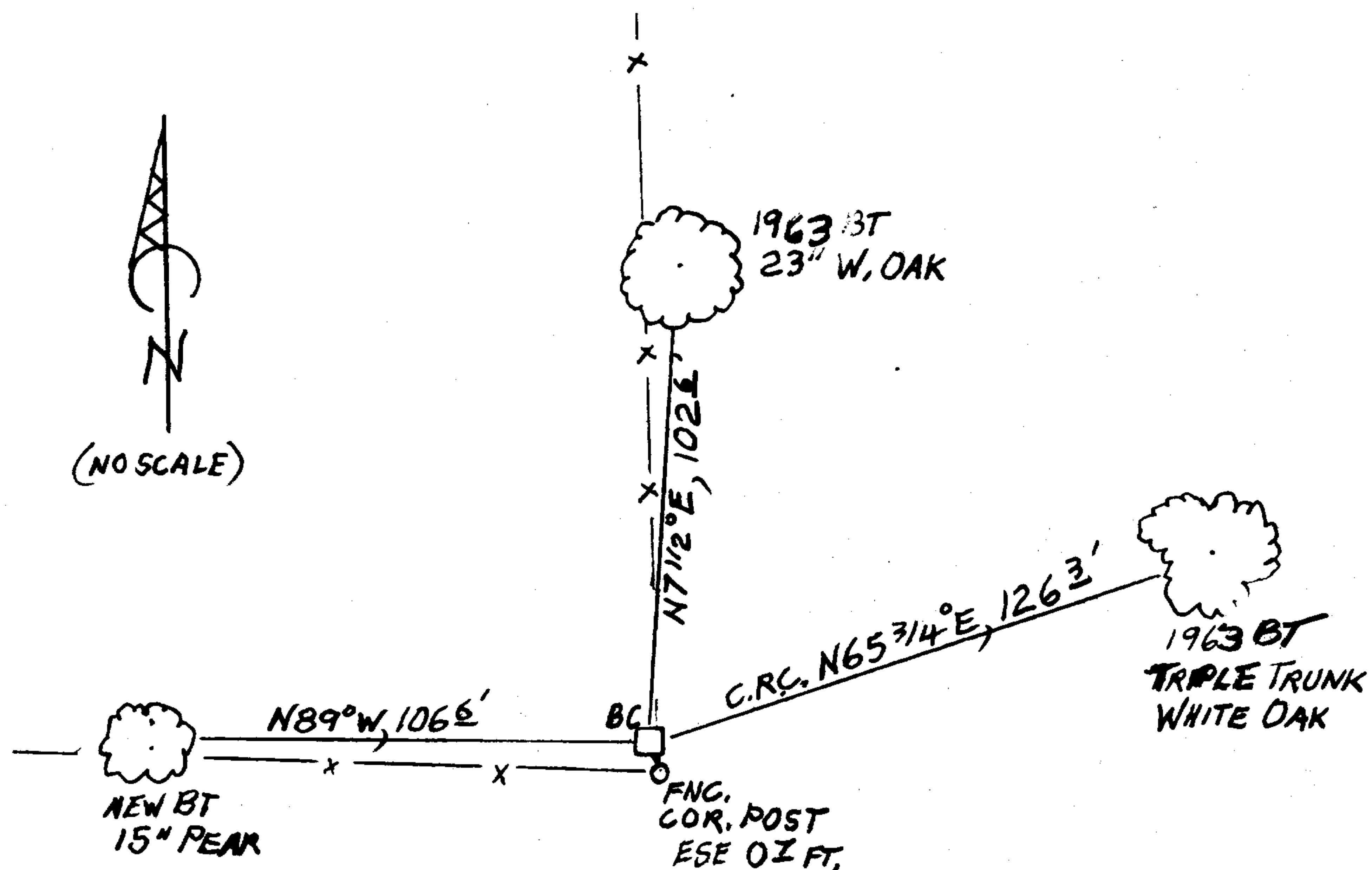
REBUILT FENCE CORNER WITH FENCES RUNNING NORTH, SOUTHSOUTHEAST AND WEST IS ESE, 0 1/2 FEET DISTANT.

NO SUITABLE TREES IN SE AND SW QUADRANTS.

Sketch of Monument, Accessories, and General Area

Location & Comments

(SKETCH SHOWS LIVE TREES ONLY)



MONUMENT IS ON A GENTLE SOUTHEAST SLOPE WITH PASTURE-LAND TO THE WEST AND AN OAK AND FIR WOODLAND TO THE EAST.

Comp. Decline. 15 1/4° E
Agency DCSD
Party Chief STEPHEN JOHN FLAUSE
Note keeper Stephen John Flause
Witnesses MIKE S. KOEN

Surveyor's Seal

REGISTERED PROFESSIONAL LAND SURVEYOR

Kristian O. DeGroot

OREGON JULY 17, 1981 KRISTIAN O. DeGROOT # 1941

RENEWAL 12/31/15