

GOVERNMENT CORNER RESTORATION FORM

FILED

TOWNSHIP 245 RANGE 05 W SEC. 15 PLSS # 440400

Date: 8-10-2015 By: XC  
This survey consists of:

DOUGLAS COUNTY OREGON

DATE FEB. 2, 2015

Map: \_\_\_\_\_

Corner Designation

Narrative: \_\_\_\_\_  
Corner Rpt: CS 67/42-7

$\frac{1}{4}$   $\frac{S15}{S22}$

DOUGLAS COUNTY  
SURVEYOR

Previous Renewals 1938  
Monument(s) Found: (Condition and Source)

- \_\_\_\_\_ Condition Report
- \_\_\_\_\_ Not Found
- Renewed
- \_\_\_\_\_ Unrecorded
- \_\_\_\_\_ Surveyed In
- \_\_\_\_\_ Referenced Out

MONUMENT DETAIL

THE 1938 MONUMENT:  
A 3/4 x 24 INCH PIECE OF SHAFTING WITH GEAR  
ATTACHED; NOW A SHAFT AS DESCRIBED BUT WITH  
TOP FLUSH WITH GROUND AND BENT SOUTHERLY  
APPROXIMATELY 0<sup>4</sup> FEET. ATTACHED 3 1/4 INCH GEAR  
NOW MOSTLY BROKEN OFF SHAFT (ALL FRAGMENTS  
FOUND NEARBY).

N/A

Accessories Found

ONE 1939 REFERENCE:  
A 1/2" x 27" BOLT NOW A 1/2 INCH DIAM. BOLT, TOP BENT AND LEANING APPROX. 0<sup>4</sup> FEET SOUTH.  
PLUMB POSITION OF BOLT BEARS NO<sup>14</sup>°E, 1318<sup>3</sup> FEET DISTANT (RECORD NO<sup>11</sup>°E, 1320 FT.).

THOROUGH SEARCH MADE FOR 3/4 INCH IRON PIPE TO WEST BUT AREA HAS BEEN CLEARED  
AND PLOWED IN THE PAST AND NO EVIDENCE IS FOUND.

A THOROUGH SEARCH WAS MADE FOR THE THREE OTHER PROPERTY CORNER MONUMENTS  
FROM THE 1938 SURVEY (DCSO RECORDS M65-45) NO EVIDENCE FOUND.

TWO DCSO RECORDS MAPS (M65-49 AND MLP 1994-0009) TAKEN TOGETHER INDICATE  
THE ABOVE FOUND 1/4 CORNER MONUMENT BEARS N89°E, 2,635<sup>49</sup> FEET FROM THE SECTION  
CORNER 1615. THIS MEASUREMENT IS CHECKED AND FOUND TO AGREE REASONABLY AT  
21122  
N89°E, 2635<sup>9</sup> FEET.

C.S. File 67/42-7

RENEWAL

Monument Set (Procedure and Description)

MONUMENT DETAIL

THE PLUMB POSITION OF THE FOUND SHAFT MONUMENT IS REFERENCED OUT AND THE MONUMENT IS REMOVED FROM GROUND. AT THE REFERENCED POSITION IS SET A 2 3/8 INCH DIAM. BRASS CAP (MARKED AS AT RIGHT) ON A 1 INCH I.D. X 32 INCH LONG IRON PIPE. TOP OF NEW B.C. MONUMENT IS NOW 1 FOOT BELOW GROUND SURFACE. THE FOUND 3/4 INCH SHAFT MONUMENT (NOW STRAIGHTENED) AND GEAR FRAGMENTS ARE PLACED ON THE WEST EDGE OF THE B.C. MONUMENT.

DOUGLAS COUNTY SURVEYOR  
T 245  
R 5W  
1/4 515  
S 22  
2015

New Accessories

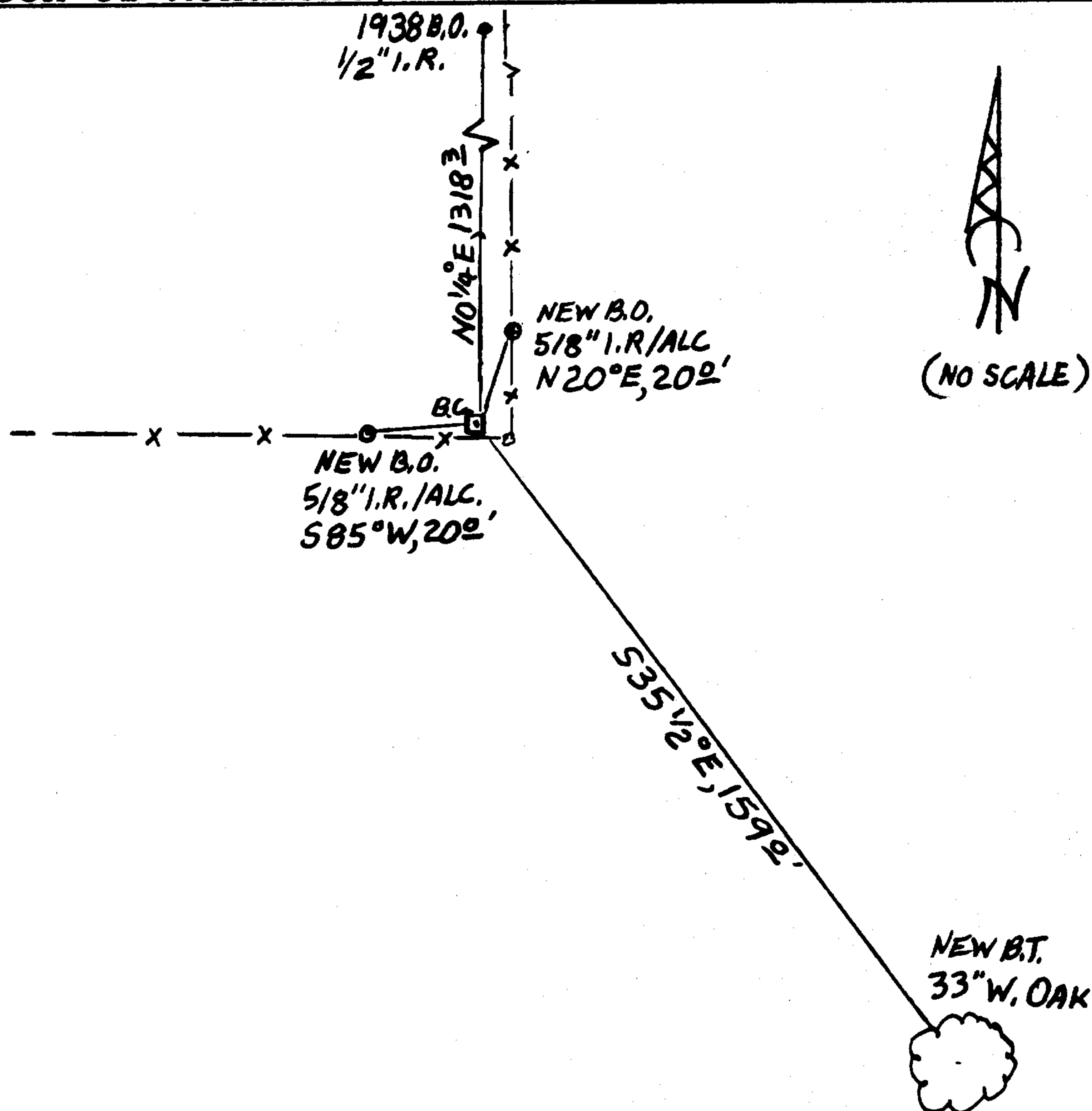
A 5/8 INCH DIAM. IRON ROD WITH A DOUGLAS CO. SURVEYOR 1 1/2 INCH DIAM. ALUMINUM CAP STAMPED "B01 2015"; BEARS N20°E, 20' FEET DISTANT.

A 33 INCH DIAM. WHITE OAK SCRIBED "1/4 S22 CS" "BT" ON A DOUBLE BLAZE; BEARS S35 1/2°E, 159' FEET DISTANT.

A 5/8 INCH DIAM. IRON ROD WITH A DOUGLAS CO. SURVEYOR 1 1/2 INCH DIAM. ALUMINUM CAP STAMPED "B02 2015"; BEARS S85°W, 20' FEET DISTANT.

Sketch of Monument, Accessories, and General Area

Location & Comments



MONUMENT IS ON A GENTLE WEST SLOPE IN OPEN PASTURE LAND. A FENCE CORNER WITH FENCES RUNNING N-S AND W BEARS APPROX. S69°E, 6 FEET DISTANT.

Comp. Decline. 15 1/4° E  
Agency DCSO  
Party Chief STEPHEN JOHN FLAISE  
Note keeper Stephen John Flaiss  
Witnesses MIKE S. KOCH

Surveyor's Seal

REGISTERED  
PROFESSIONAL  
LAND SURVEYOR

*Kristian O. DeGroot*

OREGON  
JULY 17, 1981  
KRISTIAN O. DeGROOT  
# 1941

RENEWAL 12/31/15