

GOVERNMENT CORNER RESTORATION FORM

FILED

TOWNSHIP 24S RANGE 05W SEC. 15 PLSS # 400400

Date: 8-10-2015 By: y  
This survey consists of:

DOUGLAS COUNTY OREGON

DATE JAN. 29, 2015

Map: \_\_\_\_\_

Corner Designation

Narrative: \_\_\_\_\_  
Corner Rpt: C567 | 42-6

S16 | S15  
S21 | S22

DOUGLAS COUNTY  
SURVEYOR

Previous Renewals 1977, 2005  
Monument(s) Found: \_\_\_\_\_ (Condition and Source)

- \_\_\_\_\_ Condition Report
- \_\_\_\_\_ Not Found
- Renewed
- \_\_\_\_\_ Unrecorded
- \_\_\_\_\_ Surveyed In
- \_\_\_\_\_ Referenced Out

A SEARCH WAS MADE FOR THE 1977 BRASS  
CAP MONUMENT, NO EVIDENCE WAS FOUND.

MONUMENT DETAIL

Accessories Found

(MEASURED FROM CORNER POSITION DETERMINED FROM 1977, 1 1/2 INCH I.P. SET AS A REFERENCE)

THE TWO 1977 DESCRIBED REFERENCES:  
A 1 1/2 INCH I.D. IRON PIPE FIRMLY SET PROTRUDING 3 INCHES ABOVE GROUND; BLAZES  
SOUTH, 24<sup>±</sup> FEET DISTANT (AS PER RECORD). I.P. IS IN AN EAST-WEST FENCELINE.

A 10' ASH NOW A 17 INCH DIAMETER ASH WITH NOW HARDLY VISIBLE EVIDENCE OF A  
HEALED BLAZE; BEARS S38 1/2° W, 301<sup>±</sup> FEET DISTANT (AS PER RECORD).

C.S. File 67 | 42-6

RENEWAL

Monument Set (Procedure and Description)

AT THE POSITION AS DETERMINED FROM THE FOUND 1977 REFERENCES; A 2 3/8 INCH DIA. BRASS CAP (MARKED AS AT RIGHT) ON A 1 INCH I.D. 32 INCH LONG IRON PIPE 8 INCHES BELOW GROUND SURFACE.

MONUMENT DETAIL

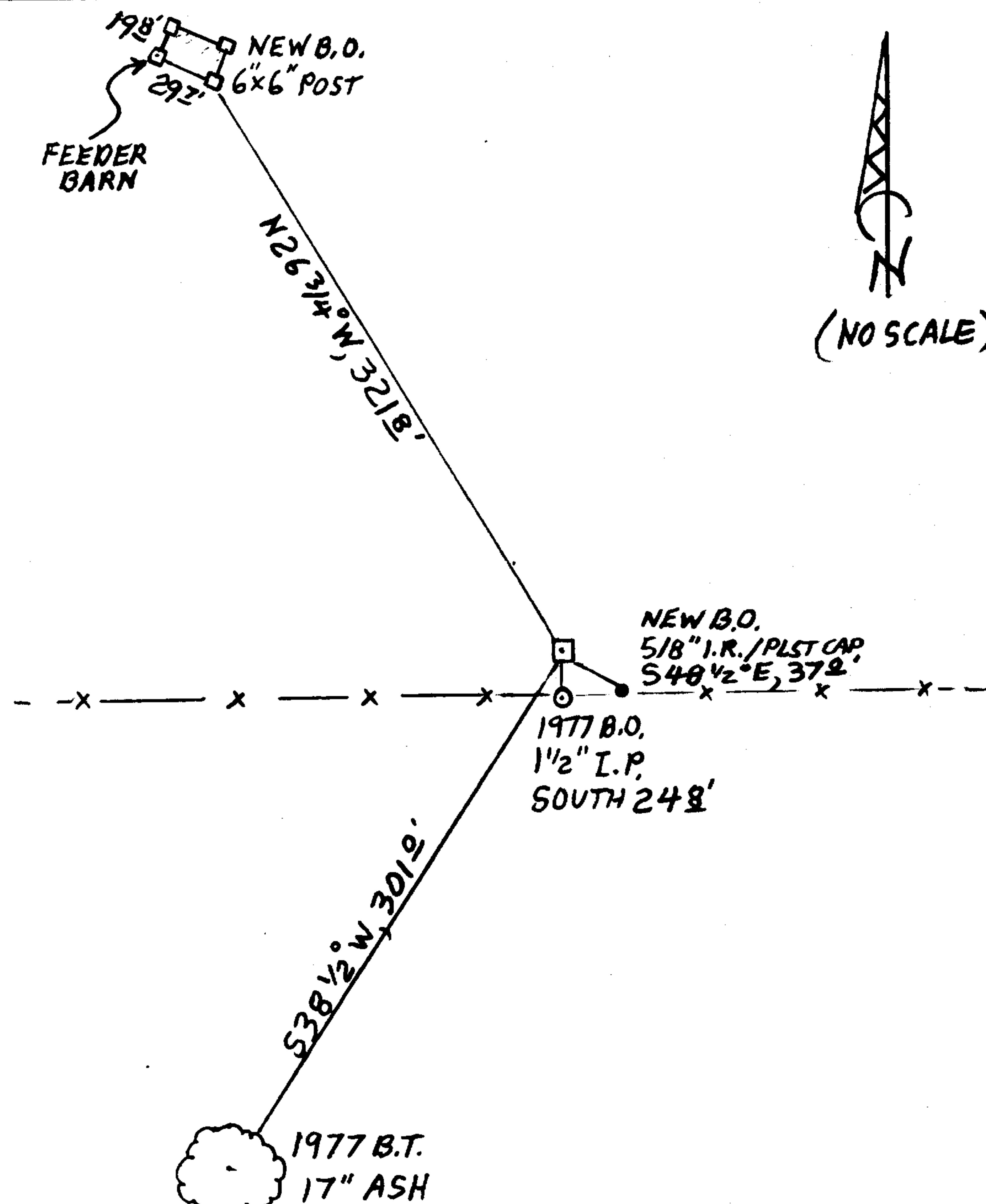
DOUGLAS COUNTY SURVEYOR T24S S16 | S15 S21 | S22 R5W 2015

New Accessories

A 5/8 INCH DIAM IRON ROD WITH A YELLOW PLASTIC CAP MARKED "COUNTY SURVEYOR" SET PROTRUDING 4 INCHES ABOVE GROUND; BEARS S48 1/2 E, 37 FEET DISTANT. THE SOUTHEAST CORNER OF A NOMINAL 6x6 CORNER POST AT THE SOUTHEAST CORNER OF A 19 1/2 x 29 1/2 FOOT FEEDER BARN; BEARS N26 3/4 W, 321 1/2 FEET DISTANT.

Sketch of Monument, Accessories, and General Area

Location & Comments



MONUMENT IS NEAR BOTTOM OF A GENTLE WESTERLY SLOPE IN AN OPEN PASTURE. AN E-W FENCE IS SOUTH 25 FEET.

Comp. Decline. 15 1/4 E Agency DCSD Party Chief STEPHEN JOHN FLAUSE Note keeper Stephen John Flause Witnesses MIKE S. KOCH

Surveyor's Seal

REGISTERED PROFESSIONAL LAND SURVEYOR

Kristian O. DeGroot

OREGON JULY 17, 1981 KRISTIAN O. DeGROOT # 1941

RENEWAL 12/31/15