

GOVERNMENT CORNER RESTORATION FORM

FILED

TOWNSHIP 24S RANGE 07W SEC. 05 PLSS # 260640

Date: 10-2-2014 By: X

This survey consists of:

DOUGLAS COUNTY OREGON

DATE SEPT. 02, 2014

Map: \_\_\_\_\_

Narrative: \_\_\_\_\_

Corner Rpt: CS 67/41-59

Corner Designation

C —  $\frac{E \frac{1}{16}}{S 5}$  — C

DOUGLAS COUNTY SURVEYOR

Previous Renewals ESTABLISHED 1963, NO RENEWALS  
Monument(s) Found: (Condition and Source)

- \_\_\_\_\_ Condition Report
- \_\_\_\_\_ Not Found
- Renewed
- \_\_\_\_\_ Unrecorded
- \_\_\_\_\_ Surveyed In
- \_\_\_\_\_ Referenced Out

THE ORIGINAL 1963 MONUMENT:

A 3 1/4 INCH DIAMETER BRASS CAP (MARKED AS AT RIGHT)  
ON A 2 INCH I.D. IRON PIPE, SET PLUMB PROTRUDING 6  
INCHES ABOVE GROUND.

MONUMENT DETAIL

U. S. CADASTRAL SURVEY

E  $\frac{1}{16}$   
C —  $\frac{S 5}{S 5}$  — C

1963

BUREAU OF LAND MANAGEMENT

Accessories Found

EVIDENCE OF THE TWO ORIGINAL BEARING TREES:

A FIR, 12 INS. DIAM. NOW A SAWED, ROTTING 26 INCH DIAM, 2 1/2 FOOT TALL DOUGLAS FIR STUMP WITH  
A FULLY HEALED SINGLE BLAZE; BEARS N 1 1/2° E, 18 1/2 FEET DISTANT (AS PER RECORD).

A FIR, 14 INS. DIAM. NOW A DOUGLAS FIR, 32 INCHES IN DIAM. WITH THE BLAZE MARKS NO LONGER  
VISIBLE; BEARS S 47 1/4° W, 42° FEET DISTANT (RECORD S 47 1/4° W, 40 3 FEET, 1)

C.S. File 67/41-59

Monument Set (Procedure and Description)

MONUMENT DETAIL

N/A

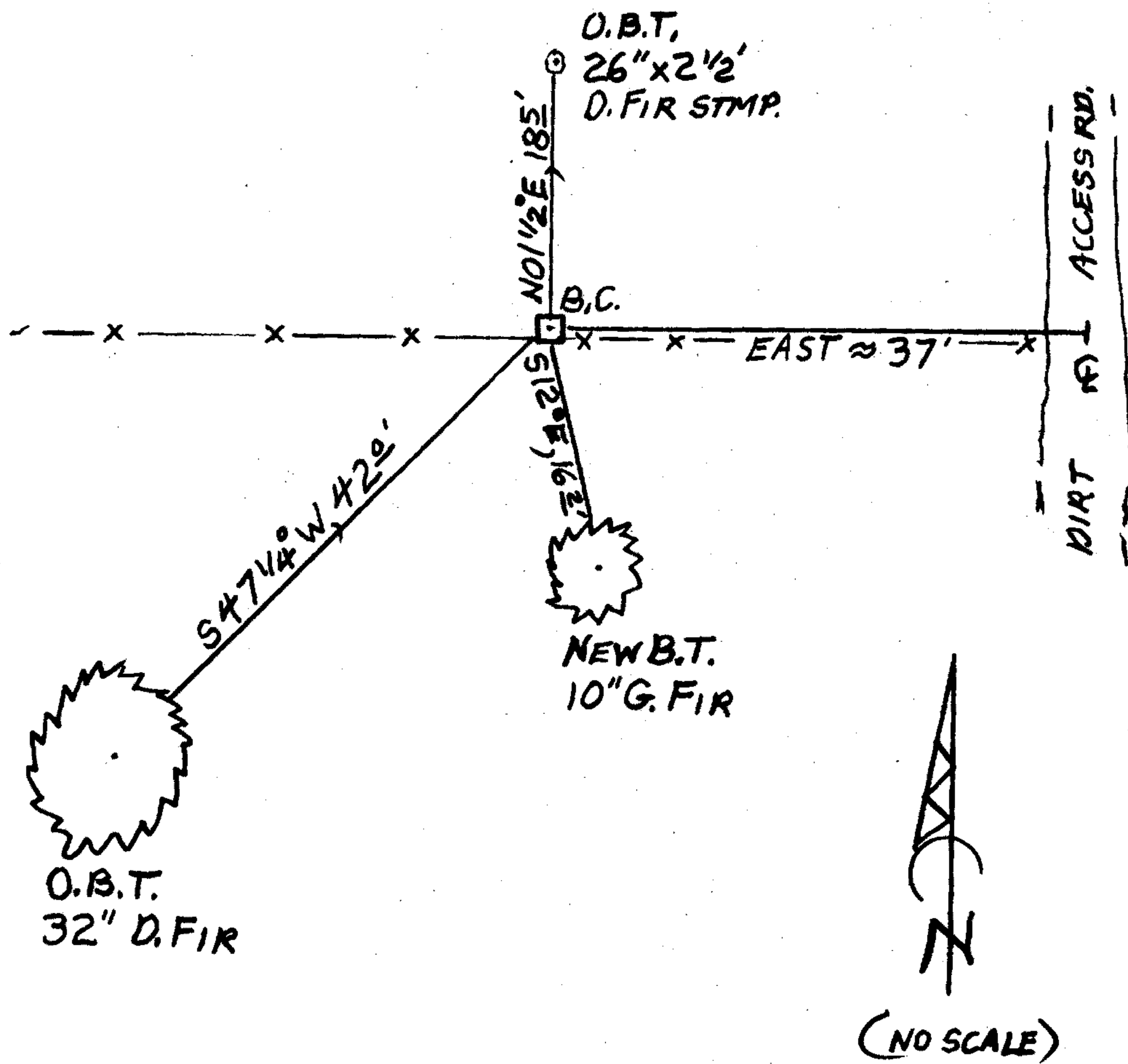
N/A

New Accessories

A GRAND FIR, 10 INCH DIAM., SCRIBED "CE 1/16 S5 CS" "BT" ON A DOUBLE BLAZE; BEARS S12°E, 16 2/3 FEET DISTANT.

Sketch of Monument, Accessories, and General Area

Location & Comments



MONUMENT IS ON GENTLE WEST SLOPE SW QUADRANT IS VERY OLD FIR REPROD. PASTURE TO EAST AND CLEAR-CUT IN NW QUADRANT. A DIRT ROAD IS ≈ 37 FEET AND AN E-W RUNNING WIRE FENCE IS 2 1/2 FEET SOUTH.

Comp. Decline. 15 1/2° E  
 Agency D.C.S.O.  
 Party Chief STEPHEN JOHN FLAISE  
 Note keeper Stephen John Flaish  
 Witnesses MIKE S. KOCH

Surveyor's Seal

REGISTERED  
 PROFESSIONAL  
 LAND SURVEYOR

*Randall W. Smith*

OREGON  
 JULY 25, 1900  
 RANDALL W. SMITH  
 2400

RENEWAL 6-30-2016