

GOVERNMENT CORNER RESTORATION FORM

FILED

TOWNSHIP 24S RANGE 07W SEC. 5 PLSS # 240660

Date: 10-2-2014 By: X
This survey consists of:

DOUGLAS COUNTY OREGON

DATE AUG. 29, 2014

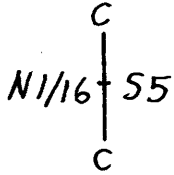
Map: _____

Narrative: _____

Corner Rpt: CS 67/41-58

Corner Designation

DOUGLAS COUNTY
SURVEYOR



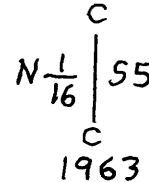
Previous Renewals ESTB. 1963 NO RENEWALS
Monument(s) Found: (Condition and Source)

- ___ Condition Report
- ___ Not Found
- Renewed
- ___ Unrecorded
- ___ Surveyed In
- ___ Referenced Out

MONUMENT DETAIL

THE ORIGINAL 1963 MONUMENT:
A 3 1/4 INCH DIAMETER BRASS CAP (MARKED AS A RIGHT)
ON A 2 INCH I.D. IRON PIPE LEANING APPROXIMATELY
N 60° E, 0.25 FEET AND PROTRUDING 7 INCHES ABOVE
GROUND.

U.S. CADASTRAL SURVEY



BUREAU OF LAND MANAGEMENT

Accessories Found

ACCESSORIES ARE MEASURED FROM THE PLUMB POSITION OF THE ABOVE FOUND MONUMENT.

EVIDENCE OF THE TWO ORIGINAL BEARING TREES:

A FIR, 12 INS. DIAM NOW A LARGE SHALLOW ROOT-HOLE NEAR THE RECORD BEARING AND DISTANCE.

A CEDAR, 25 INS. DIAM NOW A RED CEDAR, 44 INCHES IN DIAM. WITH A FULLY HEALED BLAZE;
BEARS N40°W, 35° FEET DISTANT (AS PER RECORD).

C.S. File 67/41-58

B.C. MONUMENT IS RETURNED TO ITS PLUMB POSITION AND NOW PROTRUDES 6 INCHES ABOVE GROUND.

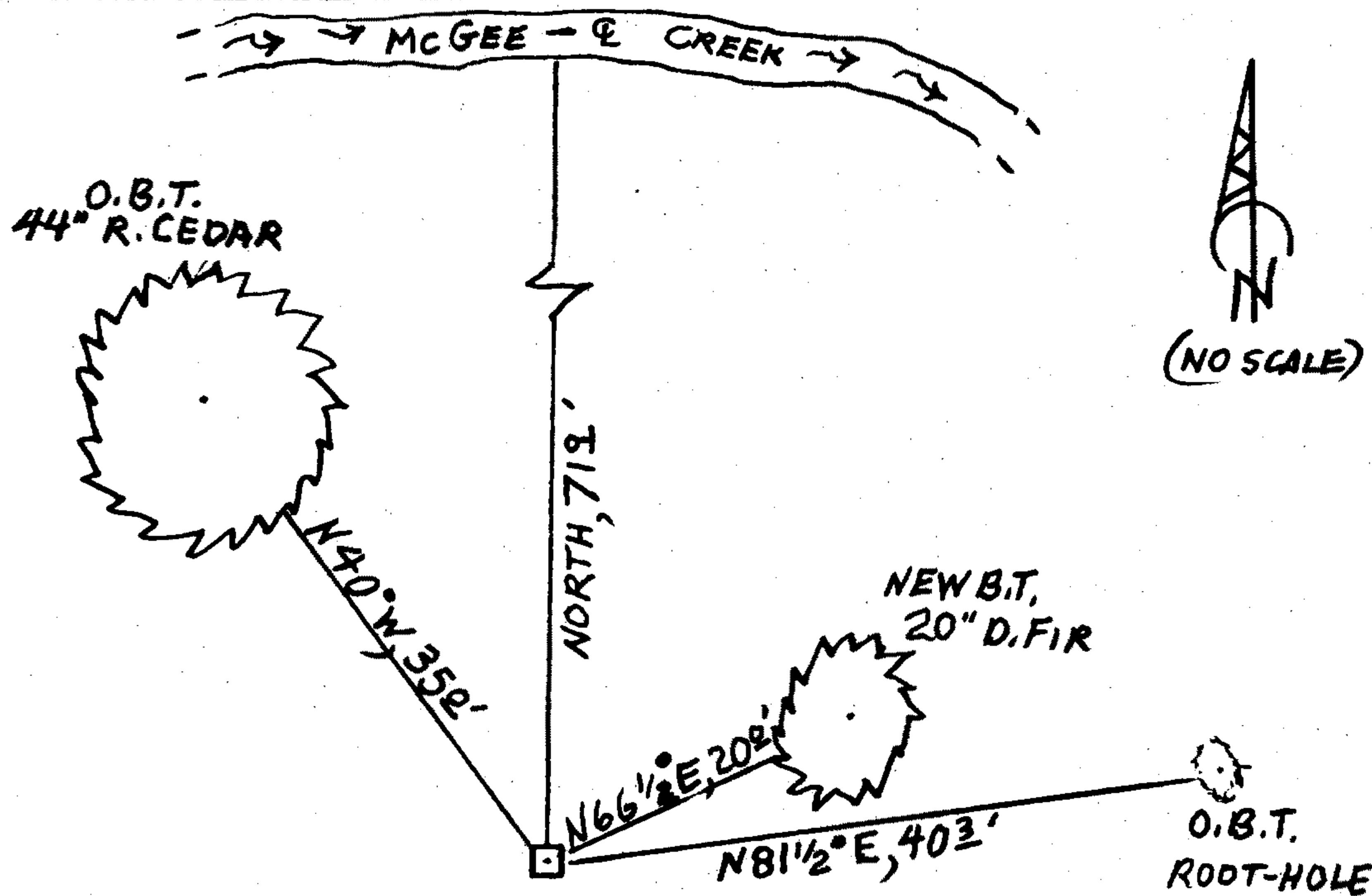
N/A

New Accessories

A DOUGLAS FIR, 20 INCHES IN DIAM., SCRIBED "CN'1655CS" "BT" ON A DOUBLE BLAZE; BEARS N66 1/2° E, 20° FEET DISTANT.

Sketch of Monument, Accessories, and General Area

Location & Comments



MONUMENT IS ON FLAT PASTURE-LAND WITH SCATTERED MAPLE, ALDER, FIR, CEDAR AND YEW.

Comp. Decline. 15 1/2° E
Agency D.G.S.O.
Party Chief STEPHEN JOHN FLAUSE
Note keeper Stephen John Flause
Witnesses MIKE S. KOCH

Surveyor's Seal

REGISTERED PROFESSIONAL LAND SURVEYOR

Randall W. Smith

OREGON
JULY 25, 1990
RANDALL W. SMITH
2499

RENEWAL 6-30-2016