

GOVERNMENT CORNER RESTORATION FORM

FILED

TOWNSHIP 23 S RANGE 07 W SEC. 32 PLSS # 300129

Date: 8-25-2014 By: JC

DOUGLAS COUNTY OREGON

DATE AUG. 4, 2014

This survey consists of:

Map: _____

Narrative: _____

Corner Rpt: CS 67/41-39

Corner Designation

W.C. TO M.C.

532 | 533

DOUGLAS COUNTY SURVEYOR

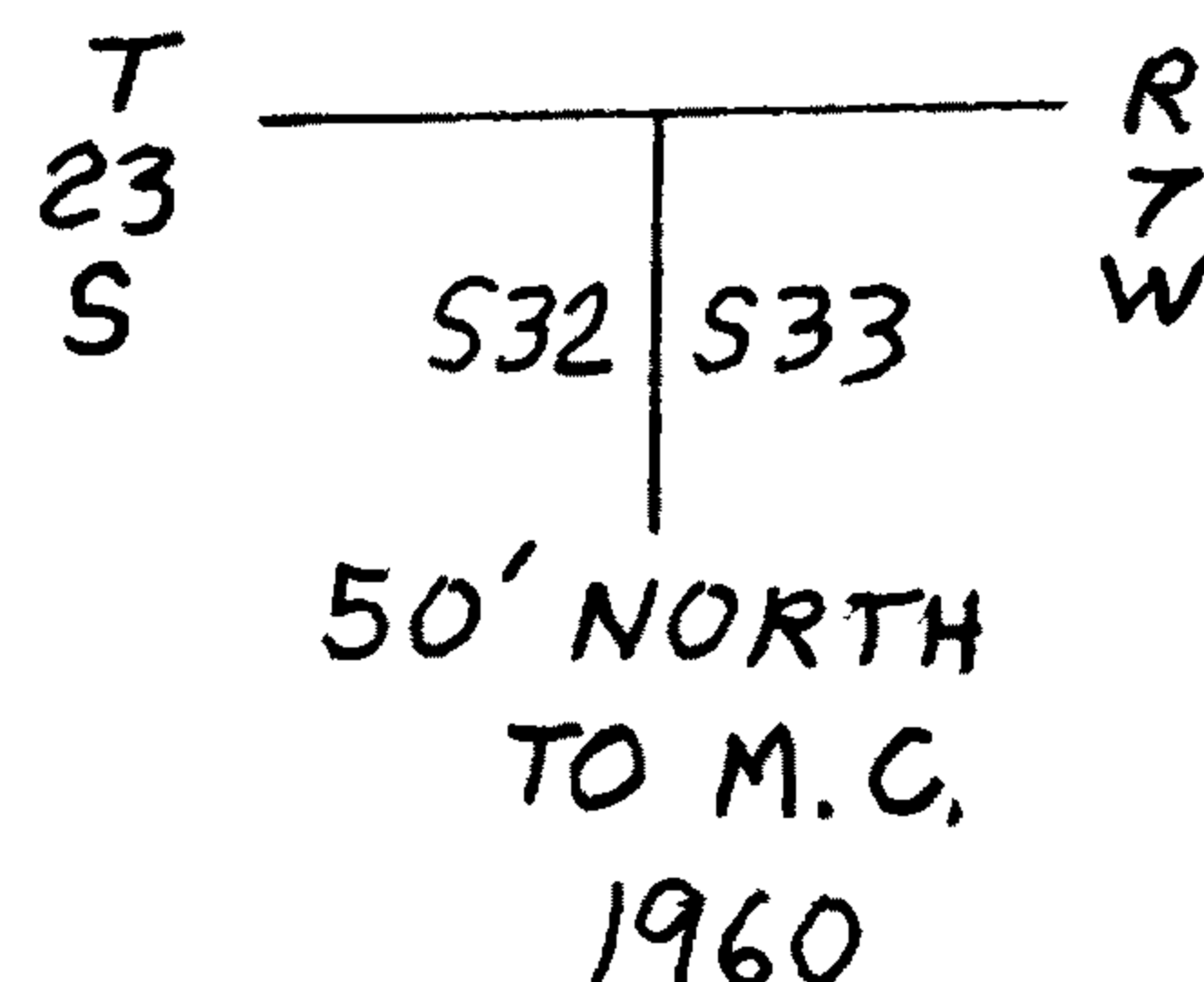
Previous Renewals 1926, 1960, 1962
Monument(s) Found: (Condition and Source)

- Condition Report
- Not Found
- Renewed
- Unrecorded
- Surveyed In
- Referenced Out

MONUMENT DETAIL

FROM THE 1960 DCSD RENEWAL:
A 2 1/2 INCH DIAMETER BRASS CAP (MARKED AS AT RIGHT) ON A 1 INCH I.D. IRON PIPE PROTRUDING 12 INCHES ABOVE GROUND LEANING M/L SOUTH 0.5 FEET FROM PLUMB (LOGS DUMPED NEAR MON. PROBABLY TIPPED B.C.).

COUNTY SURVEYORS OFFICE WIT. COR.



Accessories Found

ALL FOUND ACCESSORIES ARE MEASURED FROM PLUMB POSITION OF FOUND B.C. MONUMENT.

NO EVIDENCE OF ORIGINAL BEARING TREES, OR THE 1926 RENEWAL TREES FOR THE ORIGINAL MEANDER CORNER POSITION (IN FLOOD ZONE ALL WASHED AWAY).

NO EVIDENCE OF 1960 WITNESS CORNER TO THE MEANDER CORNER B.T.'S. SW TREE POSITION FALLS IN CUT-BANK OF WIDENED ROAD AND SE TREE POSITION FALLS IN STAGING AREA FOR BRIDGE REBUILD.

FROM THE 1962 RENEWAL THE TWO NEW B.T.'S.
A 9" D. FIR NOW A 24 INCH DIAM. DOUGLAS FIR WITH A NOW BARELY VISIBLE FULLY HEALED DOUBLE BLAZE; BEARS S53°W, 77.6 FEET DISTANT (AS PER RECORD).
A 9" MYRTLE NOW A 13 INCH DIAM. MYRTLE WITH A FULLY HEALED DOUBLE BLAZE; BEARS S69°E, 268° FEET DISTANT (AS PER RECORD).

THE BC. MONUMENT IS RETURNED TO ITS PLUMB POSITION AND NOW PROTRUDES 14 INCHES ABOVE GROUND.

N/A

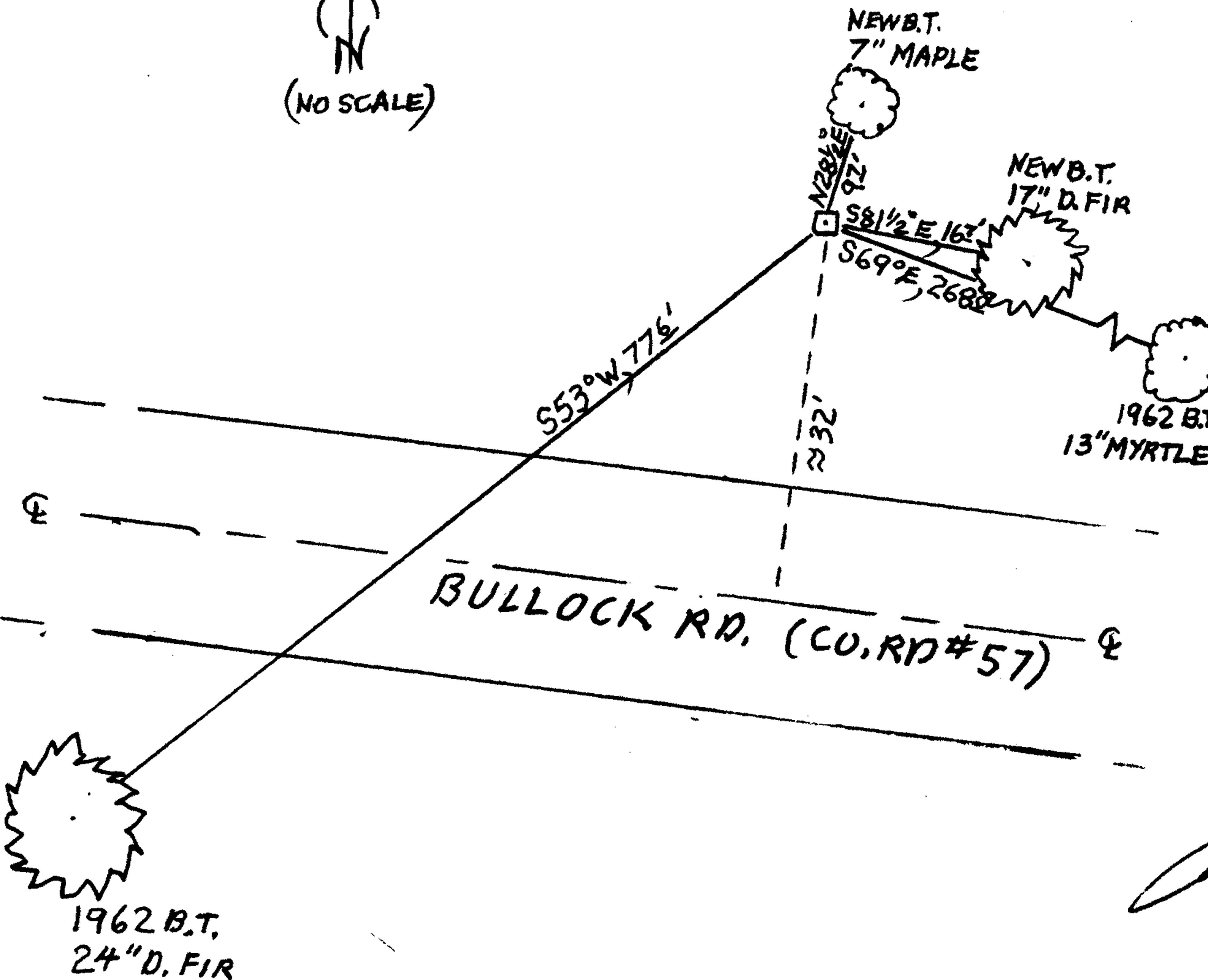
New Accessories

A 7 INCH DIAM. MAPLE SCRIBED "WCMC.S.33.CS" "BT" ON A DOUBLE BLAZE; BEARS N28 1/2° E, 9 1/2 FEET DISTANT.

A 17 INCH DIAM. DOUGLAS FIR SCRIBED "WCMC.S.33.CS" "BT" ON A DOUBLE BLAZE; BEARS S81 1/2° E, 16 1/2 FEET DISTANT.

Sketch of Monument, Accessories, and General Area

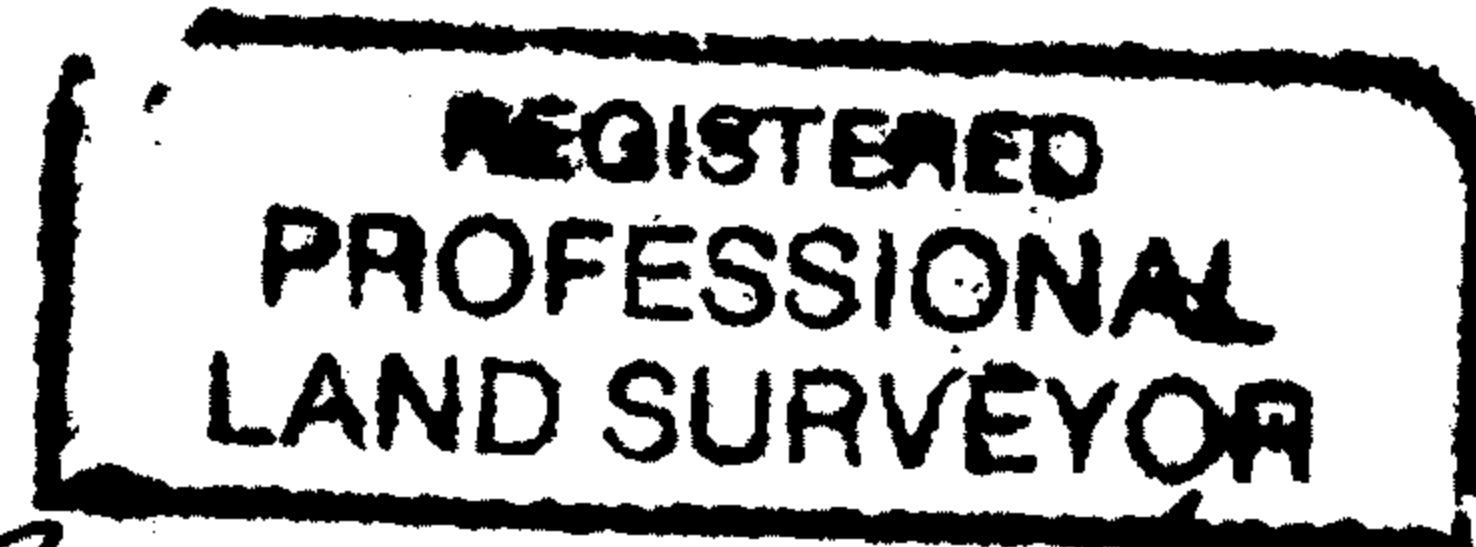
Location & Comments



MONUMENT IS ON FLAT GROUND OFF OF NORTH ROAD SHOULDER IN SCATTERED YOUNG FIR, MAPLE, ALDER AND MYRTLE.

Comp. Decline. 15 1/2° E
Agency DC50
Party Chief STEPHEN JOHN FLAUSE
Note keeper Stephen John Flause
Witnesses MIKE S. KOCH

Surveyor's Seal



Handwritten signature of Randall W. Smith

