

GOVERNMENT CORNER RESTORATION FORM

FILED

TOWNSHIP 24 S RANGE 07 W SEC. 01 PLSS # 640600

Date: 8/12/2014 By: JC
This survey consists of:

DOUGLAS COUNTY OREGON

DATE JULY 31, 2014

Map: _____

Narrative: _____

Corner Rpt: CS 67/41-35

Corner Designation

DOUGLAS COUNTY
SURVEYOR

1/4 $\frac{S1}{S12}$

Previous Renewals 1965 PROPORTION IN
Monument(s) Found: (Condition and Source)

- ___ Condition Report
- ___ Not Found
- Renewed
- ___ Unrecorded
- ___ Surveyed In
- ___ Referenced Out

FROM THE 1965 HAINES SURVEY A 1" X 1" X 36"
"T" IRON NOW A 3/4 X 3/4 INCH "T" IRON WITH
UPPERMOST 12 INCHES BENT OVER APPROX. 90° TO SOUTH
AND BURIED JUST UNDER GROUND SURFACE. N/A
(WHEN REMOVED TO STRAIGHTEN WE FIND TO
MEASURE 48 INCHES LONG.)

MONUMENT DETAIL

Accessories Found Acc's MEASURED FROM PLUMB POSITION OF "T" IRON.

NO EVIDENCE REMAINS FROM O.B.T.'S.

NO B.T.'S WERE MARKED IN 1965 SURVEY BUT 1/16 COR TO EAST IS FOUND.
A 3/4 X 3/4 INCH "T" IRON IS SET PLUMB PROT. 20 INCHES ABOVE GROUND; BEARS S89°34'E,
1331.2 FEET DISTANT (RECORD 1324.2 S89°48'E).

RENEWAL

Monument Set (Procedure and Description)

MONUMENT DETAIL

N/A

THE PLUMB POSITION OF FOUND MONUMENT IS REFERENCED OUT. MONUMENT IS REMOVED FROM GROUND. THE BENT TOP (APPROX. 1 FOOT) IS REMOVED AND THE REMAINDER IS MADE STRAIGHT. THE NOW 35 1/2 INCH "T" IRON IS RESET PLUMB AT THE REFERENCED OUT POSITION WITH ITS TOP NOW APPROX. FLUSH WITH THE GROUND.

New Accessories

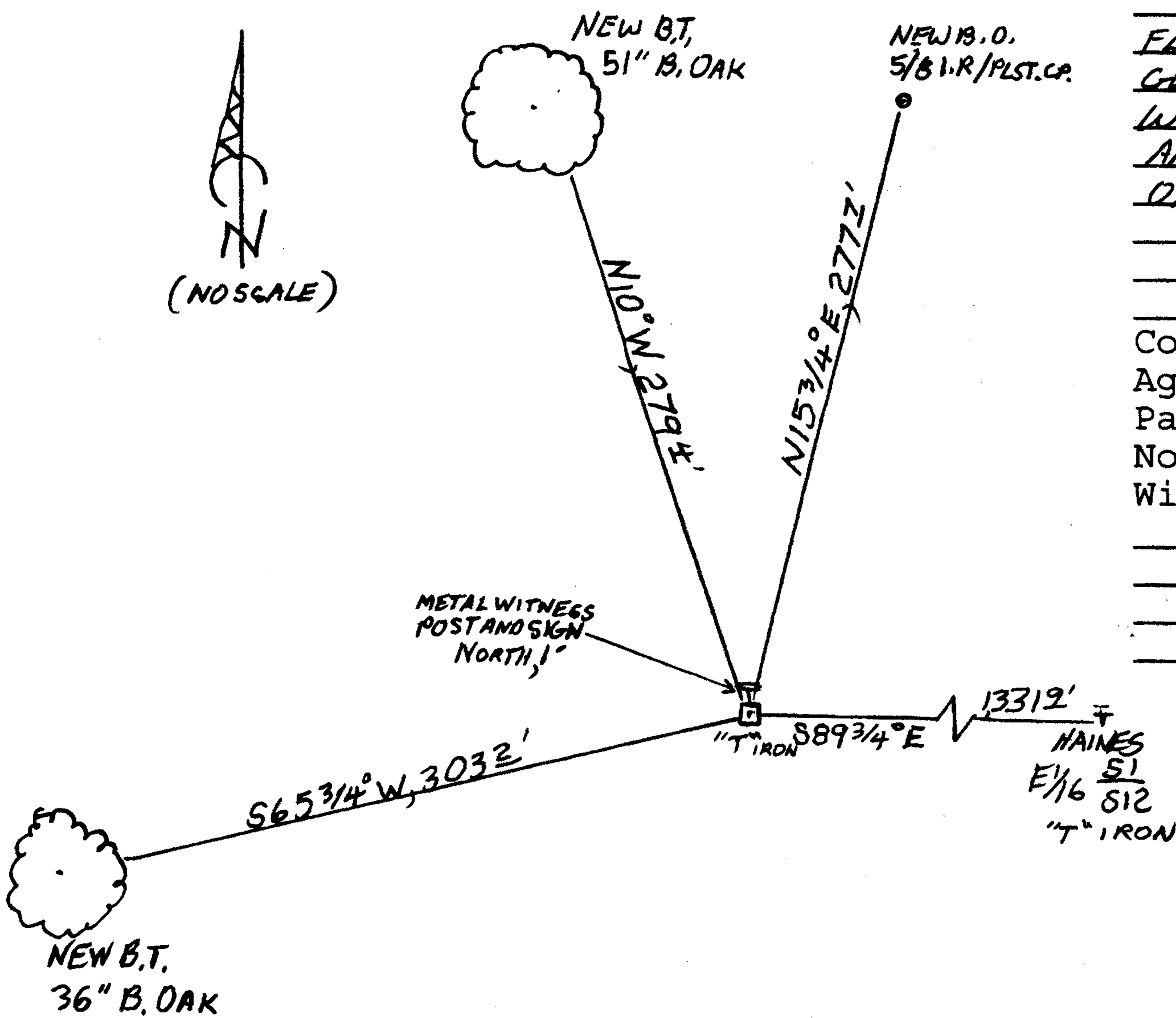
A 5/8 INCH IRON ROD WITH A YELLOW I.E. ENGINEERING PLASTIC CAP; BEARS N 15 3/4° E, 277 3/4 FEET DISTANT (PROBABLY FROM D.C.S.O. MAP FILE M 105-2 BUT DOES NOT AGREE WELL WITH COMPUTED TIE USING HAINES' AND I.E.'S MAPS.)

A 36 INCH DIAM. BLACK OAK (ONE-HALF OF WHICH DIED DECADES AGO AND IS NOW ROTTED TO GROUND AND GONE) IS SCRIBED "1/4 S1" "CSBT" ON A DOUBLE BLAZE (TO THE RIGHT OF THE ROTTED TREE CENTER). THE CENTER OF THE ROOT-CROWN OF THE LIVE 36 INCH B. OAK TRUNK BEARS S 65 3/4° W, 303 1/2 FEET DISTANT.

A 51 INCH BLACK OAK SCRIBED "1/4 S1 CS" "BT" ON A DOUBLE BLAZE; BEARS N 10° W, 279 1/2 FEET DISTANT.

Sketch of Monument, Accessories, and General Area

Location & Comments



MONUMENT IS IN NEARLY FLAT OPEN PASTURE SLOPING AWAY GENTLY WEST TO SCATTERED OAK WOODS. A METAL WITNESS POST AND SIGN ARE SET 1 FOOT NORTH OF MONUMENT.

Comp. Decline. 15 1/2° E
Agency D.C.S.O.
Party Chief STEPHEN JOHN FLAISE
Note keeper Stephen John Flaese
Witnesses MIKE S. KOCH

Surveyor's Seal

REGISTERED PROFESSIONAL LAND SURVEYOR

OREGON JULY 25, 1990 RANDALL W. SMITH 2400

Handwritten signature of Randall W. Smith

LOWMAN 6-30-2016