

GOVERNMENT CORNER RESTORATION FORM

FILED

TOWNSHIP 24S RANGE 06W SEC. 18 PLSS # 100440

Date: 7/22/2014 By: JC
This survey consists of:

DOUGLAS COUNTY OREGON

DATE JUNE 29, 2014

Map: _____
Narrative: _____
Corner Rpt: CS 67/41-27

Corner Designation

DOUGLAS COUNTY
SURVEYOR

$\frac{1}{4}$
513 + 518

Previous Renewals PROPORTIONED IN: 1966
Monument(s) Found: (Condition and Source)

- Condition Report
- Not Found
- Renewed
- Unrecorded
- Surveyed In
- Referenced Out

FROM THE 1966 SURVEY A 5/8 INCH DIAMETER X 30 INCH LONG IRON ROD THE TOP OF WHICH IS BENT WEST 1 1/2 INCHES AND IS BURIED 4 INCHES BELOW GROUND SURFACE.

MONUMENT DETAIL

A 1/2 INCH DIAM. IRON PIPE NOTED AS THE CORNER MONUMENT IN THE D.C.S.O. FILED MAP M168-11 IS SET PROTRUDING 2 INCHES ABOVE GROUND. THE TOP OF THIS LEANING IRON PIPE IS N72°W, 06 FEET DISTANT FROM THE PLUMB POSITION OF THE ABOVE FOUND 5/8 INCH IRON ROD. THE BASE OF THIS FOUND IRON PIPE IS 2 INCHES WEST OF THE PLUMB IRON ROD POSITION.

ACCESSORIES FOUND AND NEW ARE MEASURED FROM THE PLUMB BASE OF THE FOUND 5/8 INCH IRON ROD

Accessories Found

A WIDE SEARCH FOR THE ORIGINAL B.T.S WAS MADE BUT NO EVIDENCE WAS FOUND.

FROM THE 1966 RENEWAL A 10" W. OAK NOW A 26 INCH DIAM. WHITE OAK WITH A FULLY HEALED DOUBLE BLAZE; BEARS N 03°14' W, 59 1/2 FEET DISTANT (RECORD N 3°15' W, 60° FT.).

C.S. File 67/41-27

RENEWAL

Monument Set (Procedure and Description)

MONUMENT DETAIL

N/A

THE PLUMB POSITION OF THE BASE OF THE FOUND 5/8 INCH IRON ROD IS REFERENCE OUT, THE ROD IS REMOVED, STRAIGHTENED AND THEN RETURNED TO THE REFERENCED POSITION. THE TOP OF THE NOW PLUMB IRON ROD IS APPROX. 2 INCHES LOWER THAN THE GROUND SURFACE.
(THE 1/2 INCH IRON PIPE IS LEFT AS FOUND).

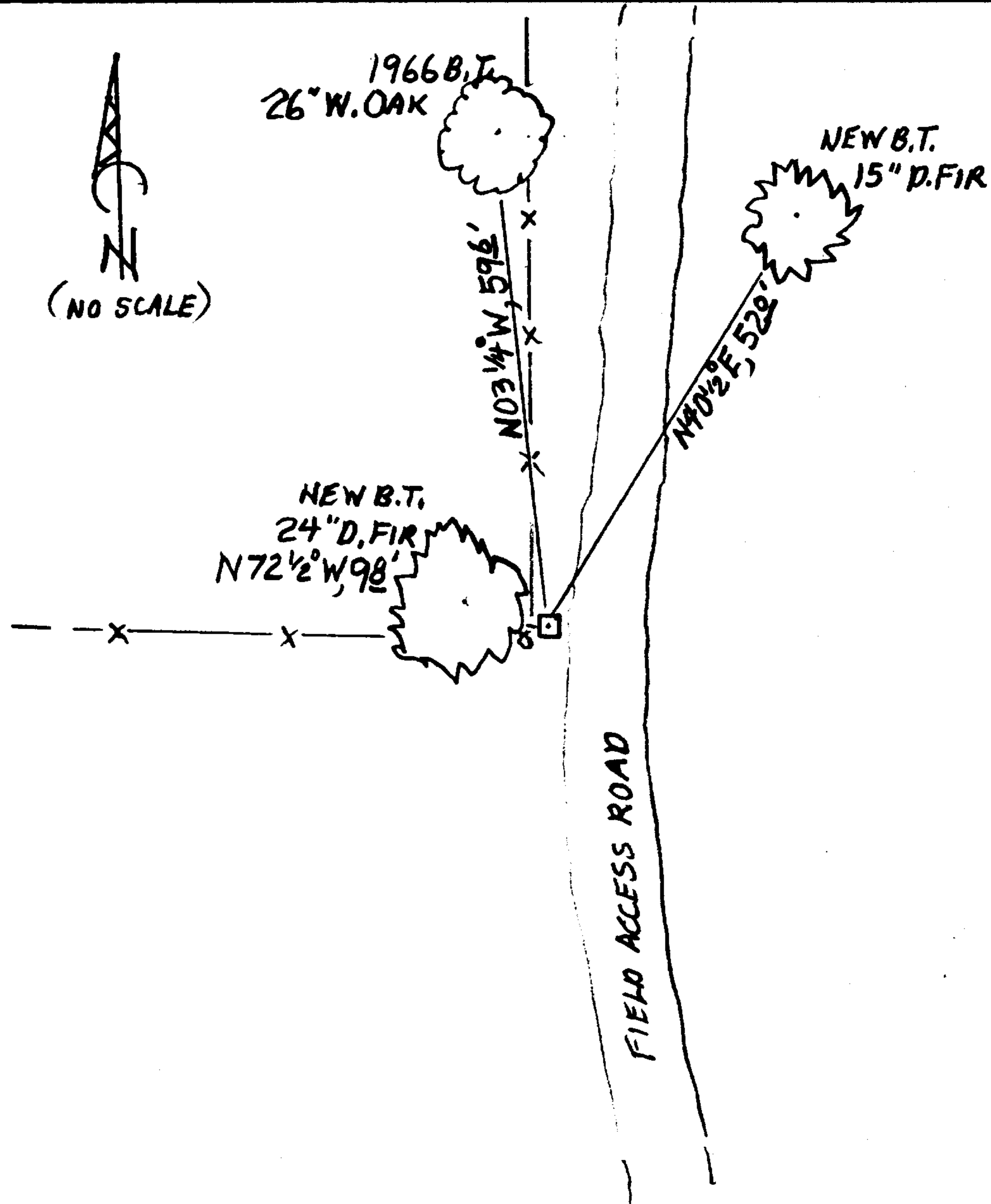
New Accessories

A 15 INCH DIAM. DOUGLAS FIR SCRIBED "1/4 S18" "CSBT" ON A DOUBLE BLAZE; BEARS N 40 1/2° E, 52.0 FEET DISTANT.

A 24 INCH DIAM. DOUGLAS FIR SCRIBED "1/4 S13CS" "BT" ON A DOUBLE BLAZE; BEARS N 72 1/2° W, 98 FEET DISTANT.

Sketch of Monument, Accessories, and General Area

Location & Comments



CORNER IS IN WEST EDGE OF N-S RUNNING FIELD ACCESS ROAD (DIRT) AND JUST EAST OF A FENCE CORNER, WITH FENCES RUNNING NORTH AND WEST.

CORNER IS TOWARD NORTH END OF AN OPEN FIELD SURROUNDED BY FIR, OAK AND MAPLE WOODS.

Comp. Decline. 15 1/2° E

Agency D.C.S.O.

Party Chief STEPHEN JOHN FLAISE

Note keeper Stephen John Flaiss

Witnesses MIKE S. KOCH

Surveyor's Seal

REGISTERED PROFESSIONAL LAND SURVEYOR

Randall W. Smith

OREGON JULY 25, 1990 RANDALL W. SMITH 2468

Rev. 6-30-2016