

GOVERNMENT CORNER RESTORATION FORM

TOWNSHIP 25.5 RANGE 06W SEC. 28 PLSS # 3002.00

DOUGLAS COUNTY OREGON

DATE JUNE 23, 2014

FILED

Date: 7/17/2014 By: JC

This survey consists of:

Map: _____

Narrative: _____

Corner Rpt: CS 67/41-25

Corner Designation

DOUGLAS COUNTY SURVEYOR

S29	S28
S32	S33

Previous Renewals 1936, 1963
Monument(s) Found: (Condition and Source)

- Condition Report
- Not Found
- Renewed
- Unrecorded
- Surveyed In
- Referenced Out

FROM THE 1936 RENEWAL A 3/4 INCH DIAMETER IRON BOLT WITH A 1 INCH SQUARE TOP IS SET PLUMB AND PROTRUDING 2 INCHES ABOVE GROUND.

FROM THE 1963 RENEWAL A 2 1/2 INCH DIAM. BRASS CAP (MARKED AS AT RIGHT) ON A 1 1/4 INCH I. D. IRON PIPE LEANING SLIGHTLY SE'LY PROTRUDING 10 INCHES ABOVE GROUND ON THE NW'LY EDGE OF THE 1936 MONUMENT.

MONUMENT DETAIL

COUNTY SURVEYORS OFFICE
T255 R6W

S29	S28
S32	S33

1963

Accessories Found

NO EVIDENCE REMAINS OF THE ORIGINAL BEARING TREES.

EVIDENCE OF THE FOUR 1936 RENEWAL TREES:

- A W. OAK 12" DIA. NOW A DOUBLE TRUNK WHITE OAK WITH A LARGE TRACTOR SCAR (COVERING THE BLAZE SCAR?) ON THE 30 INCH DIAM. MOST WESTERLY TRUNK. THE C.R.C. OF THE DOUBLE TRUNK BEARS N75°E 34 1/2 FEET DISTANT (RECORD N75°E, 32 FT.)
- A W. OAK 8" DIA. NOW A 15 INCH DIAM. WHITE OAK WITH A FULLY HEALED DOUBLE BLAZE (HARDLY VISIBLE); BEARS S16°E, 11 1/2 FEET DISTANT (AS PER RECORD).
- A B. OAK 12" DIA. NOW A 28 INCH DIAM 2 FOOT TALL BLACK OAK STUMP (PARTLY IN GROUND, PARTLY KICKED OUT OF POSITION) WITH CLEAR EVIDENCE OF HEALED FACE INSIDE); BEARS S44°W, 10 1/2 FEET DISTANT (RECORD S44°W, 9 1/2 FT. MORE AT A FACE MEASUREMENT).
- A FIR 13" DIA. NOW A SHALLOW ROOT DEPRESSION; BEARS N30°W, 34 1/2 FEET DISTANT (AS PER RECORD).

NO EVIDENCE OF THE 1963 RENEWAL BEARING TREE REMAINS.

C.S. File 67/41-25

RENEWAL

Monument Set (Procedure and Description)

MONUMENT DETAIL

N/A

N/A

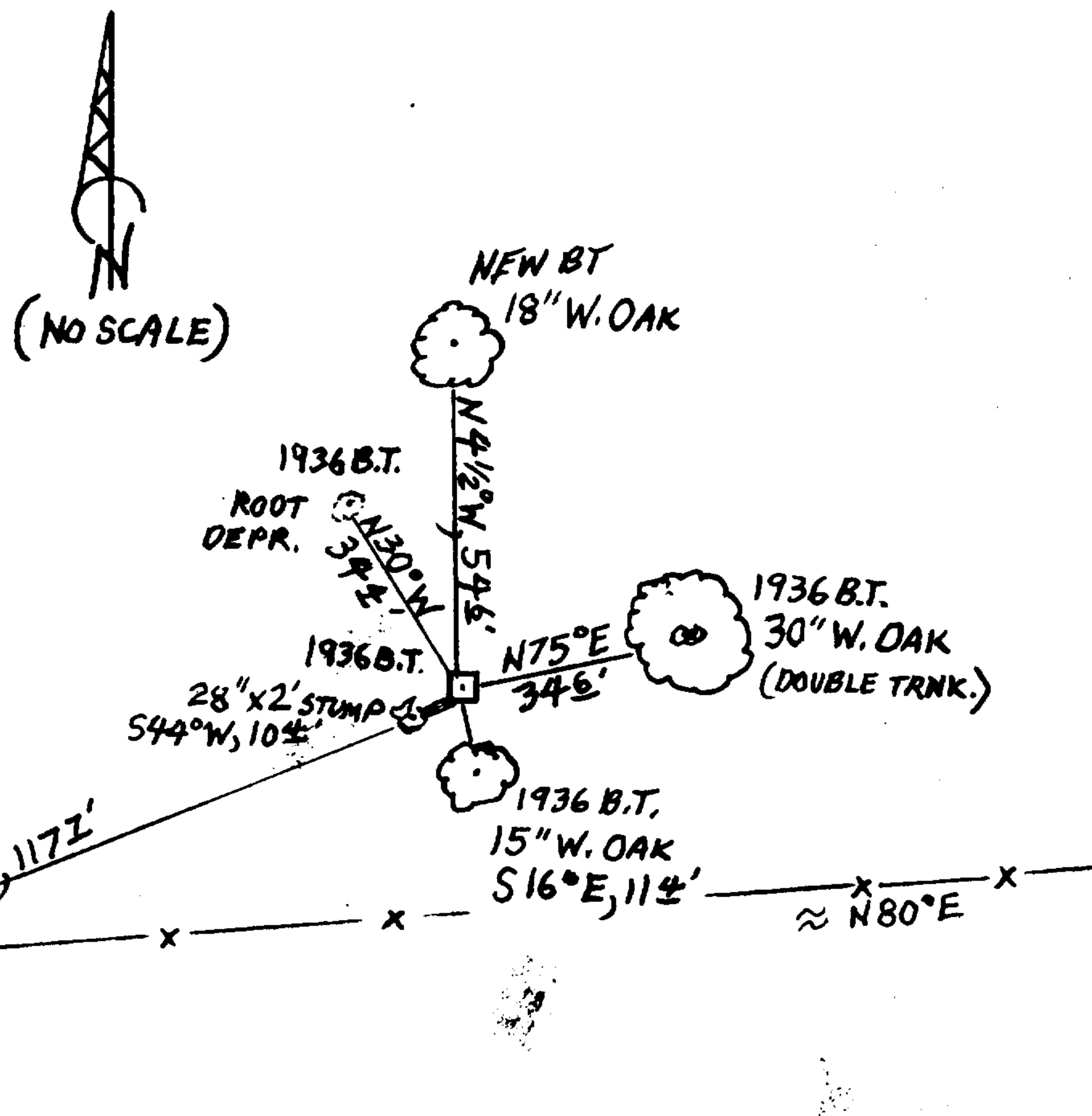
New Accessories

A 5/8 INCH IRON PROTRUDING APPROX. 8 INCHES ABOVE GROUND AND SET JUST EAST'LY OF A FENCE POST BEARS S56 3/4°W, 117 1/2 FEET DISTANT (THIS BEARING AND DISTANCE FROM THE CORNER AGREES WITH THE MAP RELATIONSHIP SHOWN IN THE D.C.S.O RECORDS ON MAP M 89-35).

AN 18 INCH DIAM. WHITE OAK DOUBLE BLAZED AND SCRIBED "T25 R6W S29 CS" "BT"; BEARS N41 1/2°W, 54 1/2 FEET DISTANT.

Sketch of Monument, Accessories, and General Area

Location & Comments



MONUMENT IS AT EASTERLY EDGE OF LARGE MOWN YARD IN A MIXED OAK AND FIR WOODS. A FENCE RUNNING APPROX. N80°E IS APPROX 50 FEET SOUTH OF CORNER.

Comp. Decline. 15 1/2°E
Agency D.C.S.O.
Party Chief STEPHEN JOHN FLAUSE
Note keeper Stephen John Flause
Witnesses MIKE S. KOCH

Surveyor's Seal

REGISTERED PROFESSIONAL LAND SURVEYOR

Randall W. Smith

OREGON
JULY 25, 1980
RANDALL W. SMITH
2488

RENEWAL 6-30-2016