

TOWNSHIP 32S RANGE 05W SEC. 11 PLSS # 540500

Date: 6-2-2014 By: JC  
This survey consists of:

DOUGLAS COUNTY OREGON

DATE MAY 6, 2014

Map: \_\_\_\_\_

Narrative: \_\_\_\_\_  
Corner Rpt: CS67/41-21

Corner Designation

DOUGLAS COUNTY  
SURVEYOR

$\frac{1}{4}$   $\frac{S11}{S14}$

Previous Renewals 1900, 1909, 1952, 1956, 1971, 1982, 2007  
Monument(s) Found: (Condition and Source)

- \_\_\_\_\_ Condition Report
- \_\_\_\_\_ Not Found
- Renewed
- \_\_\_\_\_ Unrecorded
- \_\_\_\_\_ Surveyed In
- \_\_\_\_\_ Referenced Out

MONUMENT DETAIL

FROM THE 2007 BLM DEPENDENT RESURVEY  
A 3 1/4 INCH DIAMETER BRASS CAP (MARKED AS AT  
RIGHT) IS SET FLUSH WITH GROUND AT END OF  
DRIVE-WAY IN FIRM GRAVEL SOIL. WE DO NOT  
DISTURB MONUMENT TO LOOK FOR ANY EARLIER  
MONS.

DEPARTMENT OF THE INTERIOR  
T32S R5W

$\frac{1}{4}$   $\frac{S11}{S14}$

2006

BUREAU OF LAND MANAGEMENT

Accessories Found

EVIDENCE OF TWO ORIGINAL B.T.S  
A W. OAK 6" DIA. IS NOW A POSSIBLE SHALLOW ROOT-HOLE FOUND NEAR THE REC-  
ORD BEARING AND DISTANCE OF THE SW ORIG. B.T  
A B. OAK 10" DIA. IS NOW A LARGE DEEP AND DISTINCT ROOT-HOLE THE NEAR CENTER  
OF WHICH BEARS N81°W, 162 1/2 FEET DISTANT (AS PER RECORD).

EVIDENCE OF 1909 RENEWAL B.T.: A W. OAK ... 8" DIA. IS NOW A SEMI-CIRCLE OF  
YOUNG WHITE OAKS GROWING FROM THE EDGE OF A ROOT-HOLE THE CENTER OF WHICH  
BEARS S3 3/4°E, 223 1/2 FEET DISTANT (AS PER RECORD).

NO EVIDENCE REMAINS OF 1952. NORTHEAST PINE RENEWAL B.T.  
EVIDENCE OF 1956 RENEWAL BT A 36" PINE NOW A FALLEN OUT OF POSITION  
AND VERY ROTTED APPROX. 20 INCH DIAM. PINE THE ROOT-HOLE OF WHICH BEARS  
S83°E, 108 1/2 FEET DISTANT (AS PER RECORD).

FROM THE 1982 RENEWAL THE THREE NEW REFERENCES ARE FOUND.  
A 14" W. OAK NOW A DOUBLE TRUNK WHITE OAK THE 22 INCH DIAM. EASTERLY  
TRUNK OF WHICH HAS A FULLY HEALED DOUBLE BLAZE. THE DOUBLE TRUNK ROOT-  
CROWN BEARS S14 1/4°W, 163 1/2 FEET DISTANT (RECORD S14 1/4°W, 163 1/2 FT.). THESE  
OAKS MAY HAVE GROWN FROM EDGE OF O.B.T. ROOT-HOLE  
A 17" PINE NOW A 32 INCH DIAM. 2 1/2 FOOT TALL SAWN PINE STUMP WITH A  
FULLY HEALED DOUBLE BLAZE; BEARS S78 1/2°E, 48 1/2 FT DISTANT (DIST=D.C.SQ. BRG=BLM).  
A PP&L POWERPOLE #3859; BEARS N45 1/2°W, 42 1/2 FEET DISTANT (DIST=D.C.SQ. BRG=BLM)

N/A

N/A

New Accessories

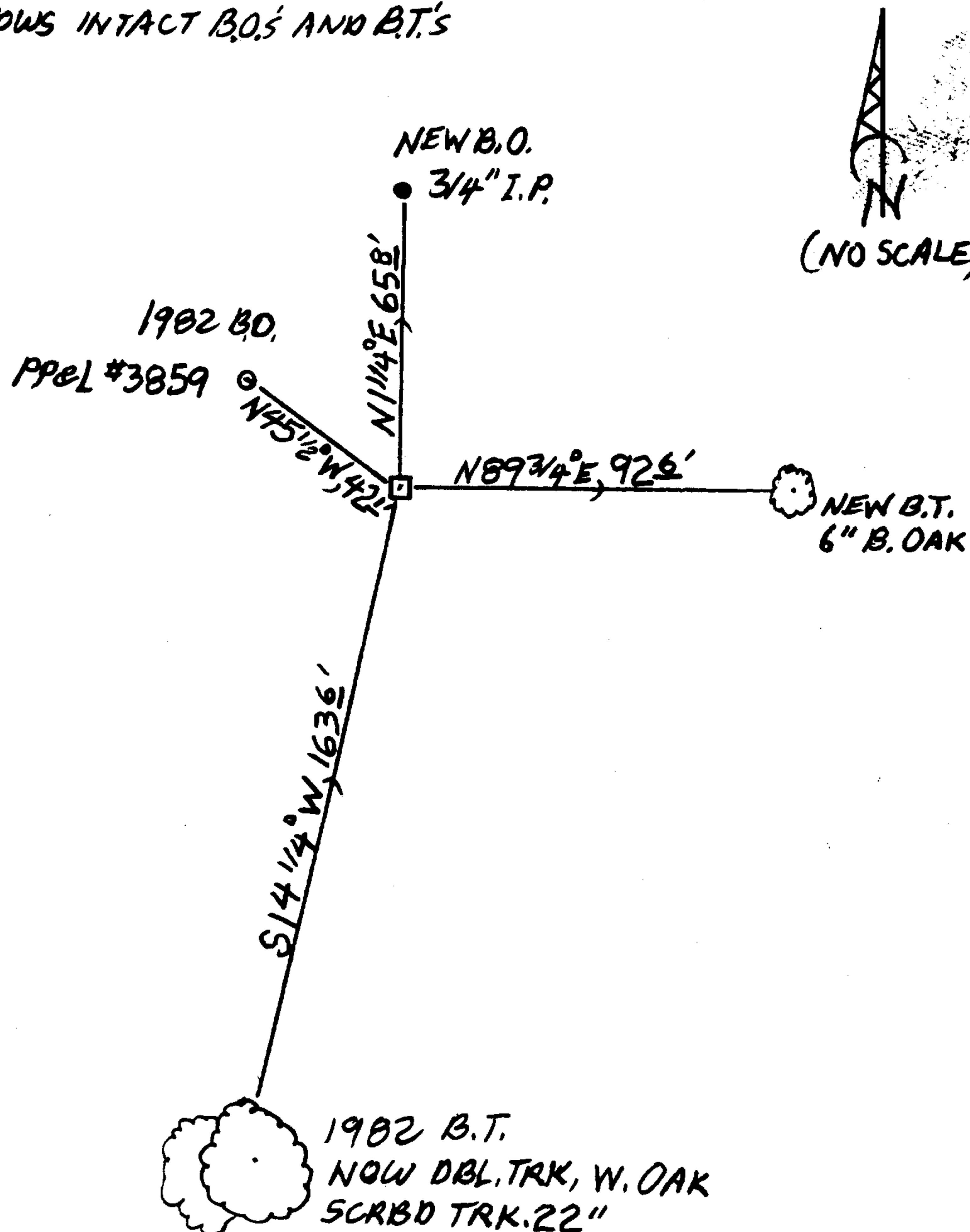
A NEW BEARING OBJECT A 3/4" DIAMETER IRON PIPE PROTRUDING 4 INCHES ABOVE GROUND; BEARS N1 1/4° E, 65 9 FEET DISTANT (RECORD NORTH, 66 0 FEET) THIS PIPE WAS SET BY WENDEROTH IN 1946 SEE COUNTY SURVEYORS OFFICE FILE CS 43/26.

A 6 INCH DIAM. BLACK OAK SCRIBED 1/4 SLICS "BT" ON A DOUBLE BLAZE BEARS N 89 3/4° E, 92 6 FEET DISTANT.

Sketch of Monument, Accessories, and General Area

Location & Comments

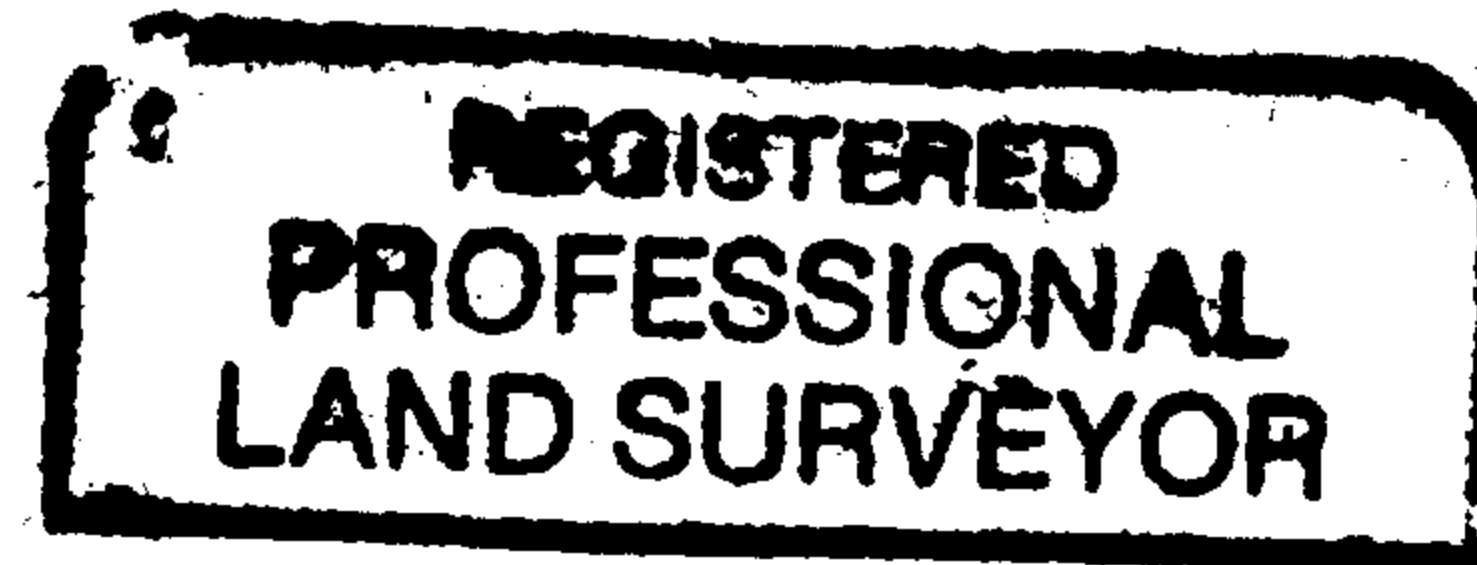
SKETCH SHOWS INTACT B.O.'S AND B.T.'S



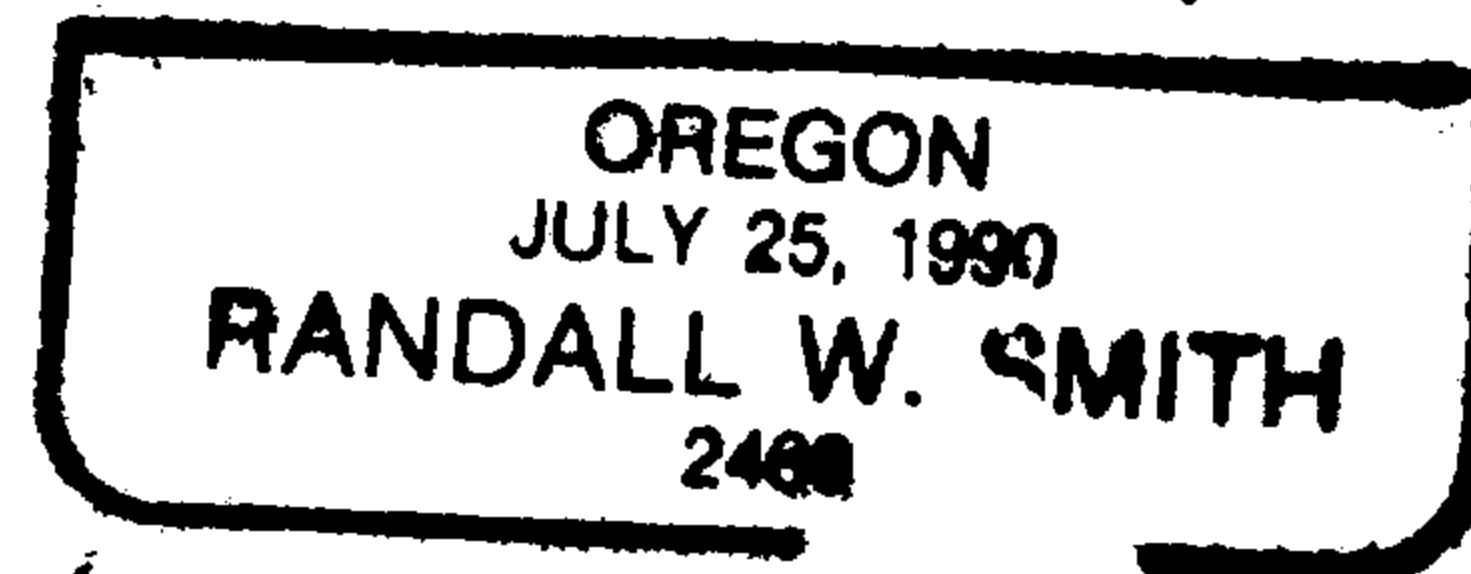
MONUMENT IS IN OPEN MOWED YARD JUST PAST END OF DRIVEWAY AT # 315 RD.

Comp. Decline. 15 1/2° E  
Agency D.C.S.O.  
Party Chief STEPHEN JOHN FLAUSE  
Note keeper Stephen John Flause  
Witnesses M.S. KOCH

Surveyor's Seal



*Randall W. Smith*



*Renewed 6-30-2014*