

GOVERNMENT CORNER RESTORATION FORM

FILED

TOWNSHIP 245 RANGE 05W SEC. 12 PLSS # 640540

Date: 5/7/2014 By: JC  
This survey consists of:

DOUGLAS COUNTY OREGON

DATE MAY 5, 2014

Map: \_\_\_\_\_

Narrative: \_\_\_\_\_

Corner Rpt: CS 67/41-19

Corner Designation

DOUGLAS COUNTY  
SURVEYOR

1  
- C 1/4 -  
1

Previous Renewals NEW  
Monument(s) Found: \_\_\_\_\_ (Condition and Source)

- \_\_\_ Condition Report
- \_\_\_ Not Found
- \_\_\_ Renewed
- \_\_\_ Unrecorded
- Surveyed In
- \_\_\_ Referenced Out

N/A

MONUMENT DETAIL

N/A

Accessories Found

N/A

C.S. File 67/41-19

RENEWAL

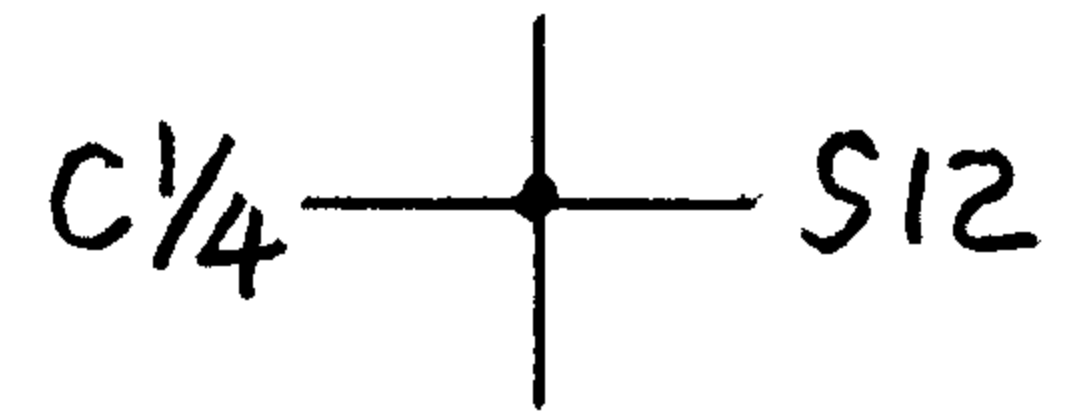
Monument Set (Procedure and Description)

A 2 3/8 INCH DIAMETER BRASS CAP (MARKED AS AT RIGHT) ON A 1 INCH I.D. X 30 INCH LONG IRON PIPE SET PLUMB AND PROTRUDING 8 INCHES ABOVE GROUND.

CORNER SET BY METEOR DESCRIBED IN TITLE 2009 MANUAL OF SURVEYING INSTRUCTIONS CHAPTER 3-114

MONUMENT DETAIL

DOUGLAS COUNTY SURVEYORS T24S R5W



2014

New Accessories

A 14 INCH DIAMETER DOUGLAS FIR SCRIBED "C 1/4 S 12" "CSBT" ON A DOUBLE BLAZE; BEARS S 15° E, 40 FEET DISTANT.

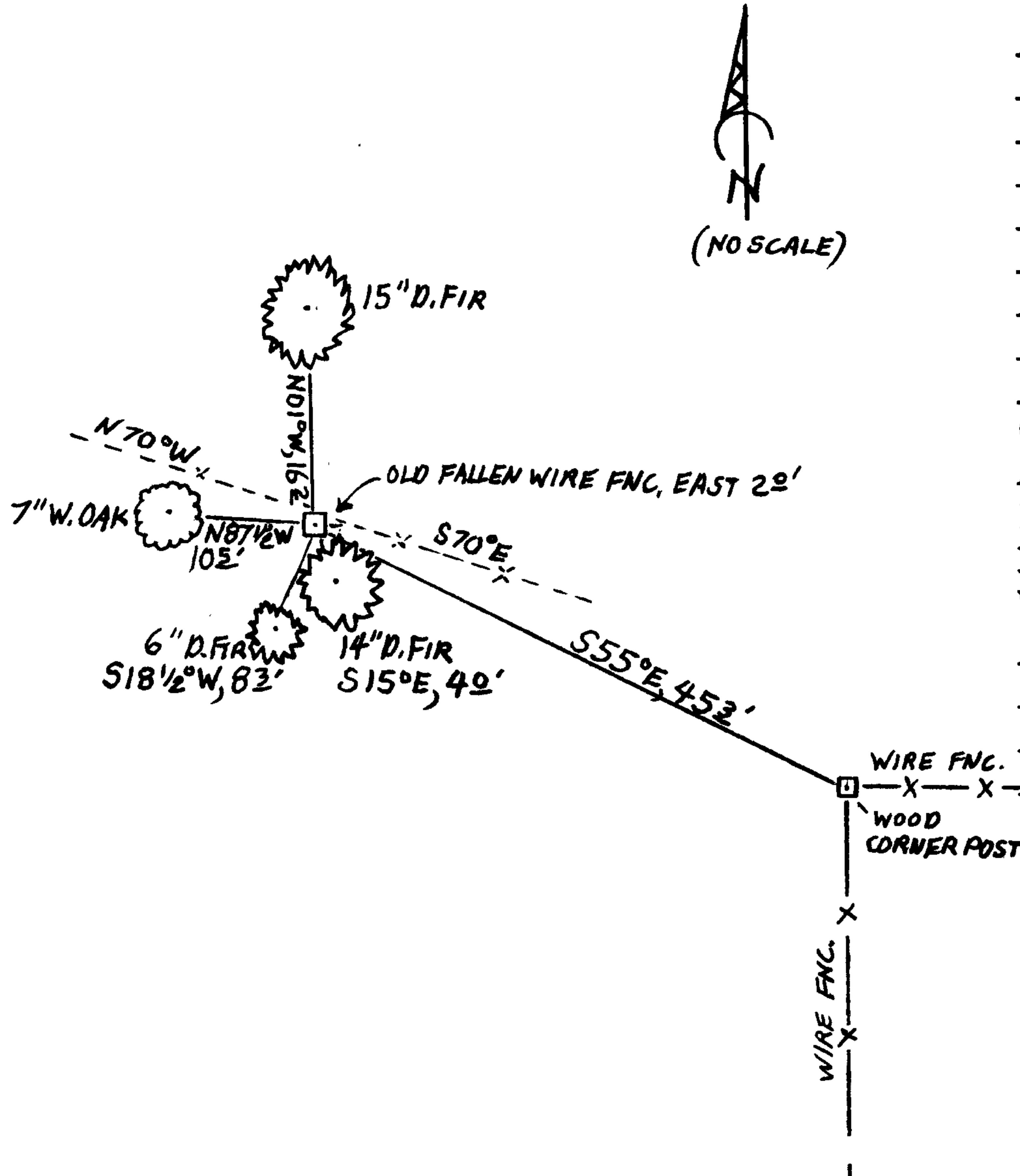
A 6 INCH DIAM. DOUGLAS FIR SCRIBED "X" "CSBT" ON A HIGH-LOW BLAZE; BEARS S 18 1/2° W, 83 FEET DISTANT.

A 7 INCH DIAM. WHITE OAK SCRIBED "C 1/4 S 12" "CSBT" ON A DOUBLE BLAZE; BEARS N 87 1/2° W, 102 FEET DISTANT.

A 15 INCH DIAM. DOUGLAS FIR SCRIBED "C 1/4 S 12 CS" "BT" ON A DOUBLE BLAZE; BEARS N 01° W, 162 FEET DISTANT.

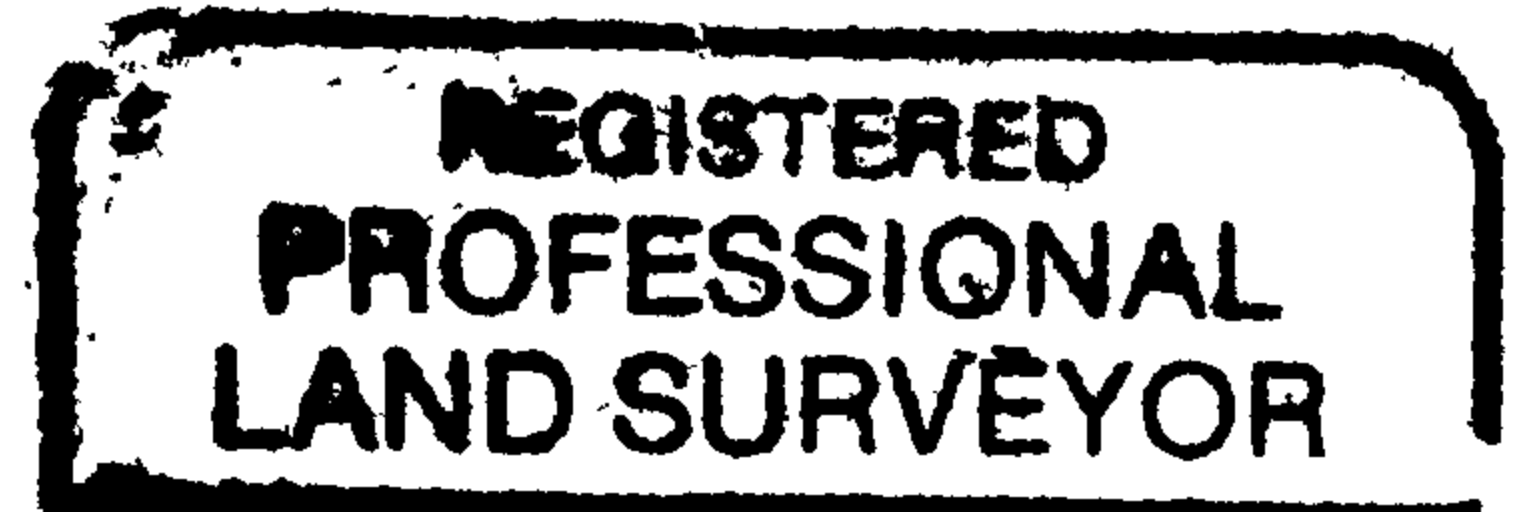
Sketch of Monument, Accessories, and General Area

Location & Comments

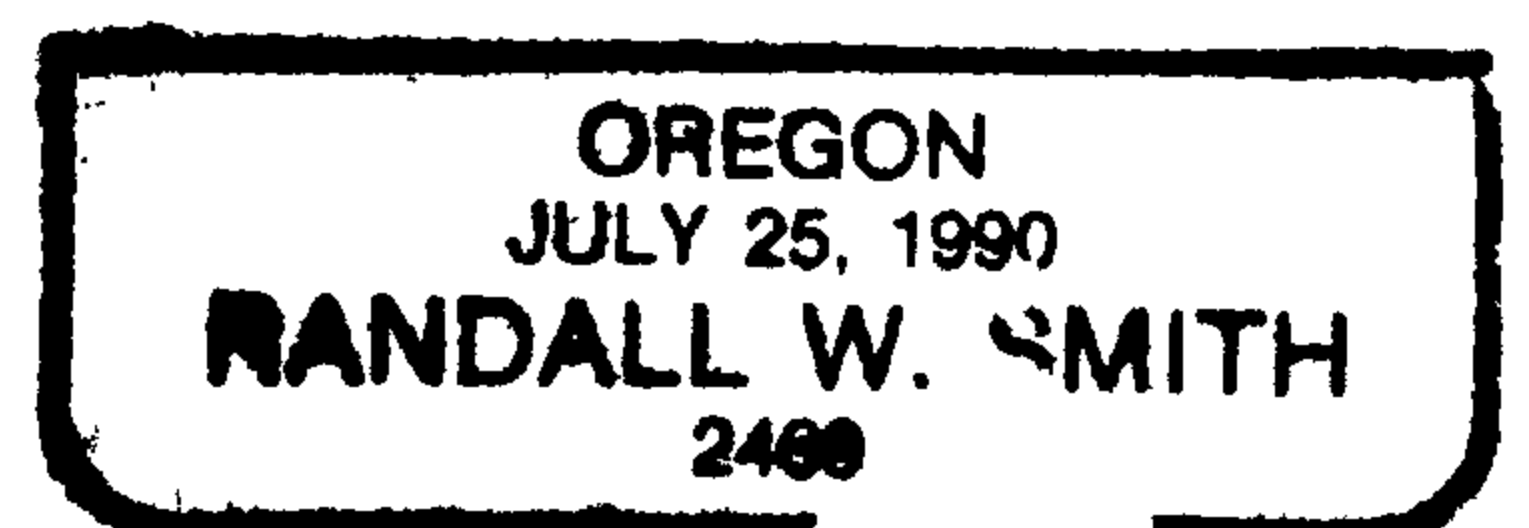


MONUMENT IS ON NORTH SLOPE OF A BROAD RIDGE IN AN OLD REPROD. FOREST OF FIR, OAK, MADRONE AND MAPLE. MONUMENT IS N 55° W, 45 3/4 FEET FROM A FENCE CORNER POST FROM WHICH FENCES RUN SOUTH AND EAST. MONUMENT IS 2 FEET WEST FROM AN OLD FALLEN WIRE FENCE RUNNING S 70° E AND N 70° W. Comp. Decline. 15 1/2° E Agency D.C.S.O. Party Chief STEPHEN JOHN FLAUSE Note keeper Stephen John Flauser Witnesses MIKE S. KOCH

Surveyor's Seal



Handwritten signature of Randall W. Smith.



RENEWAL 6-30-2014