

GOVERNMENT CORNER RESTORATION FORM

FILED

TOWNSHIP 24S RANGE 04W SEC. 16 PLSS # 340440

Date: 1-28-2014 By: J

DOUGLAS COUNTY OREGON

DATE JAN. 21, 2014

This survey consists of:

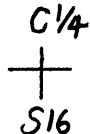
Map: _____

Narrative: _____

Corner Rpt: CS 67/41-13

Corner Designation

DOUGLAS COUNTY SURVEYOR



Previous Renewals 1998
Monument(s) Found: _____ (Condition and Source)

- Condition Report
- Not Found
- Renewed
- Unrecorded
- Surveyed In
- Referenced Out

THE 1980 BENTZ CENTER 1/4 SECTION 16
MONUMENT:
A 5/8" IRON ROD IN A 24" FIR STUMP IS NOW A
5/8 INCH DIAM. IRON ROD PROTRUDING 18 INCHES
FROM A MOSTLY ROTTED AWAY 24 INCH DIAM. DOUG-
LAS FIR STUMP.

N/A

MONUMENT DETAIL

Accessories Found

EVIDENCE OF THE TWO ORIGINAL BEARING TREES.
A 6" MAPLE (IDENTIFIED AS A B. OAK IN 1998 RENEWAL) IS NOW A 9 INCH DIAM. BLACK OAK
WITH A PREVIOUSLY OPENED DOUBLE BLAZE WITH NO EVIDENCE OF FACE OR SCRIBING NOW
VISIBLE. THIS TREE BEARS N33°E, 30 1/2 FEET DISTANT (AS PER 1998 RENEWAL RECORD).
A 6" MAPLE NOW ROTTED AND MOSTLY BURNED AWAY ROOT-CROWN; BEARS N87°E,
28 1/2 FEET DISTANT (AS PER RECORD).

THE TWO 1998 RENEWAL BEARING TREES:
AN 8" MAPLE NOW A DEAD 8 INCH DIAM. MAPLE WITH A PARTIALLY HEALED BLAZE SHOWING
THE SCRIBING "C 1/4 13T"; BEARS S07°E, 26 1/2 FEET DISTANT (RECORD S02°E, 26 1/2 FT.).
AN 8" CEDAR NOW A 12 INCH DIAM. INCENSE CEDAR WITH A PARTIALLY HEALED SINGLE
BLAZE SHOWING GOOD BUT ILLEGIBLE SCRIBING; BEARS N46°W, 14 1/2 FEET DISTANT
(AS PER RECORD).

Monument Set (Procedure and Description)

MONUMENT DETAIL

THE FOUND (PLUMB) 5/8 INCH IRON ROD IS DRIVEN DOWN AND NOW PROTRUDES 8 INCHES ABOVE THE ROTTED FIR STUMP.

N/A

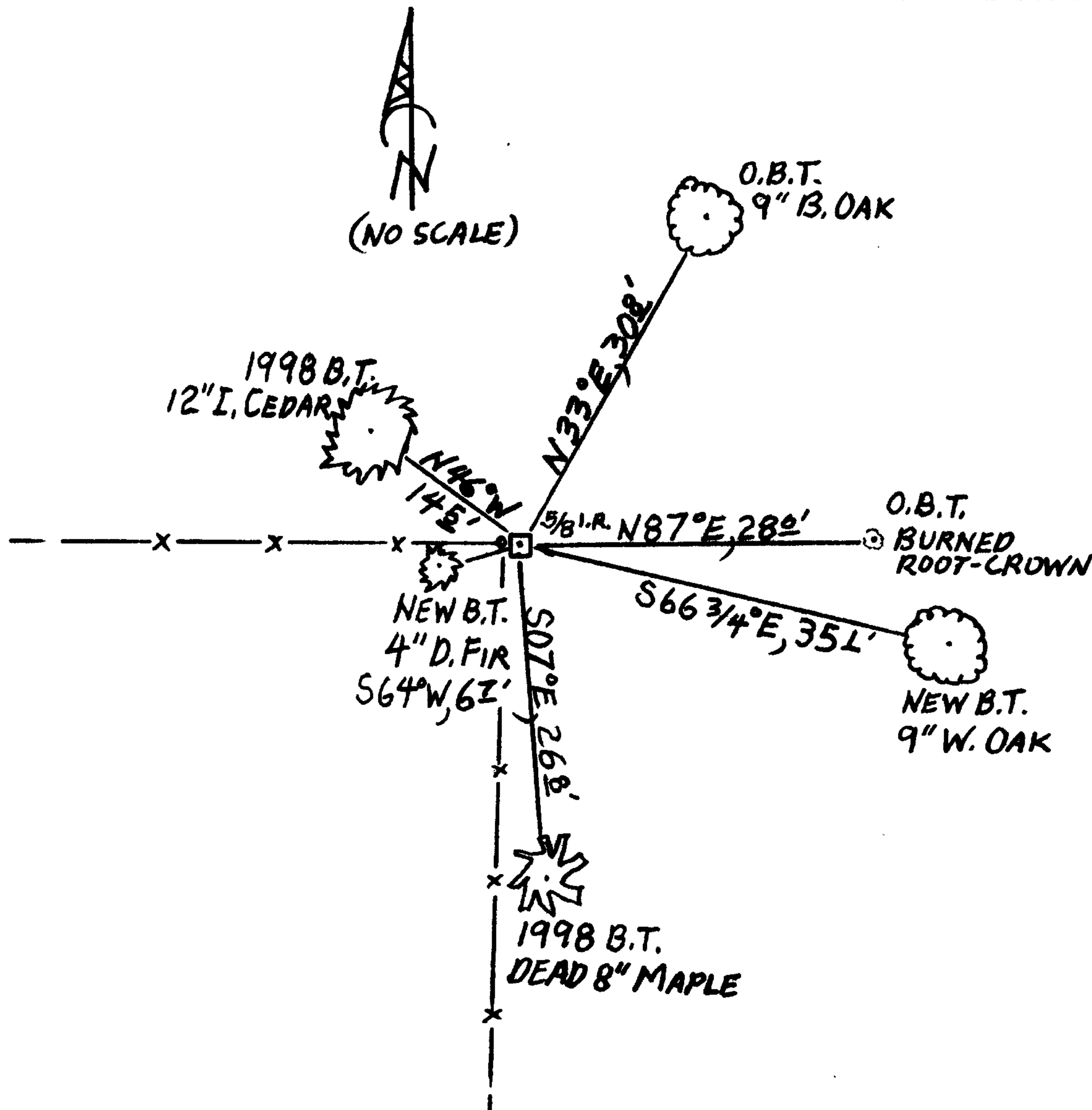
New Accessories

A 9 INCH DIAM. WHITE OAK SCRIBED "C 1/4 S 16 CS" "BT" ON A DOUBLE BLAZE; BEARS S 66 3/4° E, 35' FEET DISTANT.

A 4 INCH DIAM. DOUGLAS FIR SCRIBED "X" "BT" ON A HIGH-LOW BLAZE; BEARS S 64° W, 6' FEET DISTANT.

Sketch of Monument, Accessories, and General Area

Location & Comments



MONUMENT IS ON A MODERATELY STEEP SOUTHWEST SLOPE IN A FOREST OF YOUNGER OAK, CEDAR AND FIR. A FENCE CORNER WITH FENCES RUNNING SOUTH AND WEST IS SOUTH WEST 0' FEET.

Comp. Decline. 15 1/2° E
Agency D.C.S.O.
Party Chief STEPHEN (JOHN) FLAUSE
Note keeper Stephen John Flause
Witnesses MIKE S. KOCH

Surveyor's Seal

REGISTERED PROFESSIONAL LAND SURVEYOR

Handwritten signature of Randall W. Smith

OREGON
JULY 25, 1990
RANDALL W. SMITH
2488