

GOVERNMENT CORNER RESTORATION FORM

FILED

TOWNSHIP 24S RANGE 4W SEC. 28 PLSS # 045020

Date: 1-13-2014 By: J  
This survey consists of:

DOUGLAS COUNTY OREGON

DATE DEC 13, 2013

Map: \_\_\_\_\_

Corner Designation

Narrative: \_\_\_\_\_

Corner Rpt: cs 67/41-9

DOUGLAS COUNTY  
SURVEYOR

NW  
DLC 45

- \_\_\_ Condition Report
- \_\_\_ Not Found
- Renewed
- \_\_\_ Unrecorded
- \_\_\_ Surveyed In
- \_\_\_ Referenced Out

Previous Renewals 1963  
Monument(s) Found: \_\_\_\_\_ (Condition and Source)

MONUMENT DETAIL

FROM THE 1963 RENEWAL:  
A 2 1/2 INCH DIAMETER BRASS CAP (MARKED AS M1812)  
ON A 1 INCH I. D. IRON PIPE IS BENT AND TILTED 1 1/2 FEET  
NORTHERLY FROM PLUMB WITH ITS TOP BURIED APPROX.  
4 INCHES BELOW GROUND SURFACE.

COUNTY SURVEYORS OFFICE  
T. 24 S,  
N. W. COR.  
D.L.C. | 45  
R. 4 W.  
1963

Accessories Found (ACCESSORIES ARE MEASURED FROM PLUMB POSITION OF FOUND MON.)

NO EVIDENCE REMAINS OF O.B.T.S FOUND IN 1963 (PASTURELAND HAS BEEN SINCE CLEARED).

EVIDENCE OF THE TWO 1963 RENEWAL B.T.S:  
A 15" W. OAK, NOW AN 18 INCH DIAM. 3 FOOT TALL PARTLY ROTTED WHITE OAK STUMP WITH EVIDENCE  
OF A HEALED BLAZE IS LOOSE ON GROUND SURFACE AND OUT OF POSITION. NO EVIDENCE OF ROOT-  
HOLE IS FOUND AT RECORD BEARING AND DISTANCE.  
AN 8" W. OAK, NOW A 21 INCH DIAM. WHITE OAK WITH A BARELY VISIBLE FULLY HEALED DOUBLE BLAZE;  
BEARS N46°E, 33 1/2 FEET DISTANT (AS PER RECORD).

RENEWAL

Monument Set (Procedure and Description)

MONUMENT DETAIL

THE PLUMB POSITION OF THE FOUND B.C. MONUMENT IS REFERENCED OUT AND THE MONUMENT IS REMOVED; DUE TO ITS CONDITION THIS MONUMENT IS DISCARDED.

DOUGLAS COUNTY SURVEYOR  
T24S  
R4W

AT THE ABOVE NOTED REFERENCED POSITION IS SET A 2 3/8 INCH DIAM. BRASS CAP (MARKED AS AT RIGHT) ON A 1 INCH I.D., 32 INCH LONG IRON PIPE. THE MONUMENT NOW PROTRUDES 3 INCHES ABOVE GROUND.

NW  
DLC 45

2013

New Accessories

THREE NEW BEARING TREES:

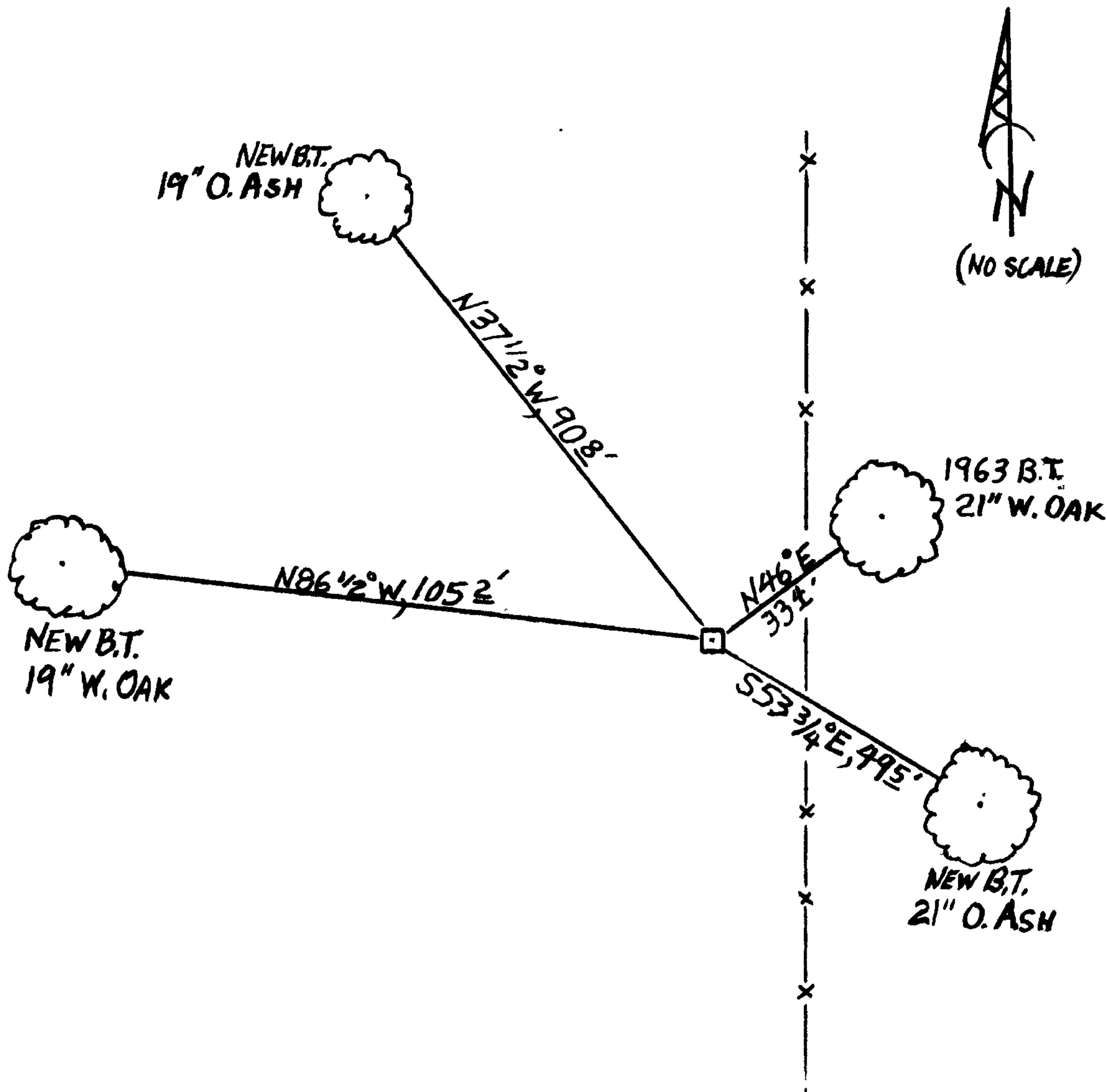
A 2 1/2 INCH DIAM. OREGON ASH, SCRIBED "NW DLC 45 CS" "BT" ON A DOUBLE BLAZE; BEARS S53 3/4° E, 495 FEET DISTANT.

A 19 INCH DIAM. WHITE OAK SCRIBED "NW DLC 45" "CS BT" ON A DOUBLE BLAZE; BEARS N86 1/2° W, 1052 FEET DISTANT.

A 19 INCH DIAM. OREGON ASH SCRIBED "NW DLC 45" "CS BT" ON A DOUBLE BLAZE; BEARS N37 1/2° W, 908 FEET DISTANT.

Sketch of Monument, Accessories, and General Area

Location & Comments



MONUMENT IS IN LOW FLAT DRAINAGE IN COW PASTURE WITH SCATTERED OAK AND ASH.

Comp. Decline. 15 1/2° E  
Agency D.C.S.O.  
Party Chief STEPHEN JOHN FLAUSE  
Note keeper Stephen John Flause  
Witnesses MIKE S. KOHN

Surveyor's Seal

REGISTERED  
PROFESSIONAL  
LAND SURVEYOR

*Randall W. Smith*

OREGON  
JULY 25, 1990  
RANDALL W. SMITH  
2489

RENEWAL 6-30-2014