

GOVERNMENT CORNER RESTORATION FORM

FILED

TOWNSHIP 24S RANGE 04W SEC. 28 PLSS # 340200

Date: 1-7-2014 By: JC

This survey consists of:

DOUGLAS COUNTY OREGON

DATE DEC. 18, 2013

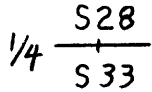
Map: _____

Narrative: _____

Corner Rpt: CS 67/41-8

Corner Designation

DOUGLAS COUNTY
SURVEYOR



- _____ Condition Report
- _____ Not Found
- Renewed
- _____ Unrecorded
- _____ Surveyed In
- _____ Referenced Out

Previous Renewals 1963, USED IN BLM SURVEYS 1979, 1983
Monument(s) Found: _____ (Condition and Source)

MONUMENT DETAIL

A 2 1/2 INCH BRASS CAP (MARKED AS AT RIGHT) ON A
1 INCH I.D. IRON PIPE IS PROTRUDING 14 INCHES ABOVE
THE GROUND AND IS BENT AND LEANING 1 FOOT NORTHERLY

COUNTY SURVEYORS OFFICE

T 24 S

S 28



S 33

R 4 W

1963

Accessories Found

(ACCESSORIES ARE MEASURED FROM PLUMB POSITION OF FOUND MON., SEE MONUMENT SET)
EVIDENCE OF THE ONE ORIGINAL BEARING TREE:
A W. OAK, 18" DIA. NOW A FALLEN AND OUT OF POSITION ROTTED 33 INCH DIAM. OAK WITH A POSSIBLE
PREVIOUSLY OPENED BLAZE (NO EVIDENCE OF FACE OR SCRIBING REMAINS). THE PRESUMABLE ROOT-HOLE
OF THIS FALLEN OAK BEARS S54°E, 440.3 FEET DISTANT (AS PER RECORD).

TWO 1963 RENEWAL BEARING TREES:
A 24" ASH, NOW A 33 INCH DIAM. OREGON ASH WITH A FULLY HEALED DOUBLE BLAZE; BEARS S62°E,
11 1/2 FEET DISTANT (AS PER RECORD).
A 9" W. OAK, NOW A 19 INCH DIAM. WHITE OAK WITH A FULLY HEALED DOUBLE BLAZE; BEARS N52°W,
220.5 FEET DISTANT (AS PER RECORD).

C.S. File 67/41-8

RENEWAL

Monument Set (Procedure and Description)

MONUMENT DETAIL

BC/IP MONUMENT IS UNCOVERED TO ITS BASE TO DETERMINE ORIGINAL PLUMB POSITION. PLUMB POSITION IS REFERENCED OUT AND MONUMENT IS REMOVED FROM GROUND. BC/IP MONUMENT IS STRAIGHTENED AND REPLACED IN GROUND AT THE REFERENCED OUT POSITION AND NOW IS SET FLUSH WITH SURFACE.

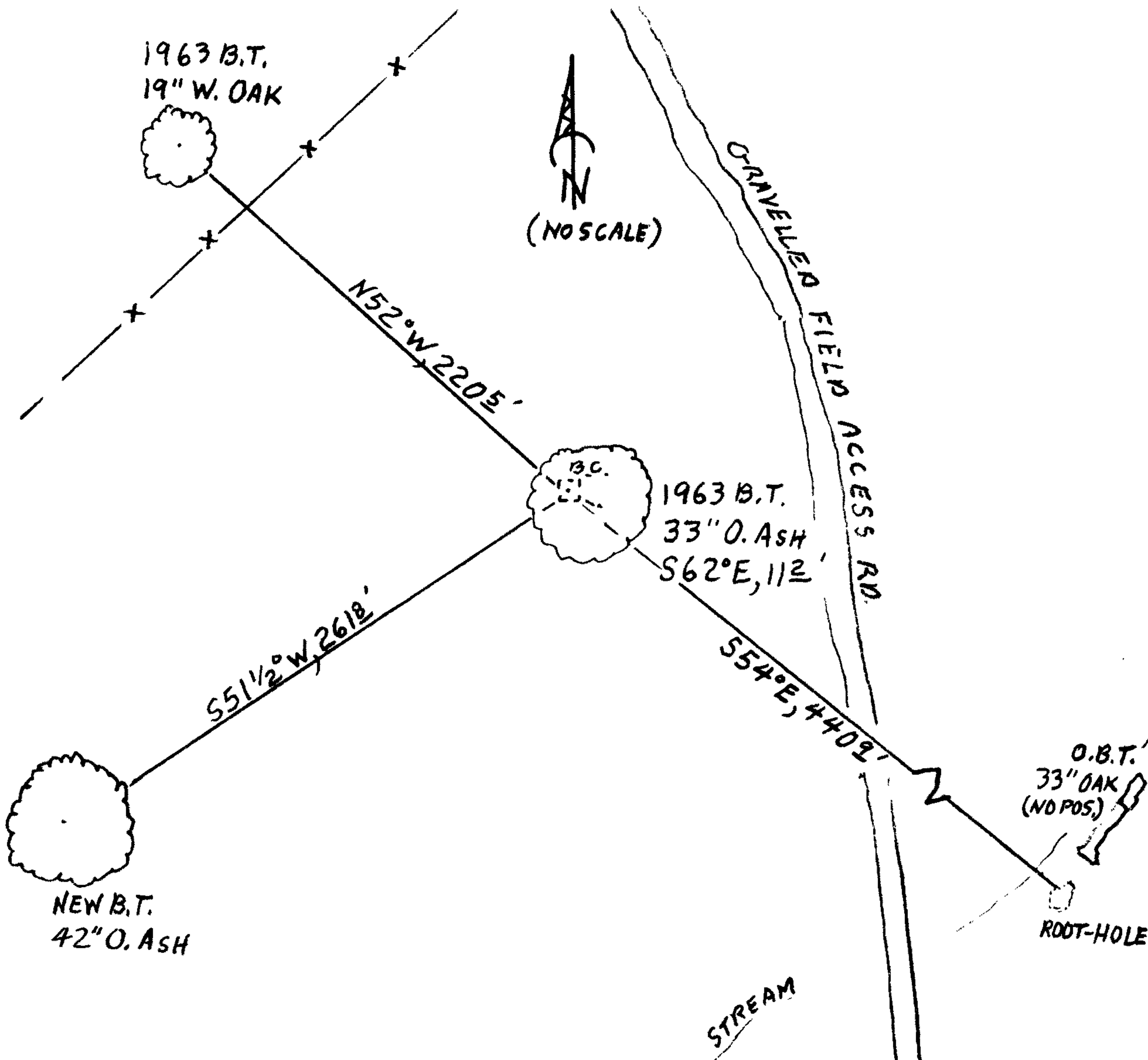
N/A

New Accessories

A 42 INCH DIAM. OREGON ASH SCRIBED "1/4 S33CS" "BT" ON A DOUBLE BLAZE; BEARS S51 1/2° W, 2618 FEET DISTANT.

Sketch of Monument, Accessories, and General Area

Location & Comments



MONUMENT IS IN FLAT PASTURE-LAND WITH SCATTERED ASH, OAK AND HAWTHORN.

Comp. Decline. 15 1/2° E
Agency P.C.S.O.
Party Chief STEPHEN JOHN FLAUSE
Note keeper Stephen John Flause
Witnesses MIKE S. KOCH

Surveyor's Seal

REGISTERED PROFESSIONAL LAND SURVEYOR

Handwritten signature of Randall W. Smith

OREGON
JULY 25, 1990
RANDALL W. SMITH
2400

Renewal 6-30-2014