

GOVERNMENT CORNER RESTORATION FORM

FILED

TOWNSHIP 24S RANGE 04W SEC. 33 PLSS # 045030

Date: 1-7-2014 By: JC

This survey consists of:

DOUGLAS COUNTY OREGON

DATE DEC. 3, 2013

Map: _____

Narrative: _____

Corner Rpt: CS 67/41-2

Corner Designation

SW
DLC 45

DOUGLAS COUNTY
SURVEYOR

Previous Renewals 1963
Monument(s) Found: _____ (Condition and Source)

- _____ Condition Report
- _____ Not Found
- Renewed
- _____ Unrecorded
- _____ Surveyed In
- _____ Referenced Out

MONUMENT DETAIL

FROM THE 1963 RENEWAL:
A 2 1/2 INCH DIAMETER BRASS CAP (MARKED AS
AT RIGHT) ON A 1 INCH I.D. X 32 INCH IRON PIPE
THE MONUMENT IS BENT AND TIPPED 23 FEET
SOUTH FROM ITS PLUMB POSITION.

COUNTY SURVEYORS OFFICE

T. 24 S.



Accessories Found

(ACCESSORIES ARE MEASURED FROM FOUND MONUMENTS PLUMB POSITION)

EVIDENCE OF THE TWO O.B.T.S.
AN OAK, 24" DIA., NOW A LARGE DISTINCT ROOT-HOLE WITH SOME OAK FRAGMENTS; BEARS
S14°W, 203 3/4 FEET DISTANT (AS PER RECORD).
AN OAK, 15" DIA., NOW A 2 INCH DIAM. ROTTEN, FALLEN AND OUT OF POSITION OAK WITH A
PREVIOUSLY OPENED BLAZE (NO SCRIBING FOUND); THE DISTINCT ROOT-HOLE OF WHICH BEARS
N89 1/2°E, 295° FEET DISTANT (AS PER RECORD).

TWO 1963 RENEWAL BEARING TREES.
A 7" D. FIR, NOW A 30 INCH DIAM. DOUGLAS FIR WITH A FULLY HEALED DOUBLE BLAZE; BEARS
S3 1/2°W, 72 3/4 FEET DISTANT (RECORD S2°W, 73°').
A (?) D. FIR NOW A 47 INCH DIAM. DOUGLAS FIR WITH A FULLY HEALED DOUBLE BLAZE; BEARS
N39 1/2°E, 109° FEET DISTANT (RECORD N38°E, 109°').

RENEWAL

Monument Set (Procedure and Description)

MONUMENT DETAIL

DETERMINED PLUMB POSITION OF FOUND B.C. MONUMENT AGREES WELL WITH FOUND Q.B.T EVIDENCE AN REASONABLY WELL WITH FOUND RENEWAL B.T.'S THE PLUMB MONUMENT POSITION IS REFERENCED OUT AND THE B.C./I.P. IS REMOVED FROM GROUND. THE B.C./I.P. IS STRAIGHTENED AND IS RESET PLUMB AT THE REFERENCED OUT POSITION AND NOW PROTRUDES 1 INCH ABOVE GROUND.

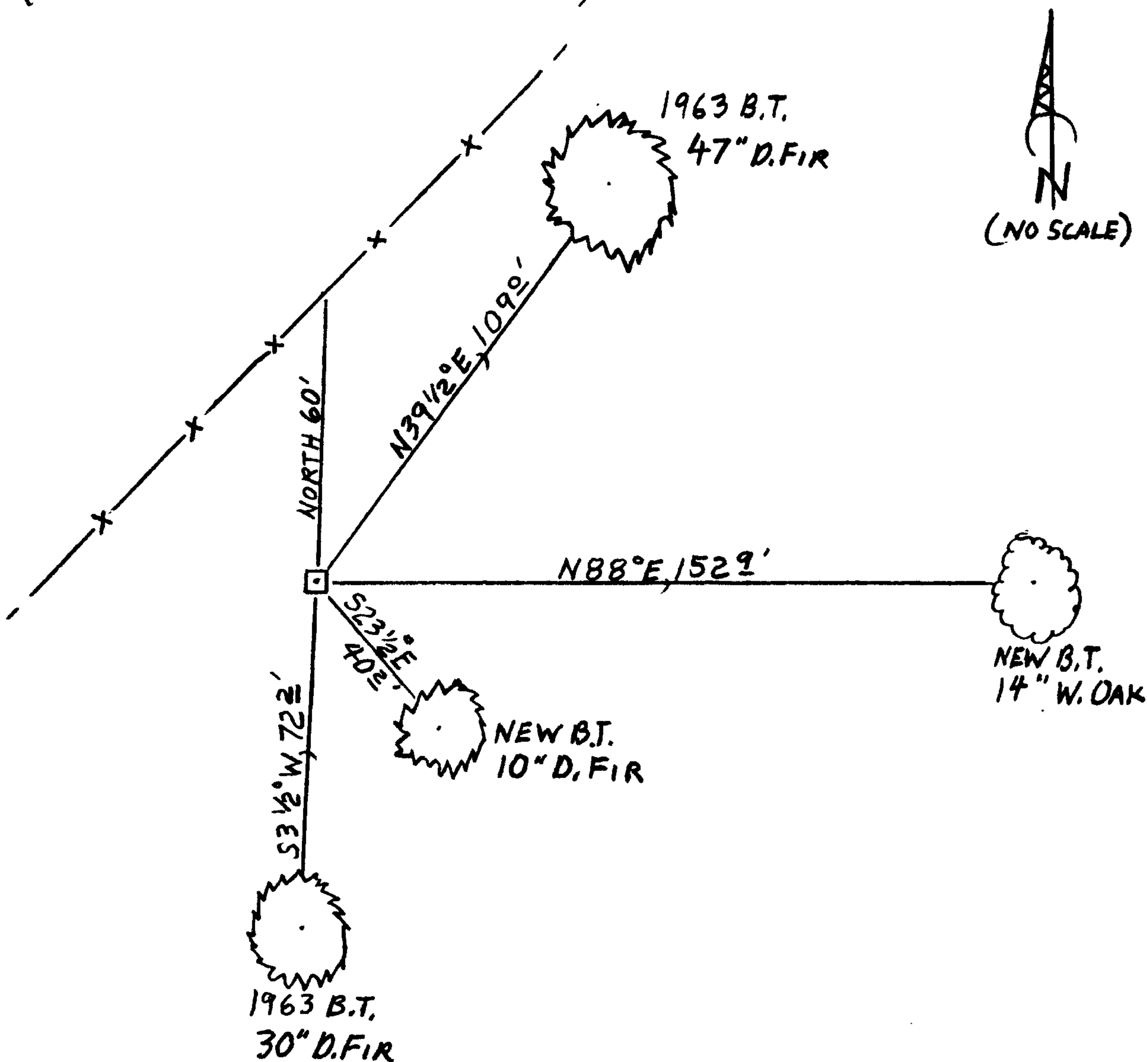
New Accessories

A 14 INCH DIAM. WHITE OAK SCRIBED "SW DLC 45 CS" "BT"; BEARS N88°E, 152' FEET DISTANT.

A 10 INCH DIAM. DOUGLAS FIR SCRIBED "SW DLC 45 CS" "BT"; BEARS S23 1/2°E, 40' FEET DISTANT.

Sketch of Monument, Accessories, and General Area (SKETCH DOES NOT SHOW Q.B.T, EVID.)

Location & Comments



MONUMENT IS NEAR EDGE OF SMALL FIELD ON A GENTLE NW SLOPE WITH FIR & OAK FOREST TO NORTH, SOUTH AND EAST WITH OPEN PASTURE TO THE NORTHWEST.

Comp. Decline. 15 1/2°E
Agency D.C.S.D.
Party Chief STEPHEN JOHN FLAUSE
Note keeper Stephen John Flause
Witnesses MIKE S. KOCH

Surveyor's Seal

REGISTERED PROFESSIONAL LAND SURVEYOR

Randall W. Smith

OREGON
JULY 25, 1990
RANDALL W. SMITH
2400

Renewal 6-30-2014