

GOVERNMENT CORNER RESTORATION FORM

FILED

TOWNSHIP 24S RANGE 04W SEC. 07 PLSS # 037040

Date: 1-7-2014 By: JC

This survey consists of:

DOUGLAS COUNTY OREGON

DATE Nov. 18, 2013

Map: \_\_\_\_\_

Narrative: \_\_\_\_\_

Corner Rpt: CS 67/41-1

Corner Designation

DOUGLAS COUNTY  
SURVEYOR

WNW  
DLC 37

Previous Renewals 1963  
Monument(s) Found: \_\_\_\_\_ (Condition and Source)

- \_\_\_\_\_ Condition Report
- \_\_\_\_\_ Not Found
- Renewed
- \_\_\_\_\_ Unrecorded
- \_\_\_\_\_ Surveyed In
- \_\_\_\_\_ Referenced Out

FROM THE 1963 RENEWAL A 2 1/2 INCH DIAMETER BRASS CAP (MARKED AS AT RIGHT) ON A 1 INCH I.D. X 32 INCH LONG IRON PIPE. THE MONUMENTS UPPER PORTION IS BENT SW'LY 1+ FEET AND BURIED 6 INCHES BELOW GROUND.

MONUMENT DETAIL

COUNTY SURVEYORS OFFICE

(STAMPING IS INCORRECT; IT SHOULD BE FOR THE WNW CORNER NOT THE NNW CORNER) →

NNW  
DLC |  
37

T24S R4W  
1963

Accessories Found

POSSIBLE EVIDENCE OF ONE ORIGINAL BEARING TREE. AN INDISTINCT AND SHALLOW ROOT-HOLE; BEARS S 89° E, 248.8 FEET DISTANT AS MEASURED ON THE SLOPE (AGREES WITH 1963 RECORD).

NO EVIDENCE REMAINS FROM OTHER O.B.T OR THE 1963 RENEWAL B.T.'S; THIS AREA WAS CLEARED FOR PASTURE AND A FIR PLANTATION SEVERAL YEARS AGO.

THE FOUND MONUMENT STILL HAS A GOOD PLUMB POSITION BELOW THE BENT PORTION; THIS POSITION IS REFERENCED OUT AND THE MONUMENT IS REMOVED FROM THE GROUND. THE MONUMENT IS MIS-MARKED AND IS TOO SEVERELY BENT TO REUSE, IT IS DISCARDED.

AT THE ABOVE DESCRIBED REFERENCED POSITION WE SET A NEW MONUMENT: A 2 3/8 INCH DIAM. BRASS CAP (MARK AS AT RIGHT) ON A 1 INCH I. D. X 32 INCH LONG IRON PIPE. MONUMEN IS SET APPROX 3 INCHES BELOW GROUND.

DOUGLAS COUNTY SURVEYOR  
T24 S R4W

WNW  
DLC 37

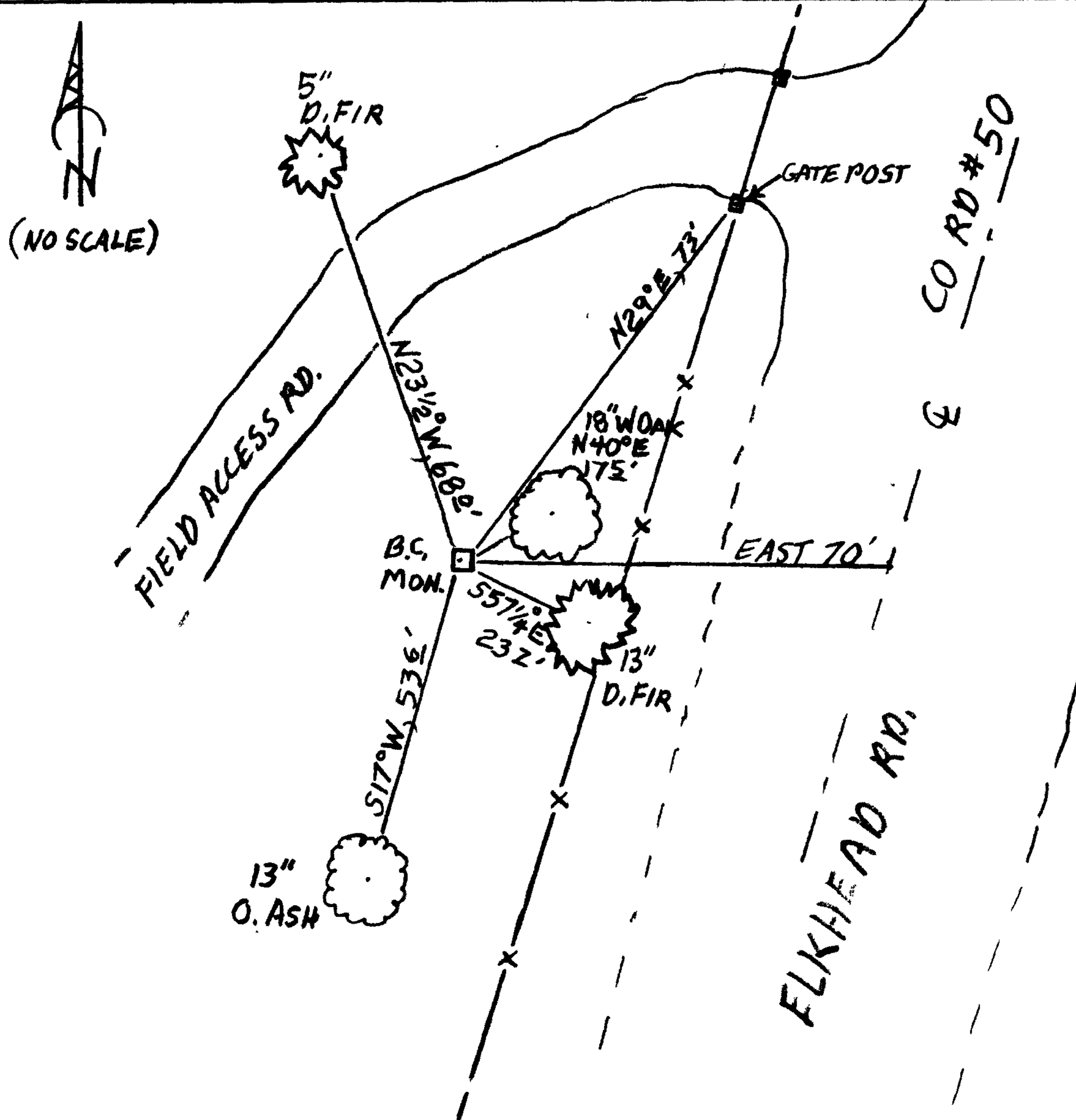
2013

New Accessories

- FOUR NEW BEARING TREES
- AN 18 INCH DIAM. WHITE OAK SCRIBED "WNW/DLC 37CS" "BT" ON A DOUBLE BLAZE; BEARS N40°E, 17 1/2 FEET DISTANT.
- A 13 INCH DIAM. DOUGLAS FIR SCRIBED "WNW/DLC 37CS" "BT" ON A DOUBLE BLAZE; BEARS S57 1/4°E, 23 1/2 FEET DISTANT.
- A 13 INCH DIAM. OREGON ASH SCRIBED "WNW/DLC 37CS" "BT" ON A DOUBLE BLAZE; BEARS S17°W, 53 1/2 FEET DISTANT.
- A 5 INCH DIAM. DOUGLAS FIR SCRIBED "X" "CSBT" ON A HIGH-LOW BLAZE; BEARS N23 1/2°W, 68° FEET DISTANT.

Sketch of Monument, Accessories, and General Area

Location & Comments



MONUMENT IS IN SMALL ROLLING PASTURE GROUND ON A SOUTH EAST SLOPE. PASTURE IS SURROUNDED BY MEDIUM AGE FIRS AND OAKS, AND YOUNG PLANTED FIRS.

Comp. Decline. 15 1/2°E  
 Agency D.C.S.O.  
 Party Chief STEPHEN JOHN FLAUSE  
 Note keeper Stephen John Flause  
 Witnesses MIKE S. KOCH

Surveyor's Seal

REGISTERED  
PROFESSIONAL  
LAND SURVEYOR

*Randall W. Smith*

OREGON  
JULY 25, 1990  
RANDALL W. SMITH  
2488

Renews 6-30-2014