

GOVERNMENT CORNER RESTORATION FORM

FILED

TOWNSHIP 30 S RANGE 06 W SEC. 13 PLSS # 052030

Date: 10/30/2013 By: JC
This survey consists of:

DOUGLAS COUNTY OREGON

DATE OCT. 08, 2013

Map: _____

Narrative: _____

Corner Designation

Corner Rpt: CS 67/40-15

SW
DLC 52

DOUGLAS COUNTY
SURVEYOR

Previous Renewals 1946 (SURVEY FOR MAP M12-76 CORRECTS RENEWAL)
Monument(s) Found: (Condition and Source) IN CORNER RECORDS

- Condition Report
- Not Found
- Renewed
- Unrecorded
- Surveyed In
- Referenced Out

FROM MAP IN DCSO RECORDS FILED AS M12-76
A 1" I.P. IS NOW A 1 INCH I.D. IRON PIPE FIRMLY
SET PROTRUDING 14 INCHES ABOVE GROUND.

N/A

MONUMENT DETAIL

Accessories Found

THE TWO BEARING TREES RECORDED IN 1946 WENDEROTH RENEWAL (CS. FILE 38/244).
A 30" B. OAK NOW A 32 INCH DIAMETER BLACK OAK WITH ALL OF CENTER AND WESTERLY
EDGE OF TREE ROTTEN AWAY (NO FACE OR SCRIBING REMAIN); BEARS N 64° 12' E, 34 3/4 FEET
DISTANT (RECORD FROM MAP M12-76 IS N 66° 14' E 34 3/4 FT.)
A 36" W. OAK NOW A 42 IN DIAMETER WITH A FULLY HEALED SINGLE BLAZE FACING SOUTHEAST
(BLAZE IS PARTIALLY OPENED BUT NO SCRIBING IS FOUND) AGREES WELL IN BEARING AND
DISTANCE TO B. OAK (ABOVE) AS RECORDED IN 1946 RECORD RENEWAL. SEE NEW ACCESS-
ORIES FOR THIS TREES RELATIONSHIP TO MONUMENT ABOVE.

FROM THE DCSO MAP M12-76 A 3/4" I ROD NOW A 3/4 INCH DIAM IRON ROD
FIRMLY SET PROTRUDING 3 INCHES ABOVE GROUND; BEARS N 0° 12' W, 151 1/2 FEET
DISTANT (MAP RECORD N 01° W, 151 1/2 FEET)

C.S. File 67/40-15

N/A

New Accessories

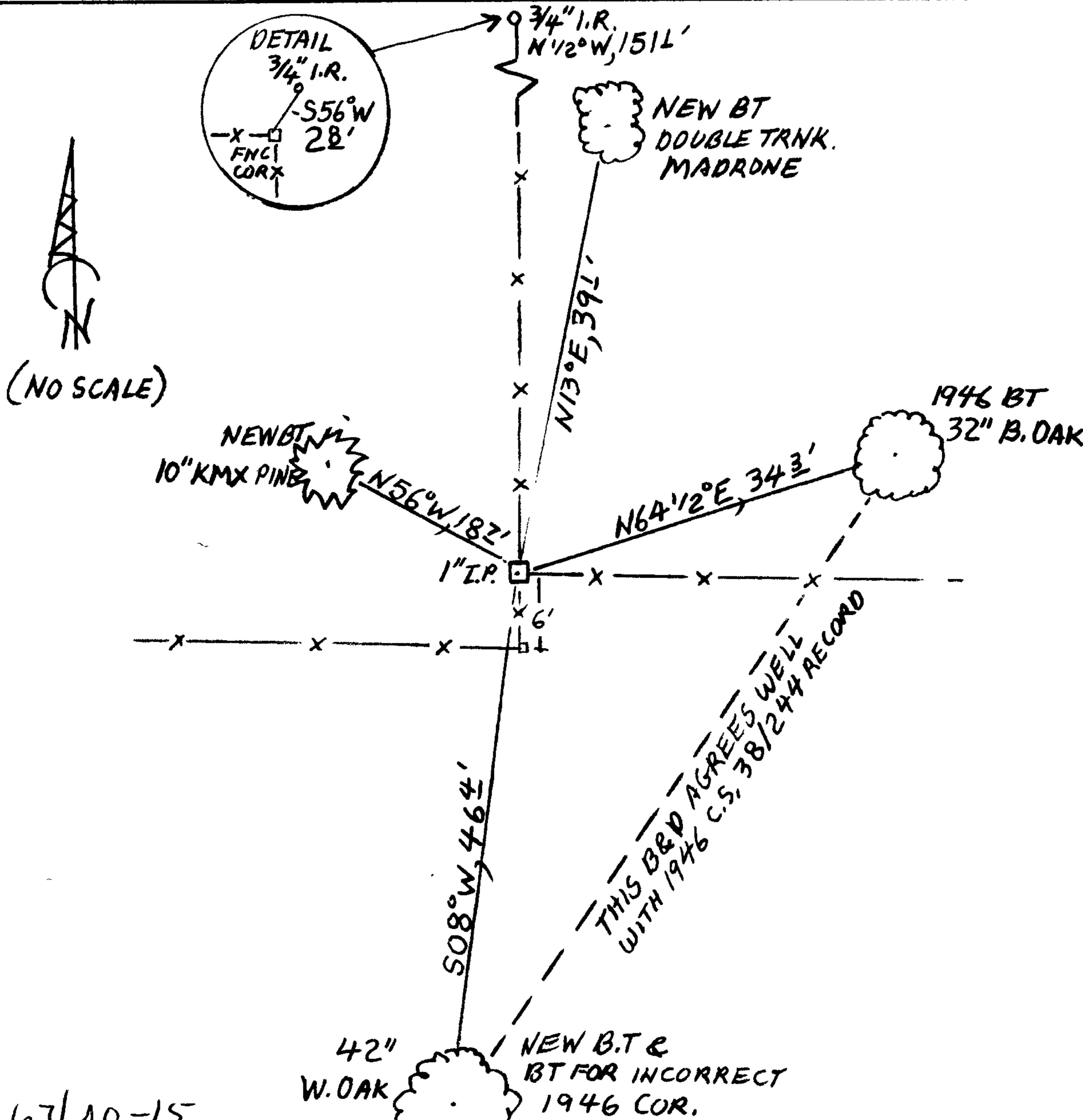
THE 42 INCH WHITE OAK NOTED IN FOUND ACCESORIES IS NOW SCRIBED "SW DLC 52 CS" "BT" ON A DOUBLE BLAZE (FACING I.P. MONUMENT) AND BEARS S 08° W, 46 1/2 FEET DISTANT.

A DOUBLE TRUNK MADRONE, THE MOST SOUTHERLY 9 INCH DIAM. TRUNK OF WHICH IS SCRIBED "SW DLC 52 CS" "BT" ON A DOUBLE BLAZE. THE CENTER OF THE ROOT CROWN OF THIS TREE BEARS N 13° E, 39 1/2 FEET DISTANT.

A 10 INCH DIAM. K.M.X. PINE SCRIBED "SW DLC 52 CS" "BT" ON A DOUBLE BLAZE; BEARS N 56° W, 18 1/2 FEET DISTANT.

Sketch of Monument, Accessories, and General Area

Location & Comments



MONUMENT IS ON WESTERLY SLOPE JUST OFF TOP OF HIGH RIDGE RUNNING SOUTH AND NORTHEASTERLY. MONUMENT IS IN OPEN OAK WOODLAND WITH A K.M.X PINE PLANTATION TO NW AND A PONDEROSA PINE PLANTATION TO NE.

Comp. Decline. 15 1/2° E
Agency DCSD
Party Chief STEPHEN JOHN FLAUSE
Note keeper Stephen John Flause
Witnesses MIKE S. KOCH

Surveyor's Seal

REGISTERED PROFESSIONAL LAND SURVEYOR

Randall W. Smith

OREGON
JULY 25, 1990
RANDALL W. SMITH
2400

RENEWAL 6-30-2014