

GOVERNMENT CORNER RESTORATION FORM

FILED

TOWNSHIP 28S RANGE 07W SEC. 29 PLSS # 240200

Date: 10/30/2013 By: SC
This survey consists of:

DOUGLAS COUNTY OREGON

DATE Oct 4, 2013

Map: _____

Corner Designation

Narrative: _____
Corner Rpt: CS 67/40-14

DOUGLAS COUNTY
SURVEYOR

$\frac{1}{4} \begin{array}{r} 529 \\ \hline 532 \end{array}$

Previous Renewals 1922, 1970, 1984, 2007
Monument(s) Found: _____ (Condition and Source)

- _____ Condition Report
- _____ Not Found
- Renewed
- _____ Unrecorded
- _____ Surveyed In
- _____ Referenced Out

MONUMENT DETAIL

THE 1922 CORNER MONUMENT WHICH IS A 1/2 INCH I.D. IRON PIPE IS SET JUST BELOW GROUND SURFACE AT SOUTH EDGE OF WHAT WOULD BE THE PLUMB POSITION OF THE 2007 BC/IP MONUMENT.

N/A

THE 2007 CORNER MONUMENT IS NOW A 1 INCH I.D. IRON PIPE MISSING ITS BRASS CAP AND LEANING 1 1/2 FEET SE'LY.

Accessories Found

ALL ACCESSORIES ARE FOUND AS DESCRIBED IN 2007 RENEWAL EXCEPT SW WHITE OAK STUMP WHICH IS NOW GONE. ASH AND WILLOW B.T.S STILL APPROX. THE RECORD DIAMETERS.

C.S. File 67/40-14

RENEWAL

Monument Set (Procedure and Description)

MONUMENT DETAIL

WE DIG DOWN NEXT TO FOUND 1/2 INCH IRON PIPE AND FIND THE PLUMB POSITION OF THE LEANING 2007 CORNER MONUMENT. THE PLUMB POSITION IS REFERENCED OUT AND THE FOUND MONUMENTS ARE REMOVED FROM THE GROUND. AT THE REFERENCED POSITION IS SET A 2 3/8 INCH DIAM. BRASS CAP (MARKED AS AT RIGHT) ON A 1 INCH I.D. IRON PIPE 30 INCHES LONG. THE BC/IP MONUMENT NOW PROTRUDES 4 INCHES ABOVE GROUND AND THE 1922 1/2 INCH X 21 INCH LONG IRON PIPE IS SET ON ITS SOUTH EDGE PROTRUDING 2 INCHES ABOVE GROUND

COUNTY SURVEYORS OFFICE
T28S R7W

1/4 S29
S32

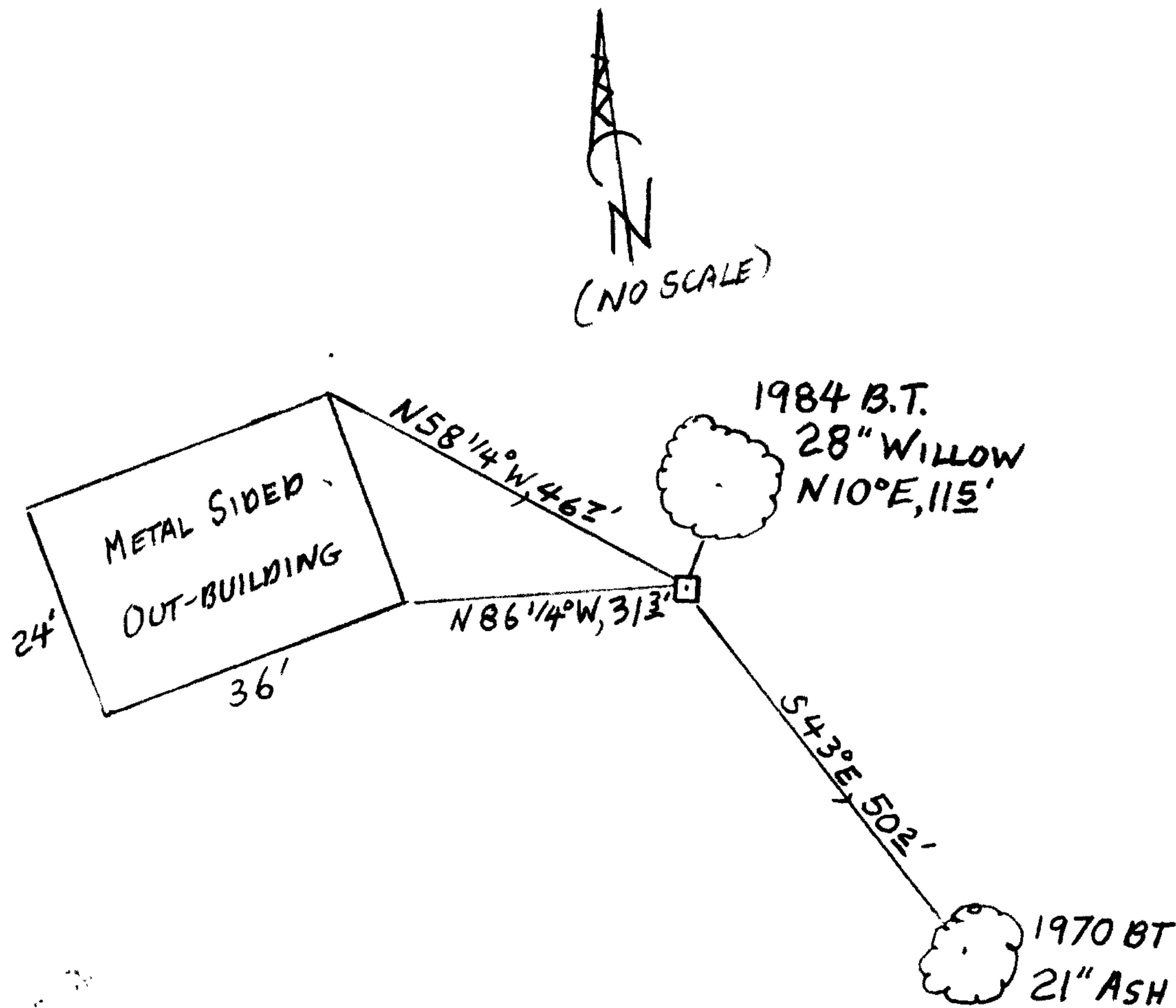
2013

New Accessories

THE MOST NORTHERLY CORNER OF THE 24' X 36' METAL SIDED OUT-BUILDING (DESCRIBED IN THE 2007 RENEWAL); BEARS N58 1/4° W, 46 2 FEET DISTANT. NO NEARBY TREES ARE SUITABLE FOR SCRIBING.

Sketch of Monument, Accessories, and General Area

Location & Comments



MONUMENT IS IN BACKYARD OF RESIDENCE AT STATE HIGHWAY 42

Comp. Decline. 15 1/2° E
Agency D.C.S.O.
Party Chief STEPHEN JOHN FLAUSE
Note keeper Stephen John Flause
Witnesses MIKE S. KOCH

Surveyor's Seal

REGISTERED PROFESSIONAL LAND SURVEYOR

Randall W. Smith

OREGON
JULY 25, 1990
RANDALL W. SMITH
2468

Renewal 6-30-2014